

# ZTE gigabit optical module





## Overview

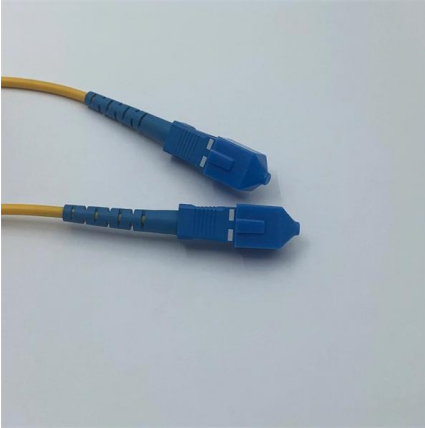
---

This ZTE SFP-GE-RJ45 compatible SFP module supports 1000Base-T connectivity up to 100m (328ft) over Cat5/Cat5e or above Ethernet cable via RJ45 connector. It is a copper transceiver compliant with the Gigabit Ethernet and 1000BASE-T standards as specified in IEEE 802. With a transmission range up to 40 kilometers, this transceiver is ideal for metro networks, data center interconnects, and. This technical white paper explores the ZTE GPON OLT Class C+ optical module, a critical component for high-density GPON boards (such as GTGH and GTGO). At the forefront of this evolution stands the ZTE ZXA10 C600 Optical Line Terminal (OLT), a large-capacity optical access platform designed to meet the most stringent requirements of next-generation networks.



## ZTE gigabit optical module

---



### ZTE GE 40km SFP Original New SFP Optical Transceiver

The ZTE GE 40km SFP Optical Transceiver is a high-performance, original ZTE SFP module designed for Gigabit Ethernet (GE) optical transmission over single-mode fiber (SMF).

[Contact Us](#)

### Gigabit Optical Module Zte Sfp Sm-10km-1310-1.25g-c

Company profile Report abuse Overview  
Essential details Manufacturer Part Number: ZTE SM-10km-1310-1.25G Type: SFP Place of Origin: Hunan, China

[Contact Us](#)



### ZTE SFP-GE-S40K Compatible 1000BASE-EX SFP Transceiver

Featuring a built-in Semtec chip and reliable DFB laser / PIN receiver, the SFP module delivers low power consumption and stable optical links for 1G single mode networks like Gigabit Ethernet and

[Contact Us](#)

### ZTE ZX10 C600 Optical Line Terminal

As a key component in GPON (Gigabit Passive Optical Network) and XGSPON (10-Gigabit Symmetrical PON) deployments, the C600 delivers high

[Contact Us](#)



### ZTE GPON OLT Class C+ Modules: Performance & Deployment Guide

In the evolving landscape of Fiber-to-the-Home (FTTH) architecture, maintaining signal integrity over long distances and high split ratios is the primary challenge for ISPs. This technical white paper

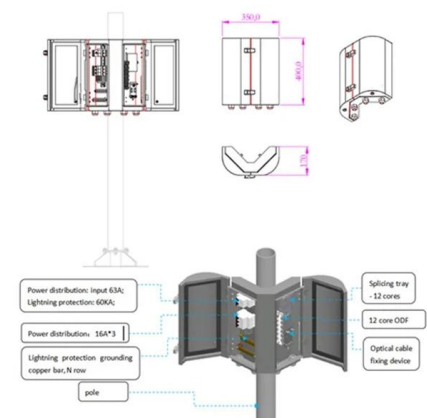
[Contact Us](#)



### I Want to Replace My ZTE F660 ONT With An SFP GPON ONT Module

The ZTE ZXHN F660 is a fiber optic terminal (ONT) used for fiber-to-the-home (FTTH) services. The TE ZXHN F660 ONT supports GPON (Gigabit Passive Optical Network) technology.

[Contact Us](#)



### Double Fiber 40 km SFP+ Optical Transceiver: ZTE

ZTE SFP-10GE-S40K is SFP+ Double Fiber Transceiver supporting 1.25-10.31 Gbps data rate in 40 km distance over Single-Mode Fiber (SMF).

[Contact Us](#)



### Advance 50G PON and Develop a 10-Gigabit All-Optical Network

In optical modules, ZTE has focused on meeting the key requirements for 50G PON OLT optical modules--specifically the SFP-DD GPON, XG (S)-PON, and 50G PON tri-generational

[Contact Us](#)



### ZTE unveils symmetric 8-port 50G PON

Based on ZTE's new-generation Tbit all-optical access platform ZXA10 C600E, the 8-port symmetric 50G PON& 10G PON& GPON Combo

[Contact Us](#)

### Gigabit optical module ZTE SFP SM-10km-1310-1.25G-C ZTE SM

Other attributes Place of Origin Hunan, China  
Brand Name ZTE Model Number ZTE SM-10km-1310-1.25G  
Product Name ZTE SM-10km-1310-1.25G  
Part number SM-10km-1310-1.25G  
Payment T/T



[Contact Us](#)



### ZTE FTGK Service Board ZTE FTGK Price and specs ycict

ZTE FTGK Service Board is 48-Port P2P Gigabit Ethernet Interface Board using WDM technology and single optical fibre to transmit and receive signal. ZTE

[Contact Us](#)

### ZTE unveils symmetric 8-port 50G PON



### Combo and

ZTE has unveiled the industry's first symmetric 50G PON ONU product, the ZXEN G300-N9. This ONU provides a 50G Ethernet optical port on

[Contact Us](#)



### ZTE Gpon Service Board C+/C++ SFP Module 8Ports GTGO For

Hardware Interface: The ZTE Gpon Service Board C+/C++ SFP Module is compatible with the ZTE C320 and C300 OLT (Optical Line Terminal) devices. These OLTs are part of ZTE's GPON (Gigabit

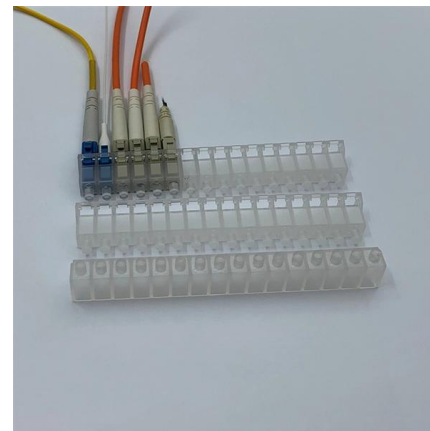
[Contact Us](#)



### Demystifying the ZTE GPON OLT B+ Optical Transceiver for Next

What this guide covers: In the rapidly expanding landscape of gigabit connectivity, the foundation of a robust Fiber-to-the-Home (FTTH) network relies heavily on the quality of its optical components. This

[Contact Us](#)



### ZTE GPON OLT Class C+ Brand New SFP optical transceiver

The ZTE GPON OLT Class C+ Brand SFP is a high-performance small form-factor pluggable (SFP) optical transceiver module designed for Gigabit Passive Optical Network (GPON) deployments.

[Contact Us](#)

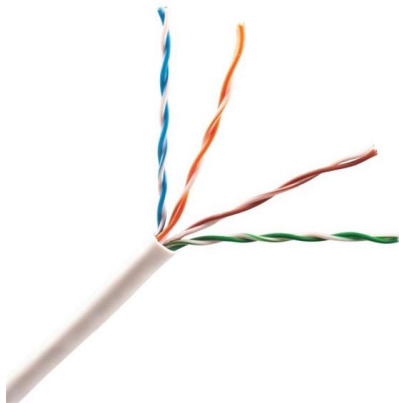




## The Ultimate Technical Guide to the ZTE GPON OLT C+ Optical

The ZTE GPON OLT C+ optical transceiver serves as the critical lynchpin in this evolution. By upgrading to Class C+ modules, network operators unlock a superior 32 dB optical link budget, enabling

[Contact Us](#)



### Single Fiber 40 km SFP Optical Transceiver: ZTE

ZTE SFP-SDA-GE-S40K is SFP Single Fiber Transceiver supporting 1.063-1.25Gbps data rate in 40 km distance over Single-Mode Fiber (SMF).

[Contact Us](#)

### ZTE 033030100016

It won't have any compatibility problem with your ZTE devices. And the ZTE 1.25G 1310nm SM 10km SFP Optical Module EOLS-1312-10-D SP-GB-LX-CDFM-ZT is

[Contact Us](#)



### ZTE 033030100160

ZTE 033030100160 GPON OLT-CLASS C+ SFP Transceiver This ZTE SFP transceiver provides 2.4Gbs/1.2Gbs-C+ throughput up to 25km over single-mode fiber (SMF) using a wavelength of

[Contact Us](#)



## ZTE GPON OLT C++ Optical Transceiver: A Comprehensive Guide to

What: This deep-dive technical whitepaper explores the operational mechanics and strategic advantages of the ZTE GPON OLT C++ optical transceiver, a critical Small Form-factor

[Contact Us](#)



### New Original fiber optic transceiver SFP ZTE GPON OLT Class C++ module

The ZTE GPON OLT Class C++ fiber optic transceiver is designed for GPON OLT and utilizes an LC optical interface. With a transmission distance of 20km and a wavelength of 1310nm, it can transmit

[Contact Us](#)



### ZTE SFP-GE-RJ45 Compatible 100BASE-T Copper

This ZTE SFP-GE-RJ45 compatible SFP module supports 1000Base-T connectivity up to 100m (328ft) over Cat5/Cat5e or above Ethernet cable via RJ45 connector.

[Contact Us](#)



### MODULE 10Gb/1310nm SFP+ sm Optical Transceiver Mod. 10KM ZTE

The ZTE 10Gb 1310nm SM 10KM SFP+ Module is a high performance optical transceiver, designed for single-mode fiber links up to 10km. Compatible with ZTE equipment, it is ideal for

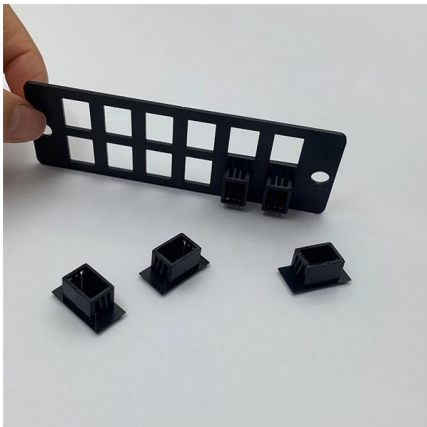
[Contact Us](#)



### Zte Sm-80km-1550-1.25g-c Gigabit Sfp Optical Module, Oem

ZTE SM-80km-1550-1.25G-C optical module offers 1.25Gbps Gigabit single-mode dual fiber, ideal for FTTX. Enjoy 1-year warranty and reliable performance., Alibaba

[Contact Us](#)



### Q& A interview from ZTE

Thirdly, ZTE pioneered the industry's most compact 800G OTN pluggable module, achieving a 60% reduction in size, 68% reduction in power

[Contact Us](#)

### ZTE SFP-10GE-M Compatible 10GBASE-SR

ZTE SFP-10GE-M compatible 10GBASE-SR SFP+ for ZXR10 and ZXCTN platforms. 850nm, 300m OM3 / 400m OM4, dual LC, DDM. MSA-compliant. EUR7.90.

[Contact Us](#)



## Contact Us

---

For datasheets, pricing, or custom fiber access solutions, please visit:  
<https://frindel.es>