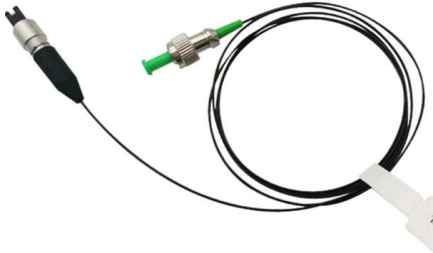


ZJ-5 type cable tray support





ZJ-5 type cable tray support



Types of Cable Trays - Advantages, Applications and Sizes

Explore the types of cable trays, their advantages, applications, and standard sizes. Learn how they improve cable management and support various industries.

[Contact Us](#)

Cable Management Support Systems

Cable Support Systems are well designed to provide necessary support for cable trays, cable ladders and trunkings. Cable supports are manufactured according to

[Contact Us](#)



Lan cable, Coaxial cable, Fiber optic, Bus cable

Categories Current Control Cable IN power cable & Average loading capacity tray type and ladder type cable trays shall be lower then rated average loading capacity.

[Contact Us](#)

Decoding Cable Tray Support Structures: Tips and Insights

Discover efficient cable tray support structures for optimal cable management. Learn about hanger, wall-mounted, and Unistrut systems for safer





Cable Tray Accessories, Support Bracket, Fittings & More

Buy your cable tray accessories online, along with other cable management solutions like cable ties and cable glands, to complete your installation. We offer a seamless online ordering experience and fast,

[Contact Us](#)

What are the main types of cable tray?

Introduce the main types of cable tray including ladder cable tray, perforated cable tray, solid bottom cable tray and wire mesh cable tray.

[Contact Us](#)



Best Practice Guide to Cable Ladder and Cable Tray Systems

Cable ladder systems and cable tray systems are designed for use as supports for cables and not as enclosures giving full mechanical protection. They are not intended to be used as ladders, walk ways

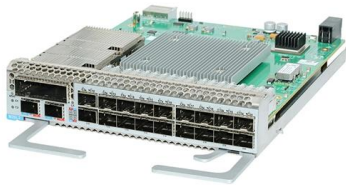
[Contact Us](#)



Cable Tray Types and Sizes

What is Cable Tray Systems? An electrical cable tray is a type of containment system used to support insulated electrical cables for power distribution, control,

[Contact Us](#)



Support trays

If required, we supply our cable carriers with a suitable support tray for your application. This ensures quiet movement of the lower run with reduced wear, reducing costs and design work.

[Contact Us](#)

Types of Cable Trays & Installation Guide

Explore cable tray types, materials, and installation techniques. Learn the difference between cable trays, wireways, and raceways at Cable Ties and More.

[Contact Us](#)



Stainless Steel Cable Tray

Stainless steel cable trays are made of 304, 316 grade stainless steel, which are designed into channel style, ladder style, perforated style. Stainless steel cable

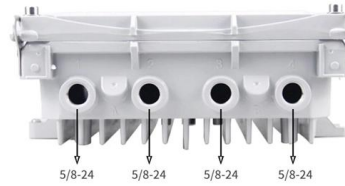
[Contact Us](#)



CABLE TRAYS, CABLE LADDERS CABLE SUPPORT SYSTEMS& CABLE

A cable tray system is used in building electrical wiring to support insulated electrical wires used for power distribution, control, and communication. Cable trays are often used for cable management in

[Contact Us](#)



Cable Tray Fitting Accessories

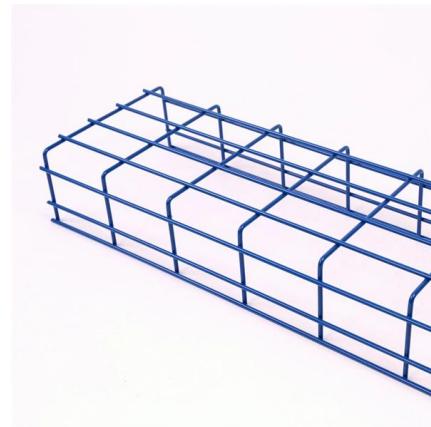
As the leading cable tray manufacturers and suppliers, JLH Electric offers a wide range of accessories and spare items, including tray supports and tray

[Contact Us](#)

Z Support Cable Trays, Size: 2.5 Mtrs

We are one of the leading organizations engaged in manufacturing and exporting a wide range of Cable Trays Perforated, Ladder Type Cable Trays, Copper Plate,

[Contact Us](#)



ET5 Cable Tray

The ET5 is a strong cable tray that gives the installer cabling depths of 78mm. Available widths range from 150-600mm, and the product is supplied in 3m lengths. Similar to the ET3, the ET5 is formed

[Contact Us](#)



Cable Support Systems Cable Tray Johor Bahru (JB),

Cable Support Systems Cable Tray, The company specializes in metering panel, cable gland, capacitor, conduit pipe accessories, copper cable, proximity sensor,

[Contact Us](#)



Cable Tray Supports & Clamps

These special heavy duty tray hold down cable tray clamps and expansion guides are ideal for fastening tray to C-Channels and beams, such as those found on bridges.

[Contact Us](#)

CABLE TRAY SYSTEMS GUIDE

The total load supported by the cable tray, uniformly distributed. This will be the combined weight of all of the cables or tray contents, any environmental loads (snow, ice, dust) and any concentrated static

[Contact Us](#)



Cable Tray Technical Guide A practical guide to product selection and

SOLID-BOTTOM CABLE TRAY Providing additional cable protection, solid-bottom cable tray is sometimes preferred to support and protect numerous small instrumentation and control cables.

[Contact Us](#)



CABLE TRAY



Cable Support Systems are well designed to provide necessary support for cable trays, cable ladders and trunkings. Cable supports are manufactured according to common standards from high quality

[Contact Us](#)



Cable trays

We offer a wide range of cable tray systems to support tubing, electrical cables and instrumentation. Our cable trays are produced in fit for purpose materials like

[Contact Us](#)



Custom Heavy-Duty Straight Steel Galvanized Cable Trays Structured

Length 2-6m (6.56-19.69ft) Surface Finishing Stainless steel SS304 SS316 Application Industrial, Construction, Managing Cables, Cable Support, Cable Laying, Cable Wiring Place of Origin

[Contact Us](#)



Ladder Type Cable Tray - Intech Support

LADDER TYPE CABLE TRAY Section Suitable for a variety of applications from light industrial to heavy mining installation Cable ladder in three level of? perform light,

[Contact Us](#)



Cable support system

The vertical straight connector can be used to connect cable trays with the side height 60mm. Mitre joints that rise and fall up to an angle of 60° can also be realised with this connector.

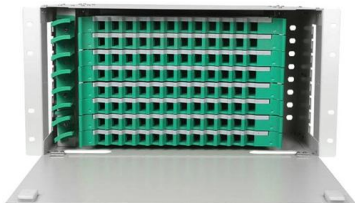
[Contact Us](#)



untitled [dubosenes]

Any assembly of cable tray straight sections, fittings and accessories that form a rigid system to support cables is a cable tray. The different types of tray designs are described below.

[Contact Us](#)



Guide to cable support systems

Four different mesh cable tray types are available, depending on the requirements, area of application and cable quantity. The innovative Magic connection system of the GRM and G-GRM mesh cable

[Contact Us](#)



Cable Tray Systems

Cable trays offer continuous support of cables, are lightweight, quick and straight forward to install just about anywhere, and generally mean that changing cabling services over the lifetime of a project is

[Contact Us](#)



Best Practice Guide to Cable Ladder and Cable Tray Systems

This guide covers cable ladder systems, cable tray systems, channel support systems and associated supports intended for the support and accommodation of cables and possibly other electrical

[Contact Us](#)



SCI Electric Public Company Limited

SCI Cable Tray, Channel Tray and Perforated Tray was designed the allowable load is the load in the case where the deflection in the longitudinal direction reaches $1/300$ the interval between supporting

[Contact Us](#)

Contact Us

For datasheets, pricing, or custom fiber access solutions, please visit:
<https://frindel.es>