

# Wiring proficiency tools for explosion-proof distribution boxes





## Wiring proficiency tools for explosion-proof distribution boxes

---



### Explosion Proof Box & Cabinet

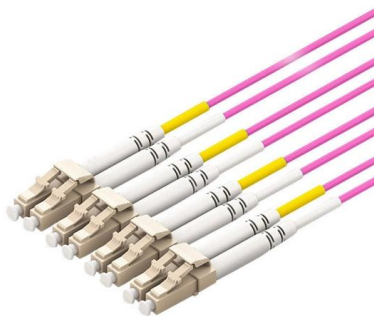
Product features: The explosion-proof control cabinet (box) can install various instruments inside. Low-voltage electrical appliances, frequency converters, PLCs, soft starters, and computer systems can

[Contact Us](#)

### What is "Explosion Proof" and When is it Needed?

What makes a fume hood classified as Explosion Proof? It is a common misconception that working with a flammable chemical automatically requires an EP fume hood. However, only a small percentage of

[Contact Us](#)



### Explosion-Proof Distribution Boxes: Special Installation Requirements

Unlike standard distribution boxes that could become shrapnel shards in volatile environments, explosion-proof containers are engineered fortresses that absorb, contain, and vent catastrophic

[Contact Us](#)

### Ex Isolation Switch/Safety Switch/Circuit Breaker Manufacturers

The main products have obtained ATEX EU explosion-proof certification and IECEx international explosion-proof certification. CZ has agents or offices in 28 countries and regions, and welcomes



### **Ex junction and terminal boxes - Explosion-Proof , mlx-ex**

GRP Ex terminal boxes What are Ex Terminal Boxes? Ex terminal boxes are protective enclosures used to connect and distribute electrical circuits safely within explosive atmospheres. They serve as

[Contact Us](#)



### **Ultimate Guide to Explosion Proof Wiring Box Solutions**

Understanding explosion proof wiring box solutions is essential for industries that prioritize safety and reliability. This guide will explore the latest developments and related industries focused

[Contact Us](#)



### **BXM (D)81 Explosion proof Distribution Boxes Lighting**

BXM (D)81 Explosion proof Distribution Boxes Lighting or Power Explosion protection to -CENELEC -IEC -NEC Can be used in Zone 1 and Zone 2 Zone 21 and Zone

[Contact Us](#)

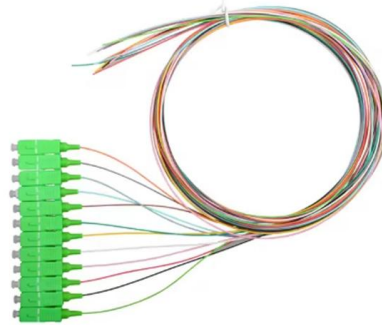




## Wiring Specifications for Explosion-Proof Distribution Boxes

Wire Protection: Wires should not be exposed to the air directly. For example, when connecting an explosion-proof pressurized enclosure to an audio

[Contact Us](#)



## Explosion-Proof Distribution Boxes & Panels Manufacturer

The explosion-proof distribution box safely delivers power in hazardous zones (oil, gas, chemical plants) with rugged, spark-resistant casing--ATEX/IECEX, IP66 certified for reliable operation in explosive

[Contact Us](#)

## Distribution Boxes and Empty Enclosures

Boxes and Empty Enclosures Distribution Boxes BXM(D)S1 Series Explosion-proof Illumination (Power) Distribution Boxes (Ex de IIB)

[Contact Us](#)



## HLDP03-Series Explosion-proof Distribution Boxes Exporter China

Home >> Products >> Explosion Proof Electric Apparatus >> HLDP03-Series Explosion-proof Distribution Boxes

[Contact Us](#)



## Explosion proof distribution box standards and installation issues

Switch terminals should be matched with the wire cross-section; wiring after component installation should be neatly arranged and tied into a bundle with nylon tape to be fastened behind the board.

[Contact Us](#)



Optical splitter cassette type refers to the port 2.0mm / 2.0mm clip-on fiber multichannel direct output with a plastic box packaging protection and easy to use.



Optical splitter rack mount type is using metal box packaging which can be installed in 19" frame or cabinet.



Optical splitter LSA box type is made by flame retardant material box or plate packaging. Mainly suitable for cable process fiber box and wall-mounted terminal box.



Optical splitter mini type refers to the port 0.9mm clip-on fiber multichannel direct output with a compact design and easy to use.



## Explosion Proof Power Distribution Boxes CE92

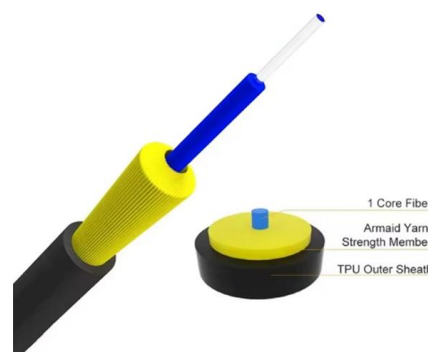
Flameproof and explosion proof, these power overhaul distribution boxes are suitable for use in hazardous areas. Specs: Ex mark: Ex de IIC T4 Gb DIP A21 TA, T4

[Contact Us](#)

## Explosion-Proof Wiring Devices :: PLATT ELECTRIC SUPPLY

1 Pole, 1-Gang, EFS Front Operated Switch, Cover Only, Non-Factory Sealed Cover Furnished with Device Mounting Screws. For use with EFD Type Outlet Boxes.

[Contact Us](#)



## How to Wire an Explosion-Proof Distribution Box and

Proper installation, wiring, and usage are critical to ensuring the safety and functionality of these systems. Below, we will discuss the correct wiring methods

[Contact Us](#)



## 6WAY EXPLOSION PROOF DISTRIBUTION BOXES,

FOR EXPLOSION-PROOF PLUG 16A, 32A CAN BE SELECTED. WIRING IS FINISHED IN THE SOCKET BOX. REASONABLE ARRANGEMENT AND

[Contact Us](#)



## Wiring Diagram of 1p, 1p+n, 2p in Explosion-Proof Distribution Box

Wiring in explosion-proof distribution boxes during installation and maintenance is a common task, particularly when extending connection lines.

[Contact Us](#)



GAIN AN IN - DEPTH UNDERSTANDING OF



- ① LED DISPLAY PANEL
- ② PROTECTOR OPERATION BUTTONS
- ③ NEUTRAL WIRE OUTPUT TERMINAL
- ④ LIVE WIRE OUTPUT TERMINAL
- ⑤ WORKING CURRENT AND VOLTAGE INSTRUCTIONS
- ⑥ FLAME - RETARDANT SHELL

## How to Install Explosion-Proof Distribution Box

3. Regularly inspect the explosion-proof distribution box for any damage to components. The installation inclination of the distribution box should

[Contact Us](#)



## BXM (D)51 Series Explosion proof Distribution Boxes

BXM (D)51 Explosion proof Distribution Boxes Explosion protection to -CENELEC -IEC -NEC Can be used in Zone 1 and Zone 2 Zone 21 and Zone 22 Class I, Zone

[Contact Us](#)



## Warom Explosion Proof Equipment , ATEX IECEX Explosion-proof

Warom specializes in manufacturing explosion-proof electrical equipment, with products covering explosion-proof lighting fixtures, explosion-proof distribution boxes, explosion-proof control

[Contact Us](#)



## Energy Distribution

BARTEC offers one of the most extensive ranges of explosion-proof and substance-resistant components, devices, and systems for controlling, switching, and

[Contact Us](#)



## Explosion-Proof Electrical Distribution Boxes: Applications in

An explosion-proof distribution box is a specialized enclosure designed to contain internal explosions and prevent the escape of flames, sparks, or hot gases. It is essential to note that these boxes are

[Contact Us](#)



## Explosion-proof Illumination (Power) Distribution Boxes

Explosion Protection to CENELEC, IEC, NEC. Can be used in Zone 1,2,21,22 Class I Division 2 Groups A, B, C, D Main switch and branch switch are operated with

[Contact Us](#)

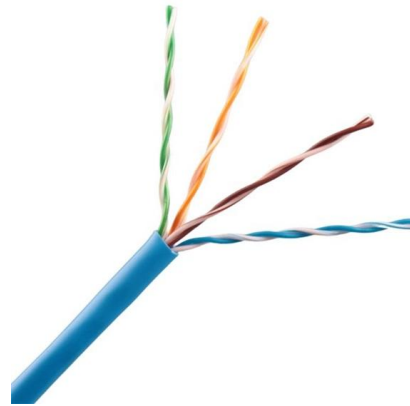




## What are the principles of connecting explosion proof distribution

What are the principles of connecting explosion-proof distribution boxes with galvanized pipes? 7 principles of connecting explosion-proof distribution box with galvanized pipe: 1 The requirements for

[Contact Us](#)



## 5 Key Factors to Consider When Selecting Explosion Proof Distribution Boxes

Selecting explosion-proof distribution boxes protects the safety of your staff in any potentially hazardous workplace. HEXLON stands out as a trusted provider of explosion-proof

[Contact Us](#)

## Terminal Box/Explosion proof electrical equipment/global certification

KHJ offers a large selection of terminal boxes and junction boxes for wiring connection in explosion hazardous areas. They are certified according to the latest ATEX and IEC EX standards.

[Contact Us](#)



## Explosion Proof Enclosures , Complete Hazardous Area

Learn everything about explosion proof enclosures for hazardous areas--design, certification, and industrial applications with ATEX, IECEx, and Class I Div

[Contact Us](#)



## Explosion-Proof Distribution Box , Product Center

Explosion-proof distribution boxes are designed to safely control and distribute electrical power in hazardous environments, preventing ignition risks.

[Contact Us](#)



## Contact Us

---

For datasheets, pricing, or custom fiber access solutions, please visit:  
<https://frindel.es>