

Wiring of 10kV switchgear





Overview

Access detailed 10KV switch switchboard equipment system diagrams to visualize component layouts, wiring connections, and protection circuits—supporting safe installation, maintenance, and troubleshooting for medium-voltage power systems. The common models for 10KV high voltage switchgear include the KYN28-12 medium-voltage switchgear and the XGN2-12 fixed high-voltage switchgear. The main part of 10kV switchgear includes vacuum circuit breaker, current transformer, On-site installation of microcomputer protection device, Operating circuit accessories (handle, indicator light, pressing plate and so on), A variety of locations of auxiliary switch. This indicates the extent of the installation, such as the number of busbars and branches, and also their associated apparatus. Medium-voltage switchgear 8DA/B is indoor, factory-assembled, type-tested, single-pole metal-enclosed, gas-insulated switchgear, for single-busbar and double-busbar applications, as well as for traction power supply systems.



Wiring of 10kV switchgear



12/24 kV medium voltage installation with switchgear type AX1

The medium voltage switchgear AX1 is not just a medium voltage cubicle, but also a complete switchgear system/installation. From a definition point of view AX1 is a primary encapsulated and air

[Contact Us](#)

Wiring design of new high voltage switchgear.

Download scientific diagram , Wiring design of new high voltage switchgear. from publication: A Novel Modularizing Design Method of 10 kV High Voltage

[Contact Us](#)



Circuit configurations (single line diagrams) for HV and

The most common circuit configurations of high and medium-voltage switchgear installations are shown in the form of single line diagrams next

[Contact Us](#)



Testing and commissioning of MV/HV switchgear

Testing and commissioning precautions This article continues the series of articles dedicated to the erection, testing and commissioning of MV/HV



Microsoft Word

Heaters suitable for operating at 230V, 60Hz, AC shall be provided to prevent moisture condensation on bus bars, current transformers, feeder/bus bar spouts and inside the switchgear enclosure. The

[Contact Us](#)



KRU "Volga" Medium-Voltage Switchgear 6 (10) kV

Volga, KRU - MV switchgear for switching, receiving and distributing 6-10 kV in networks at plants, utilities and power facilities.

[Contact Us](#)



Medium voltage products Technical guide The MV/LV transformer

s, gratings and wire meshes, fastened rigidly with a minimum deg LV components arranged on open structures or in closed cabinets. ted devices, such as MV and LV switchgear according to product

[Contact Us](#)

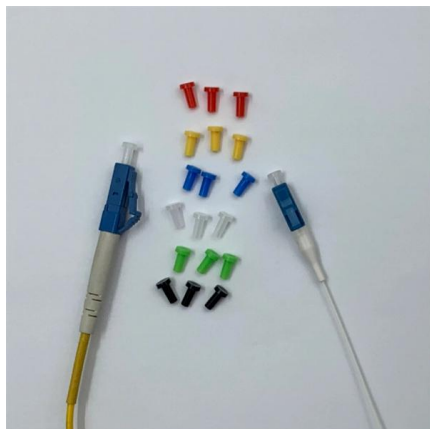




10 kv switchgear

Summary of 10kV switchgear The main part of 10kV switchgear includes:vacuum circuit breaker, current transformer, On-site installation of microcomputer

[Contact Us](#)



Volume - I Technical Specification for 11KV Indoor Switchge

Indicating Instruments Energy Meters Relays Control switches and push buttons HV Fuses Arrangement of switchgear bus bars, main connections and auxiliary wiring Code of practice for phosphating iron &

[Contact Us](#)

10kV Switchgear Control and Protection

Troubleshooting 10 kV switchgear is essential for safe and reliable operation. Common troubleshooting methods include the following. Electrical

[Contact Us](#)



10kV Switchgear Earthing Switch Setup: A Full Safety

Master a 10kV switchgear earthing switch setup with our expert guide. Discover best practices for safe operation, precise installation, and reliable

[Contact Us](#)



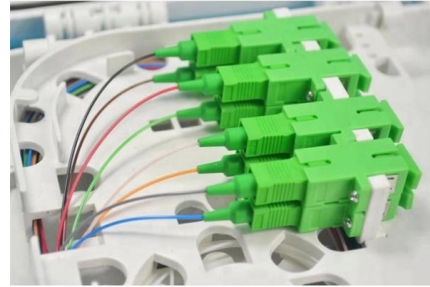
Fundamentals of medium voltage



switchgear , Eaton

Learn the fundamentals of medium voltage switchgear. Topics include "what is switchgear?", types of switchgear, types of switchgear

[Contact Us](#)



A Novel Modularizing Design Method of 10 kV High

PDF , On Jan 1, 2020, Yuan Yao and others published A Novel Modularizing Design Method of 10 kV High Voltage Switchgear for Live Maintenance , Find, read and

[Contact Us](#)

Research on modularizing design of 10 kV switchgear with line outlet

In order to improve the reliability and safety of power supply and reduce the failure rate of switchgear, this paper designs a novel high-voltage switchgear which is reliable and safe.

[Contact Us](#)



10KV switch switchboard equipment system diagram

Access detailed 10KV switch switchboard equipment system diagrams to visualize component layouts, wiring connections, and protection circuits--supporting safe

[Contact Us](#)



Circuit configurations (single line diagrams) for HV and MV switchgear

PDF file

Types 8DA10 and 8DB10 up to 40.5 kV - Siemens

These values are based on the design and empirical data for switchgear assemblies, as well as on the intended use of the switchgear under normal service conditions according to IEC 62271-1.

[Contact Us](#)



The Ultimate 10kV Transformer Installation Guide: A 15

The Ultimate 10kV Transformer Installation Guide: A 15-Point Checklist for Flawless Setup
Welcome to the definitive 10kV Transformer Installation Guide. For any

[Contact Us](#)



11 High-Voltage Switchgear Installations

11.1.1 Summary A switchgear installation contains all the apparatus and auxiliary equipment necessary to ensure reliable operation of the installation and a secure supply of electricity. Three-phase a.c.

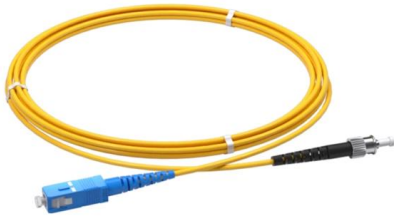
[Contact Us](#)



10KV High Voltage Switchgear, Schematic Diagram, Symbols, and

An unfolded diagram represents the wiring in a simplified manner and provides intuitive understanding. The secondary circuits are divided into AC current circuits, AC voltage circuits, DC

[Contact Us](#)



How to configure medium voltage switchgear , EEP

Rated short-time thermal current I_{th} Figure 1 -
An example of short circuit in 10kV medium-voltage switchgear An example of short circuit in 10kV

[Contact Us](#)



Air-insulated medium voltage switchgear, 12 kV/17.5 kV

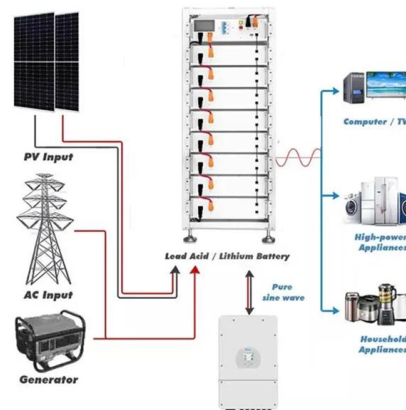
Air-insulated medium voltage switchgear, 12 kV/17.5 kV Instruction manual BA 372/04 E Your safety first - always!

[Contact Us](#)

10kV High Voltage Switchgear Types and Model Selection Guide

Understanding the three primary classification methods--by enclosure structure, by circuit breaker mounting, and by installation location--is the essential first step for engineers and project planners to

[Contact Us](#)





MEDIUM VOLTAGE SWITCHGEAR

1 - Introduction to alfa-12 alfa-12 Switchgear offers high personal and operating safety, optimal availability, secure engineering, easy operation and high efficiency with low lifecycle costs. Take our

[Contact Us](#)



Contact Us

For datasheets, pricing, or custom fiber access solutions, please visit:
<https://frindel.es>