

Will the optical module emit light if the ONU is not sending data





Overview

The ONU will only emit light passively when it receives the downstream optical signal. Downstream signals are broadcast from the OLT (Optical Line Terminal) to all ONU/ONT s, with each ONU/ONT identifying and receiving its own data using specific identifiers. It can accommodate multiple user devices such as computers, telephones, and television set-top boxes, providing users with high-speed broadband access. Describes what an optical module is and FAQs, including the fundamentals, appearance and structure, key performance counters, common types, and naming conventions of optical modules, causes of optical module failures and corresponding protection measures, types of optical modules supported by.



Will the optical module emit light if the ONU is not sending data



Optical Network Units (ONU): The Key to Connecting Fiber Networks

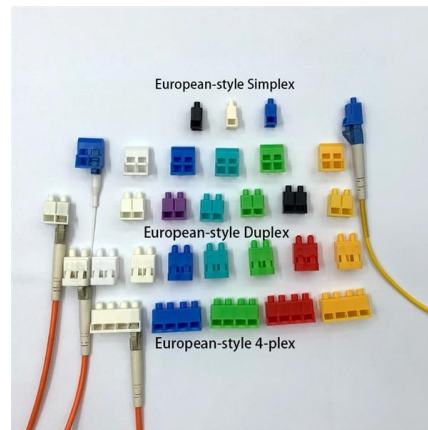
This ensures that essential services are not interrupted by less critical data traffic. Common Use Cases for Optical Network Units (ONU) Fiber to the Home (FTTH): ONUs are commonly used in FTTH

[Contact Us](#)

What are the common faults of ONU (Optical Network

PON Indicator Light (Connected to the Passive Optical Network Port) Normal State: Green light on, indicating a normal connection to the OLT (Optical

[Contact Us](#)



ONU (Optical network unit)

ONU stands for Optical Network Unit. It is a crucial component in fiber-optic communication networks. In this explanation, we will discuss the basic

[Contact Us](#)



Unveiling the Wonders of ONU: Features, Benefits,

How Does an ONU Work? On the network side, the ONU receives data from the Optical Line Terminal (OLT) via the Passive Optical Network

[Contact Us](#)



What is ONU: Concept, Features and Types

Optical Network Unit, the IEEE term for what is called an Optical Network Terminal in ITU-T terminology. ONU realizes "triple-play" applications by providing services such as data, IPTV (interactive network

[Contact Us](#)



Understanding ONU Configuration for WiFi Network Setup

By mastering the setup of the optical network unit (ONU), users can ensure seamless connectivity and optimized performance for their fiber optic

[Contact Us](#)



Maximizing Network Efficiency with ONU Technology

Maximizing Network Efficiency with ONU Technology The ever-increasing demand for high-speed data transmission has driven the development of advanced optical communication

[Contact Us](#)





Optical Network Units (ONU): a Comprehensive Guideline to Their

The Optical Network Unit (ONU) is a crucial device in fiber-optic communications, particularly within Fiber to the Home (FTTH) networks. Essentially, the ONU is a networking

[Contact Us](#)



What Is ONU Technology and Its Role in Fiber Networks?

PONs utilize optical splitters to enable a single optical fiber to serve multiple premises, reducing the amount of fiber and central office equipment

[Contact Us](#)

The impact of ONU weak light on network speed

The ONU will only emit light passively when it receives the downstream optical signal. When the ONU cannot receive the downstream optical signal, the network upstream will be interrupted.

[Contact Us](#)



Optical Network Unit (ONU)

The ONU converts optical signals transmitted over the fiber optic cable to electrical signals that can be used by the customer's equipment, such as a router or computer. It also receives and sends data

[Contact Us](#)

Demystifying ONU: A Comprehensive



Overview of

Uncover the significance of ONU in fiber optic networks. Explore the various types of ONU and their specific functions. Compare features, benefits,

[Contact Us](#)



The impact of ONU low light on optical networks and

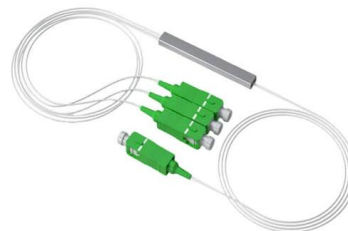
However, the uplink network speed is basically unaffected by the weak light of the ONU, which only passively emits light when it receives the downlink optical

[Contact Us](#)

How do I configure an ONU?

An ONU (Optical Network Unit) is a device used to connect end-users to a fiber optic network in FTTH (Fiber to the Home) or FTTP (Fiber to the

[Contact Us](#)



ONU Failure Analysis

Long light ONU This failure is caused by the ONU's laser for a long time. As a result, the ONUs under the entire PON port cannot communicate normally. If the ONU

[Contact Us](#)



ONU Failure Analysis

It is not only impossible to measure the abnormal light emission of ONU at the beam splitter. In addition, it is necessary to observe and monitor faulty PON ports for a

[Contact Us](#)



How to Identify and Resolve Rogue ONU/ONT Issues in

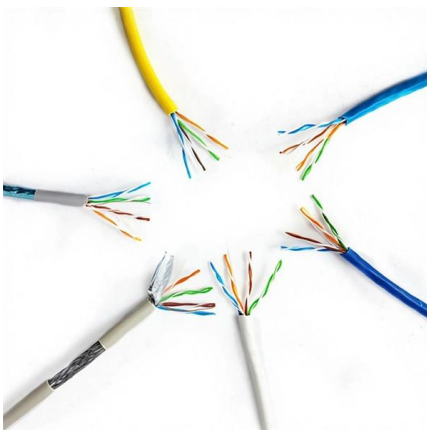
When an ONU/ONT does not transmit within its assigned time slot and emits light abnormally, it causes signal collisions within the channel. Such an

[Contact Us](#)

Understanding ONU: The Optical Network Unit

2. Receive broadcast data sent by OLT: ONU can receive broadcast data sent by the Optical Line Terminal (OLT), allowing for efficient data transmission.

[Contact Us](#)



What Is an Optical Module and Its FAQs (V200)

What Is an Optical Module and Its FAQs (V200) Describes what an optical module is and FAQs, including the fundamentals, appearance and structure, key performance counters, common types,

[Contact Us](#)



Optical Network Unit (ONU): Definition, Working Principles, and Future

The Optical Network Unit (ONU) is central to FTTx deployments, converting optical signals into usable services and ensuring efficient, secure, and reliable connectivity.

[Contact Us](#)



News

The optical port of the ONU is a core, vulnerable component that enables optical-to-electrical signal conversion. Its internal optical module fiber core is made of glass, and the coupling surface uses high

[Contact Us](#)

How do I troubleshoot ONU connection problems?

No Optical Signal Inspect the fiber optic cabling from the outside plant for damage. Fix any bends or crimps in the cable. Clean the fiber connectors on the cabling and ONU using compressed

[Contact Us](#)



What are the common faults of ONU (Optical Network)

Fault State: Not lit or blinking red, indicating fiber optic connection issues, OLT port issues, or PON module faults. Solutions include checking fiber

[Contact Us](#)



The Working Principle of OLT and ONU Optical Modules

The working principle of OLT and ONU optical modules relies on the precision and reliability of their components. The lasers must emit stable and accurate optical

[Contact Us](#)



Optical Network Unit (ONU): Definition, Working Principles, and Future

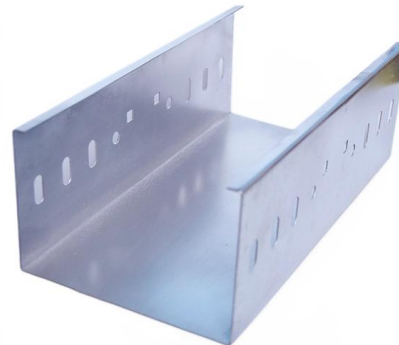
? How an ONU Works
Optical Signal Reception: Receives downstream signals from the OLT.
Signal Demodulation: Converts optical signals into electrical form for processing. Data

[Contact Us](#)

What Is an Optical Network Unit (ONU)? Easy Guide for Beginners

Confused about ONUs in fiber networks? This beginner-friendly guide explains what an Optical Network Unit is, how it works, why it's important, and the difference between ONU and ONT.

[Contact Us](#)



ONU failures and solutions-1

Diagnosis method: add a register command to confirm whether the optical module emits a long light, confirm whether the board is calibrated, and the

[Contact Us](#)



The impact of ONU low light on optical networks and

There are many factors that affect the user's Internet experience, and ONU low light mainly affects the network speed. In order to understand the impact of ONU low

[Contact Us](#)



Defining ONU: Optical Network Unit

Signal Modulation and Transmission: The ONU receives data from customer devices through its electrical interfaces. It then modulates this data into optical signals suitable for transmission over the

[Contact Us](#)

Contact Us

For datasheets, pricing, or custom fiber access solutions, please visit:
<https://frindel.es>