

Width of Portuguese galvanized cable trays





Overview

Required Tray Width = (Total Cable Cross-Sectional Area ÷ Fill Ratio) ÷ Tray Height
Where: Project: Industrial control system with 20 power cables and 35 control cables
Given: Calculation: Recommendation: Use 150mm or 200mm cable tray to allow 25% future expansion. The mechanical and electrical characteristics, tests, certifications, overall quality management, recommendations mentioned. Industry standards offer a wide range of nominal widths to accommodate everything from small control circuits to large power and solar DC trunk runs. We, one of the leading Galvanized Cable Tray Manufacturers in Portugal, bring trays that are designed to offer superior durability, corrosion resistance, and efficient cable management solutions for various applications. The comprehensive voestalpine Metsec cable tray range consists of three systems ranging from the light duty non-return flange cable tray to two systems with cable-friendly return flange trays, medium duty 25mm deep and heavy duty 50mm deep.



Width of Portuguese galvanized cable trays



Cable Trays

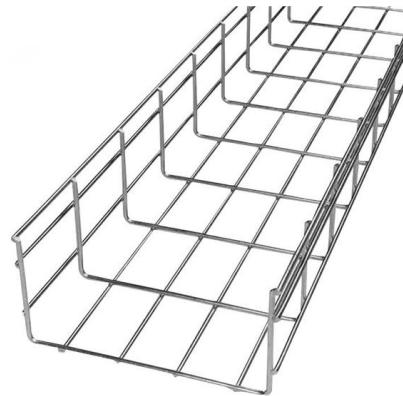
Heavy Duty Cable Tray Systems Heavy duty cable trays and cable ladders are manufactured from pre-galvanized or hot-dipped galvanized sheet metal,

[Contact Us](#)

STANDARD PERFORATED CABLE TRAY

STANDARD PERFORATED CABLE TRAY Suitable for power and data cable routing in industrial, commercial, and infrastructure projects. Manufactured from high-quality GI, Hot Dip Galvanized,

[Contact Us](#)



Product Specifications: CABLE TRAY

FDG CABLE TRAY FDG Cable Tray is designed to continuously support cable systems including; Power, Data, and Audio Visual. A quick and easy system to install without the need for specialised

[Contact Us](#)

Buy BEC Pre Galvanized Iron Hot Dipped Galvanized Ladder Cable Trays

Thickness: 2 mm Length: 2.5 m Width: 375 mm
Dhaarna Pre Galvanized Iron Galvanized
Commercial, Industrial Ladder Cable Trays 100 mm 600 mm 2 mm Request bulk pricing Product Match: 42% Min.



Cable Tray Size and Dimensions: How to Choose the

Learn how to calculate the perfect cable tray size and dimensions for your electrical project. This guide covers load capacity, fill ratios, and industry

[Contact Us](#)



Cable Tray Systems

CT Cable Tray 75-600mm width, 20mm side wall, 2.4m lengths, perforated bottom High Sided CT Cable Tray Multiple width, height and profile combinations, 3m heavy duty lengths Tray Covers Flat,

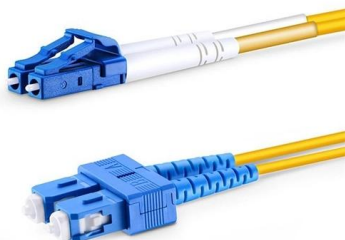
[Contact Us](#)



cable tray technical specifications

Armorduct cable tray systems are usually assembled using M6 roofing bolts particularly for couplers, fishplates and connection to supporting framework. It should be noted that independent testing has

[Contact Us](#)





45° Vertical Outside Riser Galvanized Cable Tray Ladder, 4" D x 6" W

The Galvanized Cable Tray Ladder is a lightweight, durable solution designed to organize and support cables in industrial, commercial, and telecom installations.



[Contact Us](#)

Product Specifications: CABLE TRAY

FDG CABLE TRAY ng; Power, Data, and Audio Visual. A quick and easy system to install without the need for specialised tools or equipment, makes it a first choice for Comm solution that works for your



[Contact Us](#)

Cable Tray Technical Specifications , PDF

The document provides a technical data sheet for cable trays including ladder and

[Contact Us](#)



Cable Tray Technical Guide A practical guide to product selection and

Cable Tray Technical Guide A practical guide to product selection and installation This guide for engineers and installers has been developed by ABB as a practical reference regarding cable tray

[Contact Us](#)

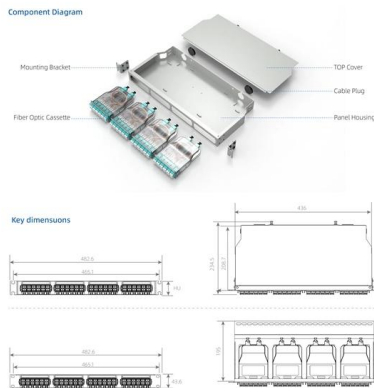




cable tray system

Straight sections of solid bottom cable trays constructed from single sheet of metal, providing excellent protection from external damage. They are used primarily for intrumental control,

[Contact Us](#)



GUIDE CABLE TRAYS TECHNICAL

cable trays are equivalent. The mechanical and electrical characteristics, tests, certifications, overall quality management, recommendations mentioned in this technical guide only apply to our own cable

[Contact Us](#)

Cable Tray Specifications and Sizes

The document specifies requirements for cable trays, including that they be fabricated from galvanized sheet steel in standard lengths and widths. It provides

[Contact Us](#)



GUIDE CABLE TRAYS TECHNICAL

In accordance with its continuous improvement policy, Legrand reserves the right to change the specifications and illustrations without notice. All illustrations, descriptions and technical information

[Contact Us](#)

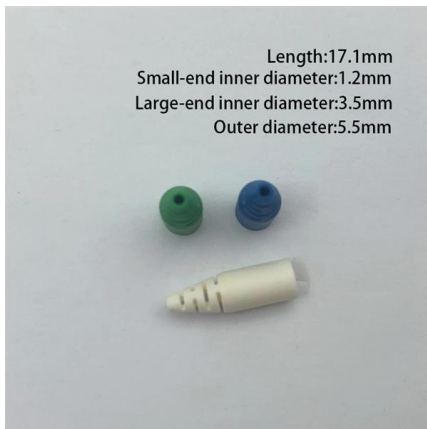




Cable Tray Dimensions Guide: Standard Sizes, Tray

Explore standard sizes by tray type, understand width and depth limits, and see how to calculate and choose compliant cable tray sizes for real projects.

[Contact Us](#)



Cable Tray Technical Guide A practical guide to product selection and

In designing supports for a cable tray system, consideration should be given to the loads associated with future cable additions and any additional loading that may be applied to the cable tray system (e.g.,

[Contact Us](#)

Galvanized Cable Tray In Portugal

What are Galvanized Cable Trays? They are a type of cable support system manufactured from steel sheets coated with a zinc layer through a hot-dip galvanization process. This zinc coating provides

[Contact Us](#)



Cable Tray Size Guide: How to Choose the Right Dimensions

Complete cable tray sizing guide with standard size chart, NEC calculation methods, and real engineering examples. Learn how to select the right cable tray dimensions for your project.

[Contact Us](#)



Galvanized Cable Tray 100mm x 50mm

Galvanized cable tray with a size of 100mm x 50mm stands as a fundamental solution for efficient cable management in contemporary industrial and

[Contact Us](#)



Cable Tray,Steel Channel Cable Tray,Steel Cable

Cable Tray,Steel Channel Cable Tray,Steel Cable Tray,steel cable tray price,Stainless Steel Cable Tray,galvanized steel cable tray,Perforated Cable

[Contact Us](#)

Cable Tray Straight Lengths , Cable Management , Metsec

We offer a range of cable tray straight lengths available in 100mm, 150mm, and 300mm up to 900mm depending on your needs. Available in pre- or post

[Contact Us](#)



Wire Mesh Cable Trays Technical Information Detailed,

Wire Mesh Cable Tray Detailed Information: a. A job site, field adaptable support system primarily for low voltage telecommunication and fiber optic cables. These

[Contact Us](#)



Cable Tray Specifications and Sizes , PDF , Sheet Metal

Pre-galvanized cable trays are made of rolled mild steel coated with 80-100 GSM of zinc. Delivery is within 5-6 working days. Hot-dip galvanized options are made of

[Contact Us](#)



Microsoft Word

Bolted Rung Type Features Design as per Bangalore Cable Trays Standard of Bolted Rung Type. I.e. Rungs and Side Members i.e. Side Rails of a Ladder Tray shall be sent in knocked down condition to

[Contact Us](#)



Contact Us

For datasheets, pricing, or custom fiber access solutions, please visit:
<https://frindel.es>