

# **White tail ray 0 5 meters**





## Overview

---

Whiptail rays are commonly found in shallow tropical water, but they may also be found in temperate regions. These rays specifically live sometimes buried in sand or mud or even near coral reefs on continental shelves, or the shelf created when part of a continent is under water.



## White tail ray 0 5 meters

---



### spotted eagle ray

Spotted eagle rays have flat disk-shaped bodies, are deep blue or black with white spots on top with a white underbelly, and distinctive flat snouts similar to a duck's

[Contact Us](#)

### Smooth Stingray, *Dasyatis brevicaudata* (Hutton, 1875)

Smooth Stingray, *Dasyatis brevicaudata* (Hutton, 1875) Identification The Smooth Stingray usually has irregular rows of small white spots on the upper surface



[Contact Us](#)



### Spotted eagle ray

Basic facts about Spotted eagle ray: lifespan, distribution and habitat map, lifestyle and social behavior, mating habits, diet and nutrition, population size and status.

[Contact Us](#)

## 44 Different Types of Rays: Identification Guide

These rays' wide-ranging habitat in tropical and temperate waters worldwide correlates with their name, indicating their ability to thrive in the pelagic



### Drone-Based Tracking of the Fine-Scale Movement of a

This study used drones to investigate the drivers of the fine-scale movement of rays in coastal estuaries using the short-tail stingray (*Bathytoshia*)

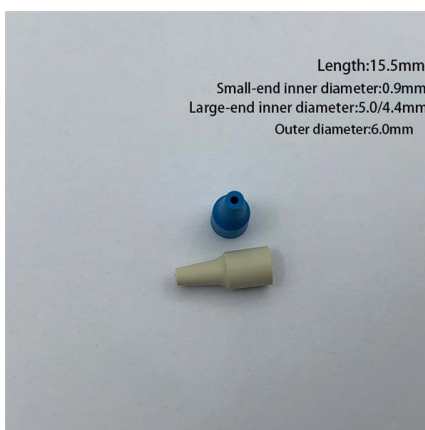
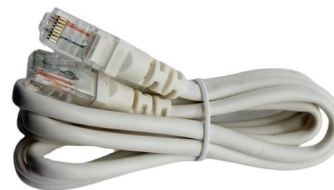
[Contact Us](#)



### Conserving the Short Tail Stingray: Threats and Efforts

Explore short tail stingray facts and their conservation status. Learn about these unique creatures and why they need protection.

[Contact Us](#)



### Whiptail stingray

Whiptail rays are commonly found in shallow tropical water, but they may also be found in temperate regions. Having flat bodies, they are demersal, meaning they live at the bottom of a body of water. These rays specifically live sometimes buried in sand or mud or even near coral reefs on continental shelves, or the shelf created when part of a continent is under water. Whiptail rays typically inhabit shallow coastlines of 100 to 200 meters down, but some go as far as 600 meters. To avoid being preyed upon



## How Big Are Eagle Rays? A Look at Their Impressive Size

Discover the impressive dimensions of eagle rays. This article explores how their size varies across species and what factors contribute to their remarkable scale.

[Contact Us](#)

[Contact Us](#)



## Spotted Eagle Ray

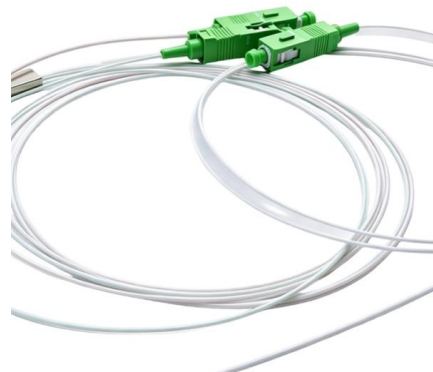
After seeing my spotted eagle ray photo, many people have asked me "Are their tails really that long?" or "Are their tails real?" Yes, they are. Eagle rays

[Contact Us](#)

## Bathytoshia brevicaudata, Short-tail stingray : fisheries, gamefish

Reputed to be the largest stingray in the world weighing more than 350,000 g (Ref. 6871). Frequently raises its tail in a scorpion-like fashion when approached, but is considered more as inquisitive rather

[Contact Us](#)



Fast shipment in stock Default white and black, contact customer service for notes

4U standard model



## Eagle ray - Myliobatis tenuicaudatus

This species is part of the Family Myliobatidae, commonly referred to as the eagle rays, which are known for their characteristically long, whip-like tails

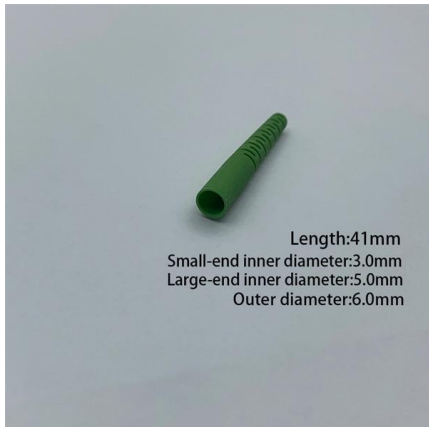
[Contact Us](#)



### Eagle ray - *Myliobatis tenuicaudatus*

The Bull Ray, Bullray, Bull-ray, Cowfish, Cowray, Eagle Ray, Fly-aways, Mill Ray, Millray, New Zealand Eagle Ray, Whip Ray, Whiptail Ray, Australian Eagle Ray,

[Contact Us](#)



### Cowtail stingray

The cowtail stingray (*Pastinachus sephen*) is a species of stingray in the family Dasyatidae, widespread in the Indo-Pacific region and occasionally entering

[Contact Us](#)

### Coral Grand Divers

Hier sollte eine Beschreibung angezeigt werden, diese Seite lässt dies jedoch nicht zu.

[Contact Us](#)



### RadEye Selection Guide

The characteristic features of this versatile pocket meter are the small size, the ease and flexibility of operation and its superior measurement performance, which is provided by the use of sophisticated

[Contact Us](#)



### Manta Ray - Discover Fishes

Manta ray, Atlantic manta, Australian devilray, blanketfish, devil ray, devilfish, devil-ray, eagle ray, giant devil ray, giant manta, giant Atlantic manta,

[Contact Us](#)



### Spotted Eagle Ray

All about the Spotted Eagle Ray - characteristics, life expectancy, distribution, behavior, diet, predators, interesting facts, and much more.

[Contact Us](#)

### Laser hazard distance equations

For all lasers of this type, the ED 50 distance (marked "50/50" on the chart) is 31.6% of the Nominal Ocular Hazard Distance.

[Contact Us](#)



### Eagle ray

The eagle rays are a group of cartilaginous fishes in the family Myliobatidae, consisting mostly of large species living in the open ocean rather than on the sea bottom. Eagle rays feed on mollusks and

[Contact Us](#)



## Spinetail Devil Ray: The Ocean's Endangered Acrobat

A spinetail devil ray is distinguished from its larger cousin, the manta ray, by its mouth. A spinetail devil ray has a subterminal mouth on the underside of its head, whereas a manta ray has a

[Contact Us](#)



## Dasyatidae (whiptail stingrays)

Underside white, tail darker and without bands. A small colourful angular stingray with small, round, bright blue eyespots on a reddish-brown background, tail only

[Contact Us](#)

## Round ribbontail ray Facts for Kids

Kids Encyclopedia Facts The round ribbontail ray (*Taeniura meyeni*) is a type of stingray found in the warm, shallow waters of the Indo-Pacific Ocean and around

[Contact Us](#)



## How Big Do Eagle Rays Actually Get?

These rays can weigh up to 507 pounds (230 kg). The Whitespotted Eagle Ray (*Aetobatus ocellatus*) can also grow up to 9 feet (2.7 meters) across and weigh around 440 pounds

[Contact Us](#)



**BYJU'S Online learning Programs For K3, K10, K12,**

Short wavelength radiation such as Gamma, X-rays, and ultraviolet is high energy and can be very dangerous. Longer wavelength radiation such as radio,

[Contact Us](#)



**Visible Light Spectrum Overview and Chart**

Shining white light through a prism causes the wavelengths to bend at slightly different angles due to optical refraction. The resulting light is split across

[Contact Us](#)

**Whitespotted Eagle Ray (Aetobatus ocellatus)**

Whitespotted Eagle Ray (Aetobatus ocellatus)  
The Whitespotted Eagle Ray (Aetobatus ocellatus) is a stunning marine creature that graces the warm waters of tropical and subtropical oceans. Known for



[Contact Us](#)



**Mangrove whipray**

The mangrove whipray (Urogymnus granulatus) or whitetail stingray, is a species of stingray in the family Dasyatidae. It is widely distributed in the Indo-Pacific region from the Red Sea to northern Australia

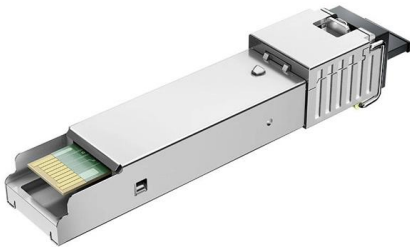
[Contact Us](#)



## 44 Different Types of Rays: Identification Guide

These rays inhabit marine and brackish waters, usually at depths between 5 and 100 meters. They prefer areas close to the

[Contact Us](#)



### Manta ray

Manta rays are members of the order Myliobatiformes which consists of stingrays and their relatives. The genus Manta is part of the eagle ray family

[Contact Us](#)

## Contact Us

---

For datasheets, pricing, or custom fiber access solutions, please visit:  
<https://frindel.es>