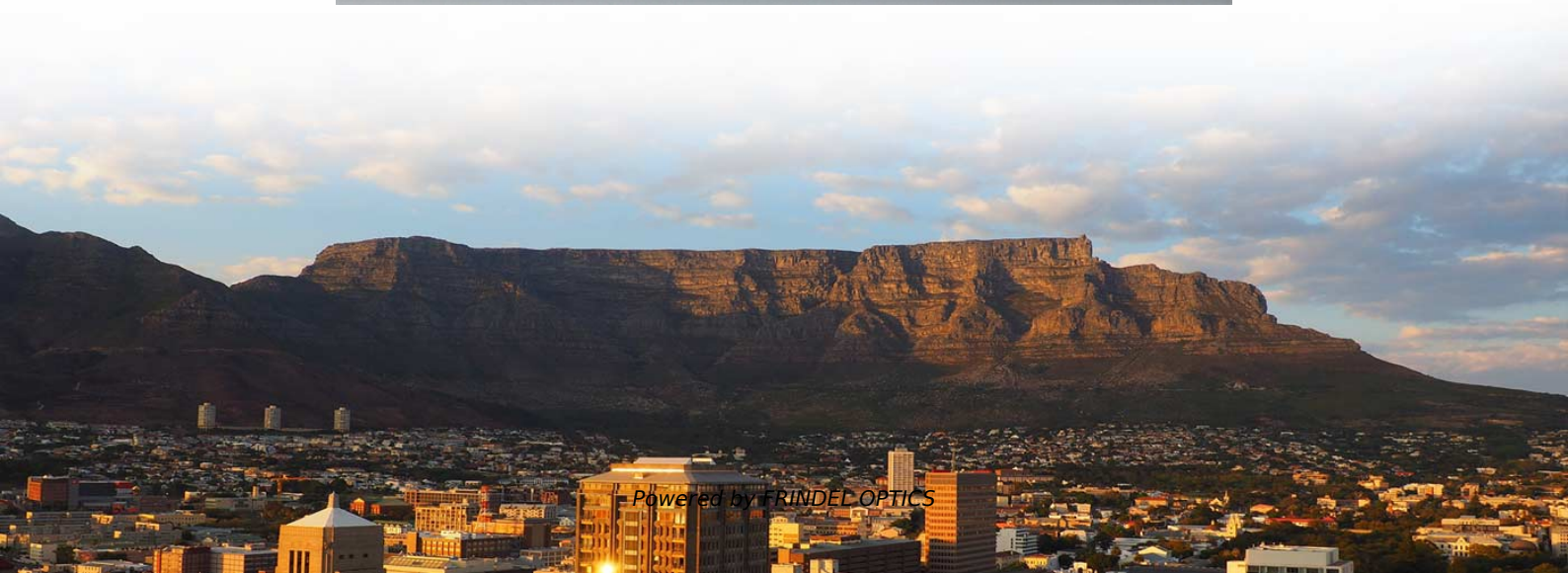


# **Where is the ground wire for the primary distribution box**





## Overview

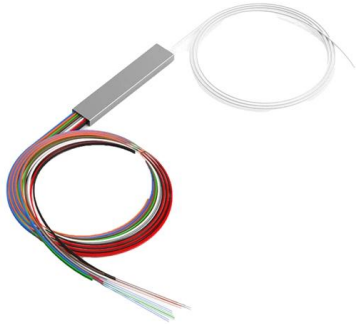
---

26 mm<sup>2</sup> (10 AWG) ground wire must be used, and in all other markets a 6 mm<sup>2</sup> must be used. The correct connection method of Distribution box grounding wire mainly includes the following steps: 1. It houses the circuit breakers that control the flow of electricity to different areas of the building, ensuring safety and preventing electrical overloads. Whether in a home or an industrial facility, this box keeps your electrical setup organized, functional, and efficient.



## Where is the ground wire for the primary distribution box

---



### Breaker Box Wiring: Which Wires Are Neutral and

It can be difficult to tell where the neutral or ground wires are

[Contact Us](#)



### Electrical Panel Grounding and Bonding

The electricity from the main can be wired in one of two different ways: It stays within the main panel and goes to the circuit breakers that lead to each branch circuit;

[Contact Us](#)

### on video How to Wire a Home Distribution Box

How to Wire a Home Distribution Box - Step-by-Step , Distribution DB box wiring diagram  
Welcome to our channel! In this video, we'll walk you through the

[Contact Us](#)

### Product Catalog



### Single Phase Distribution Box Wiring Diagram for

Wiring Accessories for Single Phase Distribution Board Main Distribution Board or Fuse Boards (Consumer Unit) usually contains on the following three main units

[Contact Us](#)



### How To Run A Ground Wire To An Electrical Panel Box

Check local codes for appropriate size and type of grounding wire (usually #4 bare copper). Some localities require installation of two grounding rods. Connect these by running the wire

[Contact Us](#)



### DISTRIBUTION BOX

Each DISTRIBUTION BOX and controller must be grounded. On the US market, a 5.26 mm<sup>2</sup> (10 AWG) ground wire must be used, and in all other markets a 6 mm<sup>2</sup> must be used.

[Contact Us](#)



### How To Wire A Distribution Board (DB Board): A Step-By-Step Guide

A distribution board (DB board), also known as a fuse box or breaker panel, is essential for managing electrical circuits in a building. It distributes electrical power from the main supply to

[Contact Us](#)

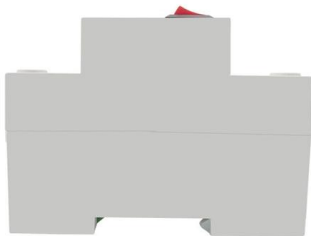
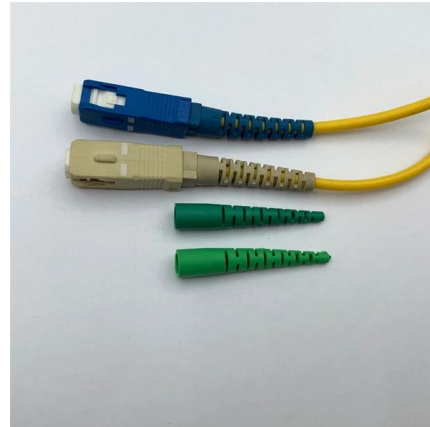




## ITPro Today, Network Computing, IoT World Today combine

ITPro Today, Network Computing and IoT World Today have combined with TechTarget . The page you are looking for may no longer exist.

[Contact Us](#)



## PLOS One

Teich and colleagues use a large language model to construct a large-scale database documenting all mentions of animal species in texts from 19th-century Württemberg in an effort to

[Contact Us](#)

## Where Does the Neutral Wire Go in a Breaker Box? -

Where Does the Neutral Wire in Breaker Box Go  
The neutral or white wire is usually connected to the breaker box's neutral bus bar. At the same time,

[Contact Us](#)



## Size determination, installation method and wiring mode

The distribution box is the central hub of the home circuit and the general control of our daily power consumption. It is an indispensable electrical equipment. If there

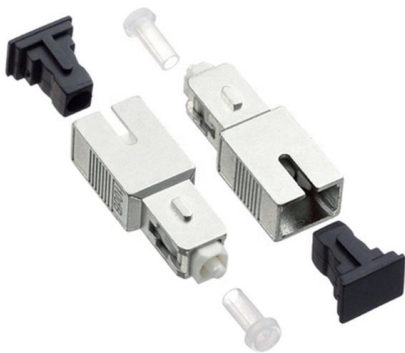
[Contact Us](#)



## DISTRIBUTION BOX

Each DISTRIBUTION BOX and controller must be grounded. On the US market, a 5.26 mm<sup>2</sup> (10 AWG) ground wire must be used, and in all other markets a 6 mm<sup>2</sup> must be used.

[Contact Us](#)



## Distribution Box Wiring Steps

?Wiring and Binding? ?Wiring Direction?: Wiring between the main circuit breaker and each branch circuit breaker in the box generally goes on the left, and

[Contact Us](#)

## Grounding System Installation Standards for Distribution Boxes and

Hey there! If you're working with electrical systems, you know that grounding isn't just some bureaucratic requirement--it's literally the difference between a safe, functional system and a potential disaster.

[Contact Us](#)



## Optical ground wire

Optical ground wire An optical ground wire (also known as an OPGW or, in the IEEE standard, an optical fiber composite overhead ground wire) is a type of cable that is used in overhead power lines.

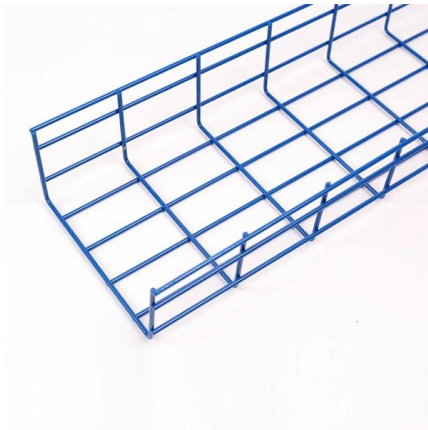
[Contact Us](#)



## Distribution Box Guide: Types, Components & Solutions

Understand distribution boxes (DB boxes) in 5 minutes. Learn about types, components, functions, and uses. Find the perfect DB box for your needs.

[Contact Us](#)



### How to Wire a Home Distribution Box

The above mentioned electrical wiring accessories and protective devices are used to control and distribute electric supply (safely to connected

[Contact Us](#)

### Insulator (electricity)

The term insulator is also used more specifically to refer to insulating supports used to attach electric power distribution or transmission lines to utility poles and

[Contact Us](#)



### The Importance of Ground Wires in the Breaker Box: A

The ground wire is typically connected to the metal frame of the breaker box and to various metal components throughout the building, such as water pipes or

[Contact Us](#)





## HOUSE :: ELECTRICITY :: DISTRIBUTION PANEL ::

neutral wire Wire having no electric charge that allows the current to return to the distribution panel and the grid.

[Contact Us](#)



### How to Wire a Single Phase Breaker Box: Step-by-Step

The grounding wire should be connected to a ground bar and securely attached to a grounding rod or a water pipe. This will provide a safe path for electrical faults to

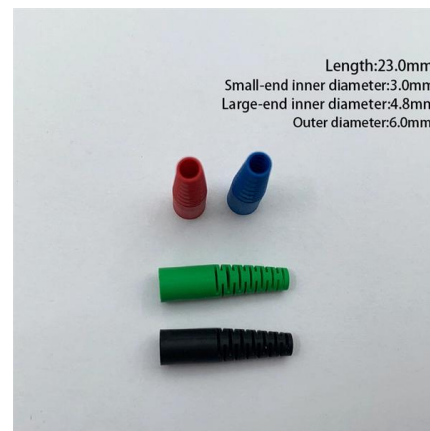
[Contact Us](#)



### Electrical Box Ground Wire Connectors & Connections

How to make proper & safe electrical ground wiring connections in the box: This article describes options for connecting a metal electrical box to the grounding conductor & connecting the grounding

[Contact Us](#)



### Understanding Circuit Breaker Wiring Configurations in

Correct wiring methods for circuit breakers within distribution boxes are fundamental to ensuring electrical safety and compliance with established codes.

[Contact Us](#)



## A Step-by-Step Guide to Wiring an Electrical Panel Box

Find out how to properly wire an electrical panel box with a comprehensive wire diagram and step-by-step instructions.

[Contact Us](#)



## Correct Connection Method Of Grounding Wire Of

Open the distribution box and find the position marked with the grounding plate or PE letter. This position is the connection point of the grounding

[Contact Us](#)

## How To Run A Ground Wire To An Electrical Panel Box

Your service panel's ground wire prevents a line fault from becoming a shocking experience. By shunting excess line voltage back to the panel's neutral pole, the ground current

[Contact Us](#)



## The installation requirements for the distribution box

Learn how to install a distribution box safely and correctly. Covers wiring, placement, standards, and expert tips for a compliant setup.

[Contact Us](#)



## Contact Us

---

For datasheets, pricing, or custom fiber access solutions, please visit:  
<https://frindel.es>