

# **Where is the dedicated server rack for AI servers**





## Where is the dedicated server rack for AI servers

---



### AI Server Racks , High-Performance Rack Cabinets for Advanced

AI server racks are deployed in environments where advanced compute workloads are central to operations. Typical deployment environments include enterprise and hyperscale data centers,

[Contact Us](#)

### AI data center growth: Meeting the demand , McKinsey

Soaring demand for AI data centers has ushered in a new area of growth. We explore these new opportunities for companies and investors across

[Contact Us](#)



### Rent a Server Online , Professional Hosting with lots of

Dedicated servers With a dedicated server, you rent an entire physical server whose resources (CPU, RAM, memory, network) are not shared with others. We offer a

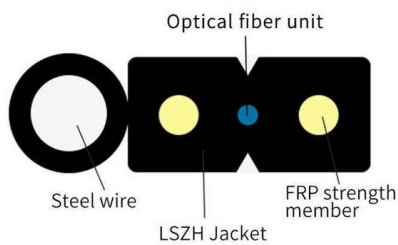
[Contact Us](#)



### Data center modernization - AI server integration

Learn how to retrofit your data center for AI servers with expert tips on power, cooling, and scalability for future-ready infrastructure.

[Contact Us](#)



### Top 12 NVIDIA GPUs for AI Training & Inference in 2026

Compact AI models and multimodal inference pipelines are commonly deployed on smaller GPUs optimized for power efficiency rather than on rack-scale clusters. Development of AI Applications

[Contact Us](#)

### Custom Built AI Server Racks , Build Your Own AI

Our AI server racks are purpose-built for high-density AI servers, GPUs, and high-performance computing environments.

[Contact Us](#)



### Choosing the Right AI Server Rack for Your Needs

Choosing the Right Rack for Your Needs Before selecting a server rack, it's crucial to assess your organization's specific requirements. Consider factors like the weight

[Contact Us](#)



## Vera CPU Rack for AI Factories , NVIDIA Data Center

Purpose-built for reinforcement learning and agentic AI, NVIDIA Vera CPU Rack delivers dense, energy-efficient rack-scale infrastructure for AI factories.

[Contact Us](#)



## NVIDIA GPU Servers for AI, Inference, Training, HPC

Powered by the latest NVIDIA Blackwell architecture, AMD EPYC or Intel Xeons processors, our GPU optimized AI servers deliver unbeatable performance and

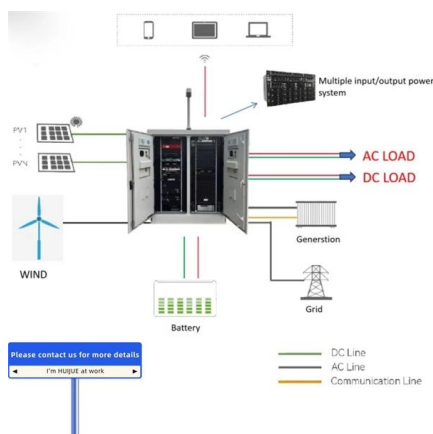
[Contact Us](#)

## Data centers evolve to meet AI's massive power needs

All of these AI functions require significant increases in power to enable them. Delivering this much power and ensuring that AI can reach its full potential requires reimagining how the IT server rack is



[Contact Us](#)



## PowerEdge AI Servers with GPU Acceleration , Dell USA

XE-Series servers are purpose-built for accelerated computing--AI training, HPC, and large-model inference. They prioritize GPU density, bandwidth, power, and

[Contact Us](#)



## AI Server Racks , High-Performance Rack Cabinets for Advanced

AI server racks are engineered for high-performance computing environments with elevated power and thermal demands. Designed to support advanced compute hardware and scalable infrastructure

[Contact Us](#)



### Server Rack vs. Chassis: What's the Difference, and

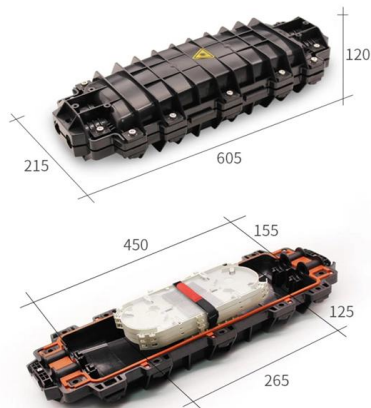
If a server rack is a device that can house multiple servers, and a server chassis can also sometimes house multiple servers, it can start to feel

[Contact Us](#)

### AI Server Racks: AI Infrastructure Server Solutions

This is where AI server racks come in, providing the foundation for scalable, high-performance AI environments. This guide will move beyond the

[Contact Us](#)



### 2025 OCP Summit Highlights Data Center Efficiency

2025 OCP Summit--AI Infrastructure Buildout Consisted of Three Pillars: AI Servers Rack, Power & Cooling, and Networking The Event - Major

[Contact Us](#)



## AI Server Market Size And Share , Industry Report, 2033

The global AI server market size was estimated at USD 131.65 billion in 2025 and is projected to reach USD 598.12 billion by 2033, growing at a CAGR of 21.2% from

[Contact Us](#)



## Nvidia Corp's GB300 platform to lead AI servers for this

Nvidia Corp's GB300 platform is expected to account for 70 to 80 percent of global artificial intelligence (AI) server rack shipments this year, while

[Contact Us](#)



## Dell nears deal to sell \$5 billion in AI servers to xAI,

Dell Technologies is nearing a deal worth more than \$5 billion to provide Elon Musk's xAI with servers optimized for artificial intelligence work,

[Contact Us](#)



## AI Data Center Server Rack: Design, Power, and

Explore AI data center server rack design, covering GPU density, power architecture, cooling systems, networking, and future infrastructure trends.

[Contact Us](#)



## Housing GPU servers for AI workloads



Whether you need air-cooled GPU servers with moderate IT loads or HPC AI clusters based on water-cooled reference designs in the megawatt range, we

[Contact Us](#)



### **Supermicro AS-4124GS-TNR 4-Bay 2.5" NVMe 4U Rack Server**

Configure your Supermicro AS-4124GS-TNR 4U rack server with AMD EPYC, NVMe storage, and up to 8TB DDR4. 8x GPU slots. 90-day warranty. Ships in 3-5 days.

[Contact Us](#)



### **AI Rackmount Servers**

Tired of AI servers that cost more than your car and come preloaded with GPUs you can't upgrade, don't need, or can't even buy? Meet the RAMstack, a new kind of rackmount AI server--designed for

[Contact Us](#)



### **Artificial Intelligence (AI) Servers - Intel**

Artificial Intelligence (AI) Servers Learn about AI server components, key considerations to help inform AI server design and the potential benefits unlocked

[Contact Us](#)

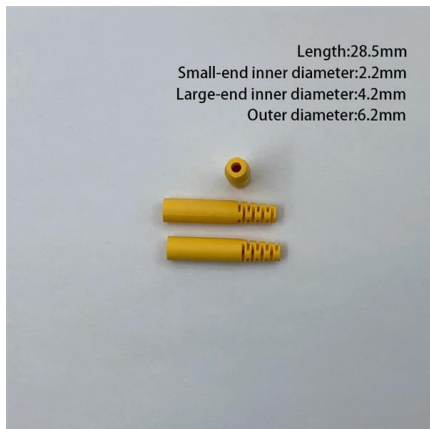




### Dedicated Server - Arma 3

About steamCMD utility: if you are using it on a dedicated host to install and update Arma 3 dedicated server, it is a good practice to create a

[Contact Us](#)



### Compute Solutions , HPE

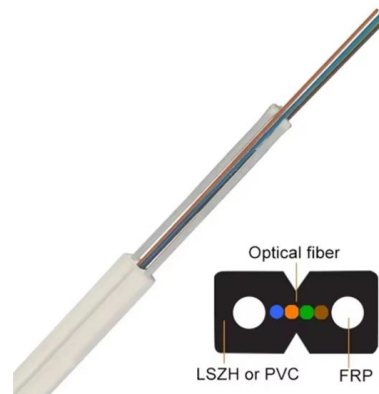
Explore HPE Compute solutions for AI and hybrid IT with built-in security, automation, and energy efficiency to optimize workloads and

[Contact Us](#)

### SPECIFYING THE CORRECT CABINET FOR AI COMPUTE

By leveraging pre-configured AI racks, data center operators can accelerate time to market for AI applications, reducing labor costs and ensuring infrastructure readiness in record time.

[Contact Us](#)



### Colocation 2026 for AI Workloads, Edge & Hybrid Tech

Our infrastructure supports high-performance bare metal server deployments, including bare metal dedicated server and bare metal dedicated

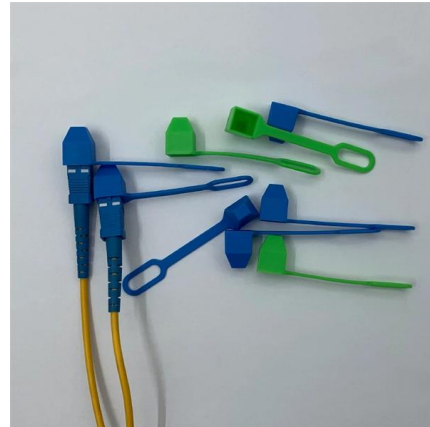
[Contact Us](#)



## ThinkSystem Servers: AI-Ready Rack, Tower & Edge

Discover Lenovo servers for SMBs and enterprise workloads. Choose AI-ready, scalable, and secure ThinkSystem servers for AI, cloud, and edge workloads

[Contact Us](#)



## AI Server Racks: AI Infrastructure Server Solutions

AI server racks are not simply standard enclosures with more powerful servers. They are purpose-built systems designed to manage the unique

[Contact Us](#)

## Contact Us

---

For datasheets, pricing, or custom fiber access solutions, please visit:  
<https://frindel.es>