

# Where does the ground wire of the distribution box lead

Rear of the optical fiber distribution box





## Overview

---

26 mm<sup>2</sup> (10 AWG) ground wire must be used, and in all other markets a 6 mm<sup>2</sup> must be used. Grounding of the units: Attach a ground wire from one of the threaded studs (A) at the bottom of the housing, to the mounting plate (B). The correct connection method of Distribution box grounding wire mainly includes the following steps: 1. System grounding Ground or earth provides a common return path for electric current in an electric circuit. It is created by connecting the neutral point of an installation to the general mass of the earth or a chassis.



## Where does the ground wire of the distribution box lead

---

### 7. Ground, earth and electrical safety

Earth is a direct physical connection to the Earth. This is usually done by driving a copper rod (earth stake) into the ground. But, depending on age and location of the system this can also be a copper

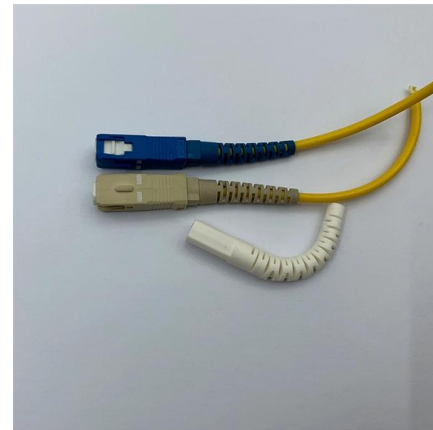
[Contact Us](#)



### How to determine the size, installation method and

(1) Wiring method of distribution box 1)  
Generally, the incoming line of power distribution box adopts five wire system, that is, a, B and C three-way phase line

[Contact Us](#)



### How to Wire a Single Phase Breaker Box: Step-by-Step

Learn how to wire a single phase breaker box with a wiring diagram. Understand the different components and connections involved in setting up a safe and efficient

[Contact Us](#)

### The installation requirements for the distribution box

Key Takeaways Choose the right box based on environment (indoor/outdoor), load capacity, and durability. Check for proper IP/NEMA ratings

[Contact Us](#)



### Electrical Box Ground Wire Connectors & Connections

How to make proper & safe electrical ground wiring connections in the box: This article describes options for connecting a metal electrical box to the grounding conductor & connecting the grounding

[Contact Us](#)



### DISTRIBUTION BOX

Each DISTRIBUTION BOX and controller must be grounded. On the US market, a 5.26 mm<sup>2</sup> (10 AWG) ground wire must be used, and in all other markets a 6 mm<sup>2</sup> must be used.

[Contact Us](#)



### directory-list-2.4.txt/directory-list-2.4.txt at main

Customer stories Events & webinars Ebooks & reports Business insights GitHub Skills

[Contact Us](#)

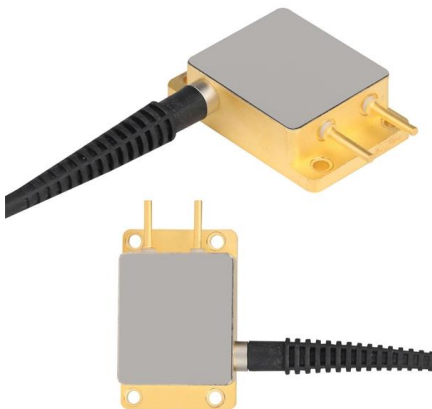




## Electrical Panel Grounding and Bonding

The topic of grounding and bonding is a never ending area of confusion. The difference between a service panel and a sub panel is also muddy in many

[Contact Us](#)



## Earthing for a Distribution or Transmission Line

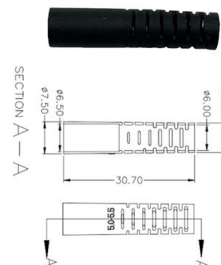
For distribution lines, wire earthing is used by low resistance wire known as the earth wire. This earth wire is connected to Earth Electrodes, buried

[Contact Us](#)

## Where should I connect ground in my new service panel?

While traditionally this has been connected to 2 ground

[Contact Us](#)



## The Complete Guide to Distribution Box: Installation, Types & More

Blog The Complete Guide to Distribution Box: Installation, Types & More By Admin Aug 2, 2025 No Comments # distribution box Introduction Electrical systems power our homes, offices, and

[Contact Us](#)





## How To Run A Ground Wire To An Electrical Panel Box

Your service panel's ground wire prevents a line fault from becoming a shocking experience. By shunting excess line voltage back to the panel's neutral pole, the ground current

[Contact Us](#)



## Electrical Outlet Ground Wire Connections

Ground wire connections at receptacles: how to connect the ground wires at an electrical receptacle: here we give the proper ground wire connections when hooking up an electrical receptacle (wall plug)

[Contact Us](#)

## How to Ground Electrical Wires

Recent codes, however, call for grounding electrical wires in fixtures. To do so, connect the fixture's ground lead (usually a stranded wire) to the strap

[Contact Us](#)



## Size determination, installation method and wiring mode

The distribution box is the central hub of the home circuit and the general control of our daily power consumption. It is an indispensable electrical equipment. If there

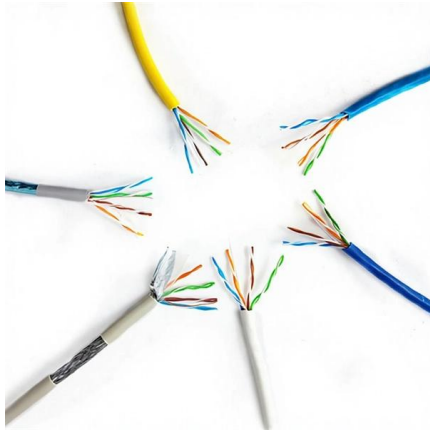
[Contact Us](#)



## Where Does the Ground Wire Go in an Electrical System?

For metal electrical boxes, which are conductive and therefore require grounding, the incoming ground wire must be connected to the box first to ensure the enclosure is bonded to earth.

[Contact Us](#)



## Grounding System Installation Standards for Distribution Boxes and

Grounding isn't just about connecting a wire to a rod in the dirt--it's a sophisticated balancing act for your entire electrical system. Remember those electrons they taught us about in science class?

[Contact Us](#)



## How To Wire A Distribution Board (DB Board): A Step-By-Step Guide

A distribution board (DB board), also known as a fuse box or breaker panel, is essential for managing electrical circuits in a building. It distributes electrical power from the main supply to

[Contact Us](#)



## Understanding Circuit Breaker Wiring Configurations in

Correct wiring methods for circuit breakers within distribution boxes are fundamental to ensuring electrical safety and compliance with established codes.

[Contact Us](#)



## Method for making the ground wire of a household distribution box

Connect one end of the insulated copper wire to the grounding grid and lead the other end into the distribution box and connect it to the ground bus bar of the distribution box.

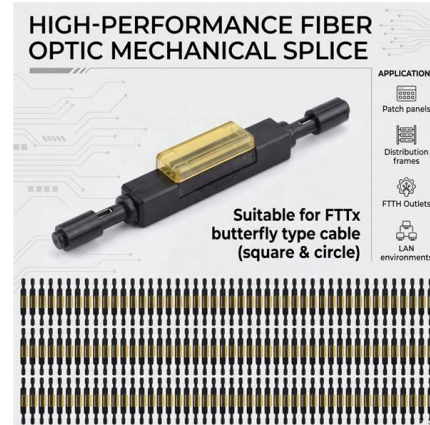
[Contact Us](#)



## ITPro Today, Network Computing, IoT World Today combine

ITPro Today, Network Computing and IoT World Today have combined with TechTarget . The page you are looking for may no longer exist.

[Contact Us](#)



## The Importance of Ground Wires in the Breaker Box: A

The ground wire is typically connected to the metal frame of the breaker box and to various metal components throughout the building, such as water pipes or

[Contact Us](#)



## Correct Connection Method Of Grounding Wire Of

Open the distribution box and find the position marked with the grounding plate or PE letter. This position is the connection point of the grounding

[Contact Us](#)



## A guide to understanding home breaker box wiring

Learn how to read and understand a home breaker box wiring diagram to ensure the safety and functionality of your electrical system.

[Contact Us](#)



## Understanding Circuit Breaker Wiring Configurations in

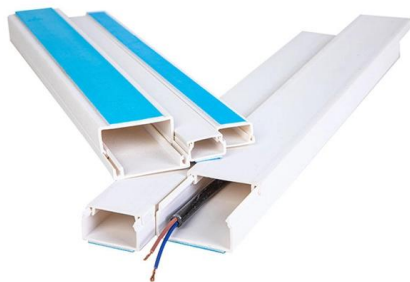
Protective Earth (PE) Wire Connection: For circuit breakers with residual current protection (RCDs such as 1P+N with RCD or 2P with RCD), a

[Contact Us](#)

## Distribution Box Wiring Steps

?Wiring and Binding? ?Wiring Direction?: Wiring between the main circuit breaker and each branch circuit breaker in the box generally goes on the left, and

[Contact Us](#)



## How Electricity Gets from the Meter to Your Breaker Box (Keeping the

Learn how electricity travels from your home's meter to the breaker box. Discover the role of L1 and L2 buses, the Neutral bus, Ground bus, and ground bonding in your home's electrical system in this

[Contact Us](#)



## How to Wire a Home Distribution Box

How to Wire a Home Distribution Box - Step-by-Step , Distribution DB box wiring diagram  
Welcome to our channel! In this video, we'll walk you through

[Contact Us](#)



## Contact Us

---

For datasheets, pricing, or custom fiber access solutions, please visit:  
<https://frindel.es>