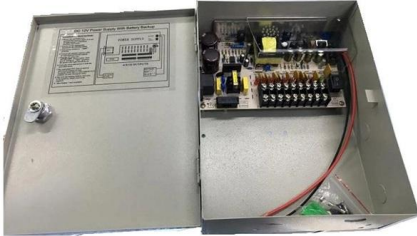


Where are the small busbar terminals located





Where are the small busbar terminals located



What is a Busbar? The Key to DIY Solar Power

What is the Purpose of a Busbar? A busbar is used for electrical connections, ensuring power is efficiently distributed to various devices or circuits

[Contact Us](#)

A Guide to Electrical Busbars: Common Uses & Design

Get answers for advantages and common uses for electric busbars, types of busbars, and how simulation tools complement the design process.

[Contact Us](#)



Busbar, Bus Stab, Breaker Slot and Circuit Space in a

What are Busbars, Bus Stabs, Circuit Spaces, Breaker Slots, Neutral Terminals, and Ground Terminals in an Electrical Panel or Load Center? Electric panels and load

[Contact Us](#)

What Is a Busbar: Types, Applications, & Simulation

What is an Electrical Busbar: Types, Applications, & Simulation Busbars are metallic strips or bars that function as conductors, centralizing the

[Contact Us](#)



Understanding Busbar Function and Purpose

The busbar may also feature tin or silver plating to prevent oxidation, and/or a copper coating to improve its temperature threshold. They may be laminated (rigid) or

[Contact Us](#)

Bus Bar : Different Types, Advantages & Disadvantages

The single type is used in small substations where the process of the continuous power supply is not required. An additional type is used in large substations to

[Contact Us](#)



What is Busbar?

Busbars allow new circuits to branch off anywhere along the route of the busway rather than branching the main supply at one location. What is the

[Contact Us](#)





Busbars

Safe and economic connection ABB busbar systems enable safe and easy cross-wiring of miniature circuit breakers, residual current devices and other Modular DIN-Rail products. The following points

[Contact Us](#)



What Is A Busbar - Power Distribution In Electrical

A busbar is a rigid conductor, typically made of copper or aluminum, that serves as a common connection point for multiple circuits within electrical enclosures. It

[Contact Us](#)



Busbar Arrangements in Substations , Terminal and Through

It may be located at the end of the main line or it may be situated at a point away from main line route. In the latter case, a tapping is taken from the main line to supply to the sub-station.

[Contact Us](#)



The Ultimate Guide to Electrical Busbars [May 2026]

Discover everything about electrical busbars--types, materials, advantages, and applications. Simplify power distribution with efficient, safe, and

[Contact Us](#)





Automotive Busbars & Terminal Blocks

Busbars and terminal blocks both provide convenient connection points for power distribution within a vehicle or piece of equipment. A busbar lets you feed multiple

[Contact Us](#)



What is a Bus Bar and Its Importance in Electrical Systems

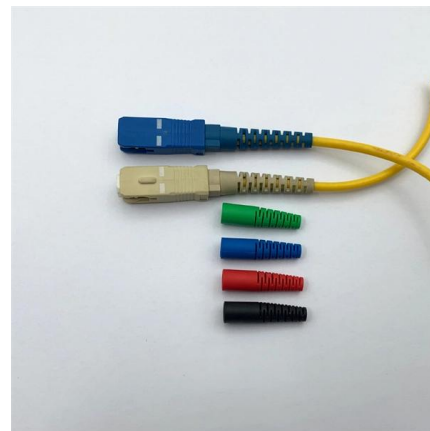
When it comes to understanding the intricate world of electrical systems, the term "bus bar" often emerges. But what exactly is a bus bar, and why is it so crucial in electrical setups? In this article, we

[Contact Us](#)

What is the function of the busbar in a switchgear, and

The role of busbars in switchgear: Busbars are conductors in switchgear that collect, distribute, and transmit electrical energy. They connect the power source

[Contact Us](#)



How Do Busbars Work And What Are They Used For?

Rather than branching the main supply at one location, busbars allow new circuits to branch off anywhere along the route of the busway. A busbar is

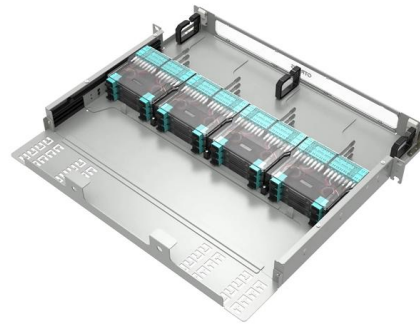
[Contact Us](#)



Busbars Basics

In all but the smallest boats and cars, it is impractical to connect all wires for each load directly to the battery terminal or to the battery switch

[Contact Us](#)



Busbar

The busbar's material composition and cross-sectional size determine the maximum current it can safely carry. Busbars can have a cross-sectional area of as little as

[Contact Us](#)

What is the function of the busbar in a switchgear, and

Busbars are conductors in switchgear that collect, distribute, and transmit electrical energy. They connect the power source (such as the output terminal of a

[Contact Us](#)



Busbar Basics: Understanding the Fundamentals of Electrical

Understanding the basics of busbars is vital for ensuring safe and efficient electrical power distribution. By grasping the core principles of busbar design, material selection, and maintenance, professionals

[Contact Us](#)

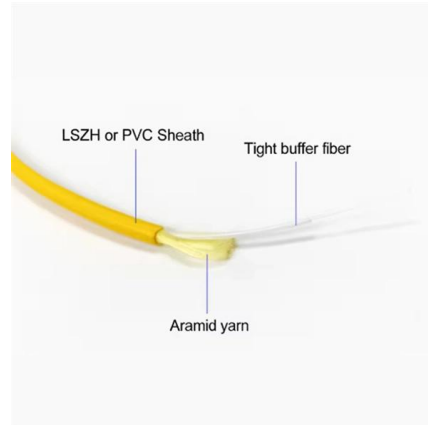




Step-by-Step Busbar Installation Guide , Artizono

Imagine transforming a chaotic web of electrical connections into a streamlined, efficient powerhouse. Busbars are the unsung heroes of electrical

[Contact Us](#)



Understand the role of Busbar Terminals in electrical installation

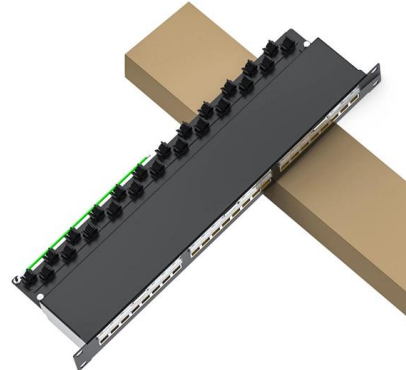
Busbar Terminals are designed to withstand high currents while maintaining low resistance, thereby increasing the efficiency of power transfer. The role of Busbar Terminals The main role of Busbar

[Contact Us](#)

Switchboard Busbar Guide (2025): Design & Standards

In short, the switchboard busbar is where mechanical design, materials science, and electrical codes meet. What is a switchboard busbar (and

[Contact Us](#)



The Essential Guide to Electrical Terminal Bus Bars

Provide an in-depth look at the role, types, and applications of electrical terminal bus bars in power distribution systems. Learn how these vital

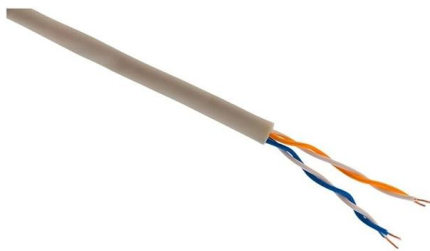
[Contact Us](#)



Everything You Need to Know About Automotive Electrical Bus Bars

Discover everything you need to know about automotive electrical bus bars. Learn about their design, types, materials, applications, advantages, and future innovations.

[Contact Us](#)



Automotive Busbars & Terminal Blocks

Our automotive busbars and terminal blocks allow you to consolidate wiring and distribute electrical power in a cost-effective manner. Busbars and terminal blocks

[Contact Us](#)

Bus Bars vs. Terminal Blocks: The Ultimate Guide to

Comprehensive guide comparing bus bars and terminal blocks for power distribution. Learn about their features, applications, pros and cons to

[Contact Us](#)



Improvements to Blue Sea Systems' 150A Busbars

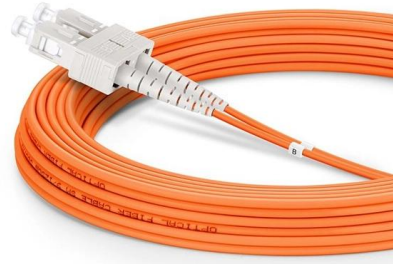
Copper busbars safely carry more current than brass busbars. Tin plating reduces the corrosion for maximum conductivity and resistance to corrosion. Stainless steel screw terminals with captive lock

[Contact Us](#)



The use of busbar for switchgear goes back to the dawn of electricity generation and is very common in both residential load centers of 200A and less and in industrial motor control center (MCC)

[Contact Us](#)



Contact Us

For datasheets, pricing, or custom fiber access solutions, please visit:
<https://frindel.es>