

What type of cable tray should be selected during cable tray construction

Rear of the optical fiber distribution box





Overview

The cable tray types to choose from are ladder, ventilated trough, or solid bottom. What are the reasons for selecting a specific type of cable tray?

The engineer or designer should select the type of cable tray that has the features which best serve the project's requirements. Cable tray (or cable ladder) systems are a popular alternative to electrical conduit systems, as they have an outstanding record for dependable service, design flexibility and cost savings in commercial and industrial applications. maintain spacing or to keep cables in place when the tray is ect the minimum bend ra-dius for cables as they exit the bottom of the cable tray. The answer is simple: different cable characteristics and installation environments demand different tray designs.

Environmental Conditions: Assess indoor or outdoor usage, exposure to moisture, chemicals, or extreme temperatures. It offers cable tray systems fabricated from corrosion-resistant steel, stainless steel and aluminium alloys along with corrosion-resistant finishes, including.



What type of cable tray should be selected during cable tray construction



Cable Tray Type Selection

What type of cable tray should be used for the main runs of a cable tray wiring system? The cable tray types to choose from are ladder, ventilated trough, or solid bottom.

[Contact Us](#)

Type of Cable Tray

Introduction: Today cable trays have become a necessary part of industrial and commercial construction by offering quick, economical and flexible solutions to these problems. Cable trays are capable of

[Contact Us](#)



7 Types of Cable Trays: How to Choose the Right One

Selecting the correct cable tray type is not arbitrary--it depends on a combination of cable characteristics, environmental conditions, and installation

[Contact Us](#)



The Ultimate Guide to Selecting the Right Cable Tray for Your Project

By understanding the types of cable trays available, assessing your project's specific needs, and considering factors like environmental conditions, load capacity, and material selection,



Cable Tray Technical Guide A practical guide to product selection and

A practical guide to product selection and installation This guide for engineers and installers has been developed by ABB as a practical reference regarding cable tray characteristics, installation, and

[Contact Us](#)



Cable Tray Type Selection

Cable Tray Selection Process Steps:- Select Material and Finish Select the Tray Load Class Select the Tray Type Select the Tray Size Select the Fittings Consider Deflection 1 Select Material and Finish

[Contact Us](#)



Cable Tray Types and Sizes

Choosing the right cable tray type is essential and is usually specified by an engineer or project designer. The selection depends on several factors such as the number

[Contact Us](#)





Best Practices for Installing Cables in Trays

Quick Installation Checklist (Key Steps) Cable tray cable installation generally follows these steps: Inspect cables before

[Contact Us](#)



A Guide to Selecting Cable Trays for Engineering Design

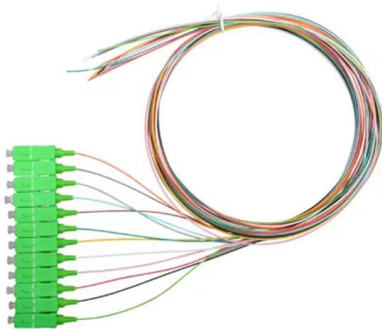
Learn about the essential factors when selecting cable trays for engineering design. Understand load calculations, safety factors, material choice,

[Contact Us](#)

The Comprehensive Guide to Cable Tray Systems:

Master cable tray systems with our expert guide covering structural engineering, material selection, and NEC compliance to ensure safe, efficient,

[Contact Us](#)



Ultimate Guide to Cable Tray Selection - Types,

Selecting the right cable tray is essential for safety, efficiency, and compliance with industry standards. This guide will help you choose the best

[Contact Us](#)



Cable Tray, Cable Bus, Wire Mesh Cable Trays , MP

MP Husky manufacturers Cable Tray Systems, Cable Bus System, Wire Mesh/Wire,Cable Tray, & Cable Management Systems. Our cable support

[Contact Us](#)



Best Practice Guide to Cable Ladder and Cable Tray Systems

This guide covers cable ladder systems, cable tray systems, channel support systems and associated supports intended for the support and accommodation of cables and possibly other electrical

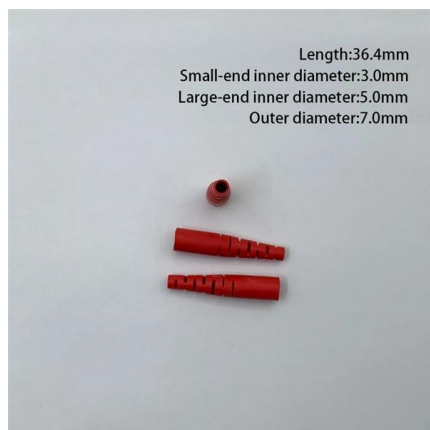
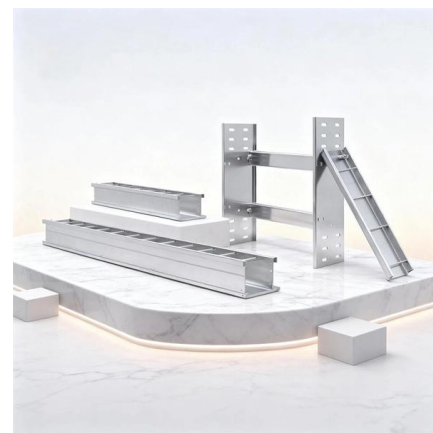
[Contact Us](#)



Best Practices for Cable Tray Design

Conclusion Following best practices in cable tray design is essential to ensuring the efficiency, safety, and durability of electrical and network systems.

[Contact Us](#)



Cable Tray Type Selection

The width or height of a cable tray is a function of the number, size, spacing and weight of the cables in the tray. Available nominal widths are 6, 9, 12, 18, 24, 30, 36 and 42 inches.

[Contact Us](#)



HOW TO CHOOSE THE RIGHT CABLE TRAY

A cable tray is a system used to support and route cables and wiring in an industrial environment. Cable trays are used in various installations, including commercial construction, data centers, computer

[Contact Us](#)



A Guide to Installing and Supporting Electrical Cable Trays

A professional guide to installing electrical cable tray systems per NEC Article 392. Covers support, securing cables, and fill calculations.

[Contact Us](#)

Cable Tray Systems: The Ultimate Guide to Choosing the Best Options

Cable tray systems are essential components in electrical and communication installations, ensuring safety and organization. With various options available in the market, it's

[Contact Us](#)



How to Choose the Right Cable Tray for Your Project?

Learn how to select the best cable tray for your project with insights on load capacity, corrosion resistance, customization, and common applications.

[Contact Us](#)



Cable Tray SHIB NAL

Cable trays are not raceways, but they are treated as a structural component of a facility's electrical system. Cable trays are a part of a planned cable management system to support, route, protect and

[Contact Us](#)



Best Practice Guide to Cable Ladder and Cable Tray Systems

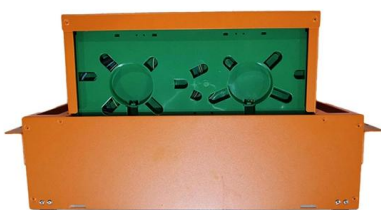
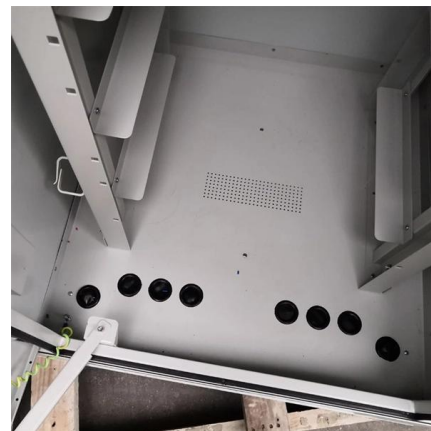
Cables should be fastened to the cable ladder and/or cable tray using cable cleats or cable ties to prevent movement of the cables under normal use and during fault conditions (Figures 25a and 25b).

[Contact Us](#)

Cable Tray Installation

Learn everything about cable tray installation with our complete guide. Discover types, steps, and safety tips for efficient electrical cable management.

[Contact Us](#)



B-Line series Cable Tray Design Considerations

Our wind certification report provides you with list of acceptable B-Line series cable tray supports, fittings and covers based off of the environmental conditions, cable loading, and type of cable tray in your

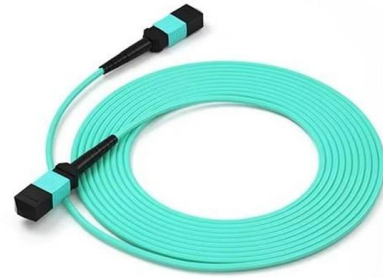
[Contact Us](#)



100+ Essential Questions Answered About Cable Trays:

How do aluminum alloy cable trays differ from steel cable trays in selection? Aluminum alloy trays are more suitable for areas that require reduced

[Contact Us](#)



Cable Tray Selection Process

The greatest rung spacing compatible with an adequate cable bearing surface area should be selected. Heavy power cables often require greater cable bearing area due to the possibility of creep in the

[Contact Us](#)

Cable Tray Technical Guide A practical guide to product selection and

The choice of method should be discussed with a local inspector. The best decision may be to extend only the cables, creating a discontinuity in the cable tray.

[Contact Us](#)



Ultimate Guide to Choosing the Best Cable Tray

The best cable tray prioritizes access, like ladder trays with open rungs or mesh trays with flexible routing. Plan for maintenance pathways during

[Contact Us](#)

What are Cable Trays & Different Types of



Cable Trays

Learn what cable trays are & explore the various types, benefits, and purposes. Gain insights into how electrical cable trays can revolutionize your

[Contact Us](#)



Contact Us

For datasheets, pricing, or custom fiber access solutions, please visit:
<https://frindel.es>