

What to check in a secondary distribution box





Overview

Primary distribution systems consist of feeders that deliver power from distribution substations to distribution transformers. Let's make a hypothesis: a newly built residential area introduces a 10kV incoming line and builds a distribution room. It improves safety by enabling protection against overload and short circuits, and it improves reliability by keeping circuits separated and clearly.



What to check in a secondary distribution box



Grid Cable for marine and offshore applications

electrical distribution box preventive maintenance check list

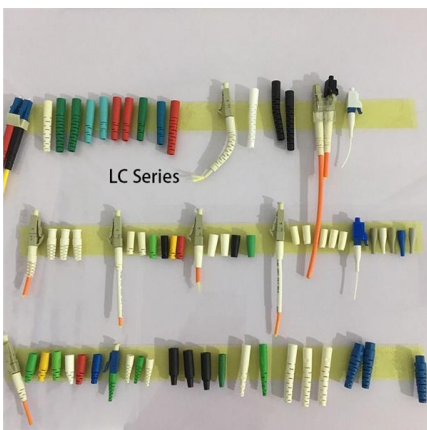
Inspect for any physical damage to the enclosure. Ensure that all labels and warning signs are legible. Examine for any signs of overheating or arcing. Verify that the box is securely mounted and that

[Contact Us](#)

Distribution Box: Types and Functions , Axis-Electricals

A distribution box houses all the contact breakers, earth leakage units, doorbells, and timers. The electrical power supply comes from the network to the building

[Contact Us](#)



Distribution box

Yet the distribution box is a highly complex component that not only ensures safe power distribution, but is also responsible for protection in an emergency. In this article, you will learn everything you need

[Contact Us](#)

Primary and secondary power distribution systems (layouts explained)

You might feel a little nervous about opening your distribution box, but you can do it safely if you follow some simple steps. Let's walk through what you need to know before you start.



Power Distribution Box Essentials: Functions, Types

Every distribution box is specially equipped to handle unique tasks, power clean-up and in an efficient manner in a wide range of settings. 5)

[Contact Us](#)

The difference between the first, second, and third levels of

In addition to installing leakage protectors in the final switch box, a first level leakage protector should also be installed in the upper level distribution box or main distribution box, forming

[Contact Us](#)



What Is an Electrical Distribution Box? A Complete Guide

An electrical distribution box is a centralized unit responsible for distributing electrical power across multiple circuits within various

[Contact Us](#)





How To Read The Distribution Box System Diagram

Check electrical parameters?: First understand the basic electrical parameters of Distribution box so that you can have a general understanding of

[Contact Us](#)



The Ultimate Guide to Distribution Box Types

Discover the key types of distribution boxes with NUOMAK's comprehensive guide. Learn about Main Distribution Boards (MDB), Consumer Units, Transfer

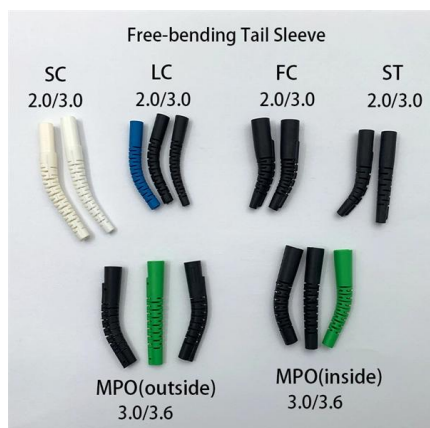
[Contact Us](#)



The difference between the first, second, and third levels of

Secondary distribution box: distribution boxes for each floor or building (according to actual conditions); Third level distribution box: refers to the final junction box of each electrical

[Contact Us](#)



Distribution Box Guide: Types, Components & Solutions

Understand distribution boxes (DB boxes) in 5 minutes. Learn about types, components, functions, and uses. Find the perfect DB box for your needs.

[Contact Us](#)

A Definitive Guide To Distribution Boxes



The distribution box acts as the center of power distribution, distributing electricity to all connected devices. A distribution box, also known as a distribution board, panel board, breaker

[Contact Us](#)



Power Distribution Boxes Explained Simply

Discover the essentials of a Power Distribution Box--how it works, key types, benefits, and tips to ensure safe, efficient electrical power management.

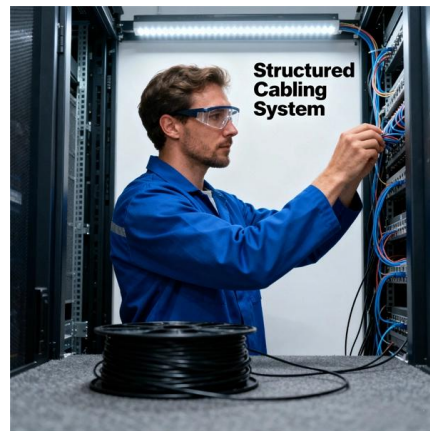
[Contact Us](#)



Understanding Distribution Boxes: Your Guide to Power

Weatherproof Distribution Boxes These serve specific outdoor purposes, with rain, dust, and extreme temperatures sealed shut, protecting any

[Contact Us](#)



The Complete Guide to Distribution Box: Installation, Types & More

What's the difference between a distribution box and a sub-panel? A distribution box typically refers to the main electrical panel that receives power from the utility service. A sub-panel is

[Contact Us](#)





How To Install A Second Circuit Breaker Box From The

When you run out of space in your electrical service panel (also called a breaker box), you have two choices: have a professional upgrade the service

[Contact Us](#)



Distribution Boxes: Types and Functions

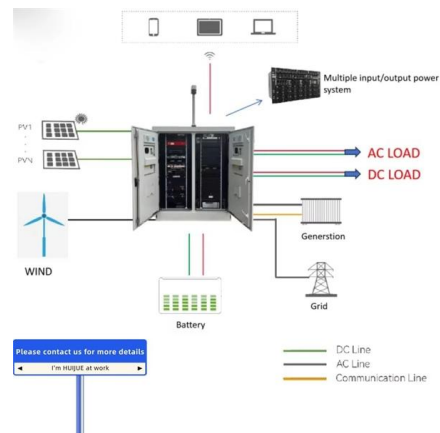
Learn what an electrical distribution box (DB/distribution board) is, its main components (MCB/RCCB/RCBO, SPD, busbar) and common types.

[Contact Us](#)

Eventbrite

Find tickets to your next unforgettable experience. Browse concerts, workshops, yoga classes, charity events, food and music festivals, and more things to do.

[Contact Us](#)



Distribution Box Wiring Steps

?Preparation phase? ?Box installation?: Make sure that Distribution box has been correctly installed and fixed. ?Material preparation?: Prepare the required cir

[Contact Us](#)



The Complete Guide to Septic Tank Distribution Boxes ,

The distribution box serves to evenly divide and distribute the effluent exiting the septic tank to the entire drain field. When wastewater enters the box

[Contact Us](#)



The Meaning and Function of Primary, Secondary, and Tertiary

Secondary distribution boxes, also known as sub-distribution boxes, generally serve specific power supply areas. These boxes have inner and outer doors, powder-coated exteriors, and

[Contact Us](#)

Power Distribution Boxes Explained Simply

Learn what a power distribution box is, how it works, key components, types, and why it's vital for safe and efficient electrical systems.

[Contact Us](#)



How to Install a Cable Distribution Box Safely and

In modern electrical systems, cable distribution boxes (also known as electrical distribution boxes or distribution boxes) play a crucial role as the key

[Contact Us](#)



A Definitive Guide To Distribution Boxes

All of the contact breakers, earth leakage units, doorbells, and timers are housed in a distribution box. The main feeding cable transports electrical power from the network to the building.

[Contact Us](#)



Three-Tier Power Distribution System in a Newly Constructed

Learn about the three-tier power distribution system (main secondary tertiary distribution boards) in a new residential area including their roles connections and safety measures for 0.4kV power supply.

[Contact Us](#)

Secondary Distribution Box

The Secondary Distribution Box (SDB) receives power from Main Power Distribution box via an extender cable and provides a central power distribution to feed

[Contact Us](#)



Contact Us

For datasheets, pricing, or custom fiber access solutions, please visit:
<https://frindel.es>