

What switch should I use for a 1000m fiber optic connection

Pre-Terminated Patch Panel

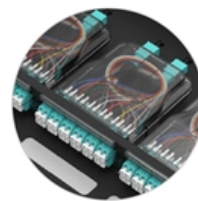
-  Multi-application support
-  Flexible configuration
-  Modular design



Multi-functional Sliding Patch Box, Modular



Modular Sliding Patch Box



Sliding Patch Box, Modular





Overview

For most users seeking scalable, future-proof infrastructure, a managed fiber optic switch offering Layer 3 routing, PoE+ support (if needed), and redundant power supplies delivers optimal performance. A switch is an integral part of a network which establishes connectivity among various connected devices on the network such as computers, phones, cameras, and so on. If you have multiple Ethernet switches that need to be connected over long distances, fiber is obviously a preferred choice. Users may need to use different SFP modules, such as 1000Base-T, 1000Base-SX, 1000Base-LX. That's where 1000BASESX SFP becomes a common "default choice" for short-range optical connectivity. I'm planning a large network deployment and I need a 10Gb-Fibre switch to connect the distribution switches in a Metropolitan Area Network to the Datacenter. I need a high speed backbone from each building to the Datacenter through this Core switch but I haven't had any luck finding the right.



What switch should I use for a 1000m fiber optic connection

MTP MPO SC-Type Fiber Adapter



Unlocking the Potential of a Fiber Optic Switch in Modern Networks

A: Fiber optic switches can be connected to ethernet networks using media converters that allow ethernet-to-fiber connections. This will enable networks to take advantage of fiber optics'

[Contact Us](#)

WORLD WIDE WEB JOURNAL Home

O'Reilly & Associates, Inc. 103A Morris St.
Sebastopol, CA United States

[Contact Us](#)



Set Up a Fiber-Optic Network in Your Home or Office

Learn about the various fiber-optic components used for running fiber in your house, office, or between buildings. Find out how to use fiber optics for

[Contact Us](#)

Connecting Two Cisco Switches Using a fiber cable.

I need to connect 4 Floor Building with 4 Cisco 2960 - 48 ports switch each other and it needs to be through a fiber. So all PCs connected to each

[Contact Us](#)



8 Port Fiber Switch 10/100/1000M RJ45 and 2-port

This switch provides 8-port 10/100/1000M RJ45 and 2-port 1000M SFP fiber ports. Users may need to use different SFP modules, such as 1000Base-T, 1000Base

[Contact Us](#)



The ULTIMATE Guide to Fiber Optic Home Networking

Do you have a need to extend your home network around your property? Maybe you want reliable internet in the shed you turned into a work

[Contact Us](#)



Gigabit/Hundred Gigabit/Core/PoE/Fiber Switch

The switch is the core equipment for monitoring network transmission. There are many critical technical parameters to consider when selecting

[Contact Us](#)



How to Connect Multiple Ethernet Switches



Using Fiber Optic Cables

To connect multiple Ethernet switches, the best way is to use a multi-strand fiber cable. The 4-strand pre-terminated fiber optic cable consists of four individual strands or fibers of glass or

[Contact Us](#)



Amazon : Fiber Switches

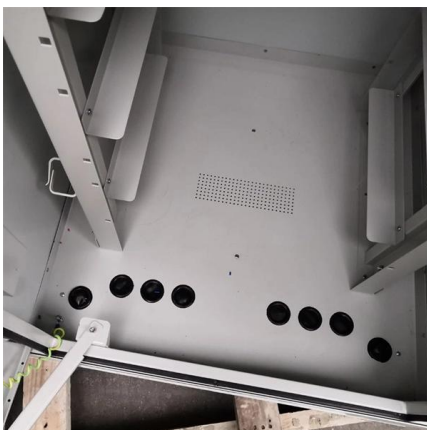
Discover fiber switches designed for reliable network connectivity. Browse 10G, 2.5G, and gigabit options to expand your bandwidth.

[Contact Us](#)

Choosing the Right PM Fiber Switch for Your Optical Network: A

This article provides a comprehensive guide to choosing the right PM fiber switch, covering key factors to consider and common applications. Key Factors to Consider When selecting

[Contact Us](#)



8 or 10 port managed Ethernet to fiber optic switches,

The EL-1000-4GM is a versatile and robust managed Ethernet switch designed for star structure, ring, or meshed network configurations. Offering flexibility, it is

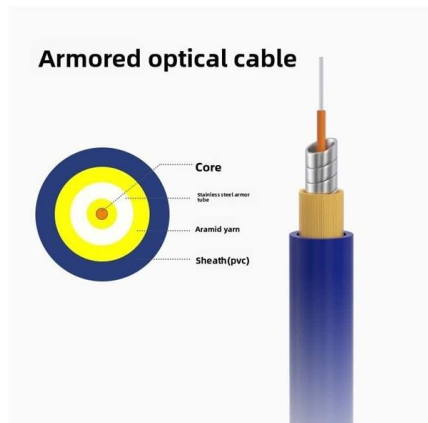
[Contact Us](#)



Solved: Choosing a Fibre Switch

Solved: I'm planning a large network deployment and I need a 10Gb-Fibre switch to connect the distribution switches in a Metropolitan Area Network to the Datacenter.

[Contact Us](#)



Estink SFP Ethernet Fiber Optic Switch, 1000m Ethernet

Product description SFP Ethernet Fiber Optic Switch, 1000m Ethernet Fiber Optic Transceiver, 4 Optical Ports 2 Electrical Ports, 120km, with LED

[Contact Us](#)

A Comprehensive Guide to Choosing Your Fiber

Choosing the Right Fiber Network Switch, Consider factors like type, number of ports, speed, compatibility, scalability, PoE, and form factor.

[Contact Us](#)



A Complete Buying Guide to Fiber Optic Switches

A Guide to Buying Fiber Optic Switches A switch is an integral part of a network which establishes connectivity among various connected devices on the network

[Contact Us](#)



1000BASESX SFP: How to Select the Right Optical Module

A complete 1000BASESX SFP buying guide -- understand specs, compatibility, fiber requirement, and installation tips to ensure seamless Gigabit connections.

[Contact Us](#)



Multi Ports Fiber Optic Network Switch 1000 Base

OFS-GSF1DT16-20 series is a Layer 2 + Optical Ethernet switch with 1*1000Mbps

[Contact Us](#)



24-Port Fiber Optic SFP Managed Switch with 10G Uplink

24 port Fiber Optic SFP Managed Switch allows you finish fiber connectivity that is with different bandwidth requirements conveniently and cost savings.

[Contact Us](#)



Complete Guide to Fiber Optic Home Networking

Complete Guide to Fiber Optic Home Networking
Fiber optic networks are the backbone of the internet's future. Unlike traditional copper-based

[Contact Us](#)

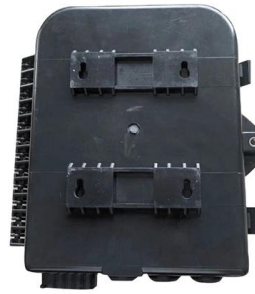




Connecting Network Switches via Fiber

Terminate your fiber optic cabling with two LC-style connectors or purchase a pre-terminated fiber optic cable with two LC-style connectors. When connecting

[Contact Us](#)



What does the 1000M on a network switch mean?

I thought the 1000M ment that it was capable of Gigabit speed but it isn't, I noticed then that it stated 10/100Mbps. What does this 1000M mean?

[Contact Us](#)

networking

Does anyone have any recommendations on transceivers? Even if I can connect one end of the fiber run directly to the Dell switch, the other end of the cable in building A will still need a

[Contact Us](#)



10-100-1000_Ethernet_Card_U-017

Introduction The 10/100/1000 Ethernet Fiber Link Card system converts a copper 10Base-T or 100/1000Base-TX to a 1000Base-SX/LX fiber optic transmission signal of either multimode or single

[Contact Us](#)





How Are Network Switch Connect To Fiber

This article aims to provide a comprehensive understanding of how network switches are connected to fiber optic cables, the types of fiber optic

[Contact Us](#)



Gigabit Ethernet

1000BASE-T-capable network interface card made by Intel, which connects to a computer via PCI-X There are five physical layer standards for Gigabit Ethernet

[Contact Us](#)

Understanding SFP Switches: The Essential Guide to Fiber and

A: An SFP switch accepts Small Form-Factor Pluggable (SFP) modules, enabling fiber optic and Ethernet connections and offering better flexibility and scalability than traditional wired

[Contact Us](#)



Instantly Upgrade Your Network with the Best Fiber

To sustain high-speed connectivity, a fiber switch should have the capability for Gigabit Ethernet support. This will keep the data transfer rates

[Contact Us](#)



How to Choose the Best Fiber Optic Switch for Your Network Setup

Learn what to look for in a fiber optic switch, from types and specs to pricing and top models. Make an informed buying decision with this complete guide.

[Contact Us](#)



Contact Us

For datasheets, pricing, or custom fiber access solutions, please visit:
<https://frindel.es>