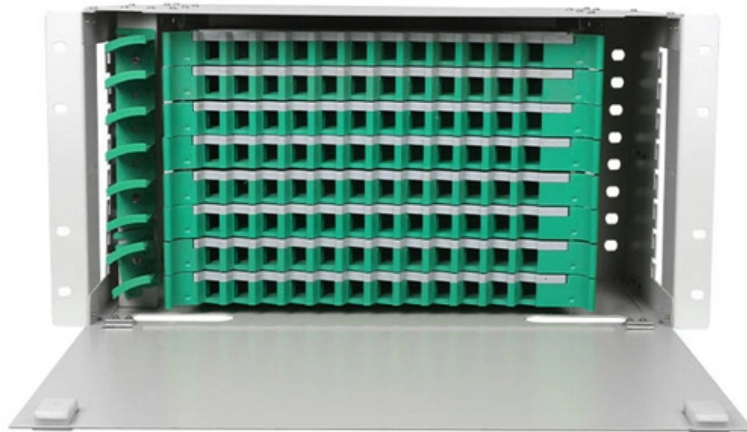


# **What specifications should be used for the guide rails in the distribution box**





## Overview

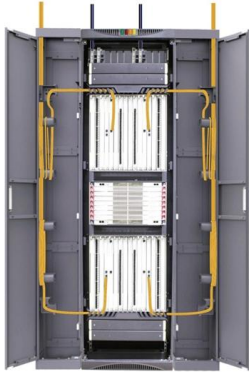
---

Ensure safe placement: install in dry, accessible areas with good ventilation and at appropriate height (typically ~1. Choose the right box based on environment (indoor/outdoor), load capacity, and durability. The installation requirements and specifications of Distribution box involve many aspects, including site selection, fixing method, wiring specifications and safety protection. The ABB MNS® low voltage distribution board and power cabinet are a new set of modular and multipurpose low-voltage products.



## What specifications should be used for the guide rails in the distrib

---



### What Are Distribution Boxes and Their Functions in

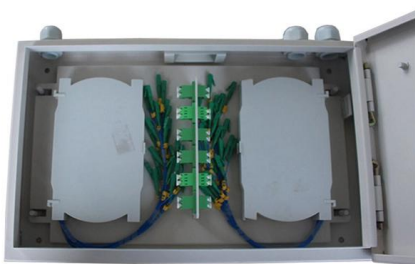
Understand the role of distribution boxes in fiber optics. Learn about their components, types, and functions in protecting and managing fiber optic

[Contact Us](#)

### A Definitive Guide To Distribution Boxes

Power distribution boxes come in a variety of forms, sizes, and constructions, and they may be customized. Input and output voltages are two variables that might be used. Additionally, the

[Contact Us](#)



### Guide Rail Installation Instructions

To install these rail options, use the instructions above to mount your guide rail, and then follow the instructions that came with your miscellaneous component.

[Contact Us](#)

### Understanding Distribution Boxes:A Comprehensive Guide

A distribution boxes is an essential device that manages the safe and efficient flow of electrical power throughout different areas of a building or facility.



### **How to Improve the Installation Quality of Distribution Boxes**

Learn key methods to enhance distribution box installation quality, including location, height, wiring, and safety compliance.

[Contact Us](#)



### **A comprehensive understanding of distribution box**

? Introduction Distribution boxes are at the heart of safe and organized electrical systems--whether in residential, commercial, or industrial settings. But

[Contact Us](#)



### **What Is the Guide Rail in an Elevator? A Complete Guide**

Elevator Guide Rail Sizes and Specifications While the classification of elevator guide rails helps us understand their structural differences and

[Contact Us](#)



### Technical Specifications for Distribution Boxes and Switch Boxes

The guide rails must be sturdy, and the structure of power distribution cabinets shall be complete and firm. Meanwhile, two mounting lugs shall be welded at the bottom left and top right of the back of non

[Contact Us](#)



### ITPro Today, Network Computing, IoT World Today combine with

ITPro Today, Network Computing and IoT World Today have combined with TechTarget . The page you are looking for may no longer exist.

[Contact Us](#)

### "Guidelines for Household Distribution Box Specifications and

In lighting distribution boxes, separate bus bars should be designated for the neutral line (N) and the protective earth line (PE). These lines should connect on the bus bar without splicing and

[Contact Us](#)



### InforEuro, the exchange rate of the Euro currency

InforEuro helps you convert euro in other currencies. The European Commission's official monthly accounting rates for the euro, its conversion rate to other

[Contact Us](#)



## A Comprehensive Guide to DIN Rail Systems and

Discover everything you need to know about DIN rail systems and enclosures. Learn about the different types of DIN rails, their importance in

[Contact Us](#)



## What are Elevator Guide Rails? Types & Selection Guide

Conclusion Elevator guide rails are more than just simple steel tracks--they are the foundation of safe, reliable vertical transportation. Understanding the different types of elevator rails,

[Contact Us](#)

## How to Install a Cable Distribution Box Safely and

Understanding Cable Distribution Boxes A cable distribution box is an electrical device used to collect, distribute, and protect electrical power. It is

[Contact Us](#)



## DIN Rails

C-section rails commonly come in four popular sizes, corresponding to their depth in mm: C20, C30, C40 and C50. The 15mm wide mini top hat rail is

[Contact Us](#)



## DIN Rails -The Ultimate Guide of All the Essential

This is the ultimate guide to DIN rails, providing a comprehensive overview of the basics, types, sizes, installation, and applications of DIN rails. Whether you're a

[Contact Us](#)



### Installation Best Practices for Guide Rails

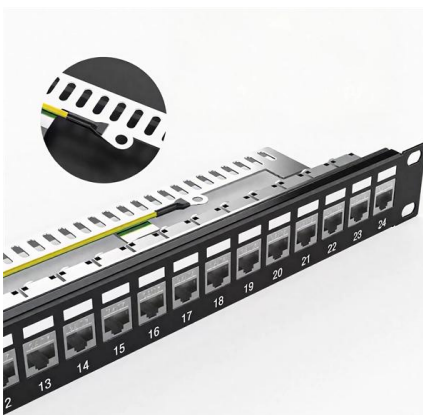
Before beginning the installation, it is essential to thoroughly understand the specific requirements and specifications of the guide rail system.

[Contact Us](#)

### Requirements And Specifications For Installation Of

The installation requirements and specifications of Distribution box involve many aspects, including site selection, fixing method, wiring specifications

[Contact Us](#)



### Distribution Box: Types and Functions , Axis-Electricals

A distribution box ensures that electrical supply is distributed in the building, also known as a distribution board, panel board, breaker panel, or electric panel.

[Contact Us](#)

### The Complete Guide to Distribution Box:



### Installation, Types & More

Different applications require different types of distribution boxes. Selecting the right type ensures optimal performance and compliance with relevant standards. Home distribution boxes

[Contact Us](#)



### Installing the Guide Rails and Chassis

Installing the Adjustable Guide Rails and Chassis Adjustable guide rails are for cabinets where the distance between the front and rear mounting bars is 543.5-848.5 mm (21.40-33.41 in.).

[Contact Us](#)



### MNS® Low Voltage Distribution Board and Power Cabinet

Check the specifications and models of the equipment and its attachments and spare parts against the packing list. They should conform to the requirements of the design drawings.

[Contact Us](#)



### Distribution Box and Selection Guide

Distribution Box Selection Guide This guide provides information on how to select the appropriate Distribution Box for Electric project. If you have any

[Contact Us](#)

02

High Quality Material



High hardness to resist external impact, Good Shaping Performance Good Look and Anti-rust





## Size determination, installation method and wiring mode

The distribution box is the central hub of the home circuit and the general control of our daily power consumption. It is an indispensable electrical equipment. If there

[Contact Us](#)



## IEC Standard for Power Distribution Board Design and

You can refer to our guide on Differential Relay Setting Calculation for Transformer to understand the importance of protective relays in such systems.

[Contact Us](#)



## How to select guide rail for your elevator correctly?

Hollow guide--it is made of steel plate through cold bending (or rolling) into a hollow t-shaped elevator to reuse the guide rail, which can reduce the weight and cost

[Contact Us](#)

## SUPPORTS

### DIN RAIL INSTALLATION



## The Complete Guide to Distribution Box: Installation, Types & More

Distribution boxes should receive visual inspections monthly and comprehensive professional inspections annually. High-usage commercial and industrial installations may require

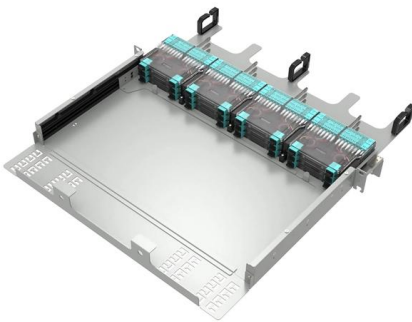
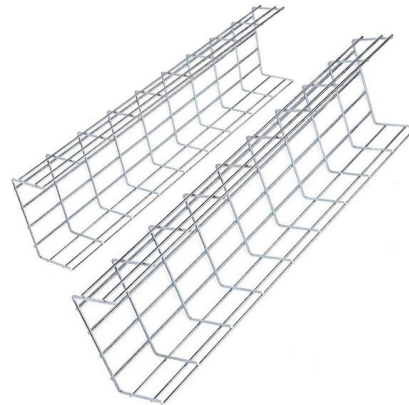
[Contact Us](#)



## Distribution Boxes: Types and Functions

Learn what an electrical distribution box (DB/distribution board) is, its main components (MCB/RCCB/RCBO, SPD, busbar) and common types.

[Contact Us](#)



### Distribution Box - Astryd Power Pvt. Ltd.

This specification covers the design, manufacture, testing at works, and supply of Distribution Boxes made out of CRCA MS (cold-rolled close annealed mild steel). These distribution boxes are used for

[Contact Us](#)

## Contact Us

---

For datasheets, pricing, or custom fiber access solutions, please visit:  
<https://frindel.es>