

# **What is the use of the fiber optic sensor in the Redmi K30S**





## What is the use of the fiber optic sensor in the Redmi K30S

### SUPPORTS DIN RAIL INSTALLATION



### Fiber-optic sensor

A fiber-optic sensor is a sensor that uses optical fiber either as the sensing element ("intrinsic sensors"), or as a means of relaying signals from a remote sensor to the electronics that process the signals

[Contact Us](#)

### Fiber Sensors

When a sensing object passing between the emitter and receiver fibers interrupts the emitted light, it reduces the amount of light that enters the receiver. This reduction

[Contact Us](#)



### Fiber Optic Sensor : Types, Working, Interfacing & Its Applications

Fiber Optic Sensor Block Diagram  
Types of Fiber Optic Sensors  
Based on Sensing Location  
Fiber Optic Sensor Interfacing with Microcontroller  
Advantages  
Disadvantages  
Applications  
There are different types of fiber optic sensors are available based on different factors like sensing location, operating principle, and application. See more on [watelectronics ScienceDirect](#)

### Fiber Optic Sensor - an overview , ScienceDirect Topics

Fiber optic sensors are increasingly utilized in structural health monitoring in civil, aerospace, and energy applications. The recent surge in



commercial demonstrations of these sensor systems both

[Contact Us](#)

### **Xiaomi Redmi K90: specs, benchmarks, and user reviews**

Xiaomi Redmi K90 - full specifications, battery, camera, display, and performance tests. User and expert reviews.

[Contact Us](#)



### **Xiaomi Redmi K30S**

Specifications of the Xiaomi Redmi K30S. Dimensions: 76.4 x 165.1 x 9.33 mm, Weight: 216 g, SoC: Qualcomm Snapdragon 865 (SM8250), CPU: 1x 2.84 GHz Cortex-A77, 3x 2.

[Contact Us](#)

### **Xiaomi Redmi K30S**

What is the display resolution of Xiaomi Redmi K30S? The Xiaomi Redmi K30S display resolution is 1080x2400 (FHD+) Pixel.

[Contact Us](#)



### **What is a fibre optic sensor? , Sensor Basics: Principle**

This site provides information useful for people involved in manufacturing to select sensors. A fibre optic sensor is a photoelectric sensor with optical fibre connected

[Contact Us](#)



### **Redmi K20 Pro , The Alpha Flagship @INR24,999**

The Redmi K20 Pro is the Alpha Flagship you have been waiting for. The Redmi K20 Pro justifies the flagship title with its unmatched specs. Armoured with

[Contact Us](#)



### **Redmi K30**

Redmi K30 is a line of Android-based smartphones manufactured by Xiaomi and marketed under its Redmi sub-brand. There are two main models, the K30

[Contact Us](#)



### **What is a fibre optic sensor? , Sensor Basics: Principle-based Guide**

A fibre optic sensor is a photoelectric sensor with optical fibre connected to its light source. It allows flexible selection of installation location and can be used in various environments.

[Contact Us](#)



### **What Are Fiber Optic Sensors and How to**



### Choose the

This article introduces optical fiber sensors, covering their definition, principle, types, applications, selection specs and future trends.

[Contact Us](#)

### Fiber Optic Sensors and Their Applications

Numerous researches have been conducted in past decades using fiber optic sensors with different techniques. Intensity, phase, and wavelength based fiber optic sensors are the most widely used

[Contact Us](#)



### Xiaomi Redmi K30S

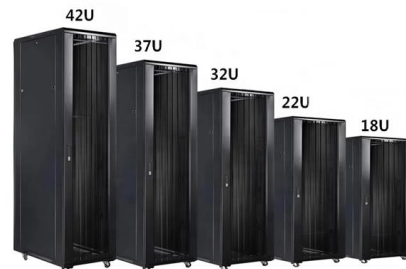
What is the display resolution of Xiaomi Redmi K30S? The Xiaomi Redmi K30S display resolution is 1080 x 2400 pixels.

[Contact Us](#)

### Xiaomi Redmi K80: specs, benchmarks, and user reviews

Xiaomi Redmi K80 - full specifications, battery, camera, display, and performance tests. User and expert reviews.

[Contact Us](#)

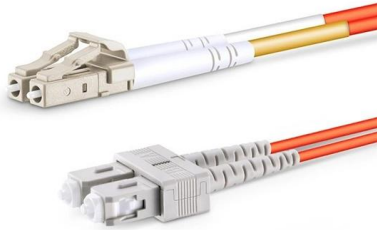




## What is a Fiber Optic Sensor?

Learn all about the principles, structures, and features of eight sensor types according to their detection principles. The fiber optic sensor has an optical fiber

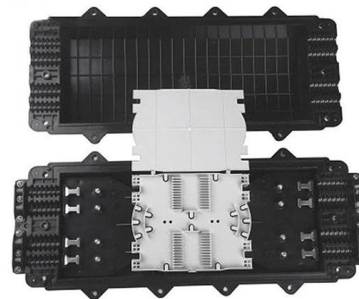
[Contact Us](#)



## Xiaomi Redmi K Pad: specs, benchmarks, and user reviews

Xiaomi Redmi K Pad - full specifications, battery, camera, display, and performance tests. User and expert reviews.

[Contact Us](#)



## Xiaomi Redmi K30S

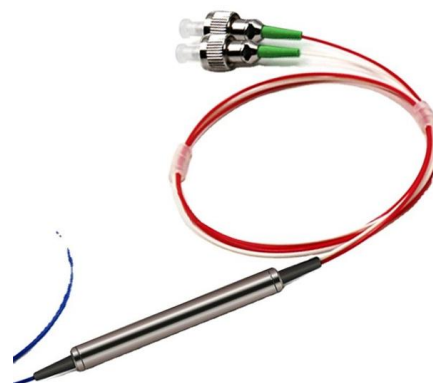
Xiaomi Redmi K30S smartphone. Released . It have a IPS LCD screen of 6.67 Inch size. RAM and Qualcomm Snapdragon 865 (SM8250) are getting power from the

[Contact Us](#)

## Xiaomi Redmi K30 Pro

Xiaomi Redmi K30 Pro Android smartphone. Announced Mar 2020. Features 6.67? display, Snapdragon 865 5G chipset, 4700 mAh battery, 256 GB storage, 12 GB

[Contact Us](#)





## Introduction to Fiber Optic Sensors and their Types

Article provides different types of Fiber optic sensors and applications. A fiber optic sensor is a sensor that uses optical fibers for sensing the element (remote sensing).

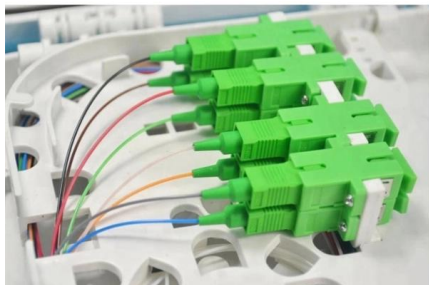
[Contact Us](#)



## REDMI Note 15 Pro+ 5G Review

After 3 weeks of daily usage, we share our thoughts on the REDMI Note 15 Pro+ 5G, including its familiar design, its specs, and pricing.

[Contact Us](#)



## What is a fibre optic sensor?

A fibre optic sensor is a photoelectric sensor with optical fibre connected to its light source. It allows flexible selection of installation location and can be used in

[Contact Us](#)

## Xiaomi Redmi K80 Ultra: specs, benchmarks, and user reviews

Xiaomi Redmi K80 Ultra - full specifications, battery, camera, display, and performance tests. User and expert reviews.

[Contact Us](#)





## Understanding Fiber Optic's Role in Photoelectric Sensing

Photoelectric sensors and fiber optic sensors are very similar in a lot of ways, but which one is superior in function and durability, and under what

[Contact Us](#)

## What is a fibre optic sensor? , Sensor Basics: Principle

This site provides information useful for people involved in manufacturing to select sensors. A fibre optic sensor is a photoelectric sensor with optical fibre connected to its light source. It allows flexible

[Contact Us](#)



## Introduction to Fiber Optic Sensing

Distributed and quasi-distributed fiber optic sensors are systems that connect opto-electronic interrogators to an optical fiber (or cable), converting the fiber to an array of distributed sensors. The

[Contact Us](#)

## Contact Us

---

For datasheets, pricing, or custom fiber access solutions, please visit:  
<https://frindel.es>