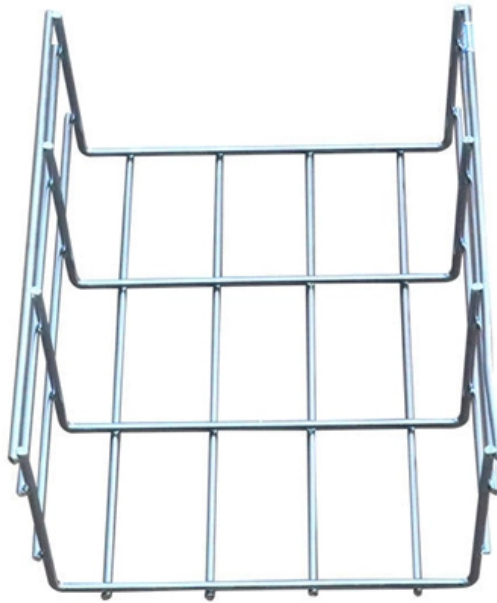


What is the structure of relay protection principle





What is the structure of relay protection principle



Electrical Relay , Tutorials on Electronics , Next Electronics

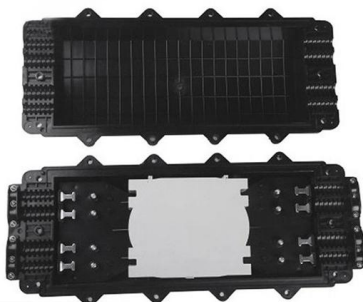
Consequently, understanding the operational principles of relays is essential for engineers and technologists working with complex electrical systems. In summary, electrical relays serve a dual

[Contact Us](#)

Using Protective Relay For Fighting Against Faults

But when fault or undesirable condition arrives Protective Relay must be operated and function correctly. A Power System consists of various electrical

[Contact Us](#)



Types of Electrical Protection Relays or Protective Relays

Operating Principles: Protective relays operate by detecting abnormal signals, with specific pickup and reset levels to start or stop their action.

[Contact Us](#)

Primary and Backup Protection Working Principle

Backup protection concept Refer above scheme, here the relays C, D, G and H are primary relays while A, B, I and J are the backup relays. Normally



Basic Theories of Power System Relay Protection

Relay protection with good performance should meet the requirements of reliability, selectivity, speed and sensitivity. In order to meet the requirements of a complex network, relay

[Contact Us](#)



Relays Part 4: The Protective Relay Basic Theory

The protective relays operate under two principles electromagnetic induction and electromagnetic attraction. The types of protective relays that exist are overcurrent,

[Contact Us](#)



Section2_EP3.QXD

Protection relays are used in power systems to maximize continuity of supply and are found in both small and large power systems from generation, through transmission, distribution and utilization of

[Contact Us](#)





doi: 10.1007/978-3-319-20919-7_3

Appropriate relays are modeled using their generic description. The protective equipment (CBs, VTs, CTs, and relays) are connected together to enable closed-loop simulation, i.e., the trip signals of the

[Contact Us](#)



Relays Part 4: The Protective Relay Basic Theory

Protective relays play a role in detecting unexpected conditions that occur in the electric system circuits. The relay circuit above can be divided into three important parts that are discussed

[Contact Us](#)

Basic protection relay knowledge

Protection is needed to detect electrical faults and abnormal operating conditions. Protection is also needed for protecting people and property around the power network. The protected zone is the part

[Contact Us](#)



What is a Protective Relay? Principle, Advantages,

Protective Relay Principle A protective relay is an electrical component that is designed to trip a circuit breaker when a fault is encountered or

[Contact Us](#)

Analysis of the structure and principle of



relay protection device

Analysis of the structure and principle of relay protection device. Relay protection generally consists of three parts: measurement part, logic part and execution part.

[Contact Us](#)



Protection Relay:Types, wiring diagram and working principle.

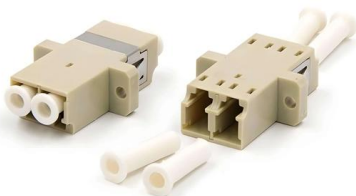
Protection relay is an electromechanical monitoring safety device which senses fault and provide trip signal to the breaker as per set value in LT and HT panel. The Protection devices is over current

[Contact Us](#)

Protective Relay: Working, Types, and Applications

The working of a protective relay is based on continuous monitoring of electrical quantities such as current, voltage, frequency, and power. A typical

[Contact Us](#)



Electromagnetic Relay Types and Working Principle

In this article, you'll learn about electromagnetic relay construction, its working/operating principle, and different types such as No-Volt relay, Overload

[Contact Us](#)



What is Protection Relay?

A protection relay is a crucial component of electrical systems that safeguard infrastructure, employees, and equipment from electric problems and

[Contact Us](#)



Protective Relay : Working, Types, Circuit & Its

The protective relay diagram is shown below. Protection Relay Protective Relay Working Principle A protective relay is used to protect the device once the fault is

[Contact Us](#)

doi: 10.1007/978-3-319-20919-7_3

Perform power system simulations of selected faults and observe how a given protection principle (overcurrent, impedance, and differential) works. Set the relays for a given power system. Verify by

[Contact Us](#)



Power System Protective Relays: Principles & Practices

Protective relays and devices have been developed over 100 years ago to provide "lastline"of defense for the electrical systems. They are intended to quickly identify a fault and isolate it so the balance of

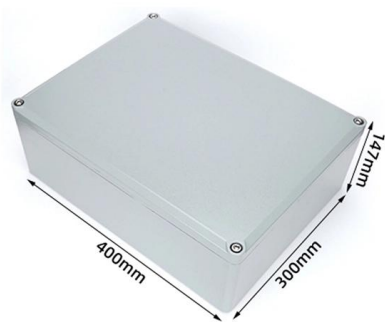
[Contact Us](#)



Principles of Protective Relaying , PDF , Electric Power

This document discusses protective relaying principles and philosophies. It begins by defining protective relaying as the branch of electric power engineering

[Contact Us](#)



Protective Relay : Working, Types, Circuit & Its

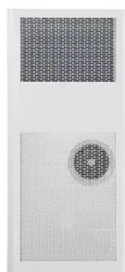
A protective relay is used to protect the device once the fault is detected within a system. Once the fault is detected, the fault location is found and then provides

[Contact Us](#)

Protective Relay Basics

Traditionally, protective relays were electromechanical devices that utilized induction disk, coils, contacts, and solenoid elements to determine protective characteristics.

[Contact Us](#)



Protective relay

Distance relays, also known as impedance relay, differ in principle from other forms of protection in that their performance is not governed by the magnitude of the

[Contact Us](#)



Protective

Most of the relays in service on power system today operate on the principle of electromagnetic attraction or electromagnetic induction. Regardless of the principle involved, relays are generally

[Contact Us](#)



Relay Principle and Function

Discover the principles and functions of relays, their working mechanisms, types, structures, and key roles in electrical and electronic

[Contact Us](#)

The basics of power system protection that every

Introduction to relay protection Protection is the branch of electric power engineering concerned with the principles of design and operation of

[Contact Us](#)



Contact Us

For datasheets, pricing, or custom fiber access solutions, please visit:
<https://frindel.es>