

What is the core module of a switch





Overview

The switching engine is the core component of the switch, responsible for data forwarding and routing. It processes data packets from various ports and forwards them to the correct output ports based on destination address information. Engineered to aggregate massive volumes of data from distribution switches, it provides ultra-low latency and maximum throughput to ensure uninterrupted routing and packet.



What is the core module of a switch



What is a Core Switch?

A modular core switch allows for flexible expansion and customization through the addition of line cards and other modules. A fixed-configuration core switch, on the other hand, has a

[Contact Us](#)

Network Switch Components and Technical Analysis

The switching engine is the core component of the switch, responsible for data forwarding and routing. It processes data packets from various ports and forwards them to the correct output ports based on

[Contact Us](#)



Understanding Core Switch: What It Is and How to

A core switch is not merely a type of switch but rather denotes the switch that operates at the core layer (the network's backbone). Positioned at the

[Contact Us](#)

What Is a Core Switch in Networking?

Unlike access switches, which connect directly to end-user devices, the core switch focuses on aggregating and routing traffic between other

[Contact Us](#)



What Is the Core Switch?

The core switch is the central, high-capacity switching point within a network, responsible for forwarding data between different parts of the network and often connecting to multiple

[Contact Us](#)



USDD Isn't Just Growing It's Redefining What a Stablecoin Can Be In

But as a core financial primitive for DeFi. Final Perspective This isn't just growth it's momentum backed by fundamentals. USDD brings together:

[Contact Us](#)



What Is a Core Switch?

A core switch is the backbone of a large-scale network, designed to handle massive volumes of traffic with ultra-low latency and maximum reliability. Sitting at the top of the hierarchical model, core

[Contact Us](#)





Core Switch vs Normal Switch: Key Differences Explained

What Are Core and Normal Switches? Core Switch A core switch is the backbone of a network, managing high-speed data traffic between multiple

[Contact Us](#)



Understanding the Core Switch: Key Differences and Uses

Explore the core switch's role as the backbone of your network. Discover key differences, uses, and insights into layer 3 core switch technology.

[Contact Us](#)

What Is a Core Switch in Networking?

What Is a Core Switch in Networking? Understanding the Backbone of Your Network A core switch in networking serves as the high-capacity

[Contact Us](#)



What Is a Core Switch? Network Backbone Architecture Guide

Discover what a core switch does in a 3-tier network model. Learn about ASIC routing, collapsed core vs dedicated core topologies, and SMB sizing guides.

[Contact Us](#)



Understanding the Core Switch: Key Differences and Uses

A core switch is a high-capacity network switch that functions as a network's backbone or core layer. It's responsible for accurately routing

[Contact Us](#)



Introducing the Az PowerShell module , Microsoft Learn

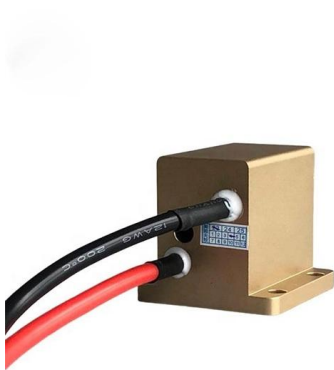
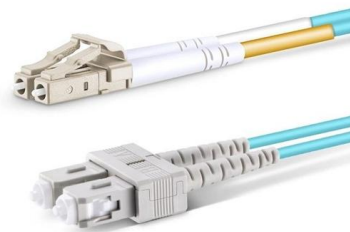
The Az PowerShell module is a set of cmdlets for managing Azure resources directly from PowerShell. PowerShell provides powerful features for automation that can be leveraged for

[Contact Us](#)

News

Module Redundancy: Ensuring Reliability
Redundancy is key to maintaining a robust network. Network devices, including core switches, should possess redundancy

[Contact Us](#)



Core Switch Explained: Key Functions and Benefits

Discover what a Core Switch is, its pivotal role in network architecture, and how it boosts performance and reliability in your data infrastructure.

[Contact Us](#)



What Is a Core Switch? Network Backbone Architecture Guide

The Core Layer (The Backbone) Sitting at the top of the hierarchy, the core layer acts as the high-speed backbone. It connects multiple distribution layer switches and provides the fastest

[Contact Us](#)



Core Switches: The Pillar of Network Infrastructure

Core switches, as the name suggests, form the core or central part of a network, connecting several other switches in a network infrastructure. These

[Contact Us](#)

Core Switch vs. Distribution Switch vs. Access Switch

A core switch is the primary switch installed at the backbone of a layered or hierarchical network. These data switches are responsible for routing and data

[Contact Us](#)



What is a Network Switch? , Explained Working, Types

Distribution Switch: A distribution switch is strategically positioned between the core and access layers in a hierarchical network design. It aggregates traffic from

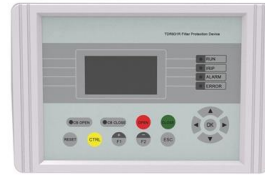
[Contact Us](#)



What Is a Core Switch in a Network?

Define the core switch--the central, high-speed backbone required for aggregating and routing massive volumes of enterprise network traffic.

[Contact Us](#)



What is a Core Switch , Functions and Difference over Normal Switch

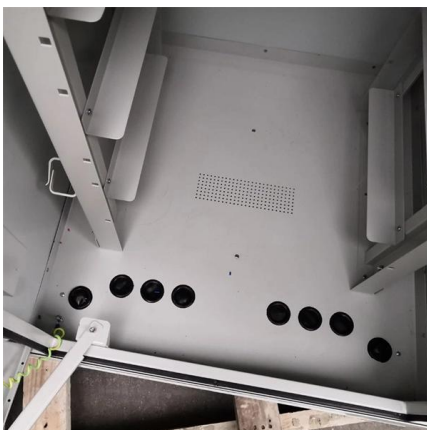
What is a core switch and how it works? This article builds the basics of this kind of switch for the ones who don't know anything about it. What is a Core Switch? It is a powerful

[Contact Us](#)

Network Switch Components and Technical Analysis

Control Module The control module manages various switch components, such as the interface modules and the switching matrix. It also includes the operating system and management software of the

[Contact Us](#)



What is Core Switch and How to Choose?

Discover what a core switch is and learn how to choose the right one for your network. Explore key features in selecting a core layer switch. Make

[Contact Us](#)



What is a Core Switch?

A core switch is a crucial component of a network infrastructure that serves as the backbone of a network. It's a high-performance switch that provides high-speed

[Contact Us](#)



Differences Between the Core Switch and Normal

A core switch is not a type of switch, but a switch placed at the core layer (the backbone of the network). Generally, large-scale enterprise networks

[Contact Us](#)

What is a Core Switch?

Spread the loveA core switch is a crucial component of a network infrastructure that serves as the backbone of a network. It's a high-performance switch that provides

[Contact Us](#)



Core Switch vs Normal Switch: Key Differences Explained

A core switch is the backbone of a network, managing high-speed data traffic between multiple segments. It's designed to handle significant

[Contact Us](#)





What Is a Core Switch in a Network?

The core switch functions as the central point of the entire network, forming the high-speed backbone for the organization's data infrastructure. Its primary purpose is to provide an

[Contact Us](#)



Understanding Core Switch: What It Is and How to

What is a Core Switch? A core switch is not merely a type of switch but rather denotes the switch that operates at the core layer (the network's backbone).

[Contact Us](#)

Contact Us

For datasheets, pricing, or custom fiber access solutions, please visit:
<https://frindel.es>