

# **What is the best height for a mesh cable tray support**





## What is the best height for a mesh cable tray support

---



### **Cable Tray Systems: Requirements and Best Practices**

Comprehensive guide to cable tray systems requirements: tray types, materials, loading, supports, bonding, routing, and best practices for safe electrical cable management.

[Contact Us](#)

### **7 Types of Cable Trays: How to Choose the Right One**

Cable tray systems are engineered support structures designed to route, support, and protect insulated electrical cables used for power distribution,

[Contact Us](#)



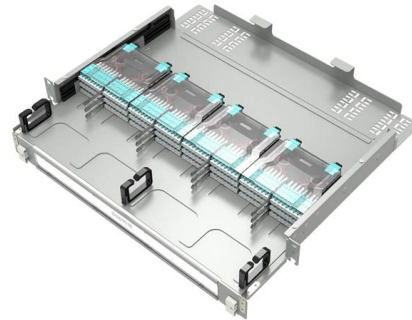
### **Best Practice Guide to Cable Ladder and Cable Tray**

Cable ladder and cable tray systems The following recommendations are intended to be a practical guide to ensure the safe and proper installation of

[Contact Us](#)

### **Best Practice Guide to Cable Ladder and Cable Tray Systems**

Cable ladder systems and cable tray systems are designed for use as supports for cables and not as enclosures giving full mechanical protection. They are not intended to be used as ladders, walk ways



### Best Practice Guide to Cable Ladder and Cable Tray Systems

Cable ladders and cable trays should be mounted far enough off the floor or roof to allow the cables to exit through the bottom of the cable ladder or cable tray.

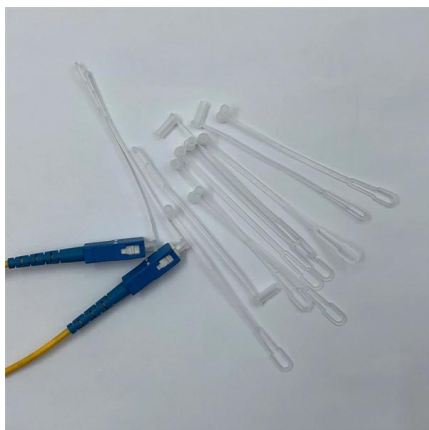
[Contact Us](#)



### Wire Mesh Cable Trays Technical Information Detailed,

Trays shall be supported at a maximum span of 2.5m by trapeze, wall, floor or channel mounting methods and will not exceed maximum loads as specified by

[Contact Us](#)



### What is Cable Tray Height for Optimal Cable Management

One crucial factor to consider when selecting the appropriate cable tray for a specific installation is the cable tray height. The height of a cable tray determines how much space it can

[Contact Us](#)



**#dialuxevo #lightingdesign #powersystems  
#electricalengineering #**

Backup Systems -Generators: selection and sizing  
-Automatic Transfer Switch (ATS) design  
-UPS systems: types and selecting the best option  
-Power Factor Correction: Designing Capacitor Banks 5.

[Contact Us](#)



### Wire Mesh Cable Trays Technical Information Detailed,

Wire Mesh Cable Tray Detailed Information: a. A job site, field adaptable support system primarily for low voltage telecommunication and fiber optic cables. These

[Contact Us](#)



### CABLE TRAY SYSTEMS GUIDE

The Ladder Tray features light, rugged, tubular steel construction. It is designed for mechanical support and strain relief in long runs of cable and creates a smooth gradual bend for cable. Rail and stringer

[Contact Us](#)



### HOW TO CHOOSE THE RIGHT CABLE TRAY

A cable tray is a system used to support and route cables and wiring in an industrial environment. Cable trays are used in various installations, including commercial construction, data centers, computer

[Contact Us](#)





## Wire Mesh Cable Tray Installation: A Comprehensive

Verify that all supports and fasteners are secure. Wire Mesh Cable Tray Best Practices for Wire Mesh Cable Tray Installation Follow Manufacturer

[Contact Us](#)



### Standard Wire Mesh Cable Trays: Short Span Supports.

These systems are typically steel wire mesh, zinc plated. b. standard widths of 1.5, 2, 4, 6, 8, 12, 16, 18, 20, and 24 inches c. standard depths of 1, 2, and 4 inches d.

[Contact Us](#)

### Cable Tray Sizing

Learn cable tray sizing with accurate width and dimension calculations. Avoid common mistakes for efficient cable management. Read our expert guide now!

[Contact Us](#)



### Mesh cable tray systems

The GR-Magic®, the Magic® G mesh cable tray, and the heavy-duty SGR mesh cable tray with their various shapes, side heights, surfaces and range of accessories are ideal for satisfying the most

[Contact Us](#)



## How to Install a Wire Mesh Basket or Cable Tray , CMW

Regarding cable management, correctly installing a wire mesh basket tray or cable tray is crucial for safety and efficiency. The short answer is that you need to measure up, choose the right

[Contact Us](#)



## Vertical & Overhead Installation of Cable Trays and Wire Mesh

Yes, wire mesh baskets and cable trays can be installed vertically or overhead, and they absolutely should be in many cabling projects. Whether routing Cat 6 cables in a tight riser space or

[Contact Us](#)



## Cable Support System Requirements

Unipath System The Unipath cable support system offers a hybrid of the center rail support system and a support structure similar to a bridle ring. Made of a sturdy

[Contact Us](#)



## Wire Mesh Cable Tray Floor & Rack Mounting

Wire mesh cable tray network racks top installation, floor and under-floor mountings.

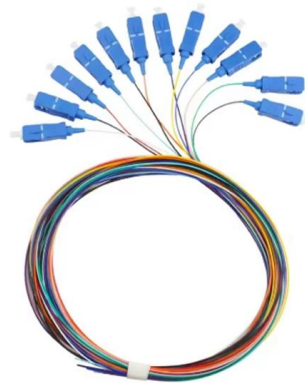
[Contact Us](#)



## Cable Tray Dimensions and Specifications as per NEC

The entire amount of the cross-sectional areas for all of the single conductor cables that are going to be positioned in the cable tray needs to be

[Contact Us](#)



## Cable Tray Support Spacing: Key Guidelines Explained

Explore the essential cable tray support spacing requirements for safe and efficient installations. Learn NEC guidelines for perforated, ladder, and wire

[Contact Us](#)

## Guide to cable support systems

The load capacity of the cable trays according to the support width can be read off in the diagram using load curves - here, shown as an example for a cable tray with the tray widths 100 to 600 mm.

[Contact Us](#)



## Wire Mesh Tray System

Wire Mesh Trays in various edge heights Edge Height 30 Edge Height 40 Edge Height 54/60 Edge Height 105/110 Cable Support MCH Fittings Edge height 54 mm Elbow 90°, adjustable MTCE Barrier

[Contact Us](#)



## Cable Tray Technical Guide A practical guide to product selection and

**SOLID-BOTTOM CABLE TRAY** Providing additional cable protection, solid-bottom cable tray is sometimes preferred to support and protect numerous small instrumentation and control cables.

[Contact Us](#)



## Best Fixing and Mounting Options for Cable Trays , CMW

Regarding cable management, the fixing and mounting you choose for your cable trays can make or break your setup. Whether you're managing voice, data, or electrical cables, ensuring

[Contact Us](#)



## Wire Mesh Cable Tray , Cable Tray Support

WM wire mesh cable tray, for light duty jobs, comes in standard height of 50mm, 100mm and 150mm. WM wire mesh cable trays are ideal for commercial and data center cable management, providing a

[Contact Us](#)



## Cable Tray Dimensions Guide: Standard Sizes, Tray

Explore standard sizes by tray type, understand width and depth limits, and see how to calculate and choose compliant cable tray sizes for real projects.

[Contact Us](#)



## Ultimate Guide to Cable Tray Selection -



## Types,

Learn how to choose the best cable tray system for your needs. Explore types, materials, installation tips, and NEC compliance in this expert guide.

[Contact Us](#)



## Contact Us

---

For datasheets, pricing, or custom fiber access solutions, please visit:  
<https://frindel.es>