

What is ta in relay protection





Overview

TA thermal overload relays are used with A Line contactors for the protection of motors having a nominal voltage of up to 600VAC max per UL/CSA (690VAC and 800VDC per IEC). Types of Protective Relays: Protective relays are categorized by their mechanism (electromagnetic, static, mechanical) and function. They are intended to quickly identify a fault and isolate it so the balance of the system continue to run under normal conditions. This handbook covers the code of practice in protection circuitry including standard lead and device numbers, mode of connections at terminal strips, colour codes in multicore cables, dos and donts in execution.



What is ta in relay protection



Types of Protective Relays

This article covers various types of protective relays, such as overcurrent, directional, and differential relays, highlighting their operating characteristics and applications

[Contact Us](#)

Types of Electrical Protection Relays or Protective Relays

? Key learnings: Protective Relay Definition: A protective relay is an automatic device that senses abnormal conditions in electrical circuits and

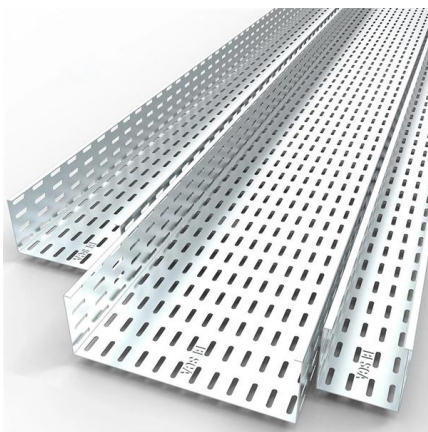
[Contact Us](#)



Types of Electrical Protection Relays or Protective Relays

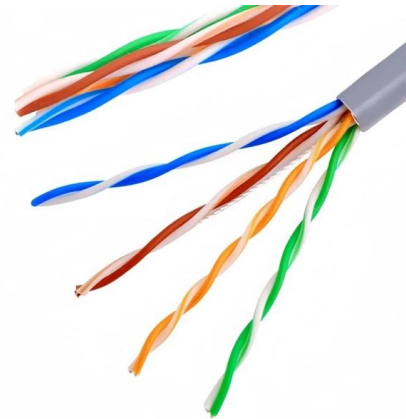
Protective relays can be categorized based on their

[Contact Us](#)



The Interactive Relay Protection Reference

Browser-based relay protection tools, learning modules, and technical references for protection engineers. Analyze COMTRADE, coordinate relays, test directional trip logic, and visualize phasors.



Protective relay maintenance training , AVO Training

The Protective Relay Maintenance Distribution course is an intensive, hands-on, lab oriented presentation. The participant will learn the basics of distribution

[Contact Us](#)

Thermal Overload Relays

TA thermal overload relays are used with A Line contactors for the protection of motors having a nominal voltage of up to 600VAC max per UL/CSA (690VAC and 800VDC per IEC).

[Contact Us](#)



Protection Relay : Circuit, Working, Types, Codes & Its

What is a Protection Relay? A relay that is used to detect the faults of the circuit breaker and start the circuit breaker operation to disconnect the

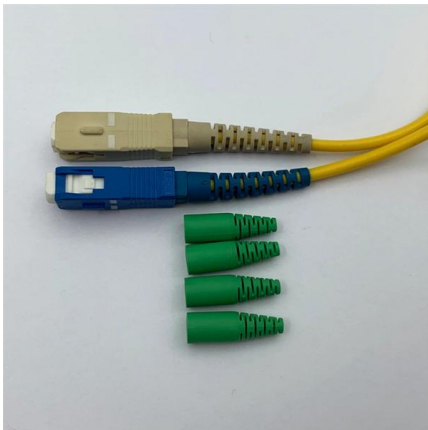
[Contact Us](#)

Watch Relay (2025) Full Movie Online



Rent the movie Relay (2025) starring Riz Ahmed, Lily James, Sam Worthington and directed by David Mackenzie with Plex

[Contact Us](#)



Power transformer protection

Transformer protection relay This specification is valid for applications where usually following criterions are applicable Dedicated two winding transformer protection and circuit breaker control For power

[Contact Us](#)

Relay Protection Engineer Jobs in the Middle East

Apply now to over 100 Relay Protection Engineer jobs in Middle East and Gulf and make your job hunting simpler. Find the latest Relay Protection Engineer job vacancies and employment

[Contact Us](#)



Basic protection relay knowledge

Definite time delay means that the protection operate time dose not change or depend on the fault type or the fault current magnitude. Inverse time delay, on the other hand, depends on the current

[Contact Us](#)





Power System Protective Relays: Principles & Practices

Protective relays and devices have been developed over 100 years ago to provide "lastline" of defense for the electrical systems. They are intended to quickly identify a fault and isolate it so the balance of

[Contact Us](#)



Protective Relay Market Report 2024-2030 [345 Pages]

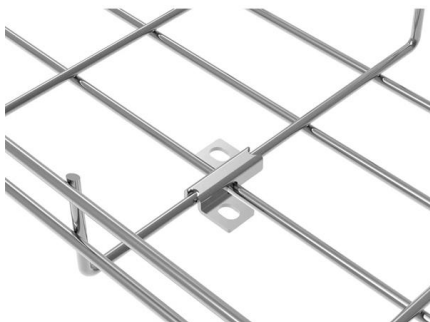
The global market for protective relay is experiencing significant growth, driven by several key factors. Firstly, the increasing demand for reliable and uninterrupted

[Contact Us](#)

TA110DU-110 , ABB

The TA110DU-110 thermal overload relay is an economic electromechanical protection device for the main circuit. It offers reliable and fast protection for

[Contact Us](#)



Protective relay

Electromechanical protective relays at a hydroelectric generating plant. The relays are in round glass cases. The rectangular devices are test connection blocks,

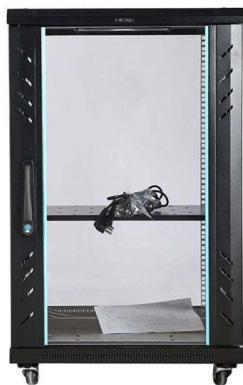
[Contact Us](#)



Substack blames iCloud Private Relay outage for big drop in

Apple's extended iCloud Private Relay outage caused a scare for a number of writers, but Substack's explanation misses the full picture.

[Contact Us](#)



Practical handbook for relay protection engineers , EEP

The most important requisite of the protective relay is reliability

[Contact Us](#)

Protective Relay: Working, Types, and Applications

Learn about protective relays, their working principle, types, and applications in power systems. Discover how relays protect transformers,

[Contact Us](#)



Protective Relaying Principles and Applications

Protective Relaying Principles and Applications
The article provides an overview of protective relaying principles and their applications for high-voltage power system

[Contact Us](#)



Protective Relay Basics

Traditionally, protective relays were electromechanical devices utilizing induction disk, coils, contacts, and solenoid elements to determine protective characteristics.

[Contact Us](#)



Buy Telemecanique AM63 Thermal Overload Relay 48-63A

Protect your motors with the Telemecanique AM63 Thermal Overload Relay. Reliable overload protection for industrial automation systems.

[Contact Us](#)

Protective relay

Distance relays, also known as impedance relay, differ in principle from other forms of protection in that their performance is not governed by the magnitude of the

[Contact Us](#)

Focus creates quality products



Buy ACF 3Y Relay

The ACF 3Y Protection Relay by Protection Controls, Inc. is an essential component designed for reliable control in electrical systems. This Relay 3Y is ideal for industrial automation, providing

[Contact Us](#)



Line protection distance relay

A Zone-2 trip on a distance relay indicates a fault, usually in the last 20% of the protected line or just beyond the remote bus. It operates with a slight time delay (typically 0.3-0.4s) to allow

[Contact Us](#)



Types of Protective Relays

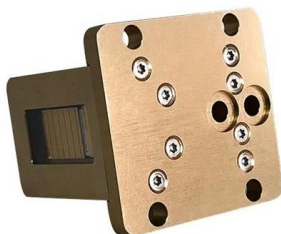
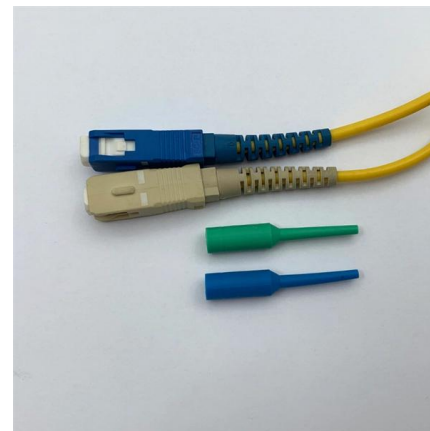
A protective relay is a device that detects the fault and initiates the operation of the circuit breaker to isolate the defective element from the rest of the system.

[Contact Us](#)

Standby Earth Fault Relay 51N, Operation, Construction

Protection Electrical Standby Earth Fault Relay 51N, Operation, Construction What is Standby Earth Fault Relay: A Standby earth fault relay is nothing but an earth

[Contact Us](#)



Best Cross-Chain Intent Protocols 2026 , Support

Best cross-chain intent protocols 2026: Eco Routes, Across, Relay, LiFi, UniswapX, Aori, CoW Swap compared with the Rail/Layer/App framework.

[Contact Us](#)



Contact Us

For datasheets, pricing, or custom fiber access solutions, please visit:
<https://frindel.es>