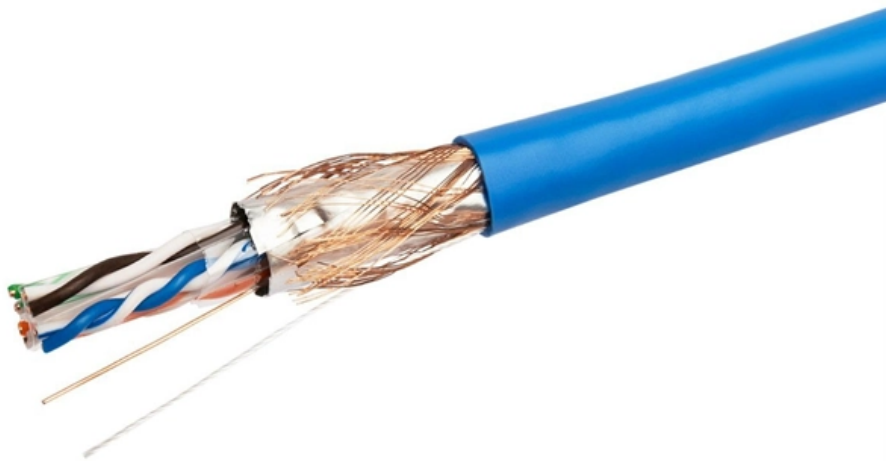


# **What is a normal eq value for an optical module**





## What is a normal eq value for an optical module

---



### How to Evaluate the Performance of Optical Modules

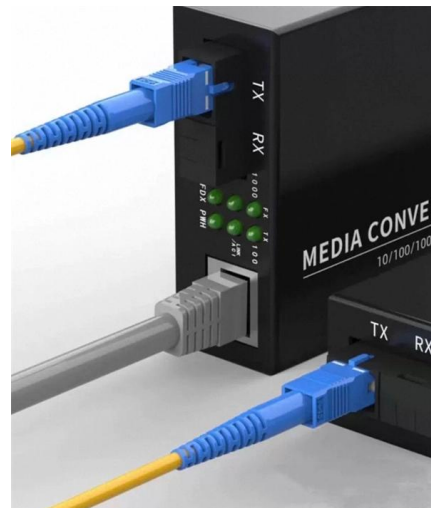
Evaluating the performance of optical modules is a practical discipline: you must verify optical power and signal quality, confirm electrical/optical compliance, validate link-level behavior

[Contact Us](#)

### Optical Module Performance: Key Power and Sensitivity Metrics

In modern optical communication systems, optical modules serve as the core photoelectric conversion components whose performance metrics directly impact the efficiency and

[Contact Us](#)



### Chapter 4.4.4

Optical gain equalization improves the signal-to-noise ratio, and thus it enhances the performance of optical amplifiers and allows for longer fiber spans between

[Contact Us](#)

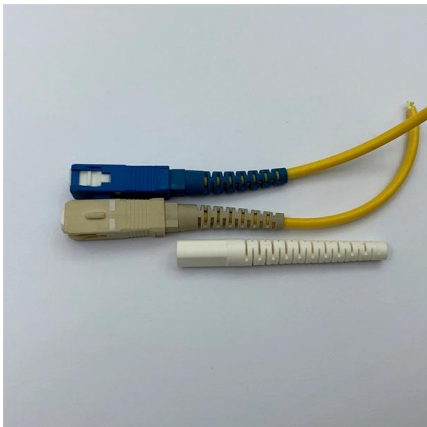
### How to add value to MSA optical transceivers

Addressing both the optical monitoring and control design task, this approach allows designers the flexibility to easily incorporate



additional features, thus adding value to their optical

[Contact Us](#)



### Introduction to Main Parameters of Optical Module Eye

The larger the MARGIN value, the more standard the eye diagram and the better the signal quality. Ousent Technology provides a variety of optical

[Contact Us](#)

### Understanding Optical Transceiver Performance: TX

An understanding of these concepts is pivotal to establishing an effective and efficient optical network. This comprehensive guide, built upon

[Contact Us](#)



### What are the indicators to measure the performance of optical modules

The performance indexes affecting the optical transceiver mainly include average transmitted optical power, extinction ratio, optical signal center wavelength, overload optical power, receiving sensitivity

[Contact Us](#)





## The Most Comprehensive Guide Of Optical Modules

Explore the ultimate guide to optical modules. Learn types, functions, performance metrics & how to choose the right module for your fiber network.

[Contact Us](#)



### What is the best optical module input power dbm?

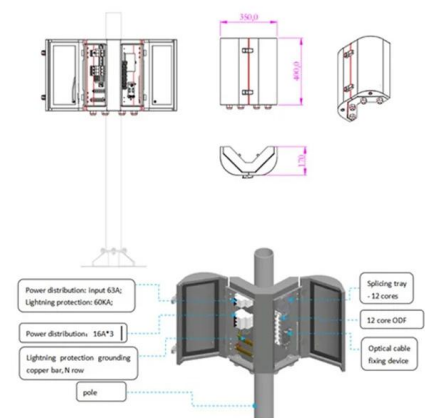
In conclusion, the best optical module input power level in terms of dBm can vary depending on the module type and its specific requirements. It is important to

[Contact Us](#)

### Introduction of Some Parameters Optical Module-

The value of the extinction ratio is not the better the optical module, but the better the optical module whose extinction ratio meets the IEEE 802.3 standard. Above is all content of this article. As a

[Contact Us](#)



### TDECQ: Understanding the Theory Behind the Key

Historically, several parameters were used to quantify the quality of an optical transmitter. Extinction ratio (ER) indicates how well available laser power

[Contact Us](#)



### Understanding Transceiver Equalization -- Xena Cable Performance

The TX Input Equalization is applied before the module converts the electrical signal to optical for transmission. Understanding the RX Output Equalizer in Transceivers RX Output Equalization refers

[Contact Us](#)



### PON Module Parameters Guide: How to Choose the

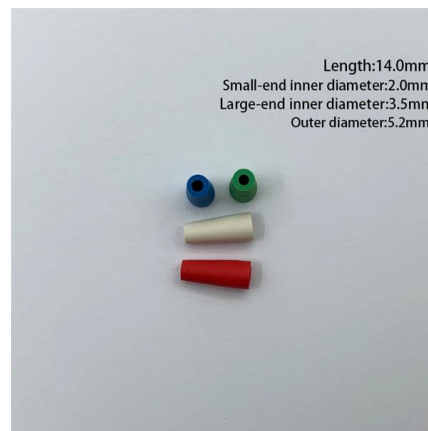
Discover key PON module parameters for selecting the best GPON and EPON modules. Understand their impact on network performance and make

[Contact Us](#)

### Explanation of Optical Module Parameters

Considering that some newcomers to optical modules may not understand the letters on the optical module or the specific meanings of the parameters on the optical module, the following is

[Contact Us](#)



### SFP Optical Module Specifications: Standards & Performance

From electrical and optical parameters to environmental limits and diagnostic capabilities, we explain what each specification means in practice, how it affects real-world performance, and the

[Contact Us](#)



## Understanding Tx and Rx Power of an SFP Optical

This value is the TX power or RX power of the SFP optical module. It should be noted that we need to ensure the cleanliness of the optical interface and the end

[Contact Us](#)



## Optical Module Common Failure Of Optical Power

The article Digital Diagnostic Function (DDM) For Optical Modules describes that DDM function can be used for real-time monitoring and fault location of the

[Contact Us](#)

## redundancy\_reduction\_longdoc/vocabulary\_pubmed.json at master ·

This is the official code for the paper 'Systematically Exploring Redundancy Reduction in Summarizing Long Documents'. - Wendy-Xiao/redundancy\_reduction\_longdoc

[Contact Us](#)



## Optical Equalizer: Basics and Specifications

Here are typical specifications for a dynamic gain equalizer used for 10 Gbps and 40 Gbps optical networks (in DWDM systems). This allows for cascading about 50

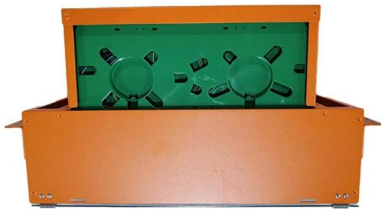
[Contact Us](#)



## Optical Module: A Comprehensive Analysis from Source

Optical modules are key transmission components in communication networks, and their applications, technologies, types, and terminology are

[Contact Us](#)



## Key Parameters Interpretation of Optical Modules

The key performance indicators of the transmitting end of the optical module mainly include: the average transmitted optical power, the extinction ratio, and the

[Contact Us](#)

## The key points for optimizing the performance of optical

The average transmitted optical power refers to the optical power output of the light source at the transmitting end of the optical module under

[Contact Us](#)



## Understanding Optical Transceiver Modules: A Comprehensive Guide

When you pick up an optical transceiver module, several parameters need to be defined to ensure compatibility and efficiency. These include physical dimensions, interface types, spectral

[Contact Us](#)



## What are the Key Performance Parameters of Optical Modules?

If you are purchasing or deploying optical modules, it is recommended to comprehensively consider the transmission distance, network rate, interface device compatibility, and the above performance

[Contact Us](#)



## The key points for optimizing the performance of optical

By checking whether these values are within their normal range, you can assess the performance of the optical module. What factors affect the

[Contact Us](#)

## Contact Us

---

For datasheets, pricing, or custom fiber access solutions, please visit:  
<https://frindel.es>