

What happens if the optical module isn't connected to the switch





Overview

If the switch fails to detect the module correctly, the port will not work properly. Based on typical issues encountered with optical modules in daily switch applications, this document summarizes basic troubleshooting steps for resolving common faults: 1. SFP or SFP+ optical transceiver failure can happen in multiple recognizable ways. The most notable fault is the "module not detected" error, which describes a situation in which a switch cannot detect the transceiver. So, if you're upgrading or replacing equipment and your network goes down, there's a good chance that the problem lies in a piece of hardware.



What happens if the optical module isn't connected to the switch



ITPro Today, Network Computing, IoT World Today combine

ITPro Today, Network Computing and IoT World Today have combined with TechTarget. The page you are looking for may no longer exist.

[Contact Us](#)

What Can we do if no response when an optical module

According to the customer's feedback, how should we analyze and solve the issue that the switch and optical module are incompatible or cannot be

[Contact Us](#)



Summary of common problems and solutions of optical modules in

Solution: Check whether the working parameters, interface information and receiving and sending of the optical module are normal, and then check the optical fiber jumper, or try to replace the optical fiber

[Contact Us](#)



Troubleshooting and Repairing Optical Transceiver Failures in

Why isn't my SFP module recognized by the switch? Often, switches will not recognize SFP modules because they are not tightly connected, they are incompatible modules, or the switch



Optical Module Application: Common Problems & Troubleshooting

Based on typical issues encountered with optical modules in daily switch applications, this document summarizes basic troubleshooting steps for resolving common faults:

[Contact Us](#)



Troubleshooting and Repairing Optical Transceiver Failures in

SFP or SFP+ optical transceiver failure can happen in multiple recognizable ways. The most notable fault is the "module not detected" error, which describes a situation in which a switch

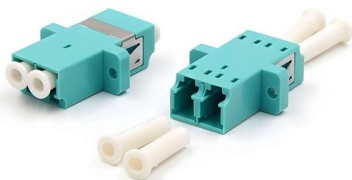
[Contact Us](#)



Optical Module Failure Diagnosis and Prevention:

A comprehensive guide on Optical Module Failure diagnosis and prevention to maintain network stability through effective troubleshooting,

[Contact Us](#)





Demystifying Optical Transceivers: Your Top FAQs

Optical transceivers are the unsung heroes of modern connectivity, powering everything from cloud data centers to enterprise networks. Yet,

[Contact Us](#)



optical module Troubleshooting and Common Problems

optical module troubleshooting guide covering common faults, compatibility issues, optical link failures, ESD risks, and practical solutions.

[Contact Us](#)

How to Install and Remove Optical Modules Safely

Small Form-factor Pluggable modules (SFP module) are the workhorses of modern network connectivity, enabling flexible fiber optic or copper

[Contact Us](#)



Replacing an Optical Module

Use optical modules certified for Huawei data center switches. Non-certified optical modules cannot ensure transmission reliability and may affect service stability on the switch. Huawei is not liable for

[Contact Us](#)



Optical Module: Typical Optical Module Troubleshooting Procedure

If it is not a Huawei-certified optical module, replace it with a Huawei-certified optical module. If the optical module is installed on a GE port, run the display interface `GigabitEthernet x/x/x` command to

[Contact Us](#)



Analyzing Abnormal Situations During Installation and Use of Optical Module

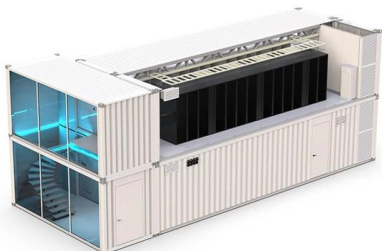
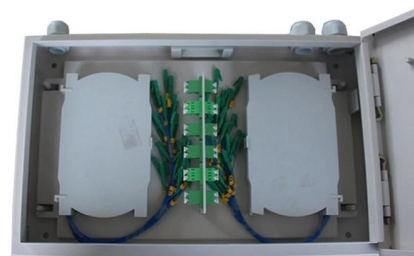
As core components of optical communication systems, the proper installation and use of optical modules directly impacts network stability. This article systematically identifies common

[Contact Us](#)

16 Tips to Troubleshoot Your Optical Transceiver Issues

The first thing you should do is re-plug the optical module into the switch slot and make sure it is firmly inserted. If the problem persists, please

[Contact Us](#)



Optical Module Troubleshooting

Optical Modules on the Local and Remote Devices Cannot Communicate Fault Description
A switch is connected to a remote device through optical interfaces and optical fibers. The two optical ports are

[Contact Us](#)



Typical Troubleshooting Cases of Optical Module

If possible, remove and reinstall the optical modules to check whether the fault is rectified. If the fault persists, run the reboot command to restart the switch or power cycle the switch, and check whether

[Contact Us](#)



How to solve when the optical module fails?-fiberwdm

During the use of the optical transceiver module, various problems will inevitably occur. The following summarizes the main reasons and solutions in the event of failure. Matters needing

[Contact Us](#)



Common Problems And Solutions When Using Optical

Reason and solution: The main reason is that the optical module is incompatible. You can open the operating data, check the manufacturer information of the

[Contact Us](#)



5 troubleshooting tips for connecting the SFP's

Here are 5 troubleshooting tips for connecting the SFP's. Have you ever tried to plug an optic SFP+ transceiver into an SFP+ port to discover that the connection didn't

[Contact Us](#)





Optical module common faults and solutions

Replace the connected ports to see if the same phenomenon exists; if the same phenomenon exists, check whether the intermediate devices and transmission media in the

[Contact Us](#)



View the Optical Module Status on a Switch

Once the transceiver and fiber optic cable are plugged in properly in the switch optical module, the Optical Module Status page of the web-based utility provides the current information for

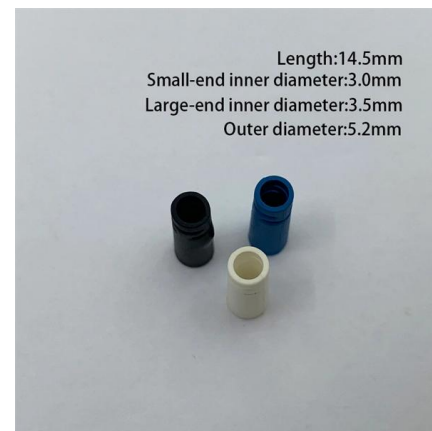
[Contact Us](#)



What is an Optical Network Terminal (ONT)? Your

This is where the ONT comes in ? What is an Optical Network Terminal (ONT)? An Optical Network Terminal (ONT), also known as a fiber

[Contact Us](#)



Why My SFP Transceiver Isn't Working?

Have you ever plugged an optic SFP transceiver but discovered that the connection didn't work? SFP failure may be caused by several aspects. Here

[Contact Us](#)





What is an Optical Terminal Network and Why Do I

What is an Optical Network Terminal (ONT)? You'll typically find an Optical Network Terminal (ONT), or fiber box, in a central part of your home, like

[Contact Us](#)



Optical Module Common Failure Of Optical Power

When the optical modules at both ends of the link work normally, the transmit optical power is within a certain range, which can be learned by checking the

[Contact Us](#)

Contact Us

For datasheets, pricing, or custom fiber access solutions, please visit:
<https://frindel.es>