

# **What does 1300nm mean in single-mode fiber**





## Overview

---

That value determines whether the module is designed for multimode fiber (MMF) or single-mode fiber (SMF), how much attenuation the signal will experience, how dispersion behaves over distance, and whether optical amplification or DWDM systems are possible. In this guide, we will explore the distinctions between 1300nm and 1310nm transceivers, examine the characteristics of SMF and MMF. For example, the FOA notes that for glass fibers, "we use light in the infrared region."



## What does 1300nm mean in single-mode fiber

---



### Fiber Optic Wavelengths Explained: 1310nm vs 1550nm

Fiber Wavelengths in the Optical Spectrum Fiber wavelengths used in telecommunications range from 770nm to

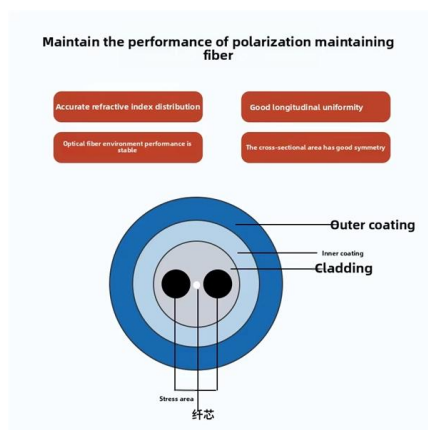
[Contact Us](#)

### What is the difference between SFP 1310nm and

Multimode Fiber Compatibility: 850nm SFP modules are designed to work with multimode fiber (MMF), which is more cost-effective than single-mode fiber



[Contact Us](#)



### 1310nm Single Mode Fiber Optical Transceivers Explained

A 1310nm single mode fiber optical transceiver is one of the most widely used optical transceivers in modern fiber-optic networks, especially for short-to-medium distance transmission over single-mode

[Contact Us](#)

### 1300nm and 1310nm wavelengths in Fiber Optic Communications

850nm and 1300nm light wavelengths are produced by LEDs and are standards for multimode fiber. 1310nm and 1550nm light wavelengths are produced by laser diodes and are



### What is the difference between 1300nm and 1310nm?

In optical communication, the term "1300nm" is often used to represent the range from approximately 1264nm to 1364nm. This wavelength range is commonly associated with the third

[Contact Us](#)



### G.657.A2 Bend-Insensitive Single-Mode Optical Fiber

Explore G.657.A2 bend-insensitive single-mode optical fiber for FTTH, dense indoor routing, compact terminal boxes, and drone fiber or FPV tether systems. Learn key specs, bend performance,

[Contact Us](#)



### Single vs multi mode fiber

Because of their larger core size, multi-mode fibers have higher numerical apertures which means they are better at collecting light than single-mode fibers. Multi mode fiber has thicker core, so

[Contact Us](#)



## What Is Single Mode Fiber and How Does It Work

Single mode fiber uses a small core to transmit one light path, enabling high-speed, long-distance data with minimal signal loss and low dispersion.

[Contact Us](#)



## Fiber Optic Wavelengths Explained: 850 vs 1310 vs

In standard silica single-mode fiber, material dispersion and waveguide dispersion counterbalance at a particular wavelength (around 1300 nm), making

[Contact Us](#)

## Fiber Optic Wavelengths Explained: 850 vs 1310 vs

For example, the FOA notes that for glass fibers, "we use light in the infrared region typically around 850, 1300 and 1550 nm" because attenuation

[Contact Us](#)



## Exploring the Intricacies of Single-Mode Fiber Optic Cable

As single-mode fiber optics aids the evolution of modern technologies, there is an ever-increasing need to understand its role and structure. This blog intends to explain the specifics of

[Contact Us](#)



## What are typical wavelengths for single-mode fiber

Low Attenuation: Single-mode fiber exhibits the lowest signal loss (attenuation) at these wavelengths. This means signals can travel longer distances without needing repeaters.

[Contact Us](#)



## Fiber Optic Transmission Modes

Dispersion Effects Single mode fiber exhibits minimal pulse dispersion, resulting in high bandwidth and allowing for longer transmission distances.

[Contact Us](#)

## DOC-000537-ANG-A-vulga dd

Information (A, B or C) is propagated in fiber according to N modes (paths), which deform it, as if it were "duplicated" N times (for example on the diagram above, the mode 3 path is longer than the mode 2

[Contact Us](#)



## Understanding Wavelengths In Fiber Optics

Multimode fiber is designed to operate at 850 and 1300 nm, while singlemode fiber is optimized for 1310 and 1550 nm. The difference between 1300 nm and 1310 nm is

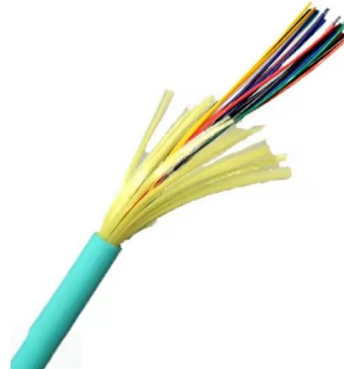
[Contact Us](#)



## What Does "nm" in SFP Mean?

What Does "nm" in SFP Mean? Understanding nm in SFP The abbreviation "nm" stands for nanometer, a unit of measurement equal to one billionth of a meter (1

[Contact Us](#)



## What is the difference between 1300nm and 1310nm?

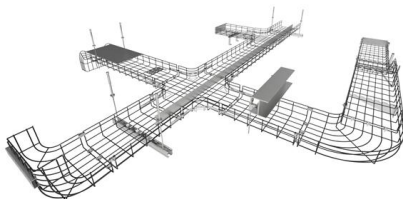
While the numerical difference between 1300nm and 1310nm is minimal, they often represent different wavelength windows within the overall optical spectrum. Here are the key

[Contact Us](#)

## Single-Mode vs. Multi-Mode Fiber Optic Cables

Fiber optics have enabled telecommunications companies to improve data network performance and speed significantly. Fiber optic cables form the foundation of these networks, and to optimize

[Contact Us](#)



## Single Mode Fiber Cable Explained

Complex manufactures fiber optic solutions that improve and extend the performance of broadcast operations. Because the Complex US fiber assembly facility has

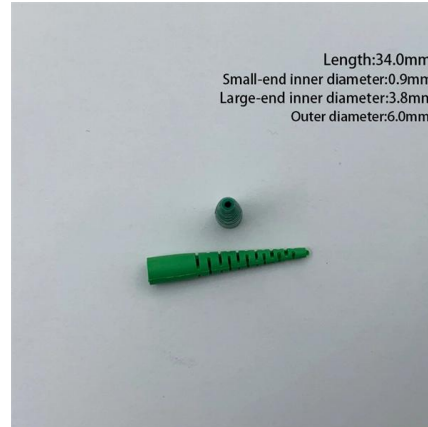
[Contact Us](#)



### What is the difference between 850nm and 1300nm fiber?

Single-mode Fiber: Designed to carry a single light mode, single-mode fiber is used with the 1300nm wavelength for long-distance communication. It has a smaller

[Contact Us](#)



### Fiber Optic Cable Types Explained

OS1 single mode fiber optic cables are made with a single mode fiber core, which means that they have a very small core diameter of 9 microns. This allows the

[Contact Us](#)

### Exploring the Role of Wavelengths in Optical Networks

Optical networks utilize specific wavelengths of light to transmit data efficiently over fiber-optic cables. The choice of wavelength is crucial, as it directly influences the

[Contact Us](#)

LoRa handheld portable base station



### SFP Wavelength Guide: 850nm vs. 1310nm vs. 1550nm

In contrast, 1310 nm and 1550 nm SFP modules are designed for single-mode fiber (SMF), which supports significantly longer distances due to

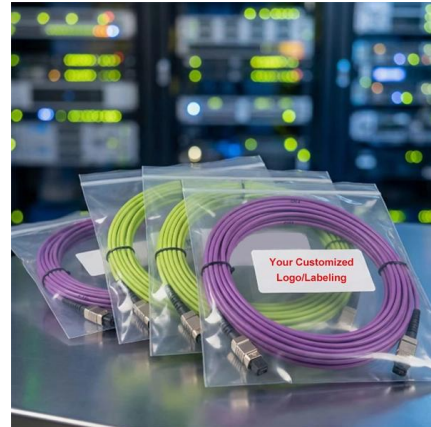
[Contact Us](#)



## Optical Fiber Types: Single-Mode vs. Multimode

Optical fiber is the backbone of modern networks -- from the internet backbone that connects cities to the short links inside data centers. Optical Fiber

[Contact Us](#)



### Single-mode optical fiber

Waves can have the same mode but have different frequencies. This is the case in single-mode fibers, where we can have waves with different frequencies, but of

[Contact Us](#)

## Single-Mode vs Multimode Fiber and 1300nm/1310nm SFP

Learn the differences between single-mode (SMF) and multimode fiber (MMF), understand 1300nm vs 1310nm SFP transceivers, and discover practical deployment scenarios for enterprise and data

[Contact Us](#)



### SFP Wavelength Guide: 850nm vs. 1310nm vs. 1550nm

Authoritative SFP wavelength guide: compare 850nm, 1310nm, 1550nm applications, link-budget implications, multimode vs single-mode

[Contact Us](#)



## What is difference between 1310nm and 1550nm?

And the color of compatible fiber optic patch cord is yellow. While the color coded bale clasp and color arrow on the label of multimode SFP modules are black and

[Contact Us](#)



## Understanding Wavelengths in Fiber Optics

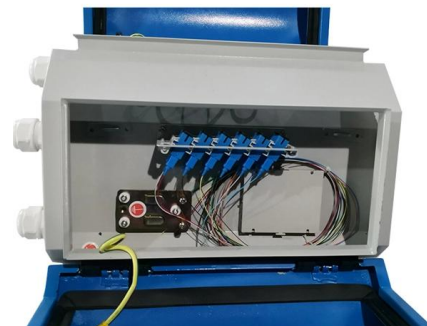
Both lasers and LEDs are used to transmit light through optical fiber. Lasers are usually used for 1310nm or 1550nm single-mode applications. LEDs

[Contact Us](#)

## Common Operating Wavelengths (850, 1300, 1310, 1550)

The 1300 nm window is a broad range used for multimode fiber, while the 1310 nm wavelength is a specific point within that range used for single-mode fiber. This

[Contact Us](#)



## Contact Us

---

For datasheets, pricing, or custom fiber access solutions, please visit:  
<https://frindel.es>