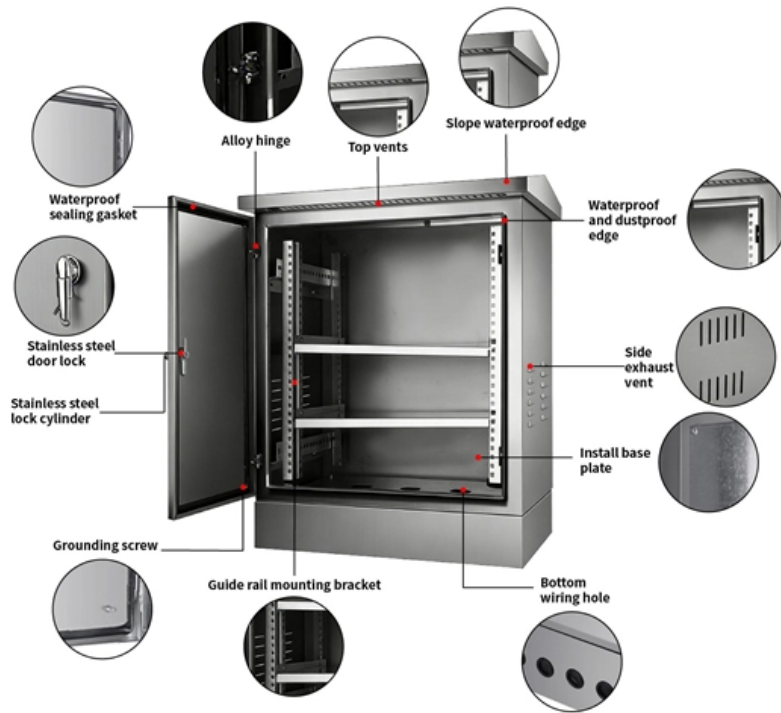


What are the selective settings for relay protection





Overview

Relay coordination refers to setting protective devices so that the relay closest to the fault operates first, while upstream relays act as backups. The protective philosophy is fundamentally grounded on the understanding that faults or abnormal operating. PSM and TMS settings that are Plug Setting Multiplier and Time Multiplier Setting are the settings of a relay used to specify its tripping limits.



What are the selective settings for relay protection

Module 6-Relay Setting Principles For Transmission



The document discusses relay setting principles for transmission line protection. It begins by outlining the four key characteristics of relay protection: selectivity,

[Contact Us](#)

PSM and TMS Settings Calculation of a Relay: Protection

PSM and TMS Settings are used to specify the tripping limits of a relay when a fault occurs. How to calculate the settings of the relay?

[Contact Us](#)



Relay Protection in HV/MV Substations: Calculations,

Effective relay protection in HV/MV substations requires a thorough approach encompassing calculations, precise settings, meticulous coordination,

[Contact Us](#)



Distribution Automation Handbook

The measuring principle ensures that the relay operates exclusively on faults inside the area of protection, which means that the protection is absolutely selective.

[Contact Us](#)



How to Determine Optimal Settings for Power System Protection Relays

Learn about the best methods and tools to choose the right settings for power system protection relays, and improve your network safety, reliability, and efficiency.

[Contact Us](#)



Power System Protective Relays: Principles & Practices

Protective relays and devices have been developed over 100 years ago to provide "lastline"of defense for the electrical systems. They are intended to quickly identify a fault and isolate it so the balance of

[Contact Us](#)



Adaptive Protective Relay Settings - A Vision to the Future

Multifunction relays have the ability to switch to other predefined protection settings stored in multiple selectable setting groups. These setting groups are typically limited to between four and eight static

[Contact Us](#)





WORLD WIDE WEB JOURNAL Home

will open to start the export process. The process may take but once it finishes a file will be downloadable from your browser. You may continue to browse the DL while the export process is in

[Contact Us](#)



Achieving Relay Coordination and Selective Short

Relay Coordination & Selective Protection The selected protection principle affects the operating speed of the protection, which has a significant

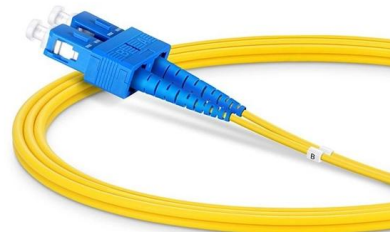
[Contact Us](#)



Power System Protective Relays: Principles & Practices

This presentation reviews the established principles and the advanced aspects of the selection and application of protective relays in the overall protection system, multifunctional numerical devices

[Contact Us](#)



Setting Relays for Selective Coordination , Delgado Relay Protection

Selective coordination is a critical aspect of relay protection in electrical power networks. It refers to the ability of protective relays to selectively detect and isolate faults, ensuring that only the

[Contact Us](#)

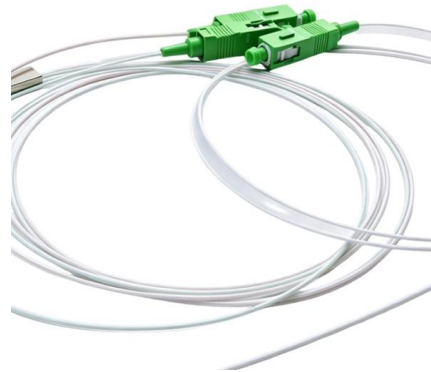




IEC Standard for Relay Coordination - Complete Guide

Relay coordination refers to setting protective devices so that the relay closest to the fault operates first, while upstream relays act as backups. The goal

[Contact Us](#)



Practical Guide to Selective Protection Coordination

Selective coordination refers to the strategic arrangement and setting of protective devices (such as circuit breakers, fuses, and relays) within an electrical system to

[Contact Us](#)



Protective Device Settings , Delgado Relay Protection Reference

Once the settings are determined, relay engineers configure the protective devices accordingly. The procedure involves inputting the calculated settings into the device's control panel

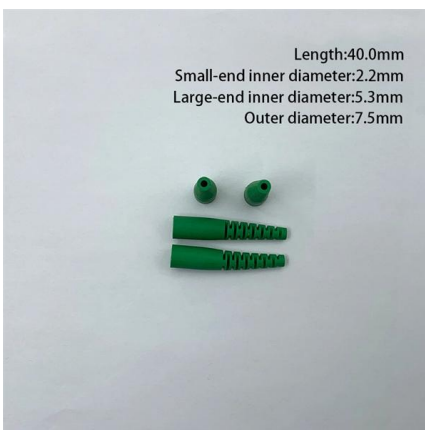
[Contact Us](#)



Relay Coordination Study: Selectivity Calculations , EEP

The primary criteria employed for the protective settings are the combined amperometric and chronometric selectivity. The primary objective is to

[Contact Us](#)

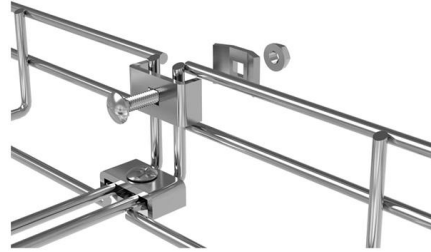




Protection Application Handbook

Selection of protection relays for different types of objects. Dimensioning of current and voltage transformers matching protection relays requirements. Design of protection panels including DC and

[Contact Us](#)



Configuring Relay Settings for Relay Technicians

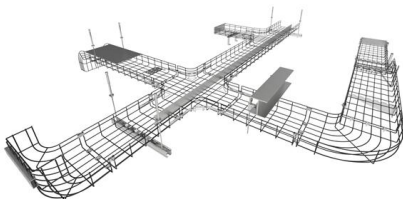
Optimizing Relay Settings for Electric Power Systems Optimizing Relay Settings in Electric Power Transmission, Control and Distribution In today's fast-evolving

[Contact Us](#)

Overcurrent Protection - Selectivity Analysis

It allows the user to design proper protection scheme that can guarantee fast, selective and reliable relay operation to isolate the faulty section of the power system.

[Contact Us](#)



Relay Protection in HV/MV Substations: Calculations,

Effective relay protection depends on accurate calculations, optimal settings, careful coordination, appropriate selection of relays, and thorough

[Contact Us](#)



Overcurrent Relay Setting Guidelines , PDF , Relay

This document provides guidelines for overcurrent coordination in industrial power systems. It recommends using instantaneous protection methods as the primary

[Contact Us](#)



Optimization of Multi level Relay Protection Adaptive Setting Strategy

To improve the reliability and sensitivity of multi-level relay protection in distribution networks with distributed power sources, this study designs an adaptive setting strategy optimization

[Contact Us](#)

Relay Settings Calculations

Introduction This technical report refers to the electrical protections of all 132kV switchgear. All calculations are based on the available documentation/ information. These settings may be

[Contact Us](#)



Basic protection relay knowledge

A fast and selective arc fault mitigation for air-insulated LV & MV switchgear and Relion protection and control relays and sensor technology protect staff and plant facilities for many years.

[Contact Us](#)



Importance of Relay Coordination , Delgado Relay Protection Reference

Importance of Relay Coordination Relay coordination is an essential aspect of electrical power network transmission and distribution systems. It involves the careful selection and setting of

[Contact Us](#)



Basic protection relay knowledge

A fast and selective arc fault mitigation for air-insulated LV & MV switchgear and Relion protection and control relays and sensor technology protect staff and plant facilities for many years.

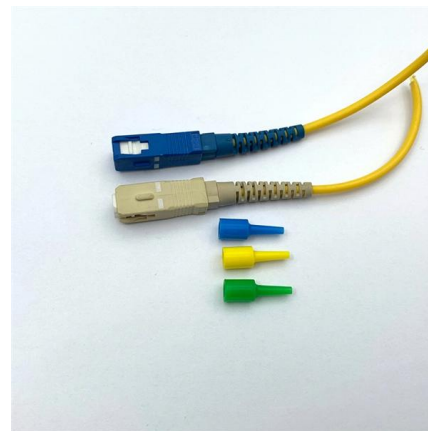
[Contact Us](#)



Overcurrent Protection , What It Is And Why It Matters

Overcurrent protection devices such as fuses, circuit breakers, and protective relays execute the protection strategy. They are not the strategy itself. Interrupting

[Contact Us](#)



Keep on Running--Select Motor Relay Settings to Balance Protection

Thermal protection settings of electric motors can often be challenging to set in a way that maximizes motor availability while providing adequate protection. This paper describes the thermal element that

[Contact Us](#)





Distribution Automation Handbook

A straightforward way of obtaining selective protection is to use time grading. The principle is to grade the operating times of the relays in such a way that the relay closest to the fault spot operates first.

[Contact Us](#)



Contact Us

For datasheets, pricing, or custom fiber access solutions, please visit:
<https://frindel.es>