

# **What are the regulations regarding the four characteristics of relay protection**





## Overview

---

IEC standards define the specifications, performance criteria, communication protocols, and testing methods for protection relays. (1) Selectivity: refers to that when the Electrical fault occurs, the relay protection device acts and only removes the fault element. Minimize the scope of power outages as much as possible to continue the operation of non faulty parts of the system. Protection relays are essential devices used to detect abnormal conditions in electrical circuits. They ensure the reliability and safety of power systems by outlining the necessary technical requirements and procedures. These principles and design criteria determine how well the basic function is performed and how in practice it deviates from the ideal.



## What are the regulations regarding the four characteristics of relay

---

Length:14.5mm  
Small-end inner diameter:2.0mm  
Large-end inner diameter:3.5mm  
Outer diameter:5.2mm



### Basic Theories of Power System Relay Protection

Relay protection with good performance should meet the requirements of reliability, selectivity, speed and sensitivity. In order to meet the requirements of a complex network, relay

[Contact Us](#)

### Practical handbook-for-relay-protection-engineers , PDF

It covers standard codes, wiring practices, and norms for protecting generators, transformers, and lines, and provides detailed information on relay characteristics

[Contact Us](#)



### Protective Relays and Their Functional Characteristics

Characteristics of Protective Relay To provide effective and reliable protection to the power system, a protective relay must have the following essential functional characteristics:

[Contact Us](#)

### Protection Relay : Circuit, Working, Types, Codes & Its

Protection Relay : Working, Circuit, Types, Codes, Functions & Its Applications November 1, 2023  
By Wat Electrical A relay is a four-terminal

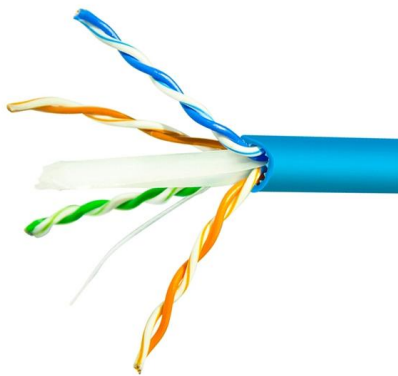
[Contact Us](#)



### **The basics of power system protection that every**

Introduction to relay protection Protection is the branch of electric power engineering concerned with the principles of design and operation of

[Contact Us](#)



### **Practical handbook for relay protection engineers , EEP**

Relay protection circuitry This handbook covers the code of practice in protection circuitry including standard lead and device numbers, mode of

[Contact Us](#)



### **Relay Characteristics**

Understanding Relay Characteristics Relays, whether for small DC/AC applications, sensitive circuits, or power control, share common operating

[Contact Us](#)





## Characteristics of Protective Relay

Characteristics of Protective Relay:  
Characteristics of Protective Relay elements using different operating principles. These principles and design criteria

[Contact Us](#)



## IEC Standard For Protection Relays : Electrical

The IEC standard for protection relays includes coordination guidelines for time-current characteristics, selectivity, and sensitivity. Proper coordination

[Contact Us](#)

## Practical handbook-for-relay-protection- engineers , PDF

The handbook for protection engineers includes guidelines on protective circuitry, protective relay principles, and testing procedures for switchgear and relays. It

[Contact Us](#)



## What are the four characteristics of relay protection?

Main protection refers to the protection that can reflect the fault of the component itself and quickly remove the fault as required; Backup protection

[Contact Us](#)



## The Relay Testing Handbook: Principles and Practice

This online protective relay testing seminar follows Chris Werstiuk (author of The Relay Testing Handbook) as he tests a relay from start to finish. You'll learn the basic skills needed to test any

[Contact Us](#)



### Relay control and protection guides

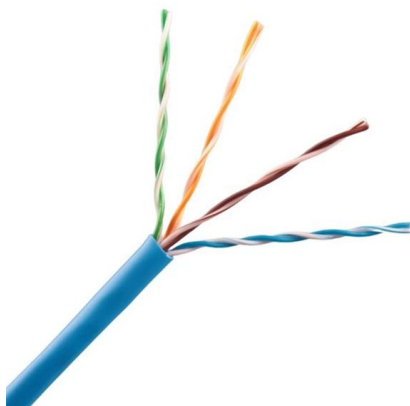
Protection Relays The relay is a well known and widely used component. Applications range from classic panel built control systems to modern

[Contact Us](#)

### Distribution Automation Handbook

Time-graded protection is implemented using overcurrent relays with either definite time characteristic or inverse time characteristic. The operating time of definite time relays does not depend on the

[Contact Us](#)



### Characteristics of Protective Relay

Characteristics of Protective Relay elements using different operating principles. These principles and design criteria determine how well the basic function is

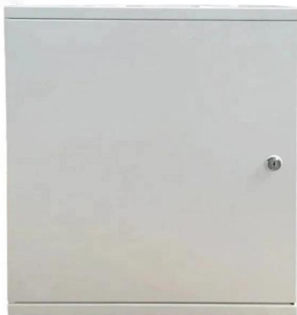
[Contact Us](#)



## European Standards for Relay Protection

These standards provide guidelines and regulations for the design, implementation, and operation of relay protection systems in Europe. They ensure the reliability and safety of power

[Contact Us](#)



## The Role of Protection Relays in Power Systems and an

Protective relays are critical in power systems because they serve as decision-making devices that ensure the safe operation of power grid. They play a key role in power system protection.

[Contact Us](#)

## Protective Relaying Philosophy and Design Guidelines

To accomplish the design objectives, four criteria for protection should be considered: fault clearing time; selectivity; sensitivity and reliability (dependability and security). 2.2.1 Fault clearing time is defined

[Contact Us](#)



## Power System Protective Relays: Principles & Practices

They are intended to quickly identify a fault and isolate it so the balance of the system continue to run under normal conditions. The selection and applications of protective relays and their associated

[Contact Us](#)



## ISO Standards for Relay Protection

Moreover, regulations and guidelines are often established at individual country or regional levels to ensure compliance with safety and performance requirements. These regulations

[Contact Us](#)



## Types of Electrical Protection Relays or Protective Relays

Types of protection relays are mainly based on their characteristic, logic, on actuating parameter and operation mechanism. Protective relays can be

[Contact Us](#)

## Practical handbook for relay protection engineers , EEP

Also principles of various protective relays and schemes including special protection schemes like differential, restricted, directional and distance

[Contact Us](#)



## What is a Protective Relay? Principle, Advantages,

A protective relay is an electrical component that is designed to trip a circuit breaker when a fault is encountered or identified.

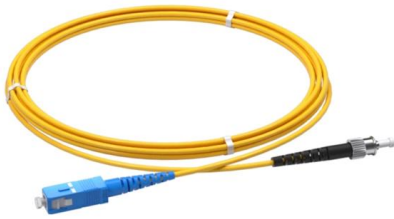
[Contact Us](#)



## IEEE Guide for Protective Relay Applications to Transmission Lines

Abstract: Information on the concepts of protection of ac transmission lines is presented in this guide. Applications of the concepts to accepted transmission line-protection schemes are also presented.

[Contact Us](#)



## State-of-the-art in the industrial implementation of protective relay

The paper summarizes the operating principles of relay applications, the available measurements used by relays and the protection schemes for various faults that occur frequently in

[Contact Us](#)

## Installing and Maintaining Protective Relay Systems

Ensuring that protection systems operate reliably is crucial, and a good preventive maintenance program ensures that protection and relay systems function properly without causing additional problems.

[Contact Us](#)



## Distribution Automation Handbook

The selectivity diagram is a set of specific time/current curves which shows all the time/current curves, that is, the operating characteristics of the relays of the concerned chain of protection relays.

[Contact Us](#)



## Types of Protective Relays

This article covers various types of protective relays, such as overcurrent, directional, and differential relays, highlighting their operating characteristics and applications

[Contact Us](#)



## Principles and Characteristics of Distance Protection

Distance relays characteristics may be Mho, Quadrilateral, Offset Mho, etc. In the case of the quadrilateral characteristic or long reaching mho

[Contact Us](#)

## Contact Us

---

For datasheets, pricing, or custom fiber access solutions, please visit:  
<https://frindel.es>