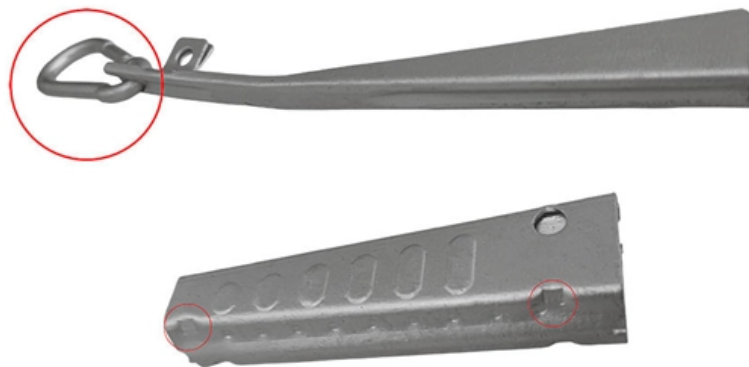


What are the different configurations of the core switch





What are the different configurations of the core switch



WORLD WIDE WEB JOURNAL Home

will open to start the export process. The process may take but once it finishes a file will be downloadable from your browser. You may continue to browse the DL while the export process is in

[Contact Us](#)

What Is a Core Switch in a Network?

Core switches are optimized for high-speed routing and forwarding, operating at Layer 3 of the network model. They feature high-speed uplinks but have a lower port density because they

[Contact Us](#)



Understanding Core Switch: What It Is and How to

In the realm of system networking, three key types of switches are frequently mentioned: access switches, aggregation switches, and core switches.

[Contact Us](#)



RPG Maker Forums

Hier sollte eine Beschreibung angezeigt werden, diese Seite lässt dies jedoch nicht zu.

[Contact Us](#)



What Is the Core Switch?

The core switch is the central, high-capacity switching point within a network, responsible for forwarding data between different parts of the network and often connecting to multiple

[Contact Us](#)

Core Switch vs Normal Switch: Key Differences Explained

While both core and normal switches play crucial roles in maintaining efficient data flow, their functionality and applications vary significantly. This guide

[Contact Us](#)



FortiSwitchOS Switching Reference Architecture Guide

These reference architectures offer examples of the best way to configure your network for each use case. The Fortinet solutions in this guide make it easier to configure these challenging topologies.

[Contact Us](#)





What is a Core Switch , Functions and Difference over Normal Switch

What is a core switch and how it works? This article builds the basics of this kind of switch for the ones who don't know anything about it. What is a Core Switch? It is a powerful

[Contact Us](#)



What is Core Switch and How to Choose?

Discover what a core switch is and learn how to choose the right one for your network. Explore key features in selecting a core layer switch. Make

[Contact Us](#)

What Is a Core Switch in Networking?

Unlike access switches, which connect directly to end-user devices, the core switch focuses on aggregating and routing traffic between other

[Contact Us](#)



What Is a Core Switch?

A core switch is the backbone of a large-scale network, designed to handle massive volumes of traffic with ultra-low latency and maximum reliability. Sitting at the top of the hierarchical model, core

[Contact Us](#)



How to Choose the Right Core Switch for Enterprise

Learn how core switches for enterprise networks and LAN campus networks function in the hierarchical internetworking model and how to choose

[Contact Us](#)



What is a Core Switch , Functions and Difference over Normal Switch

This type of switch also handles external network traffic. The core-type layer is made up of multiple core switches that operate at high speeds. Network aggregation switches, on the other

[Contact Us](#)

Core Switch Explained: Key Functions and Benefits

Core switches are crucial in effective network design. They stand at the network's heart, speeding up data transfer across different segments. Unlike edge switches, core switches are the

[Contact Us](#)



Core Switch Configuration Guide

This document outlines the configuration steps for a core switch in a server room, including connecting via serial cable, assigning hostnames, creating user

[Contact Us](#)



What Is a Core Switch? Network Backbone Architecture Guide

Discover what a core switch does in a 3-tier network model. Learn about ASIC routing, collapsed core vs dedicated core topologies, and SMB sizing guides.

[Contact Us](#)



Core Switch vs. Distribution Switch vs. Access Switch

What is a Core Switch? A core switch is the primary switch installed at the backbone of a layered or hierarchical network. These data switches are responsible for

[Contact Us](#)

What Is a Core Switch in Networking?

What Is a Core Switch in Networking? Understanding the Backbone of Your Network A core switch in networking serves as the high-capacity

[Contact Us](#)



Strengthen door locks
More durable and aesthetically pleasing



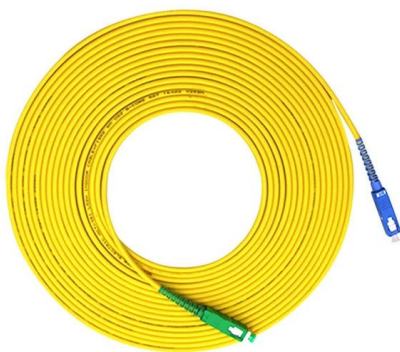
Grounding screw
More aesthetically pleasing and safer



Removable hinges
Make operation more convenient



Sealing strip
Dustproof and waterproof



What is a Core Switch?

What is a Core Switch? A Deep Dive A core switch is the backbone of a network, providing high-speed switching for data packets between different network segments; essentially, it's

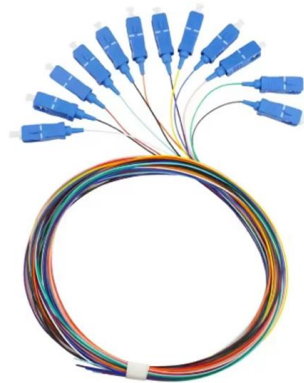
[Contact Us](#)



Native AC Solution: Core Switches Function as the Gateway for Wired

Configure CSS on core switches and stacking on aggregation switches, and configure MAD and uplink and downlink Eth-Trunk interfaces on the switches. For details, see Typical CSS and Stack

[Contact Us](#)



Core Switches and Normal Switches: A Practical

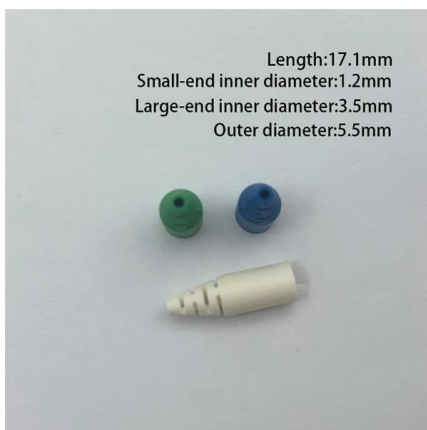
In modern network infrastructure, switches play a pivotal role in connecting devices and facilitating data transfer. However, not all switches are

[Contact Us](#)

Understanding the Core Switch: Key Differences and Uses

Explore the core switch's role as the backbone of your network. Discover key differences, uses, and insights into layer 3 core switch technology.

[Contact Us](#)



Markdown Live Preview

Markdown syntax guide Headers This is a Heading h1 This is a Heading h2 This is a Heading h6 Emphasis This text will be italic This will also be italic This text will be

[Contact Us](#)



Contact Us

For datasheets, pricing, or custom fiber access solutions, please visit:
<https://frindel.es>