

Waterproof connector box 24-core overseas warehouse





Waterproof connector box 24-core overseas warehouse



Waterproof 24 Cores Terminal Box Fiber Box Fdb Nap Box

Introducing the Waterproof Lock 8/12 Cores Terminal Box, crafted from high-quality ABS material for superior durability and performance in various environments. This fiber box is designed to protect

[Contact Us](#)

NECERO 24 Core Fiber Optic Cable Connector Box

NECERO horizontal two-ended fiber optic cable connector box 24 core. Ideal for FTTH, with ABS material, IP68 waterproof, and more than 25 years lifetime., Alibaba

[Contact Us](#)



Odf Fiber Optic Terminal Box 24 Core Outdoor

Product Description Odf Fiber Optic Terminal Box 24 Core Outdoor Waterproof

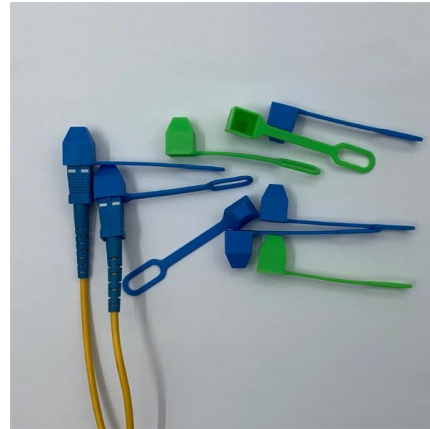
[Contact Us](#)



24core IP66 Waterproof Fiber Optic Terminal Box for Outdoor Use

The Fiber Optic Terminal Box is an essential component used as a termination point for the feeder cable to connect with drop cables in FTTx communication network systems.

[Contact Us](#)



M12 Waterproof Connector Box PC with Intel® Kaby

M12 Waterproof Connector Box PC with Intel® Kaby Laby-U Series Processor for Ultra Low-Power & Fanless Solution

[Contact Us](#)



24 Core Fiber Optic Termination Box/ Junction Box

Product Description FTKS-1805-16F 24 core Fiber Optic Termination Box/ Junction box 1. Product Description This box is used as a termination point for the feeder

[Contact Us](#)



Fiber Termination Box, 24 Core 1 in 1 Out Horizontal Fiber

Enclosure of the fiber cable connection box is rated IP68, ensuring it is waterproof and dustproof outdoors, effectively protecting the internal fiber connectors in harsh weather conditions Fiber

[Contact Us](#)





IP65 Waterproof Fiber Optical Distribution Box 24 Port

The 24 Core Fiber Optical Distribution Box With a maximum capacity of 24 cores, it has the capability to splice up to 72 cores in total. It is a versatile and highly

[Contact Us](#)



FTTH Outdoor Termination Box 24 Core Optical Fiber

The FDB is made of high strength materials,UV resistance,waterproof,maximum capacity up to 24cores,with perfect space design,a variety of PLC splitter can be

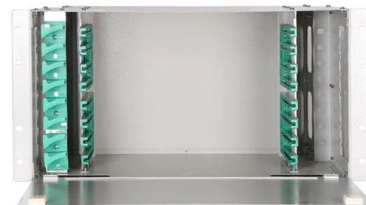
[Contact Us](#)



24 Core Fiber Optic Distribution Box

JUNPU 24 Core fiber optic distribution box is made with PC+ABS material. The equipment is used as a termination point for the feeder cable to connect with drop cable in FTTx communication network

[Contact Us](#)



24 core waterproof fiber optic termination box

24 core waterproof fiber optic termination box Wirenet Telecom Technology Co,Ltd; 6.12K subscribers Subscribe

[Contact Us](#)





VEVOR NEMA Steel Enclosure, 24 x 24 x 8" NEMA 4X

VEVOR NEMA Steel Enclosure, 24 x 24 x 8" NEMA 4X Steel Electrical Box, IP66 Waterproof & Dustproof, Outdoor/Indoor Electrical Junction Box, with Mounting

[Contact Us](#)



Gelbox Provides Protection from Moisture , WAGO GB

The WAGO Gelbox is a compact box pre-filled with silicone-free gel. The Gelbox is available in six sizes and provides IPX8 levels of moisture protection for WAGO's

[Contact Us](#)

24-Core FTTH Outdoor Waterproof ABS Terminal Wall Mounted Fiber

Brief Introduction:Outdoor Wall Mounted equipment terminal box 24 core Fiber Optic Distribution Box With Adapter is a multifunctional fiber optic terminal box that combines splice trays, adapters, and



[Contact Us](#)



48 Core FTTH Wall Mounted Distribution Box

48 Core FTTH Wall Mounted Distribution Box Wall Mounted Fiber Optic Distribution Box 24 Fiber Ports is for indoor use and can accommodate up to 48 fiber

[Contact Us](#)



Waterproof Connector Fiber Optic Distribution Box ODP

This fiber optic distribution box are used in the terminal link of FTTH access system, specially suitable for pole and wall mounting application the optical

[Contact Us](#)



Junpu Waterproof 24 Core Fiber Optic Termination Box

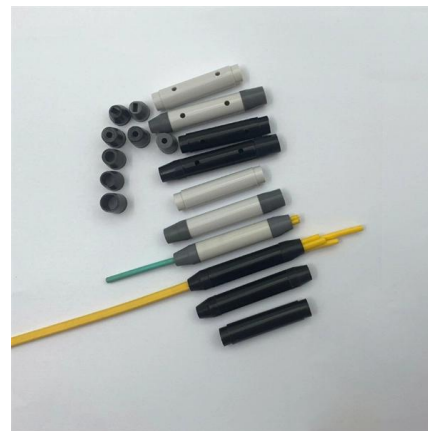
JP-I2-240A fiber access termination box is able to hold up to 24 subscribers. It is used as a termination point for the feeder cable to connect with drop cable in

[Contact Us](#)

24 Core IP65 Outdoor Fiber Optic Terminal Box

IP65 waterproof 24 core fiber optic terminal box with blockless splitter and 24 ports capacity for FTTH applications.

[Contact Us](#)



Waterproof 24-core Optical Fiber Connector Tray FTTH NAP Optical

Other attributes Model Number YY-H017 Place of Origin Zhejiang, China Brand Name YUANYI Use FTTH Systems Warranty Time 5-10 years Network Wireless Lan, bluetooth, GPRS, wifi, 4g, GSM,

[Contact Us](#)



Waterproof connectors IP68

The waterproof inline connectors are intended for use in permanent electrical installations which require a full protection against damp and water. The panel

[Contact Us](#)



Weipu - Industrial Waterproof Connectors & Enclosure

From solar farms to wind power systems, weipu connectors and enclosures are built to withstand harsh outdoor environments. Our waterproof and UV-resistant

[Contact Us](#)

Premium Waterproof Terminal Box for 24 Cores

Our main product is Fiber Optic Connector, Fiber Optic Adapter, Fiber Optic Attenuator, Fiber Optic Patch Cord, and Fiber Terminal Box. Except that, we have very good prices for part of the fiber tools!

[Contact Us](#)



Grid Cable for marine and offshore applications

Waterproof Lock 16/24 Cores Terminal Box ABS Fiber Box Fdb Ftb

Introducing the Waterproof Lock 8/12 Cores Terminal Box, crafted from high-quality ABS material for superior durability and performance in various environments. This fiber box is designed to protect

[Contact Us](#)



FTTX Waterproof Fiber Splice Enclosure for 12/24/48 Cores

FTTX 12/24/48cores Strengthen PC 4 trays 24 core/tray Fiber Splice Waterproof Enclosure Box
Description: Optical splice closures are used to distribute, splice, and store outdoor optical cables

[Contact Us](#)



Contact Us

For datasheets, pricing, or custom fiber access solutions, please visit:
<https://frindel.es>