

Verticality of the distribution box installation



✓ 50KW/100KWH

✓ HIGHER POWER OUTPUT
IN OFF-GRID MODE

✓ CONVENIENT OPERATION
& MAINTENANCE

✓ PRE-WIRED



Overview

According to the "Code for Acceptance of Construction Quality of Building Electrical Engineering" GB50303-2002, the vertical distance between the bottom surface of the fixed stainless steel enclosure ip67 and the ground should be greater than 1.7 meters) high makes it easily accessible without the need to bend or stretch excessively. It takes the incoming power and safely distributes it to different circuits throughout your building. The installation requirements and specifications of Distribution box involve many aspects, including site selection, fixing method, wiring specifications and safety protection.



Verticality of the distribution box installation



Notes for Installation of Distribution Box

In order to ensure the beauty of decoration, it is necessary to install the distribution box vertically and horizontally into the wall and keep the 5-6mm gap edge.

[Contact Us](#)

Distribution Box Installation: A Complete Guide to Safe

The distribution box, often referred to as a breaker box, fuse box, or electrical panel, is a critical component of any electrical system. It acts as the central hub for

[Contact Us](#)



Installation Mode Of Distribution Box

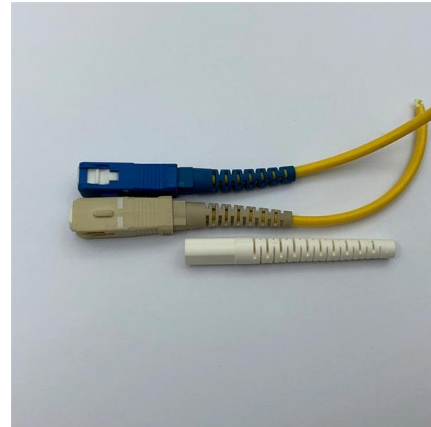
2)The distribution box shall be installed firmly, horizontal and vertical, and the vertical deviation shall not be greater than 3mm; During concealed

[Contact Us](#)



Distribution Box Installation: A Complete Guide to Safe

In this comprehensive guide, we'll cover everything you need to know about distribution box installation, from the basics to the step-by-step installation



The Complete Guide to Distribution Box: Installation, Types & More

High-usage commercial and industrial installations may require more frequent inspections based on operating conditions and manufacturer recommendations. Can I add circuits to an existing

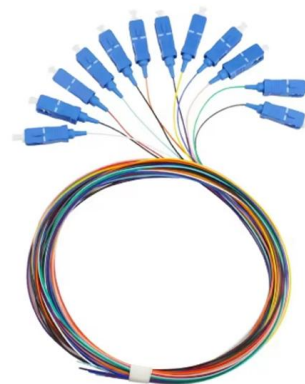
[Contact Us](#)



How to Improve the Installation Quality of Distribution Boxes

The installation of the distribution box must be level and stable. According to inspection standards, the permissible vertical deviation for boxes with a height less than 50cm is 1.5mm, and for boxes 50cm

[Contact Us](#)



How to Install a Cable Distribution Box Safely and

In modern electrical systems, cable distribution boxes (also known as electrical distribution boxes or distribution boxes) play a crucial role as the key

[Contact Us](#)





Distribution boards components

Distribution boards (generally only one in residential premises) usually include the meter (s) and in some cases (notably where the supply utilities impose a TT earthing system and/or tariff

[Contact Us](#)



How to determine the size, installation method and

9) The wood brick and iron parts needed for the installation of the distribution board need to be buried in advance, and the exposed distribution box should be fixed

[Contact Us](#)

How to confirm whether the installation location of the

The electrical distribution box plays a vital role in the power system. It is responsible for distributing electricity to various circuits and equipment.

[Contact Us](#)



"Guidelines for Household Distribution Box Specifications and

The depth should match the thickness of the box plus any additional plastering. Concrete can be used to secure the box in place after installation. Leveling: It is crucial to ensure that the box

[Contact Us](#)





How to Install a Cable Distribution Box Safely and

This article provides a detailed overview of the entire process of installing a distribution box, from pre-installation preparation to post-installation

[Contact Us](#)



What is the Ideal Installation Height for a Distribution Box

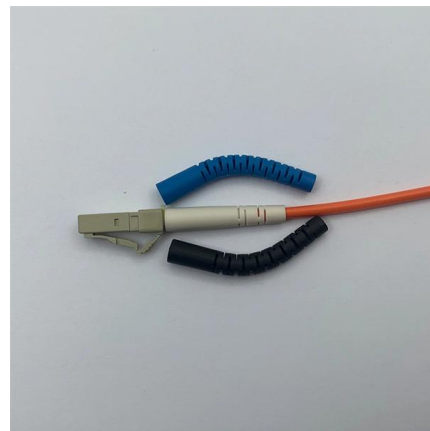
Follow height rules when installing a distribution box. Wall-mounted boxes should be 4.5 to 5.5 feet high. This height makes it easy to reach without bending or

[Contact Us](#)

Small distribution box installation steps

The steps to install a small distribution box include selecting a suitable location, installing the base, placing the distribution box, connecting the

[Contact Us](#)



Installation requirements for distribution boxes

Installation of closed or explosion-proof electrical facilities; distribution box electrical components, meters, switches and lines should be arranged neatly, firmly installed, easy to operate.

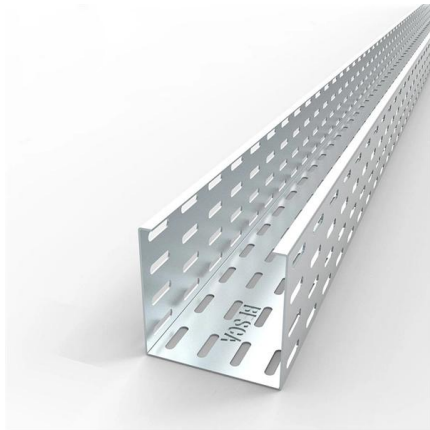
[Contact Us](#)



Installation process of distribution box

1. Distribution cabinet shall be placed on the foundation section steel one by one according to the layout of construction drawing. The verticality adjustment of the

[Contact Us](#)



Installation points of household distribution box

The distribution box of household distribution box should not be installed too high. Generally, the installation elevation is 1.8m to facilitate operation; the electric pipe

[Contact Us](#)

How to Install a Distribution Box--A Comprehensive

Distribution Box Installation: Put the distribution box on the installation surface, and align the position of the expansion bolts and tighten the screws. This

[Contact Us](#)



Key Points Of Distribution Box Installation

1. The power distribution system at the construction site shall implement hierarchical power distribution, which shall be equipped with a general distribution box (or distribution room), a distributio

[Contact Us](#)

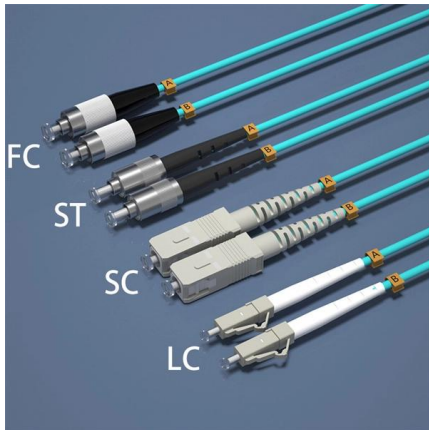
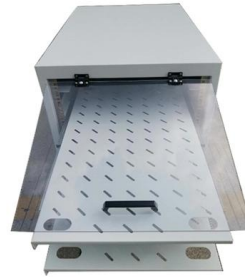




Requirements And Specifications For Installation Of

The bottom edge of the distribution box is usually between 1.5 meters and 1.8 meters above the ground, which is convenient for operation and

[Contact Us](#)



The installation requirements for the distribution box

Introduction Understanding The Components of A Distribution Box Selecting The Right Distribution Box Site Preparation and Location Requirements Electrical Connections and Wiring Compliance with Standards and Regulations Conclusion Proper installation of a distribution box isn't just a technical requirement. It's a vital step in ensuring the safety and efficiency of your entire electrical system. Following best practices reduces the risk of electrical fires, power outages, and other hazards, protecting your property and keeping everyone safe. If you're looking for a reliable, See more on eabel Published: Feb 7, 2025 goodeelec

Installation Height And Location Selection Requirements For Ground

According to the "Code for Acceptance of Construction Quality of Building Electrical Engineering" GB50303-2002, the vertical distance between the bottom surface of the fixed stainless steel

[Contact Us](#)

Cautions and Requirements for Installation of

Distribution box is a low-voltage distribution device which assembles switchgear, measuring



instruments, protective appliances and auxiliary equipment in a closed

[Contact Us](#)



Grounding System Installation Standards for Distribution Boxes and

By understanding the deeper principles behind grounding standards, avoiding common installation pitfalls, and insisting on certified materials from reputable suppliers, you're not just following

[Contact Us](#)

Contact Us

For datasheets, pricing, or custom fiber access solutions, please visit:
<https://frindel.es>