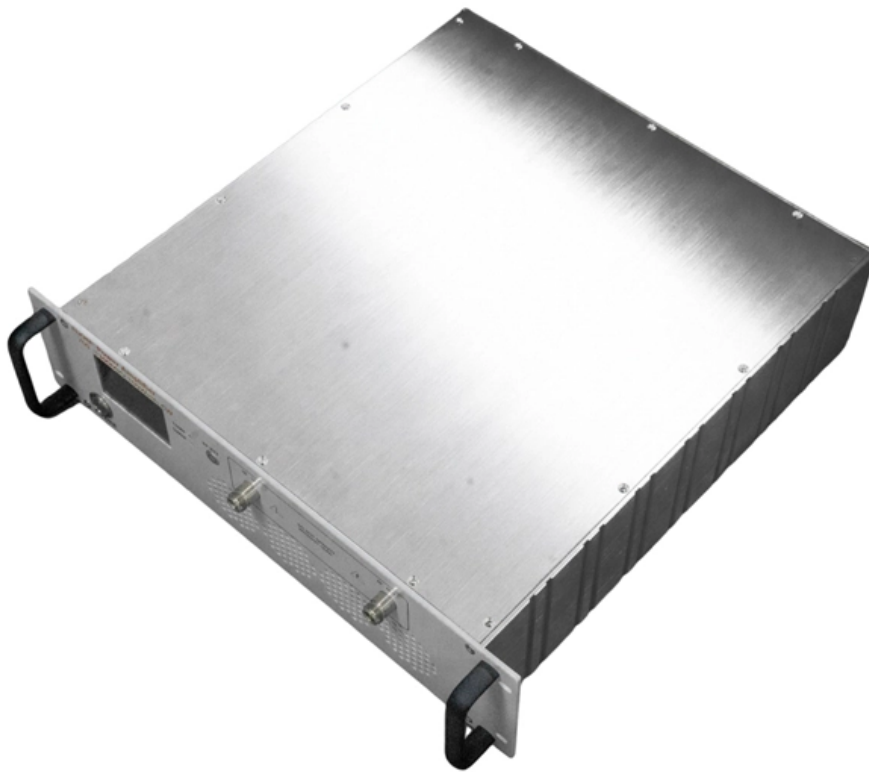


Upper and lower cable entry holes of the distribution box





Upper and lower cable entry holes of the distribution box



How to Install a Distribution Box--A Comprehensive

The best height for installing residential distribution boxes is 1.5 meters above the ground, while for industrial distribution boxes, the height

[Contact Us](#)

Wiley Online Library , Scientific research articles, journals, books

Hier sollte eine Beschreibung angezeigt werden, diese Seite lässt dies jedoch nicht zu.

[Contact Us](#)



What Is an Electrical Distribution Box? A Complete Guide

An electrical distribution box routes power, prevents overloads, and keeps wiring organised--essential for safe, efficient home and

[Contact Us](#)

The installation requirements for the distribution box

Conduct a detailed survey of the installation site to determine the installation location of the cable distribution box. The installation location should

[Contact Us](#)



How to determine the size, installation method and

9) The wood brick and iron parts needed for the installation of the distribution board need to be buried in advance, and the exposed distribution box should be fixed

[Contact Us](#)

Best practices for Switch box/junction

Bringing the cables to the box CTC does not recommend putting holes in the top of any enclosure due to access and moisture con-
Figure 1. Incorrect cerns.(Figure 1) conduit entry.

[Contact Us](#)



A Step-by-Step Guide to Wiring an Electrical Panel Box

Find out how to properly wire an electrical panel box with a comprehensive diagram and step-by-step instructions.

[Contact Us](#)



Distribution Boxes Types - The Complete Guide

The power distribution boxes deliver electricity from the main electrical main to other circuits. Several distribution boxes are designed for specific use in

[Contact Us](#)



Best practices for Switch box/junction

Because of this, when possible, conduit should only be brought into an enclosure through the bottom of the box, even if it means running the cable around the entire side of the enclosure.

[Contact Us](#)



Wiring requirements of distribution box

The opening position of incoming and outgoing cables of the distribution cabinet shall be reserved by the supplier according to the size. Close after cable laying.

[Contact Us](#)



Distribution Box and Selection Guide

Distribution Box Selection Guide This guide provides information on how to select the appropriate Distribution Box for Electric project. If you have any

[Contact Us](#)





Cable Entry Systems Case Study with OneStop: FRCS1-SA-ENG

Cable Entry Systems require only a single hole to be drilled instead of multiple holes. As a result, OneStop Controls not only saved time on installation, but also significantly reduced the space

[Contact Us](#)



The installation requirements for the distribution box

Learn how to install a distribution box safely and correctly. Covers wiring, placement, standards, and expert tips for a compliant setup.

[Contact Us](#)

A Definitive Guide To Distribution Boxes

Power distribution boxes are beneficial because they eliminate the requirement for each output device to be connected directly to the power source. As a result, there's no reason to utilize

[Contact Us](#)



Understanding Distribution Boxes: Your Guide to Power

Weatherproof Distribution Boxes These serve specific outdoor purposes, with rain, dust, and extreme temperatures sealed shut, protecting any

[Contact Us](#)



Comprehensive Understanding of Distribution Box

Using a distribution box that meets safety rules gives peace of mind. Always pick one with proper certifications for your area. Energy efficiency and control In 2025, saving energy is very important. A

[Contact Us](#)



[directory-list-2.4.txt/directory-list-2.4.txt at main](#)

Customer stories Events & webinars Ebooks & reports Business insights GitHub Skills

[Contact Us](#)

How to Improve the Installation Quality of Distribution Boxes

Wire entry holes must be smooth and burr-free; metal panels should be fitted with insulating bushings. The goal is firm, precise, and aesthetically pleasing connections.

[Contact Us](#)



Designing and Building an Electrical Panel Part 2:

Cables can enter through the top or bottom. For bottom entry, the floor can incorporate a trench or false floor, which is often simpler since it

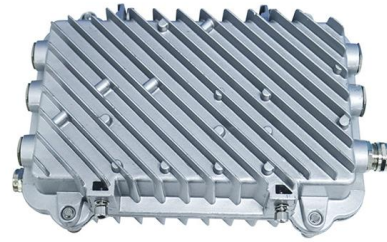
[Contact Us](#)



A Visual Guide to Cable TV House Wiring

What are the components of a cable TV house wiring diagram? The components of a cable TV house wiring diagram include the main cable line coming into the house,

[Contact Us](#)



Vertiv NetSure External Distribution Box (EDB)

The Vertiv™ NetSure™ External Distribution Box (EDB) offers both DC distribution and fiber distribution in a single convenient enclosure to meet your macro base station needs at 5G cell sites.

[Contact Us](#)

Contact Us

For datasheets, pricing, or custom fiber access solutions, please visit:
<https://frindel.es>