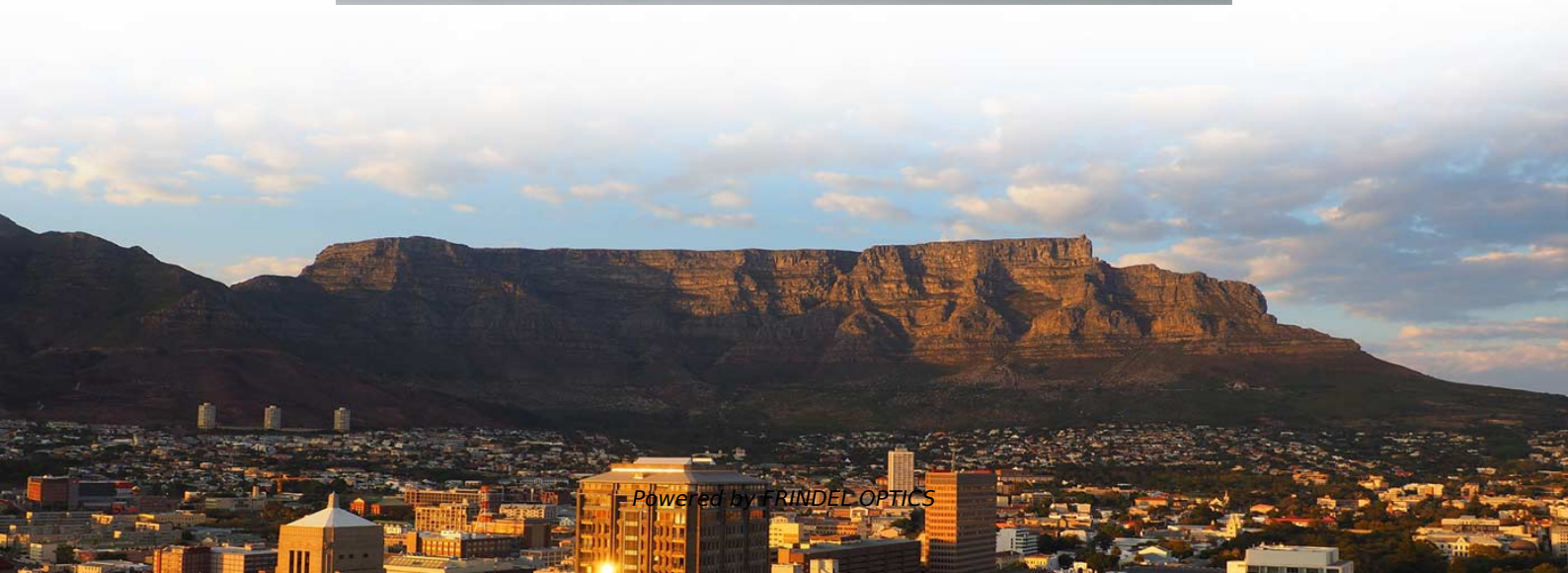


Under-side wiring conduit of distribution box





Under-side wiring conduit of distribution box



The Complete Guide to Distribution Box: Installation, Types & More

What's the difference between a distribution box and a sub-panel? A distribution box typically refers to the main electrical panel that receives power from the utility service. A sub-panel is

[Contact Us](#)

Underground Residential Distribution Layouts

Distribution Layouts Distribution circuits to residential areas are similar to overhead designs, except the installation is underground. Primary mains, with take-offs, are installed to which are connected the

[Contact Us](#)



How to Install Underground Electric Conduit Up to Code

In this method, the conduit can be as shallow as 6 inches deep, and the individual conducting wires inside should have a "W" labeling to indicate they

[Contact Us](#)



Wiring Best Practices: A Guide to Distribution Boards

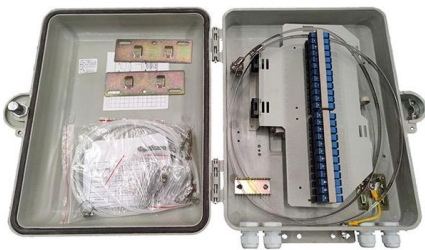
As the heartbeat of any electrical system, distribution boards play a crucial role in ensuring a safe and efficient power supply. Whether you're a homeowner,



How to Wire a Home Distribution Box

The above mentioned electrical wiring accessories and protective devices are used to control and distribute electric supply (safely to connected

[Contact Us](#)



Explaining NEC Article 230 on Service Entrance Conductors

Article 230 of NEC explains the installation of service conductors and equipment that bring electrical power from the utility supply to a building or structure.

[Contact Us](#)



How To Wire A Distribution Board (DB Board): A Step-By-Step Guide

A distribution board (DB board), also known as a fuse box or breaker panel, is essential for managing electrical circuits in a building. It distributes electrical power from the main supply to

[Contact Us](#)

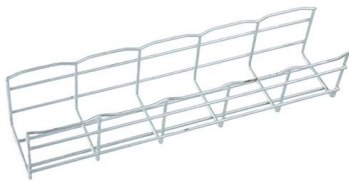




What engineers should know about using conduits in

Examples of these circuits include distribution cable leaving the substation and wind farm collector circuits entering the substation. This

[Contact Us](#)



How To Install An Underground Electrical Junction Box

Working outside on electrical stuff sounds messy, especially if you are dealing with underground wiring. The thought of digging into the dirt, setting

[Contact Us](#)

A Step-by-Step Guide to Wiring an Electrical Panel Box

Find out how to properly wire an electrical panel box with a comprehensive diagram and step-by-step instructions.

[Contact Us](#)



Underground Electrical Conduit Installation Guide

Master underground electrical conduit installation with NEC code requirements, burial depths, and material selection. Expert guide for safe, compliant systems.

[Contact Us](#)



Underground Residential Distribution Layouts

Figure 2 illustrates a typical underground setup of a conduit system. Distribution circuits to residential areas are similar to overhead designs, except the installation is underground.

[Contact Us](#)



Size determination, installation method and wiring mode

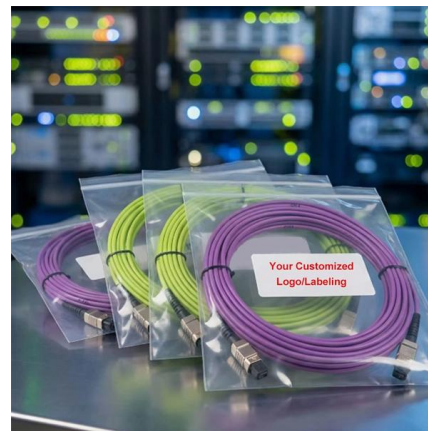
The distribution box is the central hub of the home circuit and the general control of our daily power consumption. It is an indispensable electrical equipment. If there

[Contact Us](#)

Underground Pull Box Installation: A Step-by-Step Guide for Safe

But installing a PVC underground pull box for your conduit system is a manageable DIY task when you understand the key considerations and follow the right steps. Learn how to create a safe, accessible,

[Contact Us](#)



Underground Installation Guide

All MTE infrastructure including but not limited to conduits, manholes, box pads, and pull boxes must have a minimum horizontal separation of 36" from gas and water lines.

[Contact Us](#)





Specification for Installation of Underground Conduit Systems

Conduit terminating in side walls of junction and transformer boxes shall leave at right angles to the box wall for a minimum distance of 1 meter before being formed into the trench configuration.

[Contact Us](#)



00 cover com_tech

Temperature Variations Trefoil or Triangular Cable Configuration Flat Conductor Configuration, Maintained Spacing Direct-Buried Duct Bank Installation Using Rigid Nonmetallic Conduit Single

[Contact Us](#)

Understanding Distribution Boxes: A Comprehensive Guide

A distribution box, also known as a power distribution box or electrical distribution box, is used to distribute electrical power safely to multiple

[Contact Us](#)



Distribution Box Wiring Steps

?Wiring and Binding? ?Wiring Direction?: Wiring between the main circuit breaker and each branch circuit breaker in the box generally goes on the left, and

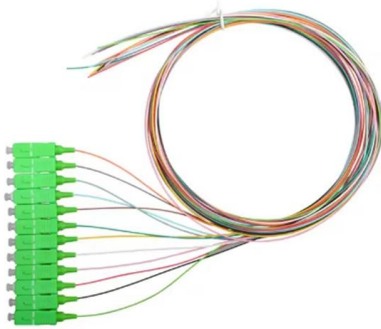
[Contact Us](#)



1-03-FR-10

4.3.6 Underground cable PD box The primary function of a cable PD box is to provide a waterproof, accessible, enclosure for electrical wiring connected to PD sensors at cable joints and terminations.

[Contact Us](#)



Microsoft Word

For example, if the distribution side of the junction box has one 1-1/4" distribution conduit and three 1" distribution conduits, the total distribution-side width would be $6" + 2" + 2" + 2" = 10"$.

[Contact Us](#)

Underground Electrical Conduit: A Comprehensive

Protect underground wiring. This comprehensive guide covers everything you need to know about underground electrical conduit for safe,

[Contact Us](#)



Specifications for Electrical Underground Residential Distribution

The conduits must be installed to ensure that the total maximum bending radius for the primary cable does not exceed 9" (angle primary conduit whenever possible).

[Contact Us](#)

What Are Underground Conduits?



Everything You Need

Underground conduit systems are concealed beneath the ground surface, safeguarding electrical wiring from external elements and minimizing

[Contact Us](#)



Contact Us

For datasheets, pricing, or custom fiber access solutions, please visit:
<https://frindel.es>