

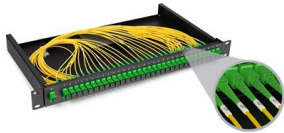
Türkiye Door-to-Door Transport of Optical Switches LPO





Türkiye Door-to-Door Transport of Optical Switches LPO

Optical Interconnect Technology Analysis: LPO, NPO, CPO

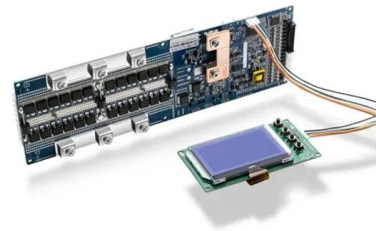


Exploring optical interconnects for AI data centers: LPO for low-power, short-distance links, NPO for high-density, near-package connections,

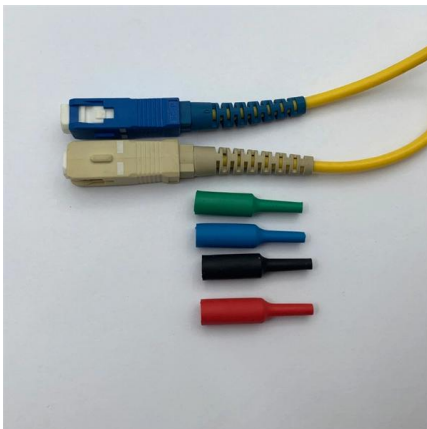
[Contact Us](#)

CPO and LPO Technical Analysis

CPO vs LPO technical analysis: CPO delivers ultra-low power & high performance yet challenges maintenance; LPO balances power efficiency with pluggability.



[Contact Us](#)



LPO: Leading Low-Power 800G Optical Communication

LPO differs from traditional optical modules by using linear drive and pluggable design, supporting hot-swappability to simplify fiber cabling and

[Contact Us](#)

Door-to-Door Transportation Between Europe and Türkiye

The primary challenge in door-to-door transport from Germany to Türkiye is managing a complex multi-modal supply chain that must seamlessly transition between road and maritime or rail



Linear Pluggable Optics - Streamlining Data Center

Linear pluggable optics eliminates this DSP, leveraging the powerful DSP capabilities of the switch ASIC to handle signal processing. This direct drive

[Contact Us](#)



LPO Transceiver: Embracing the Future of Linear-drive

The Linear-drive Pluggable Optics (LPO) transceiver with linear-drive technology has advantages in power consumption, cost and latency.

[Contact Us](#)



Optical Interconnect Technology Analysis: LPO, NPO,

In the LPO architecture: The transmitter uses a high-linearity driver chip to directly drive the optical modulator, converting the electrical signal into an optical signal.

[Contact Us](#)





LPO vs CPO: Which Will Dominate the Data Center

In the rapidly evolving landscape of data center optical interconnects, the competition between LPO (Laser Phased-locked Oscillator) and CPO

[Contact Us](#)



Linear Pluggable Optics_V2

By design, LPO offers a scalable path to reconciling high data rates with low power consumption for pluggable modules, while CPO enables direct integration of photonics onto the switch IC, thereby

[Contact Us](#)



LPO-MSA

The focus of the LPO MSA is to specify module and network equipment level interoperability requirements that span both electrical and optical technologies. Starting at 100 Gb/s per lane, the

[Contact Us](#)

High Quality Aluminum Housing with Compact Size

- Sturdy and Durable
- Anti-corrosion



Introducing Linear Pluggable Optics (LPO)

This article gives a short insight into how LPO technology works, how it differs from DSP-based optics, the scenarios where it offers the most advantages, and the

[Contact Us](#)



Linear Drive Pluggable Optics

Linear Drive Pluggable Optics Linear Drive Pluggable Optics (LPOs) have gained tremendous attention during 2023 and this document attempts to de-mystify the terminology. The focus is on 400G and

[Contact Us](#)



Linear Pluggable Optics - An Overview

Industry Trends LPO as technology has seen considerable traction in the industry with several designs and solutions proposed over the years. OFC 2024 with 4 parallel channels. The system, as is

[Contact Us](#)



Revolutionizing Data Centers with a Linear Pluggable Optic (LPO)

One of the most groundbreaking network innovations driving transformations of data centers in 2025 is Linear Pluggable Optics (LPO)--a Digital Signal Processor (DSP)-free optical

[Contact Us](#)



LPO MSA releases Linear Pluggable Optical Modules

Mark Nowell, LPO MSA Chair. This specification defines the necessary optical and electrical requirements for a robust ecosystem of LPO

[Contact Us](#)





Understanding LPO Transceivers in Modern Data Centers

LPO transceivers cut power use, lower latency, and boost reliability in data centers, making them ideal for high-speed, energy-efficient optical links.

[Contact Us](#)



Linear-drive Pluggable Optics: A Game-Changing Technology in

To reduce power consumption and cost while meeting the demands of high-speed, high-density optical communication connections, as well as the need for optical network flexibility and scalability, the

[Contact Us](#)

What is LPO Transceiver Module?

What is LPO Technology and its Prospects? LPO (Linear-drive Pluggable Optics) is a transceiver packaging technology. This technology is the

[Contact Us](#)



FS Community

Hier sollte eine Beschreibung angezeigt werden, diese Seite lässt dies jedoch nicht zu.

[Contact Us](#)



CPO vs LPO: A Comprehensive Comparison for Next

Executive Summary CPO (Co-Packaged Optics) and LPO (Linear Drive Pluggable Optics) represent two revolutionary approaches to addressing

[Contact Us](#)



FAQ of LPO (Linear Pluggable Optics)

Q: What is Linear Pluggable Optics (LPO)? A: Linear Pluggable Optics refers to a solution that utilizes a low-power pluggable module that does not incorporate a DSP chip. The signal path from end to end

[Contact Us](#)

LPO Transceiver: Embracing the Future of Linear-drive

The increase in energy consumption of optical communication devices puts a major burden on the overall use of energy and costs for the whole

[Contact Us](#)



Why HPC Chip Designers Are Turning to Linear Pluggable Optics

LPO vs. Co-Packaged Optics (CPO): Competing Approaches While Co-Packaged Optics (CPO)--where optical components are directly integrated inside the switch or HPC chip

[Contact Us](#)



What is LPO Optical Transceiver Module?

Enterprise Networking Solutions LPO optical transceiver modules are used in enterprise networking solutions to support high-speed connectivity

[Contact Us](#)



What are linear pluggable optics?

Learn how linear pluggable optics (LPOs) reduce power use, cost and latency by eliminating the DSP and enabling efficient AI, ML and GPU intra-data-center links.

[Contact Us](#)

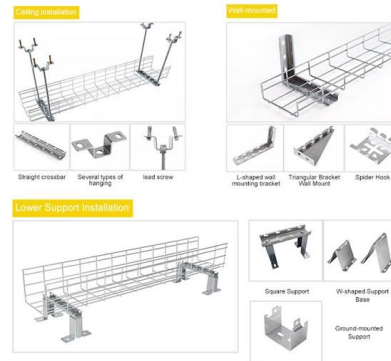
Google Çeviri

Google'in ücretsiz olarak sunulan hizmeti, İngilizce ile 100'den fazla dil arasında kelime, ifade ve web sayfalarını anında çevirebilir.

[Contact Us](#)



INSTALLATION METHOD



Data Center Optical Interconnects: LPO and CPO

The future of data center optical interconnects will likely see both LPO and CPO playing significant roles, but their dominance will depend on specific use cases

[Contact Us](#)



Direct-Drive Electro-Optical Tech for 800G+ , Synopsys IP

Learn how Direct-Drive Electro-Optical Interfaces are transforming datacenters, enabling efficient data transfer and processing for 800G and beyond.

[Contact Us](#)



Contact Us

For datasheets, pricing, or custom fiber access solutions, please visit:
<https://frindel.es>