

Two types of optical transmission modules for OTN





Overview

OTN defines a precise layered structure for transporting and managing data: Optical Payload Unit (OPU): Holds the client signal and ensures transparent mapping. Optical Data Unit (ODU): Adds overhead for performance monitoring, multiplexing, and protection. Function diagram 200 Gbit/s transponder/muxponder, aggregating 4x40 Gbit/s and 4x10 Gbit/s into a single 200 Gbit/s /OTU2C standard OTN trunk. Key technologies supported include 3G, 4G/LTE, IMS, Ethernet, OTN, FTTx, and various optical technologies (accounting for an estimated 35% of the portable fiber-optic test market). EXFO has a staff of approximately 1600 people in 25 countries, supporting more than 2000 telecom customers worldwide. In-depth coverage of DWDM, OTN, coherent optics, network design, and more — written by field engineers. Glossaries, troubleshooting guides, optical formulas, 80+ infographics, and ITU-T standards references. The diagram titled "The multiple layers of the OTN network" clearly illustrates how the various layers within the OTN framework work together to ensure smooth transport of different client signals, including Ethernet, Fiber Channel, MPLS/IP, and SDH/SONET.



Two types of optical transmission modules for OTN



Hollow Core Fiber (HCF): A Game-Changer for Optical

The world of optical communication is undergoing a transformation with the introduction of Hollow Core Fiber (HCF) technology. This revolutionary

[Contact Us](#)

Over 800G optical transceiver shipments to soar 2.6x by 2026

In addition to laser transmitters, optical modules need high-speed photodiodes (PDs) to receive signals. Leading vendors like Coherent, MACOM, Broadcom, and Lumentum are releasing

[Contact Us](#)



G.709 The Optical Transport Network (OTN)

The OTN framing structure makes the mapping of a variety of traffic types into OPUs possible, which includes SONET/SDH (STM-256) into OPU3, ATM cells into the OPU, and GFP frames into the OPU.

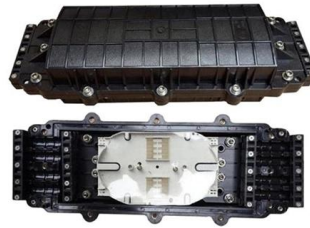
[Contact Us](#)

Optical Transport Network

The transmission system carries information on optical channels, which have certain protocols, such as SONET or OTN containers to encapsulate the user data and provide network management

[Contact Us](#)

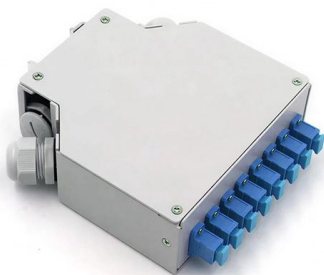




Cisco 400G QSFP-DD High-Power (Bright) Optical

The Cisco 400G QSFP-DD High-Power (Bright) Optical module multirate Ethernet/OTN variant shares the same HW platform (and so also the

[Contact Us](#)



Understanding the Multiple Layers of the OTN Network: ODU, OCh,

Learn how OTN layers -- ODU, OCh, and WDM -- enable efficient optical transport, multiplexing, and wavelength switching in telecom networks.

[Contact Us](#)



Small Form-factor Pluggable

Small Form-factor Pluggable Small Form-factor Pluggable connected to a pair of fiber-optic cables Small Form-factor Pluggable (SFP) is a compact, hot-pluggable

[Contact Us](#)





Complete Guide to Pluggable Optical Transceivers -

What are Pluggable Optical Transceivers?
Pluggable optical transceivers are compact, hot-swappable network interface modules that serve

[Contact Us](#)



Optical Transport Networking Solution , FS

FS OTN solution is designed to cost-effectively extend the optical link power budget for WDM solutions. It is fully managed, configured and monitored remotely as part of the network, via FMT management

[Contact Us](#)



MS-OTN

MS-OTN devices are OTN devices that support MPLS-TP packet service switching and transmission. In addition, MS-OTN devices also support SDH service switching and even PCM service access and

[Contact Us](#)



OTN (G.709) Reference Guide

ITU-T recommendation G.872, Architecture for the Optical Transport Network (OTN), defines two classes of OTN interfaces (see Figure 2.1- IaDI vs. IrDI interfaces).

[Contact Us](#)





How to interconnect the Gigabit RJ45 port with the SFP

Now Gigabit Ethernet has been popularized in a large area, and Gigabit Ethernet switches are also widely used in scenarios such as enterprise

[Contact Us](#)



The Internal Components and Structure of The Optical

This article will focus on the internals of the optical transceiver including the TOSA, ROSA and BOSA, and PCBA. Through this article, you will

[Contact Us](#)

Optical Transport Network (OTN):A comprehensive study

G.872 defines an architecture that is composed of the Optical Channel (OCh), Optical Multiplex Section (OMS) and Optical Transmission Section (OTS). It then describes the functionality

[Contact Us](#)



10G BiDi SFP+ Optical Module Interface Comparison: SC vs LC

With the increasing demand for high-speed optical communications in data centers, enterprise networks, and carrier networks, 10G BiDi SFP+ optical modules have become a

[Contact Us](#)



What Do You Know About Mobile Fronthaul Optical

The SFP/SFP+ industrial grade mobile fronthaul optical modules developed by NADDOD for 4G and 5G wireless communication base station application

[Contact Us](#)



Optical module

An optical module is a typically hot-pluggable optical transceiver used in high-bandwidth data communications applications. Optical modules typically have an electrical interface on the side that

[Contact Us](#)

What is SFP Port? Everything You Need to Know

What is an SFP port? The SFP port also refers to a Small Form-factor Pluggable port. It is a compact mechanical slot that accepts an SFP module

[Contact Us](#)



How to Choose Optical Modules for Switch Stacking?

To sum up, from the perspective of practicality and economy, DAC should be used for data transmission or switch stacking below 7 meters. AOC is used for data

[Contact Us](#)



What are OLT, ONU, ONT and ODN in PON?

Optical Distribution Network (ODN) is the PON physical layer that connects OLTs to ONUs or ONTs. Provides optical transmission media for

[Contact Us](#)



The Difference Between Single/Dual Fiber and

As fiber optic networks continue to evolve, selecting the right optical transceiver becomes increasingly important. Whether you're designing a short

[Contact Us](#)

Partnering With Lumentum and Coherent, Can Nvidia's

TradingKey - On Monday, March 2 local time, NVIDIA (NVDA) announced that it has entered into a deep strategic partnership with optical

[Contact Us](#)



Optical Transport Network (OTN) Explained: The

OTN defines a precise layered structure for transporting and managing data: Optical Payload Unit (OPU): Holds the client signal and ensures

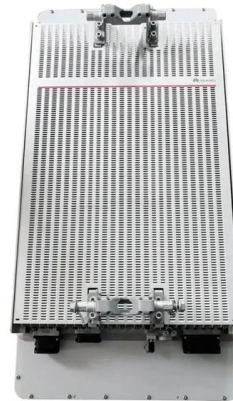
[Contact Us](#)



OTN Interfaces: OTU1 vs OTU2 vs OTU3 vs OTU4

This article compares OTN interfaces, specifically OTU1, OTU2, OTU3, and OTU4, highlighting the key differences between them. OTU stands for Optical Channel

[Contact Us](#)



ITU-T Rec. G.798.1 (04/2011) Types and characteristics of optical

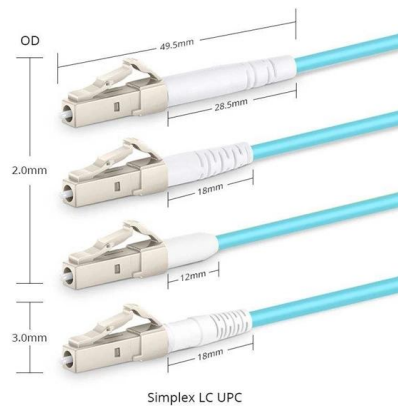
Figure 6-1 shows a simplified view of an OTN network that consists of two optical domains (identified by the clouds) and showing different types of OTN equipment within those clouds.

[Contact Us](#)

MPO Fiber Connectors: Types, Polarity, Gender & Applications for

Introduction With the rapid growth of cloud computing, 5G, and AI services, data centers require higher-density, higher-speed, and more reliable fiber cabling solutions. MPO (Multi-fiber Push

[Contact Us](#)



Understanding Optical Attenuators: Functions, Types,

Single-mode and multi-mode SFP modules are two main categories of optical modules. Both module types use LC interfaces but differ primarily in the

[Contact Us](#)



Contact Us

For datasheets, pricing, or custom fiber access solutions, please visit:
<https://frindel.es>