

Two-segment insertion method for fiber optic patch cords





Two-segment insertion method for fiber optic patch cords



Fiber Patch Cords , Leviton Network Solutions

They are available in multimode (OM1, OM3, OM4, OM5) and single-mode (OS2) fiber types, with a range of SC, ST and LC connectors. Our premium option offers

[Contact Us](#)

Fiber Optic Cable Testing Methods ,Fluke Networks

Such a comprehensive approach to fiber optic cable testing safeguards the integrity of data transmission. Fluke Networks provides comprehensive solutions for fiber optics testing, ensuring

[Contact Us](#)



A Comprehensive Guide to Fiber Optic Patch Cables

Fiber optic patch cables are found almost everywhere; cable television networks (CATV), data centers, computer networks, and telephone networks. Fiber optic

[Contact Us](#)

Guidelines Corning Recommended Fiber Optic Test

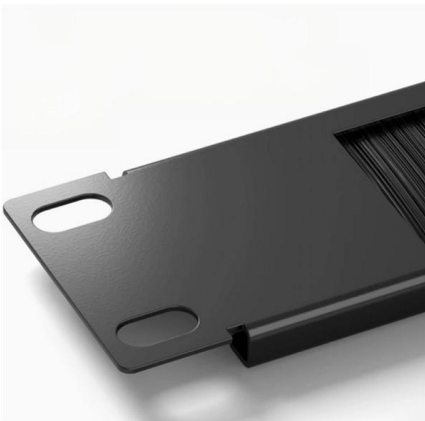
Introduction This paper explains the recommended guidelines for testing an installed fiber optic system. Fiber optic testing of a newly installed system not only verifies that the system meets its design



The Essential Guide to Fiber Optic Patch Cords

Q5. Why are China-based suppliers a good choice for fiber optic patch cords? China-based suppliers can be a good choice for fiber optic patch cords due to several

[Contact Us](#)



Fiber Optic Patch Cord Types

Learn about fiber optic patch cord types--MPO, LC, SC, FC, ST--plus key features and uses to optimize your network setup. A detailed guide

[Contact Us](#)



Permanent Link Testing of Multimode and Singlemode Fiber Optic

A Fiber Channel is made up of patch cords plus all the components of the permanent link. The Channel is constructed from components compatible with the channel length and application losses that it is

[Contact Us](#)



Fiber Polarity Technical White Paper , FS



PDF file

Two-Fiber Patch Cords - Corning

This patch cords comes with an A-B flipped polarity from the factory, but can be easily changed to A-A straight through polarity with no tools. This uniboot design allows one cable to carry

[Contact Us](#)



How to Properly Connect Two Fiber Optic Cables Inside a Cabinet

The safest and most standardized way to connect two terminated fibers inside a cabinet is by using patch cords and adapters. This approach maintains network performance while allowing

[Contact Us](#)

The FOA Reference For Fiber Optics

The test conditions are similar to how the actual cable plant will be used when communications equipment is connected (see below.) For insertion loss testing,

[Contact Us](#)



How To: Install Fiber Optic Cable for Success - trueCABLE

Learn the best practices for installing fiber optic cable, from patch cords to bulk distribution fiber.

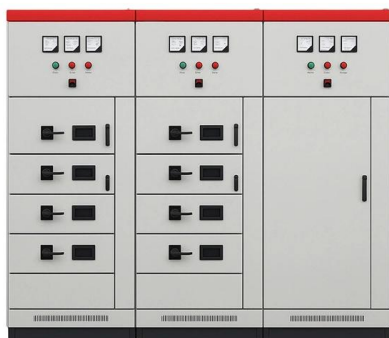
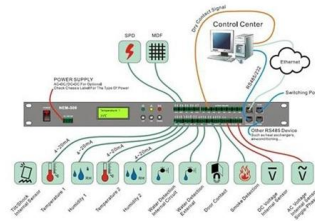
[Contact Us](#)



The FOA Reference For Fiber Optics

In the meantime, continue testing as usual. There are five ways listed in various international standards from the EIA/TIA and ISO/IEC to test installed fiber optic

[Contact Us](#)



A Breakdown of Fiber Optic Patch Connectors and Their

Duplex style fiber optic cord is associated with the term "zip cord" and that literally means two fiber patch cords that are joined together at the jacket and

[Contact Us](#)

Fiber Optic Patch Cords Guide , Types, Connectors

This guide will help you quickly understand the main types of fiber patch cords and how to choose the right solution for your project - and how ZION

[Contact Us](#)



SOPTO

Fiber optic patch cords, also known as fiber optic patch cables or fiber jumpers, are indispensable components in modern optical networks. They act as the critical link for

[Contact Us](#)

The Comprehensive Guide to Fiber Optic



Patch Cables

Introduction Fiber optic technology revolutionizes how we transmit data, offering unparalleled speed and reliability compared to traditional cabling

[Contact Us](#)



F040402G2Z20003M , Basic 2.0 mm Single-mode Patch

Cable assemblies are a basic component for any network infrastructure projects you may have. The performance of our patch cords and pigtails comply with the

[Contact Us](#)

Fiber Optic Patch Cables Tutorial

Fiber optic patch cable, often called fiber optic patch cord or fiber jumper cable, is a fiber optic cable terminated with fiber optic connectors on both ends. It has two

[Contact Us](#)



Ultimate Guide to Fiber-Optic Patch Cables: Types, Selection, and

Learn about fiber optic patch cables, their types, construction, applications, and how to choose the right one for your network needs.

[Contact Us](#)



Fiber Patch Cords: A Critical Component in Modern Fiber Optic

Conclusion Fiber patch cords are an indispensable part of the fiber optic network ecosystem. Whether in single-mode or multi-mode configurations, fiber patch cords facilitate the

[Contact Us](#)



Fiber Optic Patch Cords Guide , Types, Connectors

Explore fiber optic patch cords for telecom, data centers, and FTTH. From LC/SC to MPO/MTP and armored jumpers, ZION Communication offers

[Contact Us](#)



Understanding Common Fiber Optic Patch Cord

When it comes to building or upgrading a fiber optic network, choosing the right patch cords is crucial for long-term performance and reliability. Let's

[Contact Us](#)



SOPTO

A deep-dive into the technology of fiber patch cords. Learn about Single-mode vs. Multimode, LC/SC/MPO connectors, UPC/APC polish types, and critical selection criteria for high

[Contact Us](#)



Fiber Optic Installation and Patch Cords

Two popular finishing types are Ultra Physical Contact (UPC) and Angled Physical Contact (APC). UPC involves polishing the faces of the connector and fiber tip to curve slightly for a better fit. APC

[Contact Us](#)



Fibre optic patch cords and equipment cords

Fibre optic patchcords suitable for connecting IT hardware (e.g. switches, servers) equipped with fibre optic interfaces either directly "point-to-point" or, alternatively,

[Contact Us](#)

Introduction of fiber optic patch cords to reduce insertion

The tuning process is a method for pre-assembled fiber optic connectors, which adjusts different core eccentricity positions to a single region to

[Contact Us](#)



Introduction of fiber optic patch cords to reduce insertion

In fiber optic docking projects, the loss caused by lateral misalignment of fiber cores is called misalignment loss, which is the main source of insertion

[Contact Us](#)





Contact Us

For datasheets, pricing, or custom fiber access solutions, please visit:
<https://frindel.es>