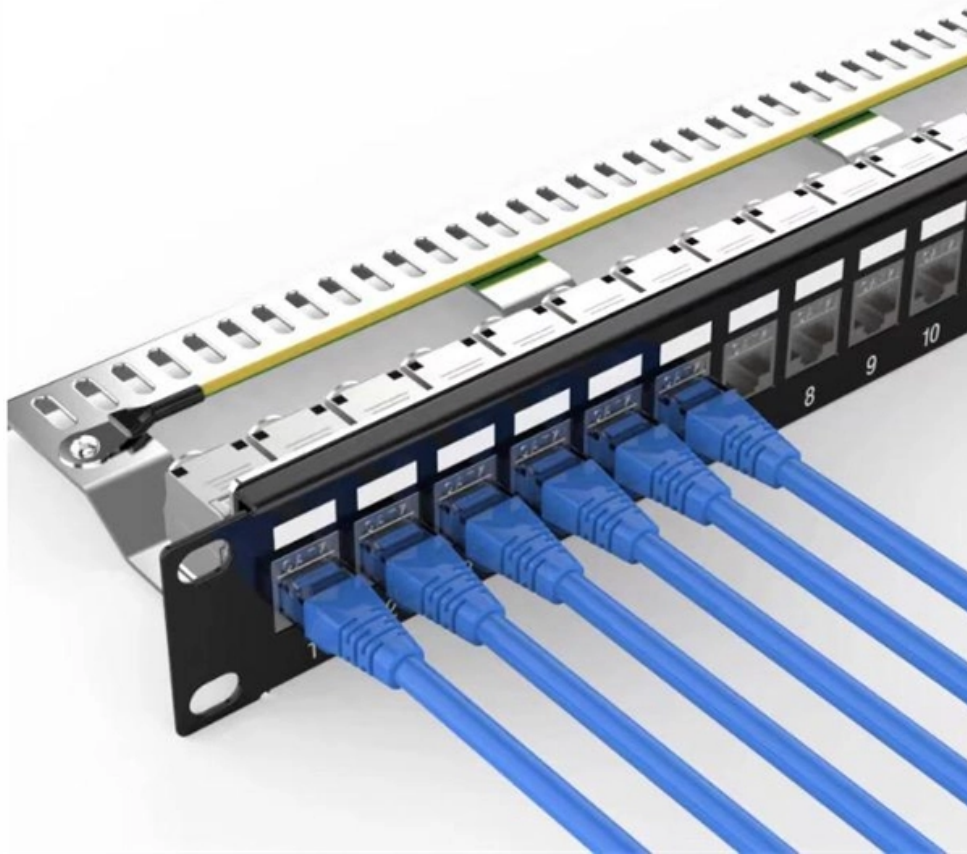


Trapezoidal cable trays use channel steel as supports





Overview

Supports shall be constructed from 12 gauge steel formed shape channel members 15/8" x 15/8" with necessary hardware such as Trapeze Support Kits (9G-55XX-22SH) as manufactured by Eaton [or engineer approved equal]. Cable Support Systems are well designed to provide necessary support for cable trays, cable ladders and trunkings. Cable supports are manufactured according to common standards from high quality raw materials. T&B channel tray systems are fabricated from a corrosion-resistant metal (low-carbon steel, stainless steel or an aluminum alloy) or from a metal with a corrosion-resistant finish (zinc or epoxy). The choice of material for any particular installation depends on the installation environment. When developing our cable support OBO can offer reliable solutions for systems, three attributes are at the routing and fastening cables securely core of what we do: efficiency, resili- for each of these installation challeng-ience and safety.



Trapezoidal cable trays use channel steel as supports



Full cable tray systems specification document

Supports shall be constructed from 12 gauge steel formed shape channel members 15/8" x 15/8" with necessary hardware such as Trapeze Support Kits (9G-55XX-22SH) as manufactured by Eaton [or

[Contact Us](#)

Trapeze Support Channel - Vantrunk

The slotted deep channel is supplied to an exact size to suit each width of Speedway Cable Ladder or Cable Tray and has the slots arranged uniformly along the

[Contact Us](#)



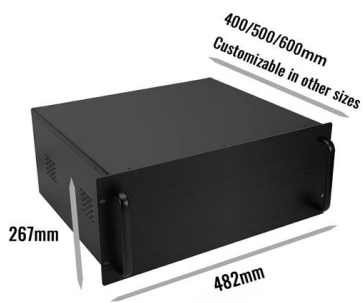
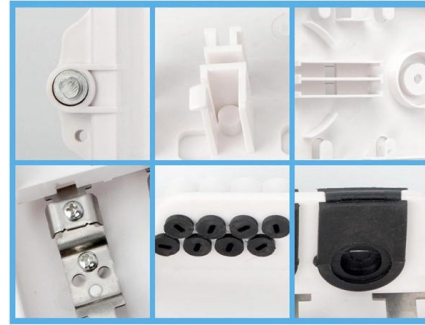
7 Types of Cable Trays: How to Choose the Right One

Cable tray systems are engineered support structures designed to route, support, and protect insulated electrical cables used for power distribution,

[Contact Us](#)

Cable Tray Supports , McMaster-Carr

Corrosion-Resistant Stainless Steel Formable Cable Trays and Fittings These are the most corrosion-resistant tray systems we offer for routing cable and hose in configurations such as curves, slopes,



Cable Tray Institute

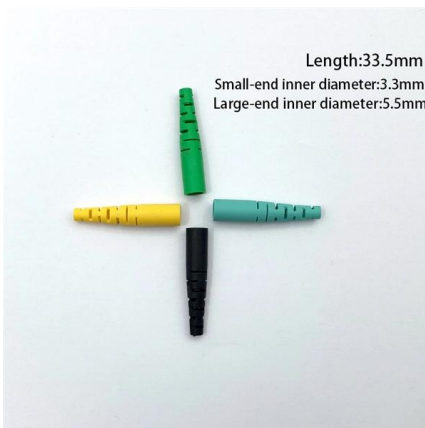
Fabricated in numerous styles (wiremesh, ladder, ventilated trough, channel, and solid-bottom) and sizes, cable tray provides the greatest versatility among cable

[Contact Us](#)

Cable tray

In the electrical wiring of buildings, a cable tray system is used to support insulated electrical cables used for power distribution, control, and communication. Cable

[Contact Us](#)



Cost of italian trapezoidal galvanized cable trays Istanbul

All Companies and suppliers for cost-of-italian-trapezoidal-galvanized-cable-trays Find wholesalers and contact them directly Leading B2B marketplace Find companies now!

[Contact Us](#)



Types of Cable Trays: Ladder, Perforated, Basket, Solid

Channel trays are narrow and cost-effective, designed to support drop cables routed from the main tray to nearby equipment. They are typically used for

[Contact Us](#)



Trapeze Support Channel - Vantrunk

The Trapeze Support Channel (IC/CNL/D) provides a versatile means of installing Speedway Cable Ladder and Cable Tray using a trapeze support arrangement.

[Contact Us](#)

Guide to cable support systems

The load capacity of the cable trays according to the support width can be read off in the diagram using load curves - here, shown as an example for a cable tray with the tray widths 100 to 600 mm.

[Contact Us](#)



450mm Cable Tray Trapeze Bracket - 300mm Drop

This 450mm cable tray bracket is a fully pre-assembled trapeze-style support, designed to suspend medium-duty cable trays from overhead threaded rod

[Contact Us](#)



Channel tray

T& B channel tray systems are fabricated from a corrosion-resistant metal (low-carbon steel, stainless steel or an aluminum alloy) or from a metal with a corrosion-resistant finish (zinc or epoxy).

[Contact Us](#)



Best Practice Guide to Cable Ladder, Cable Tray

Associated supports Bespoke supports for cable tray and cable ladder other than BS 6946 channel supports Cable cleats Used within an electrical installation to

[Contact Us](#)

Best Practice Guide to Cable Ladder and Cable Tray Systems

Trapeze hangers (Figures 8) are suitable for use with cable ladder and cable tray, supported by threaded rods hung from ceiling brackets, channel support systems or from beam clamps attached to

[Contact Us](#)



cable tray system

A cable tray system is an assembly of metallic cable tray sections and accessories, that forms a rigid structural system to support cables.

[Contact Us](#)



Cable Tray

Cable Tray Cable trays are mechanical support systems that provide a rigid structural system for electrical cables, raceways, and insulated conductors used

[Contact Us](#)



Types of Cable Trays - Purpose, Advantages,

Cable tray is alternatives to wire ways and electrical conduits, which completely enclose cables. Study types of cable trays, purpose, advantages.

[Contact Us](#)



Support methods

3 - TabLok center-hung Center-hung configurations are quick and easy when you use the pre-assembled TabLok center-hung assembly. Lock tray into position on the TabLok profile and secure a

[Contact Us](#)



CABLE TRAY SYSTEMS GUIDE

Steel Ladder System Hubbell's NEXTFRAME® Ladder Tray is the effective and widely used cable runway that supports and delivers bundles of cable between cabinets, racks, and closets, along

[Contact Us](#)





Cable Tray Technical Guide A practical guide to product selection and

SOLID-BOTTOM CABLE TRAY Providing additional cable protection, solid-bottom cable tray is sometimes preferred to support and protect numerous small instrumentation and control cables.



[Contact Us](#)



CABLE TRAY SYSTEMS GUIDE

Hubbell's NEXTFRAME® Ladder Tray is the effective and widely used cable runway that supports and delivers bundles of cable between cabinets, racks, and closets, along walls, and suspended from

[Contact Us](#)

Cable Management Support Systems

Cable Support Systems are well designed to provide necessary support for cable trays, cable ladders and trunkings. Cable supports are manufactured according to common standards from high quality

[Contact Us](#)



Metal framing & support systems

Modular framing: With our Kindorf ® 1 1/2" modular channel system, all parts fit all the time, providing the maximum number of supports and framing applications with the minimum amount of labor and

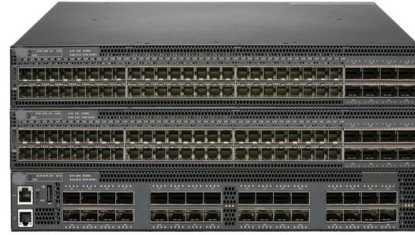
[Contact Us](#)



Cable Tray Support: Rod vs. Angle Steel

Learn about the different types of cable tray support, including rod supports and angle steel supports, and how to choose the right one for your

[Contact Us](#)



Contact Us

For datasheets, pricing, or custom fiber access solutions, please visit:
<https://frindel.es>