

Tips for Installing Lighting on Steel Structure Cable Trays





Tips for Installing Lighting on Steel Structure Cable Trays



Beama Best Practice Guide , Installation Of The System , Cable

2.2 Structural characteristics When considering the installation of the cable supports system it is imperative to avoid the cutting or drilling of structural building members without the approval of the

[Contact Us](#)

ITER Cabling Handbook

This document deals with cables trays, cables and connector installation and segregation, cable trays earthing and E.M.C. directives. These rules shall be applied in the cabling engineering workflow for

[Contact Us](#)



Cable Tray Installation

Learn everything about cable tray installation with our complete guide. Discover types, steps, and safety tips for efficient electrical cable management.

[Contact Us](#)



Metal Cable Tray Installation Guidelines , Cable Tray Institute

The Cable Tray Institute is making available the current edition of this practical guide for the proper installation of aluminum or steel cable tray systems. These guidelines will be useful to engineers,



METHOD STATEMENT CABLE TRAYS

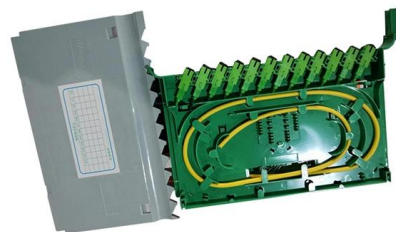
Install cable trays on the supports using correct fittings as required. Cable trays crossing structure expansion joints shall be provided with expansion connectors.

[Contact Us](#)

Best Practice Guide to Cable Ladder and Cable Tray Systems

Introduction This publication is intended as a practical guide for the proper and safe* installation of cable ladder systems, cable tray systems, channel support systems and associated supports.

[Contact Us](#)



Cable Tray Questions , Cable Tray Institute

What is your opinion regarding the maximum fill area for solid bottom channel, given that multiconductor or signal cables only are installed? Answer: The CTI has submitted a proposal to amend the

[Contact Us](#)



Cable Tray Ladder Trunking Wire Basket Installation

Cable trays shall be cut along a line of plain metal and not through perforations. Burrs or sharp edges shall be removed prior to the installation of tray sections or

[Contact Us](#)



5 Steps to Learn How to Install Cable Trays

Installing a cable tray system requires careful planning to ensure it can support the weight of the cables and adheres to electrical safety codes. Here

[Contact Us](#)



Steel Cable Trays in Commercial Buildings: Balancing

Learn how to integrate steel cable trays in commercial spaces without compromising on aesthetics. Explore design tips for functionality, safety, and

[Contact Us](#)



Cable Tray Technical Guide A practical guide to product selection and

Cable tray length is selected based on the load to be supported, the distance between the supports (also referred to as the span), and handling and installation constraints.

[Contact Us](#)



Mastering Cable Management: A Comprehensive Guide to Choosing

Explore the ultimate guide on selecting and installing light duty cable trays for your project. Discover key considerations, materials, types, and expert tips for efficient cable

[Contact Us](#)



Safely Installing, Maintaining and Inspecting Cable Trays

Review the proper methods for safely installing, maintaining and inspecting electrical cable trays; Provide information regarding the hazards of overloaded cable trays;

[Contact Us](#)

Method Statement installation of Cable Trays and Ladders

This method statement covers the site installation of the cable tray & ladders and the requirements of checks to be carried out.

[Contact Us](#)



How to Install Cable Tray: A Comprehensive Guide to Different Cable

Welcome to our step-by-step guide on installing cable trays! In this video, we'll explore the different types of cable trays available and provide detailed instructions for their installation.

[Contact Us](#)



A Guide to Installing and Supporting Electrical Cable Trays

This guide covers the critical steps, from selecting the right electrical cable tray and performing accurate cable fill calculations to managing a safe cable pull through

[Contact Us](#)



Guide to cable support systems

The mesh cable trays are suitable for the installation of power cables and cables in various areas of application. The grid spacings mean that cables can be inserted and run out in various directions.

[Contact Us](#)

Best Practice Guide to Cable Ladder and Cable Tray Systems

These guidelines will be particularly useful for the design, specification, procurement, installation and maintenance of these systems. Cable ladder systems and cable tray systems are designed for use

[Contact Us](#)



How to install Cable Trays - Best Guide in 2026

When properly installed, cable trays prevent damage to cabling and the area's structural integrity. When installed and engineered properly, cable trays also

[Contact Us](#)



Efficient Cable Tray Installation Methods for Organized

Discover efficient methods for installing cable trays to organize power, data, and security cables. Explore wall, ceiling, and floor mounting options

[Contact Us](#)



Instrumentation Cable Tray Installation Checklist and

Step-by-step instrumentation cable tray installation guide with safety tips, standards, inspections, and downloadable Excel checklist.

[Contact Us](#)



Motor protection controller



Cable Tray Technical Guide A practical guide to product selection and

A practical guide to product selection and installation This guide for engineers and installers has been developed by ABB as a practical reference regarding cable tray characteristics, installation, and

[Contact Us](#)



5 Efficient Lighting Options for Your Steel Building

Good, appropriate lighting makes all the difference whatever the type of building, and steel buildings are absolutely no exception. The intended purpose of the

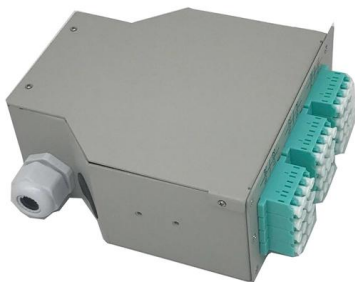
[Contact Us](#)



Technical Guidelines for Cable Tray Installation and

1. Route Planning and Layout Principles
Coordinate with Building Structure: Cable tray routing should align with architectural design, avoiding unnecessary

[Contact Us](#)



CABLE TRAYS GENERAL INFORMATION AND

Cable tray systems are to be installed so they are accessible. If possible 300mm minimum should be left above or between installed systems to allow for cable

[Contact Us](#)

Contact Us

For datasheets, pricing, or custom fiber access solutions, please visit:
<https://frindel.es>