

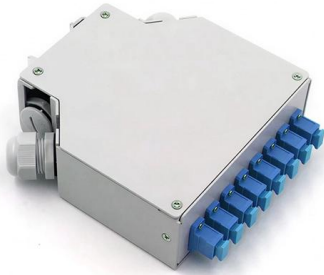
# **Three-level distribution box construction site special electricity meter**





## Three-level distribution box construction site special electricity met

---



### Measures to ensure electrical safety during the construction of

In summary, the safety measures for electricity consumption during the construction of electric meter boxes involve multiple aspects, including compliance with laws and regulations, configuration of

[Contact Us](#)

### Microsoft Word

5.7. All meter boxes shall be installed at a height of 200 mm from ground to the bottom of the meter box. Civil construction requirements All civil works shall be done according to SEC unified (Civil Work

[Contact Us](#)



### METER BOX ESCOM THREE PHASE - Dynamic

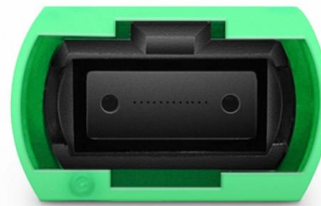
Distribution Board Range is CE Certified  
PRODUCT FEATURES Surface Mount TECHNICAL  
SPECS Dimensions: 760 (H) x610 (W) x220 (D)

[Contact Us](#)



### ?? Electrical Installation Rack 18#Distribution Construction Site Three

Buy ?? Electrical Installation Rack  
18#Distribution Construction Site Three-Level  
Engineering Meter online today! Dear Sir/Madam,  
Thank you for visiting our store! ?The quality of  
our products is



### Construction Site Power Connection

This includes a connection point (for example via a site connection box), the main distribution with protection and metering devices, sub-distributions, cables, plug systems, as well as

[Contact Us](#)



### Detailed introduction of safety requirements for distribution box

The low-voltage power supply system at the construction site shall be equipped with a general distribution box, a distribution box and a switch box to implement three-level power distribution.

[Contact Us](#)



### Primary and secondary power distribution systems

Secondary distribution systems A low-voltage network or secondary network is a part of electric power distribution which carries electric energy from

[Contact Us](#)



### Distribution boards components



Distribution boards (generally only one in residential premises) usually include the meter (s) and in some cases (notably where the supply utilities impose a TT earthing system and/or tariff

[Contact Us](#)



### **What is Level 1, Level 2 and Level 3 distribution box**

The construction power distribution cabinet is specially designed for the special situation of the construction site. Comply with the construction department related construction electricity standards.

[Contact Us](#)

### **Maharashtra State Electricity Distribution Company Limited**

The Distribution Box should be subjected to Short Time Withstand Current Test for 4KA for 2 seconds for 63/100 KVA Box and 8 KA for 2 second for 200 KVA box) all the circuits independently.

[Contact Us](#)



### **Maharashtra State Electricity Distribution Company Limited**

Technical Specifications for FOR MULTI-METER BOX SUITABLE FOR HOUSING 4/8/12/18 NOS. OF SINGLE PHASE METERS OR THREE PHASE METERS MADE OUT OF SHEET MOULDING

[Contact Us](#)





## GTC Technical Guidelines

Ideally, service termination equipment and the meter should be located in an approved built-in meter box, on the wall closest to the electricity main at the front of the property.

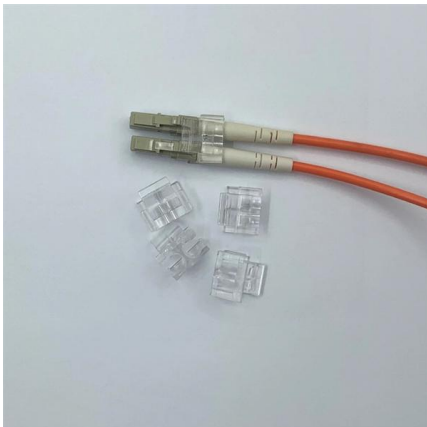
[Contact Us](#)



## Three-Tier Power Distribution System in a Newly Constructed

Learn about the three-tier power distribution system (main secondary tertiary distribution boards) in a new residential area including their roles connections and safety measures for 0.4kV power supply.

[Contact Us](#)



## Construction site electrical enclosure

Find your construction site electrical enclosure easily amongst the 25 products from the leading brands (HLC, WALTHER WERKE, DIGITAL ELECTRIC, ) on

[Contact Us](#)



## Three Phase Distribution Box Functions and

A three phase distribution box safely distributes and protects power for large equipment in factories, buildings, and high-demand commercial settings.

[Contact Us](#)



### Power Distribution Box, 110V Electricity Meter Electrical

Equipped with a multifunctional electricity meter, leakage circuit breaker, and a maximum rated current of 20A branch circuit breaker; SAFE AND RELIABLE:

[Contact Us](#)



### What are the primary, secondary and tertiary distribution boxes?

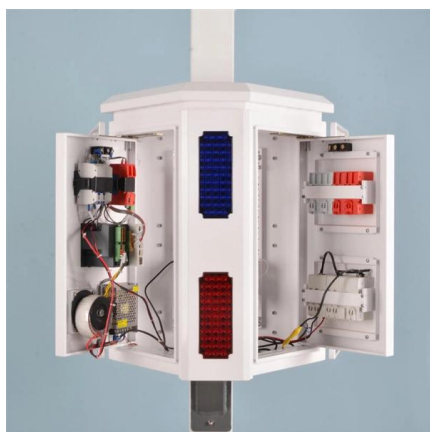
It is specially designed for the special situation of the project construction site and meets the relevant construction power specifications and standards of the construction department.

[Contact Us](#)

### Electric power distribution

A 50 kVA pole-mounted distribution transformer Electric power distribution is the final stage in the delivery of electricity. Electricity is carried from the transmission

[Contact Us](#)



### CUSTOMER WORKS GUIDE

YOU MUST: tick or cable cover. Details of sizes and where to purchase Label your electricity meter box if you have more than one supply going into the building. de of the meter box. This is where our

[Contact Us](#)



## Specifications for Electric Installations

All customers are required to consult with the company regarding service availability before the completion of plans, purchase any equipment and before any construction commences on a facility

[Contact Us](#)



## The Meaning and Function of Primary, Secondary, and Tertiary

This explanation aims to clarify the roles and functions of primary, secondary, and tertiary distribution boxes, enhancing the understanding of these critical components in electrical distribution

[Contact Us](#)

## Service and Meter Requirements

Updated compliance verbiage and removed "be approved by the Company prior to construction" for ITEM A. Instrument transformer cabinets are not individually reviewed and approved by ComEd.

[Contact Us](#)



## Contact Us

---

For datasheets, pricing, or custom fiber access solutions, please visit:  
<https://frindel.es>