

The switch uses aggregation uplink





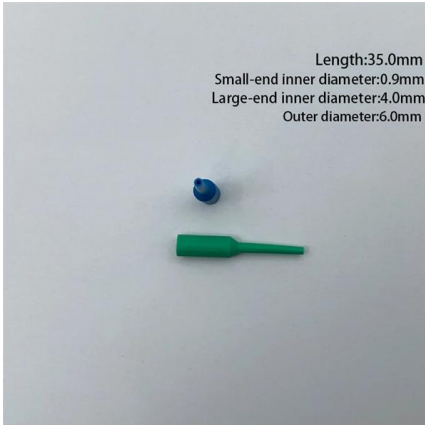
Overview

Port aggregation can increase maximum throughput, and allow for network redundancy. It does this by splitting traffic across multiple ports instead of forcing clients to use a single uplink port on a switch. An Aggregation or "Top-of-Rack" switch is designed to connect everything in a rack at high speeds, then have an even bigger pipe out to the rest of the network. They manage the vertical data aggregation between access layer switches and aggregation or core level devices (such as core switches and routers) within a Local Area Network (LAN). Configure link redundancy in network topologies with dual uplink between different layers of the network Configure UFD to achieve network path redundancy Applicable products, versions, ports and interfaces Learn more about the new features and enhancements introduced in this release!How to interconnect the layers with each other: Using Port aggregation protocols and use the available regular ports on the switches to uplink to other layers?

Thanks 05-16-2016 12:44 PM Disclaimer The Author of this posting offers the information contained within this posting without consideration.



The switch uses aggregation uplink



What is an Aggregation Switch? , Features and Practical Benefits

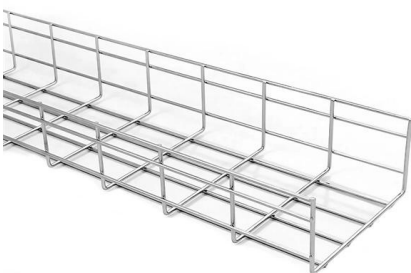
This article focuses on the question of what is an aggregation switch and how it works its uses and its implementation. Read till the end to learn this very important concept in network

[Contact Us](#)

Core/Aggregation Switches , Nodexon

There are various approaches to connect multiple switches, among which switch stacking vs trunking vs uplink are the most prevailing ones. This post aims to elaborate on the three switch connection

[Contact Us](#)



JetStream 8-Port 10GE SFP+ L2+ Managed Switch

JetStream 8-Port 10GE SFP+ L2+ Managed Switch. As a 10G switch with full SFP+ ports that seamlessly integrates into the Omada Software Defined Networking

[Contact Us](#)

AOS-CX 10.15.xxxx Link Aggregation Guide

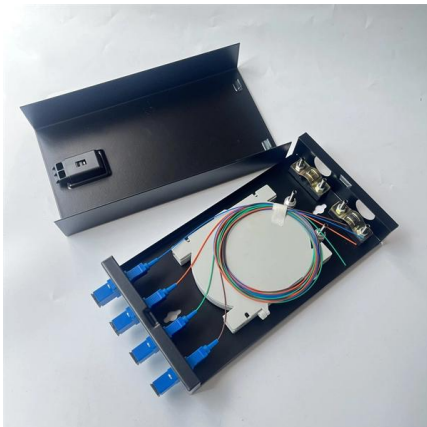
Configure link redundancy in network topologies with dual uplink between different layers of the network. Configure UFD to achieve network path redundancy. Applicable products, versions, ports and



Everything You Need to Know About Aggregation Switch

The aggregation switch also uses the Spanning Tree Protocol (STP) to prevent network loops and ensure that data is transmitted only through the most

[Contact Us](#)



What is an Aggregation Switch?

The aggregation switch is located in the middle of the network architecture, which is equivalent to a middle-level manager of a company. It

[Contact Us](#)



How to enable Link Aggregation (LAG) on UniFi Switches

Learn how to use Link Aggregation between UniFi switches or clients to increase bandwidth and redundancy. Everything you need to know

[Contact Us](#)

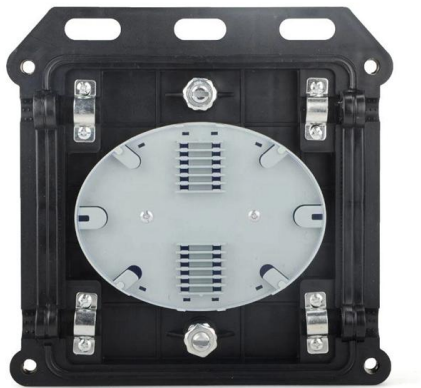
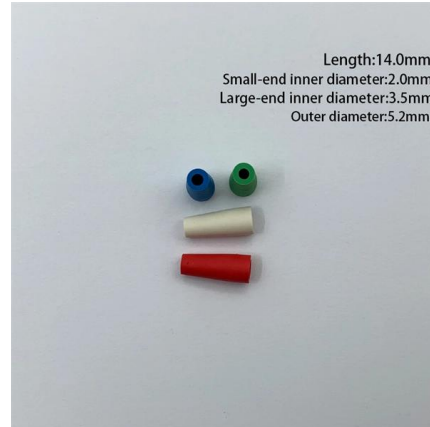




What is Switch Aggregation, Its Role and Selection Advice

This article wraps up "what is switch aggregation" and suggestions for choosing an aggregation switch. By considering these factors, network administrators can make informed

[Contact Us](#)



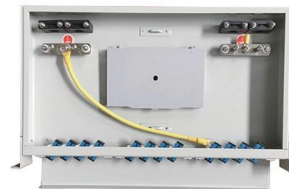
Zyxel CX4800-56F-DDC 48-Port Fiber Switch , L3 Aggregation, 100G Uplink

Keep aggregation layers moving with 48 x 10G/25G SFP28 ports, 8 x 100G uplinks, and dual DC power. Built for dense fiber backbones and uptime.

[Contact Us](#)

WHITE PAPER 5G Uplink Enhancement Techniques

2. 5G Uplink Challenges and Enhancement Techniques Since 3GPP Release 15 specifications were first published there were certain challenges that uplink performance had to deal with. Firstly, 5G

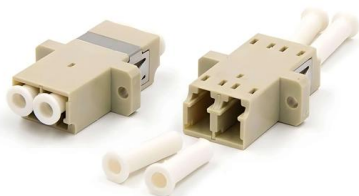


[Contact Us](#)

Aggregation Switch

An Aggregation or "Top-of-Rack" switch is designed to connect everything in a rack at high speeds, then have an even bigger pipe out to the rest of the network.

[Contact Us](#)





How does link aggregation work in reality?

My plan was to have my three switches use all four of the 10Gb uplink ports to a fourth "aggregator switch" so that I'd have the necessary bandwidth for a total of 12 10Gb links to the aggregator. Does

[Contact Us](#)



port aggregation VS uplinks

It depends whether uplink ports are "special", and if they are, do you need the "special". For example, on the 3750 series, the uplink ports are often modular transceiver ports, so if you need

[Contact Us](#)

Aggregation Switch

An aggregation switch refers to a type of switch used to connect multiple ToR switches to a core switch/router in a cloud data center network. It enables high-bandwidth aggregation ports to be

[Contact Us](#)



Understanding Switch Aggregation: A Comprehensive

Defining switch aggregation and its role in network architecture Switch aggregation, also known as link aggregation or trunking, is a method used

[Contact Us](#)



Multi-Gigabit Switches for IT Networks , Omada by TP-Link

Omada multi-gigabit switches include 10G uplink ports -- typically via SFP+ slots -- for connecting to aggregation or core switches at higher speeds. This allows multi

[Contact Us](#)



TP-Link TL-SG3428XMP Managed Switch Price in Bangladesh

The 4 dedicated 10G SFP+ uplink slots provide high-bandwidth fiber connectivity for NAS systems, virtualization servers, and backbone aggregation. With a 128Gbps switching capacity and 95.23Mpps

[Contact Us](#)

What is a 10G SFP+ Switch and How to Use It?

This 10G SFP+ managed switch operates at Layer 3, providing advanced network management features such as port mirroring, VLAN, static

[Contact Us](#)



Link Aggregation (LAG) Explained: When & Why to Use It , AMVIA

Link aggregation operates at Layer 2 of the OSI model -- the data link layer. It is a LAN technology used within your building's network infrastructure, typically between switches or between a server and a

[Contact Us](#)

Port Aggregation FAQs



What is the benefit of aggregating ports? Port aggregation can increase maximum throughput, and allow for network redundancy. It does this by splitting traffic

[Contact Us](#)



Can I aggregate multiple uplink ports between Ethernet switches?

What you need is link aggregation (LAG), preferably LACP which is an IEEE, vendor-agnostic aggregation protocol. Put the desired interfaces in an LACP trunk group on both sides and then

[Contact Us](#)



How to Aggregate Ports on UniFi Switch

Aggregating ports on a UniFi switch combines multiple physical links into a single logical link, increasing bandwidth and providing redundancy. Follow these steps to create and assign

[Contact Us](#)



Technical Deep Dive into the FiberHome HSUC Switch Uplink Card for

2. Deep Technical Breakdown of the HSUC Switch and Uplink Module To understand the core performance boundaries of the HSUC module, network infrastructure specialists must analyze its

[Contact Us](#)



Can I aggregate multiple uplink ports between Ethernet switches?

This switch has 48 SFP+ ports and 6 40-GbE uplink ports. Goal: To the greatest extent possible, I would like to provide 10-GbE line-rate performance between any pair of hosts in both rooms. As long as

[Contact Us](#)



What Is an Aggregation Switch and How to Choose?

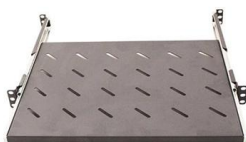
So, what exactly is an aggregation switch, and how do you choose the right one? Let's examine it in detail. What Is an Aggregation Switch? An aggregation switch

[Contact Us](#)

In-depth analysis: What is an aggregation switch?

In many network constructions, we have all heard of switches. So do you really understand switches? Why are aggregation switches often overlooked?

[Contact Us](#)



Webit Cabling

Uplink Port vs Normal Port on Network Switch

This article explores the differences between uplink and normal ports in network switches, emphasizing their roles, data processing capabilities, and

[Contact Us](#)



Contact Us

For datasheets, pricing, or custom fiber access solutions, please visit:
<https://frindel.es>