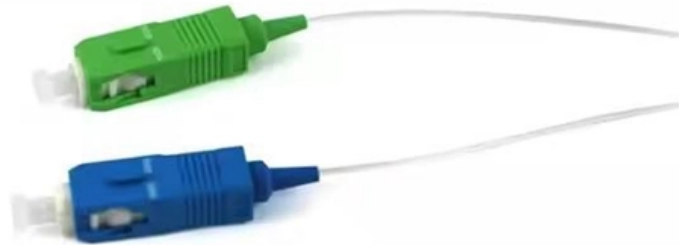


The switch connects two networks





Overview

Multiple data cables are plugged into a switch to enable communication between different networked devices. Switches manage the flow of data across a network by transmitting a received only to the one or more devices for which the packet is intended.



The switch connects two networks



What Is a Network Switch? , How Do Network Switches Work? , Akamai

A network switch is a technology that allows two or more IT devices such as computers to communicate with each other, forming a communications network. Switches enable devices on the network to

[Contact Us](#)

What is a Network Switch? Explained Clearly

A network switch is a device that connects devices on a network, managing data traffic to improve speed, communication, and efficiency.

[Contact Us](#)



What is a network switch and how does it work?

Switches connect network segments, providing full-duplex communication, valuable network performance data and efficient use of network bandwidth.

[Contact Us](#)



What Is a Switch? Understanding Network Switches

All networks consist of connected devices, but how are those connections established? Many networks use a device called a switch to link

[Contact Us](#)



How LAN Switches Work

Switches that provide a separate connection for each node in a company's internal network are called LAN switches. Essentially, a LAN switch creates a series of instant networks that contain only the

[Contact Us](#)

What is a network switch? , Switch vs. router

What Is A Network Switch?What Is The Difference Between A Switch and A Router?What Is A Layer 2 Switch? What Is A Layer 3 Switch?What Is An Unmanaged Switch? What Is A Managed Switch?What Is The Difference Between A Mac Address and An IP address?How Do Network Switches Know The Mac Addresses of The Devices in Their Network?How Does Cloudflare Protect Network Switches?A network switch connects devices within a network (often a local area network, or LAN*) and forwards data packets to and from those devices. Unlike a router, a switch only sends data to the single device it is intended for (which may be another switch, a router, or a user's computer), not to networks of multiple devices. *A local area network (LAN See more on cloudflare Wikipedia



Network switch - Wikipedia

SummaryOverviewRole in a networkBridgingTypesTraffic monitoringSee also



A switch is a device in a computer network that connects other devices together. Multiple data cables are plugged into a switch to enable communication between different networked devices. Switches manage the flow of data across a network by transmitting a received network packet only to the one or more devices for which the packet is intended. Each networked device connected to a switch can be identified b

[Contact Us](#)



What is a Network Switch? How it Works and Types

What is a network switch? A network switch connects devices in a network to each other, enabling them to talk by exchanging data packets.

[Contact Us](#)

What Is a Network Switch?

A network switch is defined as a hardware component responsible for relaying data from a computer network to the destination endpoint through packet

[Contact Us](#)



Network Switches: What Are They and How Do They

In network topology, a network switch connects to a router, and any devices within that network plug into the switch using Ethernet cables.
Network

[Contact Us](#)

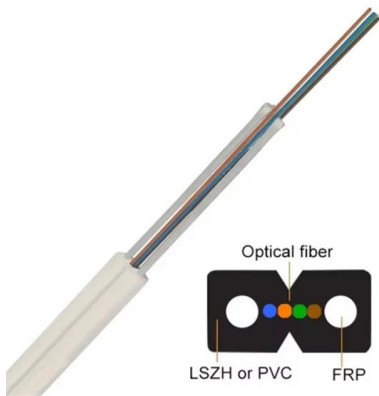


What Is the Switch and How Does a Switch Work



A switch is a networking device that connects devices on a computer network. It allows multiple devices to communicate with each other by forwarding packets of data to their intended

[Contact Us](#)



Changing These 3 Settings Will Instantly Make Your

Your Switch 2 should automatically connect to the 5 GHz network, but you might want to double-check which band it's actually using by navigating to

[Contact Us](#)

What Is a Network Switch? Function & FAQs Explained

What does a network switch do? A Network switch connects devices that are part of the same local network. For example, a network switch provides connectivity between Laptops, Printers, and

[Contact Us](#)



Network Switches: Local Network Data Traffic Control

What is a Network Switch? A network switch is a central device that connects multiple computers and servers so they can share resources and data.

[Contact Us](#)



Multi-fiber Push On (MPO) Connectors

Multi-fiber push on connectors, or MPOs, are fiber cable connectors comprised of multiple optical fibers. Learn more at Fluke Networks.

[Contact Us](#)



How Does a Switch Work?

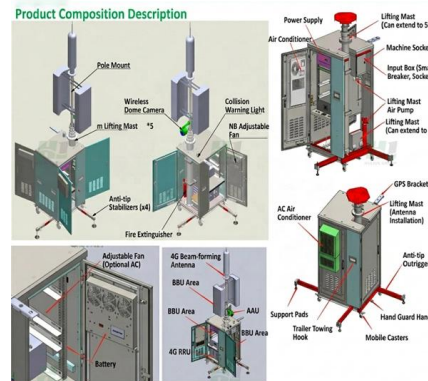
Switches are key network building blocks. Learn how does a switch work to securely connect your small business to the rest of the world and connect your devices.

[Contact Us](#)

What is an Ethernet switch?

What is an Ethernet switch? An Ethernet switch is a type of network hardware that is foundational to networking and the internet. Ethernet switches connect cabled

[Contact Us](#)



Best Way to Connect Multiple Switches

How to connect multiple switches in a network with clear steps and tips for effective setup and configuration.

[Contact Us](#)



What is a Network Switch and How Does it Work?

Switch establishes a temporary connection between the source and destination for communication and terminates the connection once the

[Contact Us](#)



How to Connect Two Switches Together: A Comprehensive Guide

How to connect two switches together? Are you looking to expand your network infrastructure and connect multiple switches together? Connecting switches can be achieved through

[Contact Us](#)



Understanding Network Switches and Switching

In this article, we will explore what network switches are, how they function, and the different switching techniques used to ensure optimal data transmission. By the

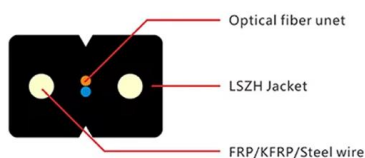
[Contact Us](#)



What Is Network Switching?

What is a switch? A switch is a hardware component in network infrastructure that performs the switching process. The switch connects network devices, such as

[Contact Us](#)





What is a network switch? , Switch vs. router

What Is A Network Switch?What Is The Difference Between A Switch and A Router?What Is A Layer 2 Switch? What Is A Layer 3 Switch?What Is An Unmanaged Switch? What Is A Managed Switch?What Is The Difference Between A Mac Address and An IP address?How Do Network Switches Know The Mac Addresses of The Devices in Their Network?How Does Cloudflare Protect Network Switches?A network switch connects devices within a network (often a local area network, or LAN*) and forwards data packets to and from those devices. Unlike a router, a switch only sends data to the single device it is intended for (which may be another switch, a router, or a user's computer), not to networks of multiple devices. *A local area network (LAN See more on cloudflare Wikipedia



Network switch - Wikipedia

SummaryOverviewRole in a networkBridgingTypesTraffic monitoringSee also

A switch is a device in a computer network that connects other devices together. Multiple data cables are plugged into a switch to enable communication between different networked devices. Switches manage the flow of data across a network by transmitting a received network packet only to the one or more devices for which the packet is intended. Each networked device connected to a switch can be identified b

[Contact Us](#)



What is a network switch? , Switch vs. router

What Is A Network Switch?What Is The Difference Between A Switch and A Router?What Is A Layer 2 Switch? What Is A Layer 3 Switch?What Is An Unmanaged Switch? What Is A Managed Switch?What Is The Difference Between A Mac Address and An IP address?How Do Network Switches Know The Mac Addresses of The Devices in Their Network?How Does Cloudflare Protect Network Switches?A network switch connects devices within a network (often a local



area network, or LAN*) and forwards data packets to and from those devices. Unlike a router, a switch only sends data to the single device it is intended for (which may be another switch, a router, or a user's computer), not to networks of multiple devices. *A local area network (LAN See more on cloudflare Wikipedia

Network switch - Wikipedia

SummaryOverviewRole in a networkBridgingTypesTraffic monitoringSee also

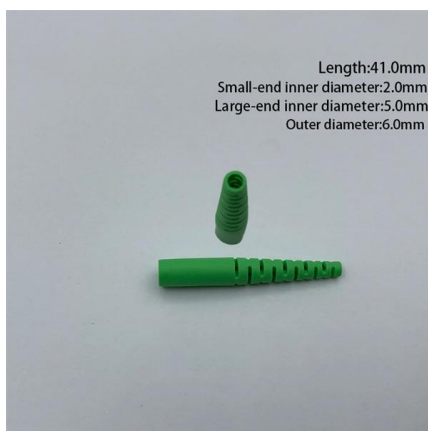
A switch is a device in a computer network that connects other devices together. Multiple data cables are plugged into a switch to enable communication between different networked devices. Switches manage the flow of data across a network by transmitting a received network packet only to the one or more devices for which the packet is intended. Each networked device connected to a switch can be identified b

[Contact Us](#)

What is a Network Switch and How it Works?

What is a Switch in Computer Networks? A network switch is a device that connects multiple devices (such as computers, printers, and servers) within a

[Contact Us](#)



What Is a Switch? Computer Networking

A network switch is a central communication device for local area Ethernet networks. Many home broadband routers feature an embedded Ethernet

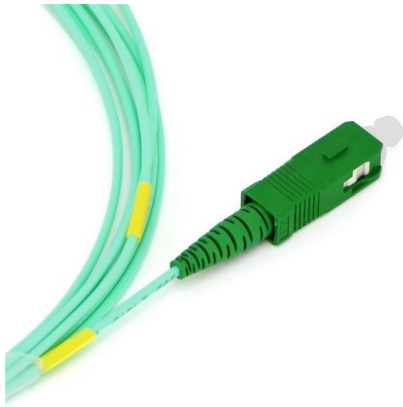
[Contact Us](#)

Network switch



Network switch Avaya ERS 2550T-PWR, a 50-port Ethernet switch A network switch (also called switching hub, bridging hub, Ethernet switch, and--by the IEEE --

[Contact Us](#)



What Is a Network Switch? , phoenixNAP IT Glossary

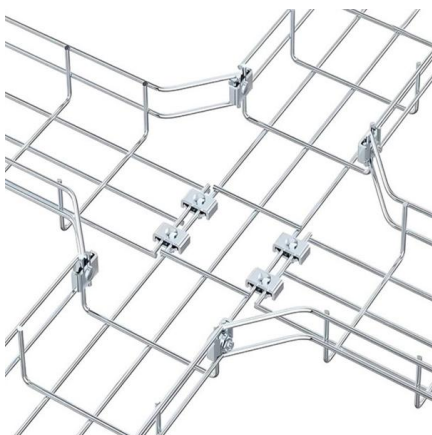
What is a Network Switch? A network switch is a crucial device in computer networking that serves to connect multiple devices within a local area

[Contact Us](#)

How Does a Switch Work?

Learn how switches form a key networking building block that connect your devices to each other. Switches are key building blocks for any network. They connect multiple devices, such as computers,

[Contact Us](#)



Understanding Routers, Switches, and Network Hardware

A modem connects your home network to the Internet, and a router ensures the traffic from the Internet reaches the correct device on your network

[Contact Us](#)



Contact Us

For datasheets, pricing, or custom fiber access solutions, please visit:
<https://frindel.es>