

The metal parts of the distribution box are electrified





The metal parts of the distribution box are electrified



What is the Internal Structure of The Distribution Box

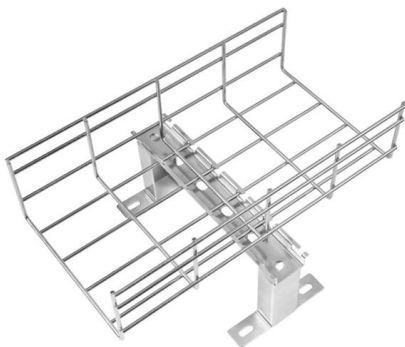
Busbars are metal bars--usually made from copper or aluminum --that play a vital role in distributing electricity throughout the system. They act as the main connection point for incoming

[Contact Us](#)

How Does a Power Distribution Box Work

But how does a power distribution box work exactly? In this article, we'll walk you through the step-by-step process of how power flows through a distribution box,

[Contact Us](#)



What is a Distribution Box? - A Comprehensive Guide

A distribution box organizes and controls power flow, ensuring safety and efficiency in electrical systems.

[Contact Us](#)

Guardians of Safety: A Comprehensive Guide to

Stringent electrical codes and regulations govern the design and installation of electrical boxes. This commitment to compliance ensures that power distribution



What is an Electrical Distribution Box? A Comprehensive Guide

At its core, an electrical distribution box (or distribution board) is a metal or plastic enclosure that houses various components responsible for managing and distributing electricity

[Contact Us](#)

Single Phase Distribution Box Definition and Main Parts

A single phase distribution box controls and protects home or office circuits. Learn its definition, main parts, and how it ensures electrical safety.

[Contact Us](#)



What is an Electrical Distribution Box? A

At its core, an electrical distribution box (or distribution board) is a metal or plastic enclosure that houses various components responsible for

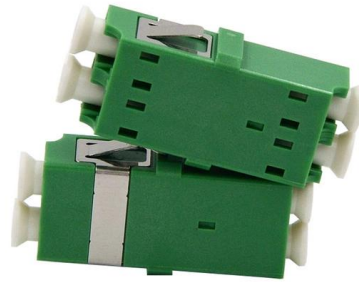
[Contact Us](#)



What Is an Electrical Distribution Box? A Complete Guide

An electrical distribution box routes power, prevents overloads, and keeps wiring organised--essential for safe, efficient home and

[Contact Us](#)



Distribution Box Guide: Types, Components & Solutions

It acts as a protective enclosure that houses several key components, such as circuit breakers, fuses, and bus bars. These components work together

[Contact Us](#)

Understanding Distribution Boxes: Your Guide to Power

Weatherproof Distribution Boxes These serve specific outdoor purposes, with rain, dust, and extreme temperatures sealed shut, protecting any

[Contact Us](#)



What Is an Electrical Distribution Box and Why Is It

An electrical distribution box distributes power safely, prevents overloads, and protects circuits, ensuring efficient and reliable electrical systems.

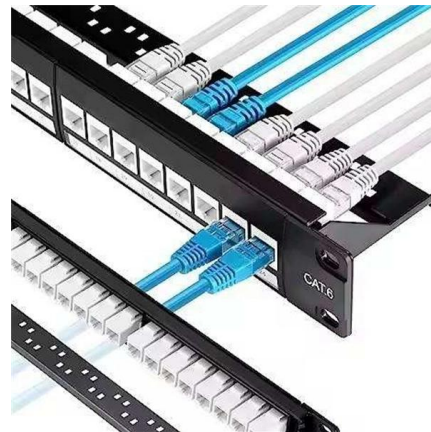
[Contact Us](#)



Power Distribution Boxes Explained Simply

Discover the essentials of a Power Distribution Box--how it works, key types, benefits, and tips to ensure safe, efficient electrical power management.

[Contact Us](#)



Complete Guide For Distribution Boxes Types

Distribution boxes, also known as electrical distribution boards or panels, are pivotal components in electrical systems, ensuring the safe and organized distribution of

[Contact Us](#)

Distribution Box vs Control Box vs Junction Box: Key

It does not control or distribute power in the same way as distribution or control boxes. Instead, its main role is to facilitate safe cable connections and

[Contact Us](#)



About the Internal Structure and Basic Components of the Distribution Box

Electric power distribution box and distribution cabinet, distribution panel, distribution panel, etc., are complete sets of equipment for centralized installation of switches, meters and other equipment. The

[Contact Us](#)

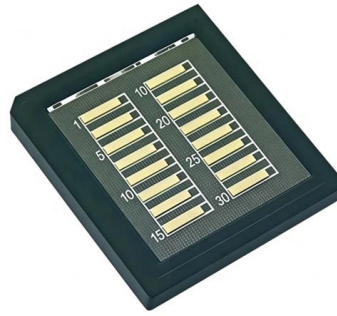
Understanding Distribution Boxes:A



Comprehensive Guide

Understanding its significance, this article covers what a distribution box is, how it functions, its structure, the various types available, and how it

[Contact Us](#)



Distribution Boxes: Types and Functions

Also called a distribution board, panel board, breaker panel, or electric panel, it is the central hub in an electrical system that divides incoming

[Contact Us](#)

Internal Structure of Distribution Box

The internal structure of the distribution box is designed to safely distribute power from the main power source to multiple branch circuits. It

[Contact Us](#)



What is the Function of a Distribution Box in Electrical Systems

Understand the function of the distribution box in electrical systems and how it ensures safe and efficient power distribution.

[Contact Us](#)

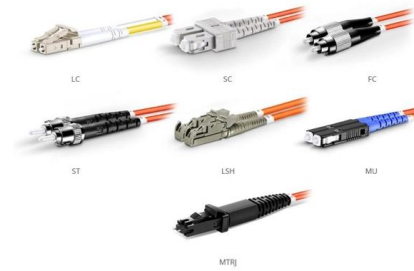




A Definitive Guide To Distribution Boxes

The distribution box acts as the center of power distribution, distributing electricity to all connected devices. A distribution box, also known as a distribution board, panel board, breaker

[Contact Us](#)



OM1 Fiber Patch Cable Family



Distribution Box: Key Functions, Components, and

Bus Bars: Metal strips that carry electricity within the box, serving as central connection points for circuits. Neutral Link: Provides a return path for

[Contact Us](#)

Distribution Box Guide: Types, Components & Solutions

Understand distribution boxes (DB boxes) in 5 minutes. Learn about types, components, functions, and uses. Find the perfect DB box for your needs.

[Contact Us](#)



About the Internal Structure and Basic Components of the Distribution

The electric distribution box is a low-voltage power distribution device that assembles switchgear, measuring instruments, protective appliances and auxiliary equipment in a closed or semi-closed

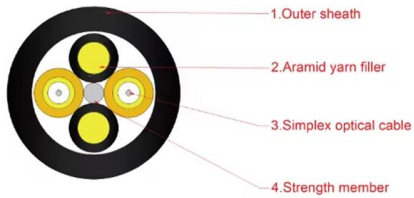
[Contact Us](#)

Electrical Power Distribution System:



Electrical power is the most widely used form of energy because it can be transmitted and distributed far more easily than other forms, such as

[Contact Us](#)



how does a power distribution box work

First, we need to understand what a power distribution box is. The box is a closed container made of metal or plastic, which contains various electrical

[Contact Us](#)

Contact Us

For datasheets, pricing, or custom fiber access solutions, please visit:
<https://frindel.es>