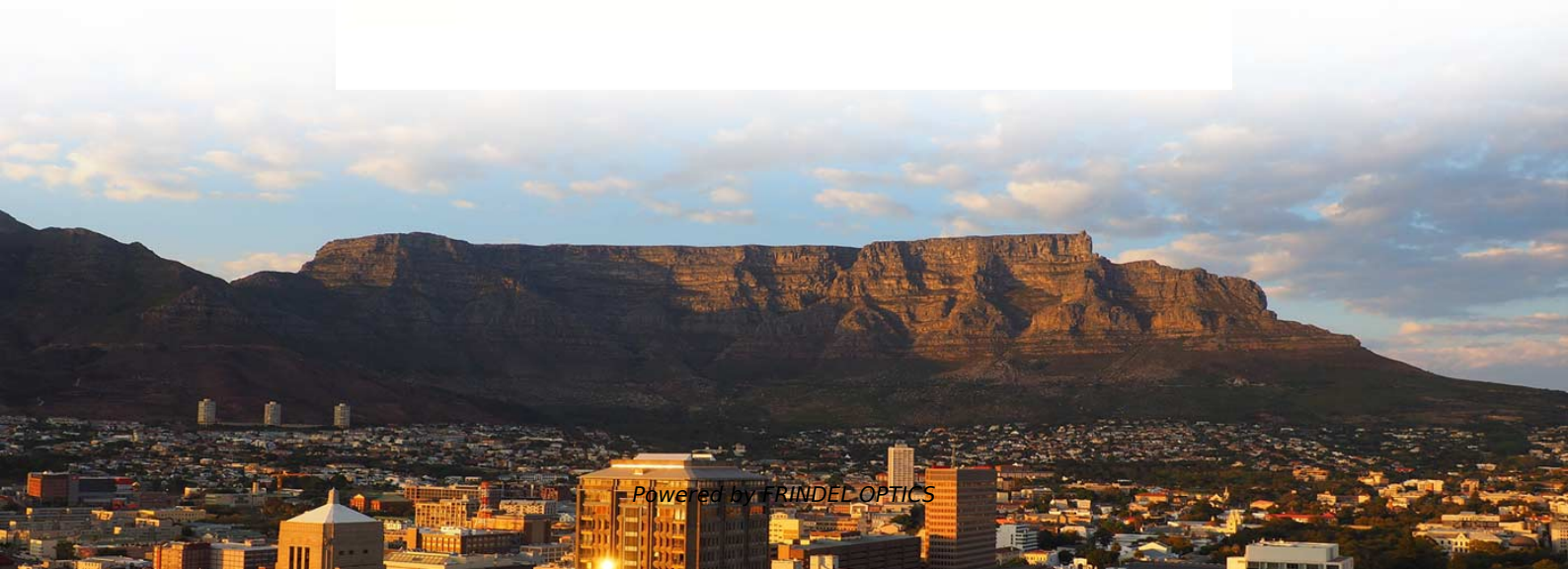


The incoming lines to the secondary distribution box can be connected in series





Overview

A grid networks consist of an interconnected grid of circuits, energized from several primary feeders through distribution transformers at multiple locations.

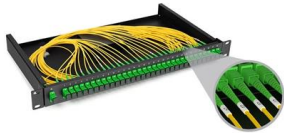


The incoming lines to the secondary distribution box can be connected

Secondary unit substations design guide

An ATC uses a cable connection on either the primary side, secondary side or both, and is placed between the transformer and the remotely mounted primary or secondary equipment.

[Contact Us](#)



The Meaning and Function of Primary, Secondary, and Tertiary

The terms primary, secondary, and tertiary distribution boxes are relative. Let's make an example for clarity: A newly constructed residential area introduces a 10kV power line to a substation. From the

[Contact Us](#)



Incoming feeder, coupling, and outgoing feeder cubicle with ACB

Hereby, it must be possible to move the circuit-breaker inside the cubicle from connected through test to disconnected position with the door closed. The degree of protection has to be

[Contact Us](#)



Understanding Circuit Breaker Wiring Configurations in

Circuit Breaker Wiring Methods Live (L) Wire Connection: In a distribution box setup, the incoming live wire (also known as phase or hot wire,



Electric power distribution

Distribution transformers again lower the voltage to the utilization voltage used by lighting, industrial equipment and household appliances. Often several customers

[Contact Us](#)



System Arrangements

Several commonly used system topologies are presented here, along with the pros and cons of each. The figures for each of these assume that the distribution and utilization voltage are the same, and

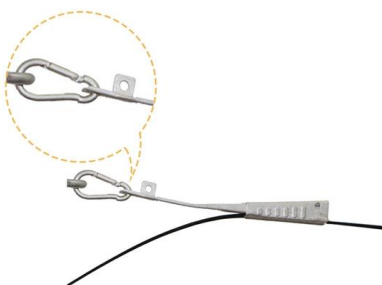
[Contact Us](#)



Substation single line diagram - Er.Roshan Kumar

In case there is a breakdown of one incoming line, the continuity of supply can be maintained by the other line. The substation has duplicate busbar system: one 'main busbar' and the

[Contact Us](#)



AC Distribution System , Primary



distribution

There is no definite line between transmission and distribution according to voltage or bulk capacity. However, in general, the AC Distribution System is the electrical

[Contact Us](#)



10 Electrical Distribution System Arrangements Explained

Four basic circuit arrangements are used for the distribution of electric power: radial, primary selective, secondary selective, and secondary

[Contact Us](#)



Secondary LV/MV distribution substations in a nutshell

MV/LV distribution substations 1. General The space requirements of a substation depend on the equipment to be housed,

[Contact Us](#)



Introduction to Power Distribution Systems

Primary distribution lines are "medium-voltage" circuits, normally thought of as 600 V to 35 kV. Close to end users, a distribution transformer takes the primary distribution voltage and steps it down to a low

[Contact Us](#)



The difference between the first, second, and third levels of

Let's make a hypothesis: a newly built residential area introduces a 10kV incoming line and builds a distribution room.

[Contact Us](#)



How to determine the size, installation method and

1) Generally, the incoming line of power distribution box adopts five wire system, that is, a, B and C three-way phase line (the general color is yellow, green and red),

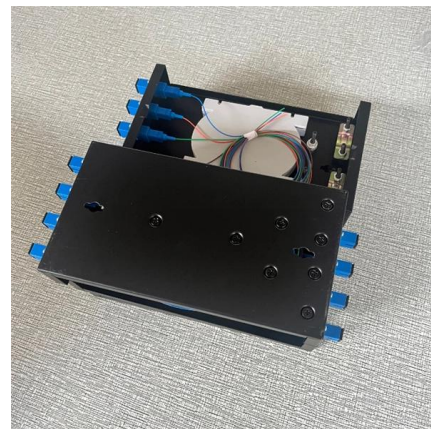
[Contact Us](#)



Electric Power Distribution Systems

Depending on the geographical location, the distribution network can be in the form of overhead lines or underground cables. Cables are commonly used in urban areas and overhead lines are adopted for

[Contact Us](#)



Busbar Arrangements in Substations , Terminal and

Fig. 25.7 shows the arrangement of duplicate bus-bar system in a typical sub-station. The two 66kV incoming lines can be connected to either bus-bar by a bus

[Contact Us](#)



Slide 1



Transformers can be used to supply 240-volt ungrounded system by connecting two halves of each secondary winding in parallel, 480-volt ungrounded system or 480Y/277 volt grounded system by

[Contact Us](#)



Understanding Circuit Breaker Wiring Configurations in

Correct wiring methods for circuit breakers within distribution boxes are fundamental to ensuring electrical safety and compliance with established codes.

[Contact Us](#)



SCHOOL OF ELECTRICAL AND ELECTRONICS DEPARTMENT OF

1.1 Single Line Diagram The large network of conductors between the power station and the consumers can be broadly divided into two parts viz., transmission system and distribution system. Each part

[Contact Us](#)



How To Read The Distribution Box System Diagram

?Trace the outgoing line circuit?: Analyze the outgoing line circuits of the distribution box one by one, understand the load equipment and protection

[Contact Us](#)

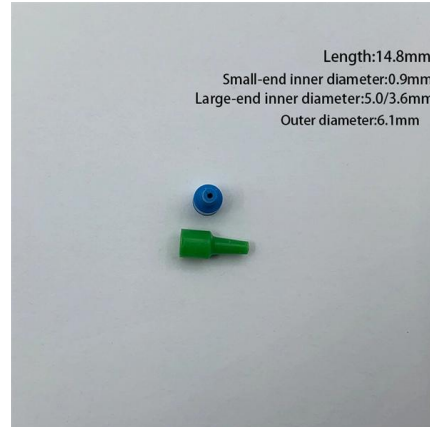




The Meaning and Function of Primary, Secondary, and Tertiary

Tertiary Distribution Box: The final connection box for each electrical appliance, which can be movable or fixed. Residual current devices must be the final protective device, with each

[Contact Us](#)



Radial And Ring Main Power Distribution Systems: What

Distribution transformers are mainly 3 phase pole mounted type. The secondary of the transformer is connected to distributors. Different consumers are

[Contact Us](#)

Key Diagram of 11kv/400v Indoor Substation

There are two 66 kV incoming lines marked 'incoming 1' and 'incoming 2' connected to the bus-bars. Such an arrangement of two incoming lines is called a double

[Contact Us](#)



Primary vs. Secondary Distribution: What Are The Key Differences

Understand the critical distinctions between primary (11kV-33kV) and secondary (400V-1kV) distribution systems, including equipment, protection schemes, and application scenarios.

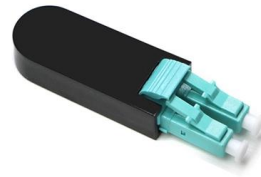
[Contact Us](#)



The basics of primary distribution circuits (substation

A single-phase line has one phase conductor and the neutral, and a two-phase line has two phases and the neutral. Some distribution primaries are

[Contact Us](#)



Gaming

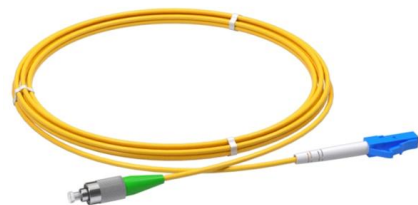
Find in-depth gaming news and hands-on reviews of the latest video games, video consoles, and accessories.

[Contact Us](#)

Ring Main Unit as an important part of Secondary

Ring Main Distribution Before getting into "What is RMU" question, let's say a word about the distribution system where RMU is often used. Distribution

[Contact Us](#)



The facts about switchyards, incoming and outgoing

Incoming and outgoing feeders in switchgear are equipped with circuit-breakers and disconnection and earthing switches. Current and voltage

[Contact Us](#)



Contact Us

For datasheets, pricing, or custom fiber access solutions, please visit:
<https://frindel.es>