

The incoming line to the distribution box was burned





Overview

Long cable runs can result in a voltage drop, which can be solved by using a heavy gauge wire. The neutral line plays a critical role in electrical systems, acting as a return path for unbalanced currents in a multi-phase setup. If there is no leakage and the line is tightened, the neutral line burns badly, then the neutral line return current is too large! For example, on the same working circuit, when installing wires, several live wires will be pulled to various devices, while the neutral wire only shares one. Typically, fuses or other devices are installed between the incoming/outgoing lines and the busbar inside the distribution box. Improper installation position The installation position of the distribution box should be convenient for operation and maintenance, and should be away from humid, high temperature and flammable and explosive environments. The electric utility I work for recently experienced a 4 kV Overhead Distribution Circuit line down, where all 3 phases of 4 kV circuit burned clear mid span. Span where 4 kV circuit burned clear had double-ended construction on both sides, so there was no significant tension on this span.



The incoming line to the distribution box was burned



How To Read The Distribution Box System Diagram

?Check electrical parameters?: First understand the basic electrical parameters of Distribution box so that you can have a general understanding of

[Contact Us](#)

The Complete Guide to Distribution Box: Installation, Types & More

Blog The Complete Guide to Distribution Box: Installation, Types & More By Admin Aug 2, 2025
No Comments # distribution box Introduction
Electrical systems power our homes, offices, and

[Contact Us](#)



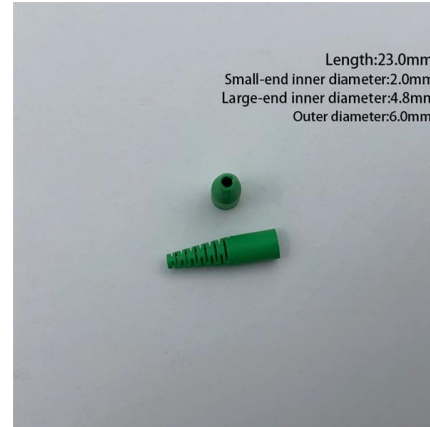
Quora

Hier sollte eine Beschreibung angezeigt werden, diese Seite lässt dies jedoch nicht zu.

[Contact Us](#)

Basic knowledge of distribution cabinet and distribution box

Incoming cabinet Function: the main function is to distribute electricity. The incoming cabinet is generally equipped with vacuum circuit breaker for disconnection. The



Causes of circuit breaker heating or burning



Use a current caliper to check whether the neutral line is a little flowing! There is current proof: the neutral point drifts! Then measure whether the total neutral line in the distribution box in front of the

[Contact Us](#)

Distribution Box: Types and Functions , Axis-Electricals

A distribution box ensures that electrical supply is distributed in the building, also known as a distribution board, panel board, breaker panel, or electric panel.

[Contact Us](#)



Precautions for incoming and outgoing lines of meter

Then, what matters should be paid attention to in and out of the meter box (small power distribution board)? Here is a brief introduction.
1? Rain proof measures

[Contact Us](#)





Full Guide to Understanding Septic Tank Distribution

Find out the crucial key to solving septic tank distribution box problems for optimal system performance - don't miss this essential guide!

[Contact Us](#)



Understanding Distribution Boxes: Your Guide to Power

Weatherproof Distribution Boxes These serve specific outdoor purposes, with rain, dust, and extreme temperatures sealed shut, protecting any

[Contact Us](#)

Understanding Distribution Boxes: A Comprehensive Guide

A distribution box, also known as a power distribution box or electrical distribution box, is used to distribute electrical power safely to multiple

[Contact Us](#)



A Definitive Guide To Distribution Boxes

The distribution box acts as the center of power distribution, distributing electricity to all connected devices. A distribution box, also known as a distribution board, panel board, breaker

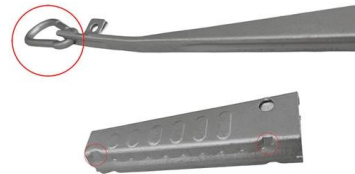
[Contact Us](#)



Burned power distribution box

XBimmers , BMW X6 Forum X5 Forum > BMW X5 Forums > General BMW X5 (E70) and X5M Forum (2006-2013) Burned power distribution box

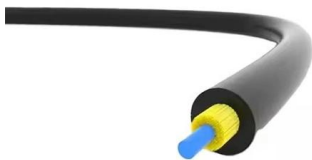
[Contact Us](#)



burning on cable and mcb in distribution box

Other post seems to suggest poor wiring in the distribution box as a "usual" thing? - the flat is newly bought (6 months ago) and we've got the electricity certification papers.

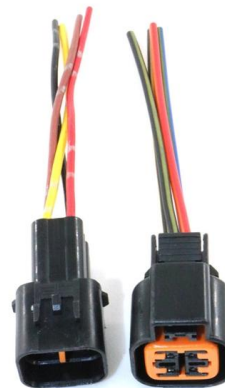
[Contact Us](#)



Problems and Precautions in the Operation of Distribution Boxes

Typically, fuses or other devices are installed between the incoming/outgoing lines and the busbar inside the distribution box. If an outgoing line is struck by lightning, causing the incoming line fuse to blow

[Contact Us](#)



Low voltage cable is selected for the incoming and outgoing lines of

When the leakage current is the rated leakage current, the breaking time of the leakage protector shall not be greater than 0.2S. The incoming and outgoing lines of the distribution box shall be low-voltage

[Contact Us](#)



Common faults of distribution box



For example, da88cm-ii motor phase loss protection module (Shanghai Product) can be installed in the distribution box to prevent the motor from burning due to low-voltage phase loss operation.

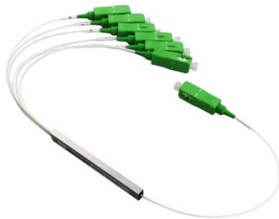
[Contact Us](#)



Why Neutral Lines Get Burned Out and How to Prevent It

Loose or poorly connected terminals in junction boxes, switchboards, or distribution panels can cause high resistance at the connection points. This resistance leads

[Contact Us](#)



Wiring Of Neutral Block In Distribution Box

If the indoor distribution box is designed according to the latest "code for electrical design of civil buildings", then the incoming lines of the distribution box must be three wires, one live wire, one

[Contact Us](#)



Causes of circuit breaker heating or burning

If there is no leakage and the line is tightened, the neutral line burns badly, then the neutral line return current is too large! For example, on the same working circuit, when installing wires, several live

[Contact Us](#)





4 kV Overhead Distribution Circuit Burned Clear

The electric utility I work for recently experienced a 4 kV Overhead Distribution Circuit line down, where all 3 phases of 4 kV circuit burned clear mid span. Span where 4 kV circuit burned

[Contact Us](#)



Septic System D-Box Problem Diagnosis

A "kiltered" Dbox is lingo for a "tipped distribution box". As you can read above, the D-box is basically a plumbing junction box that receives incoming effluent from the septic tank and routes it out to multiple

[Contact Us](#)

Main Breaker Switch Burnt Out. Why? How? What to do?

The main switch takes the incoming power supply from the mains and sends it to the various components inside the electrical panel. When the main switch is turned

[Contact Us](#)

LoRa handheld portable base station



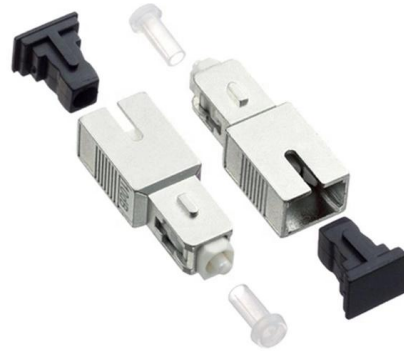
Wiring of the Distribution Board From Energy Meter to

How to Wire a Distribution Board? Distribution Board also known as "Panel Board", "Switch & Fuse Board" or "Consumer Unit" is a box installed in the building

[Contact Us](#)

I checked the breaker box and it was sparking. The electrician said the breaker was old and showed me the wire from the supply side of one of the breakers, and the insulation had melted

[Contact Us](#)



How to determine the size, installation method and

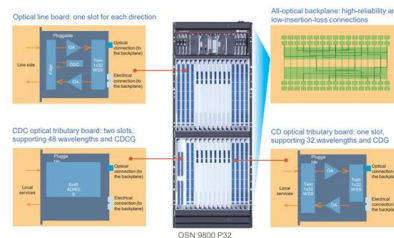
(1) Wiring method of distribution box 1)
Generally, the incoming line of power distribution box adopts five wire system, that is, a, B and C three-way phase line

[Contact Us](#)

What Causes a Circuit Breaker to Burn? - 4 Main Reasons

Learn what causes a circuit breaker to burn and how you can prevent it by reading this informative article.

[Contact Us](#)



What are the common problems of distribution boxes?

Wrong phase sequence The phase sequence in the distribution box should be correct, otherwise it may cause problems such as motor reversal and

[Contact Us](#)



Why Neutral Lines Get Burned Out and How to Prevent It

However, a burned-out neutral line is a common issue that can disrupt operations, cause safety hazards, and damage electrical equipment. Understanding the

[Contact Us](#)



Initial Cause of Distribution Box Fire

Fiber and so on, thus causing fire. Second, Prediction of Distribution Box Fire Before the distribution box is on fire, there is a kind of precursor, which should be paid special attention to. Because of

[Contact Us](#)

Power Distribution Box

Be sure that the power distribution box has sufficient power provided to it. Long cable runs can result in a voltage drop, which can be solved by using a heavy gauge wire.

[Contact Us](#)



Contact Us

For datasheets, pricing, or custom fiber access solutions, please visit:
<https://frindel.es>