

# **The core switch does not have option 43**





## Overview

---

This document describes how to use DHCP Option 43 and provides sample configurations for DHCP Option 43 for lightweight Cisco Aironet access points.



## The core switch does not have option 43

---



### How to Set Up DHCP Option 43 to Provide Controller IP

The client must include Option 43 in the Parameter Request List (Option 55) to indicate it expects vendor-specific information in the DHCP Offer. The AP must

[Contact Us](#)

### Aruba DHCP option 43 configuration , Wireless Access

I have tried to configure Aruba access point to discover the controller using option 43 since the controllers and the access points are separated by layer three.

[Contact Us](#)



### Cisco Networking Services Configuration Guide, Cisco IOS XE

Cisco Networking Services Parameterized Commands The values configured using the cns config initial, cns config partial, cns config id, cns event, cns exec, and cns trusted-server all-agents

[Contact Us](#)



### Windows DHCP option 43 not working

The option 43 does not work the same way in all vendor. The other option you have is add the WLC on the AP manually by using the command

[Contact Us](#)



### **RUCKUS Forums**

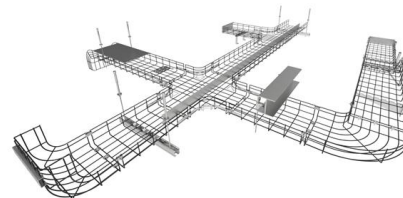
The DHCP option 43 is one of many methods for the RUCKUS AP to discover its controller. This option is configured in the DHCP server and must be masked.

[Contact Us](#)

### **Solved: DHCP Option 43**

hi, i've never used this command in our wireless/WLC deployments can someone advise if we really need this (or not) on DHCP pool? ip dhcp pool WIFI option 43 ip what are some

[Contact Us](#)



### **DHCP Option 43 Vendor-Specific Configuration**

Option 43 is a vendor-specific option. If the DHCP server receives a DHCP message that requests Option 43 information, it will return a reply that carries Option 43 to

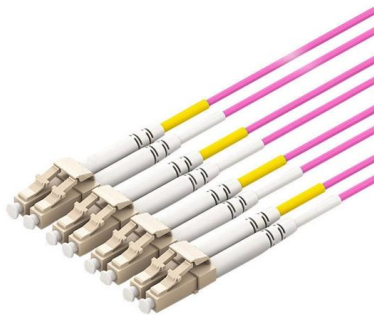
[Contact Us](#)



## Using DHCP Option 43

If you've ever had to work in depth with DHCP, you've probably worked with the common options. But even the pros can find it difficult to work with Option 43

[Contact Us](#)



## Configuring DHCP Option 43 and Option 60

The sub-options are all included in the DHCP offer as type-length-value (TLV) blocks embedded within Option 43. Vendors can define these sub-options as per their wish.

[Contact Us](#)

## DHCP Option 43 for Ruckus AP

This switch will have several Ruckus 500 APs hanging off of it. I have configured the ports as follows: Switchport trunk encap dot1q Switchport mode trunk Switchport native Vlan 2 I have

[Contact Us](#)



## DHCP with option 43

Suppose you have 2 switches one doing inter vlan routing and another connected to it via trunk interface. Now the second switch has many physical interfaces on which you can connect

[Contact Us](#)



## Cisco Aironet 1570 Series Outdoor Access Point Hardware Installation

Cisco Aironet 1570 series access points use a type-length-value (TLV) format for DHCP Option 43. DHCP servers must be programmed to return the option based on the access point

[Contact Us](#)



### Solved: DHCP option 43 Config

Solved: Need to know step by step DHCP option 43 configuration. Do we make these configuration on DHCP server or Switch ? bit confused .

[Contact Us](#)

### Configuring DHCP Option 43 and Option 60

Inside option 43, we can have encapsulated vendor-specific sub-option codes between 0 and 255. The sub-options are all included in the DHCP

[Contact Us](#)



### Cisco DNA/PnP feature via a Non-PnP switch : r/Cisco

I'm pretty sure I have my answer, but wanted to check with others before giving up on this situation. When using DNA's PnP feature, I can get it working successfully by plugging directly to a router that

[Contact Us](#)



## WLC DHCP Option 43

In the wireless field, DHCP options 43 and 60 are quite common. Let's discuss each one individually. By using DHCP option 43, you don't have to

[Contact Us](#)



## Solved: DHCP option 43 Config

Need to know step by step DHCP option 43 configuration. Do we make these configuration on DHCP server or Switch ? bit confused .

[Contact Us](#)

## Case Study: An AP Fails to Go Online Across Network Segments Due

According to the preceding analysis, the Option 43 configuration on the core switch is incorrect, and the CAPWAP source address of the WAC is not specified. Modify the Option 43 configuration on the

[Contact Us](#)

Length:33.5mm  
Small-end inner diameter:4.0mm  
Large-end inner diameter:6.0mm



## Configure DHCP OPTION 43 for Lightweight Access Points

It is possible to convert a group of APs from EWC to CAPWAP mode via option 43 by using the F2 start. Refer to the Global Use AP deployment guide for more details on this mode. The semantics of DHCP

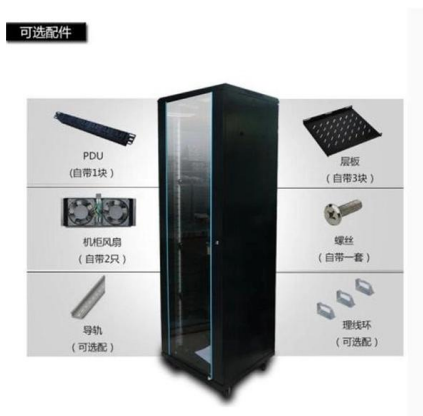
[Contact Us](#)



## DHCP Option 43 issues since migrating to Windows DHCP Server

The problem with that is based on subnet our AP's need to join specific controllers so Option 43 is preferred. Before moving to Windows DHCP Option 43 worked correctly so I am fairly

[Contact Us](#)



## Understanding DHCP Option 43 - Jeff Schertz's Blog

Understanding this clearly is key to formatting the information correctly for use with any type of DHCP service. Since Option 43 is actually comprised of multiple sub

[Contact Us](#)

## DHCP Option 43 Vendor-Specific Configuration

If the DHCP server receives a DHCP message that requests Option 43 information, it will return a reply that carries Option 43 to the requesting client. This option

[Contact Us](#)



Focus creates quality products



## Re: DHCP option 43 value in Microsoft DHCP, for Cisco switches

? 02-19-2025 08:49 AM - edited ?02-19-2025 08:50 AM @jan Option 43 for switches is used for the Plug and Play process, which is a very popular time saver for deploying new hardware without first having

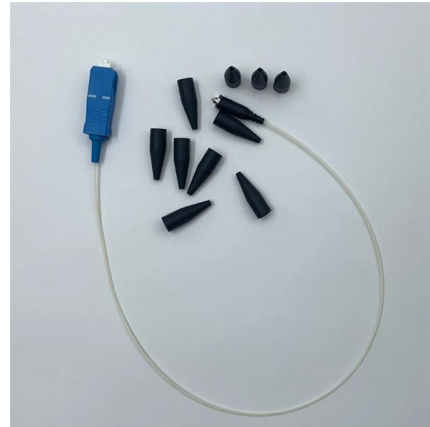
[Contact Us](#)



## Windows-Based DHCP Server

Configure a Windows DHCP server to send option 43, option 60, and option 52 to clients through DHCP packets.

[Contact Us](#)



## Contact Us

---

For datasheets, pricing, or custom fiber access solutions, please visit:  
<https://frindel.es>