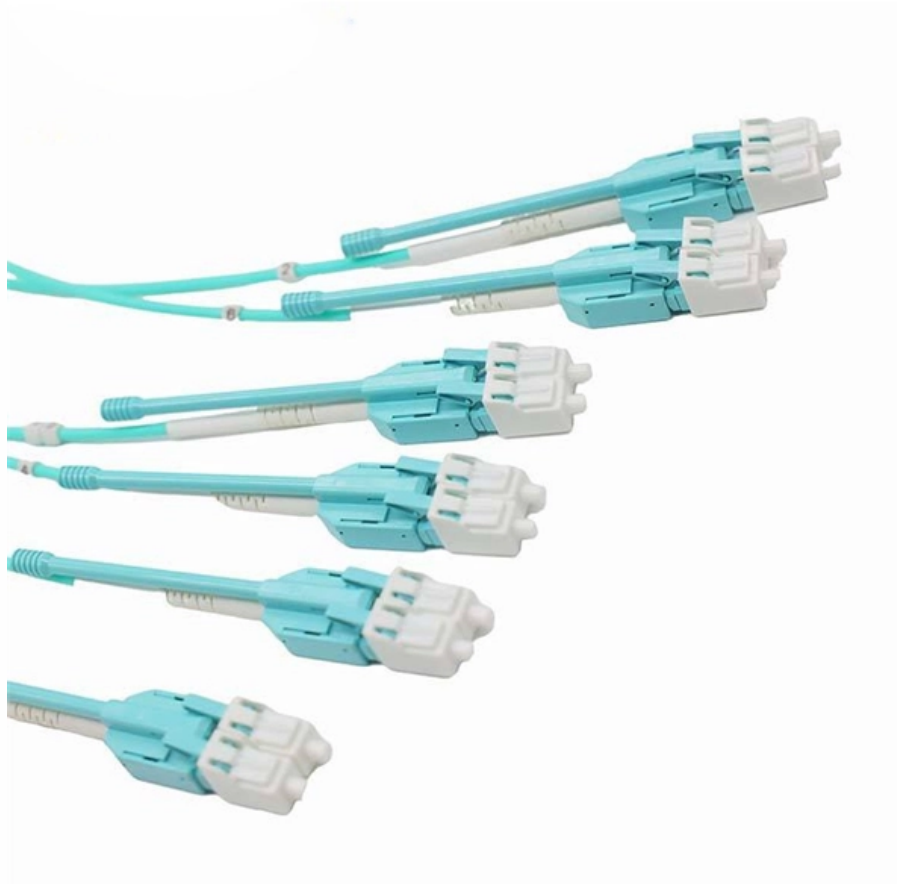


The cable tray was not sealed at the flared end





Overview

The raceway or flanged opening shall be sealed or covered to prevent debris from entering the enclosure through the opening. Cable tray failures can cause operational disruptions, equipment damage, and safety risks. This guide discusses common cable tray problems, from loosening and corrosion to grounding issues and installation errors, along.



The cable tray was not sealed at the flared end



Cable Trays in Class 1 Div 2 area , Eng-Tips

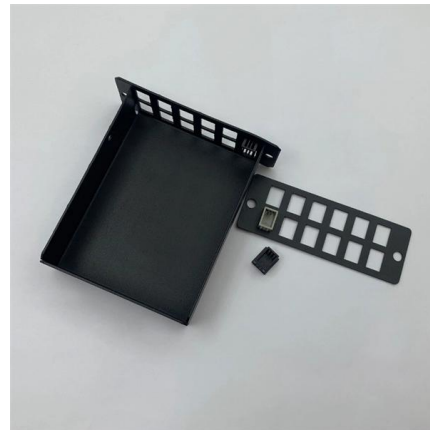
I'm having a heated discussion on this. The question is if I am using cable tray, and Type TC cable, is there some special sealing required at the boundary

[Contact Us](#)

Flare Stack Cable high-temperature solution

TWC has developed multiple types of cable which outlast other similar cables. TWC worked with multiple Flare and Combustion companies to design

[Contact Us](#)



Cable Tray Questions , Cable Tray Institute

Our existing cable tray system is heavy bonded and grounded. If this is a code violation, could you refer me to the publication? Answer: Low energy systems may not be required to be grounded for shock

[Contact Us](#)

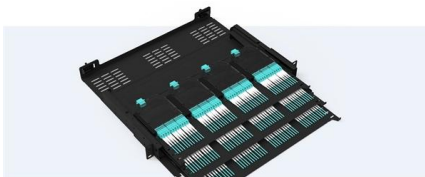
Understanding Cable Tray Safety Hazards: A Detailed

Learn about common cable tray safety hazards and how to prevent risks such as cable damage, electrical short circuits, moisture intrusion, and more.



Pre-Terminated Patch Panel

-  Standard 19" width
-  Max 144 fibers in 1U
-  Ultra-High Density Ready



Dual-row, easy install & maintain



Lightweight ABS MPO connector



Premium sheet metal with multi-coating

Seals on Cables in Tray from Non-Haz to Haz

You could use various tray cable bulkhead sealing walls without raceways at all OR you could simply leave the opening unsealed. In either case - still no boundary seals are required.

[Contact Us](#)

Best Practice Guide to Cable Ladder and Cable Tray Systems

Cable ladder systems and cable tray systems are designed for use as supports for cables and not as enclosures giving full mechanical protection. They are not intended to be used as ladders, walk ways

[Contact Us](#)



2005

Ventilated trough cable tray is often used when the specifier does not want to use ladder cable tray to support small diameter multiconductor control and instrumentation cables.

[Contact Us](#)



Cable tray of Generator High voltage 11KV



cable is not

If they tray supports are fixed into the ground in such a way that they could introduce an potential (Earth potential) that could be different from the

[Contact Us](#)



How to Fix Common Cable Management Issues using

Discover common cable management problems and how cable tray accessories effectively solve them to ensure safety and performance.

[Contact Us](#)

Prevent Fire and Electric Hazards When Cable Trays Used

If not designed and installed properly, wiring inside cable trays may pose hazards such as fire, electric shock, and arc-flash blast events.

[Contact Us](#)



RFS RADIAFLEX® CABLES Installation Guideline

Keep cable end always sealed - make sure that no humidity, dust or dirt are able to penetrate. Do not leave metallic particles when cutting the cable or installing the connector.

[Contact Us](#)





Code Q& A: NEC Requirements for , EC& M

Test your knowledge of the NEC. (A) Through Bushed Conduit or Tubing. Individual conductors or multiconductor cables with entirely nonmetallic sheaths, can enter

[Contact Us](#)



392.46 Bushed Conduit and Tubing.

Individual conductors or multiconductor cables with entirely nonmetallic sheaths shall be permitted to enter enclosures through openings associated with flanges from

[Contact Us](#)

Best practice guide to cable ladder and cable tray

Cable ladder and cable tray systems The following recommendations are intended to be a practical guide to ensure the safe and proper installation of

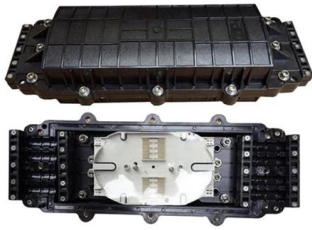
[Contact Us](#)



5 Common Tube Flaring Problems and How to Solve Them

5 Common Tube Flaring Problems and How to Solve Them Tube flaring is a crucial process in many industries, including automotive, HVAC,

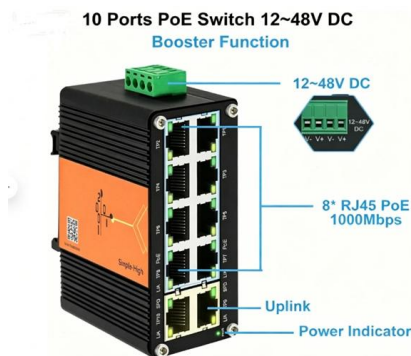
[Contact Us](#)



Thermo-Trex® Flare Stack Cable

Thermo-Trex® Flare Stack Cable is a high-temperature resistant flexible cable that is suitable for all flare stack igniter applications. Its unique cable design and voltage

[Contact Us](#)



Cable Tray Faults and Solutions

Cable Tray Faults Comparison and Solutions We understand that low-voltage cables have relatively low insulation performance requirements, and during operation, the current is generally large. Therefore,

[Contact Us](#)

Solved: Cable tray Trim errors

There's a bunch of reasons it could be happening but I'll go through the most common things to try to see if it resolves it. Have you cut a section and used the align tool to ensure they are

[Contact Us](#)



The Ultimate Guide to Flare Connections



Flare connections work by creating a seal between the flare nut and the flare fitting.

[Contact Us](#)



Properly bonding/grounding of telecommunications cable tray

Can someone explain to me or provide a code reference that thoroughly explains the proper way to ground low voltage telecom cable tray? I'm having a hard time interpreting whether or

[Contact Us](#)



Device seal with tray cable. Needed or not?

Device, Union, seal, then cable gland to open air tray cable is how they are installed. Sounds like you're closing the barn door after the horses escaped. An EYS is fine to seal raceway,

[Contact Us](#)

Fiber Cable Tray System

Installation and maintenance of cable tray wiring systems should be performed by a minimum of two qualified technicians. For the purposes of this guideline, a qualified technician is one who is familiar

[Contact Us](#)





Common Issues in Steel Cable Tray Installations

Follow cable fill limits specified in cable tray design standards. Ensure continuous grounding connections along the metal cable tray to the building's

[Contact Us](#)



Cable installation in cable tray , Information by Electrical

Hello, I have a new cable tray and need to get cables from existing cable tray into the new one. The new cable tray is perpendicular to the old one. Old cable tray stops when it reaches the

[Contact Us](#)



Practices for grounding and bonding of cable trays

A bare copper equipment grounding conductor should not be placed in an aluminum cable tray due to the potential for electrolytic corrosion of the aluminum cable tray in a moist environment. For such

[Contact Us](#)

Cable Tray Faults and Solutions

Here we introduce various types of faults that may occur in cable trays and their solutions in details, hoping we can help you in some way.

[Contact Us](#)





Cable Tray Failures: Types, Causes, and Prevention

However, like any other infrastructure, cable trays are prone to failures that can result in serious safety hazards, financial losses, and downtime.

[Contact Us](#)

Practices for grounding and bonding of cable trays

Grounding and bonding of cable trays There are three wiring options for providing an EGC in a cable tray wiring system: An EGC conductor in or on

[Contact Us](#)



Common Cable Tray Failures and How to Resolve Them

Learn about common cable tray failures, their causes, and practical solutions for ensuring the longevity and safety of your cable tray system, including

[Contact Us](#)

Contact Us

For datasheets, pricing, or custom fiber access solutions, please visit:
<https://frindel.es>