

The cable tray is fixed to the gantry





Overview

A gantry cable tray serves as a structured pathway, supporting and organizing various cables while ensuring they remain safe and manageable. The cable support lengths and fittings can basically be designed as cable trays, cable ladders or mesh cable trays, in which cables are routed. Fittings can, on the one hand, be used for horizontal or vertical changing of the routing direction or, on the other, to change the height or width of the. Cable ladder systems and cable tray systems shall be manufactured in accordance with BS EN 61537, channel support.



The cable tray is fixed to the gantry



Cable tray

In the electrical wiring of buildings, a cable tray system is used to support insulated electrical cables used for power distribution, control, and communication. Cable

[Contact Us](#)



Decoding Cable Tray Support Structures: Tips and Insights

Discover efficient cable tray support structures for optimal cable management. Learn about hanger, wall-mounted, and Unistrut systems for safer

Best Practices for Installing Cables in Trays

Quick Installation Checklist (Key Steps) Cable tray cable installation generally follows these steps: Inspect cables before installation Prepare and

[Contact Us](#)



Guide to cable support systems

Four different mesh cable tray types are available, depending on the requirements, area of application and cable quantity. The innovative Magic connection system of the GRM and G-GRM mesh cable

[Contact Us](#)



Beama Best Practice Guide , Installation Of The System , Cable

The following recommendations are intended to be a practical guide to ensure the safe and proper installation of cable ladder and cable tray systems and channel support and other support systems.

[Contact Us](#)



What is a Gantry in Construction?

Gantries are pivotal structures in the realm of construction and engineering, designed to support equipment, facilitate material handling, and

[Contact Us](#)



Gantry Crane Essentials: Components and Working

Delve into the world of gantry cranes with our comprehensive guide. Explore the essentials, dissecting components, and unraveling working mechanics.

[Contact Us](#)

INSTALLATION GUIDE



Center hung tray supports allow for quicker and easier cable installation by allowing cables to be deposited into tray systems from each side. There is a maximum load capacity per hanger of 318 kg

[Contact Us](#)



Best Practice Guide to Cable Ladder and Cable Tray Systems

Cables should be fastened to the cable ladder and/or cable tray using cable cleats or cable ties to prevent movement of the cables under normal use and during fault conditions (Figures 25a and 25b).

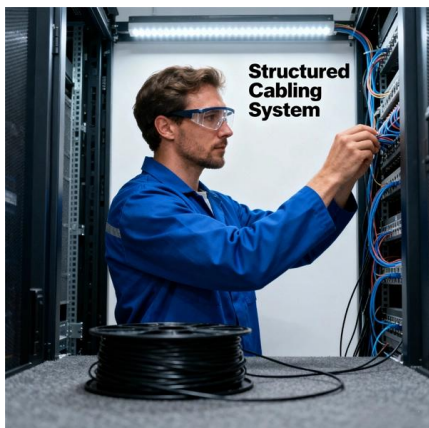
[Contact Us](#)



Types of Cable Trays: Ladder, Perforated, Basket, Solid

Cable trays support insulated electrical cables in industrial and commercial settings. There are several types of cable trays, including ladder,

[Contact Us](#)



Types of Cable Trays: Ladder, Perforated, Basket, Solid

Perforated rungs on a ladder-type tray securely fasten cables using cable ties. These trays ensure maximum airflow around the cables, promoting

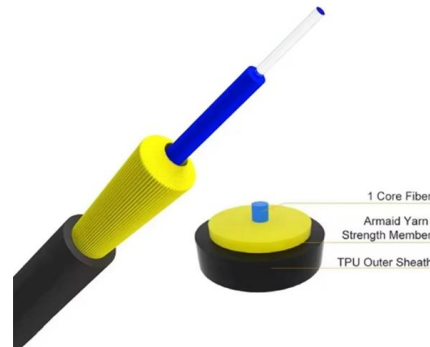
[Contact Us](#)



Cable Tray Trunking & Ladder Installation Method for

Cable Tray, trunking and ladder supports will be install directly to slab surface and using other services supports will not be allowed . Installation of cable trays,

[Contact Us](#)



What is a Gantry Crane? A Closer Look at the Different Types and Design

In this article, we'll break down the different types of gantry cranes, as well as discuss considerations that affect the design and

[Contact Us](#)

Beama Best Practice Guide , Installation Of The System , Cable

However, in the context of a complete cable ladder or cable tray system the main importance of the fixed beam configuration is that some appreciation of its properties, along with those of a simple beam

[Contact Us](#)



How do I mount a cable tray to the wall and floor using an end bracket

The end of the cable tray is attached to the wall or the floor with two end brackets (RÄF). The end bracket is fixed to the shelf using the screw set included with the end bracket.

[Contact Us](#)



Gantry Crane Installation Guide: Foundation & Safety

Learn key gantry crane installation steps, including site preparation, foundation checks, frame assembly, commissioning, load testing and safety

[Contact Us](#)



How to Choose the Right Crane Cable of Fixed Gantry

If customers want to choose a set of gantry cranes that are of reliable quality and comply with all safety regulations, then SEVENCRAVE fixed gantry

[Contact Us](#)

Best practice guide to cable ladder and cable tray

The following recommendations are intended to be a practical guide to ensure the safe and proper installation of cable ladder and cable tray systems

[Contact Us](#)



Basics of Gantry Cable Tray Installation Techniques

A gantry cable tray serves as a structured pathway, supporting and organizing various cables while ensuring they remain safe and manageable. These trays are essential for preventing

[Contact Us](#)

Improving cable management for industrial



cranes and

When igus approached Kasen Cranes with a cable management alternative, the industrial cranes and gantries specialist was quick to spot an

[Contact Us](#)



What are Cable Trays & Different Types of Cable Trays

Learn what cable trays are & explore the various types, benefits, and purposes. Gain insights into how electrical cable trays can revolutionize your

[Contact Us](#)



Gantry Crane Installation: Complete Details for Smooth Installation

Gantry Crane Installation Add gear oil to the reducer before installation Lubrication: Gear oil effectively lubricates the gears and bearings inside the reducer, reducing friction and wear, thus extending the

[Contact Us](#)



Method Statement installation of Cable Trays and Ladders

This method statement covers the site installation of the cable tray & ladders and the requirements of checks to be carried out.

[Contact Us](#)

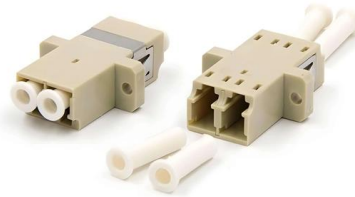




FAQ , Cable Tray Institute

Question: Is it necessary to provide tie-down cables installed in a cable tray? Answer: Yes; cables are tied down in cable trays to keep the cables in the cable tray, to maintain spacing between cables, or

[Contact Us](#)



Cable Tray Technical Guide A practical guide to product selection and

Cable tray is considered to be a system. It must provide continuous support for cables, and the electrical continuity of the cable tray system must be maintained.

[Contact Us](#)

Contact Us

For datasheets, pricing, or custom fiber access solutions, please visit:
<https://frindel.es>