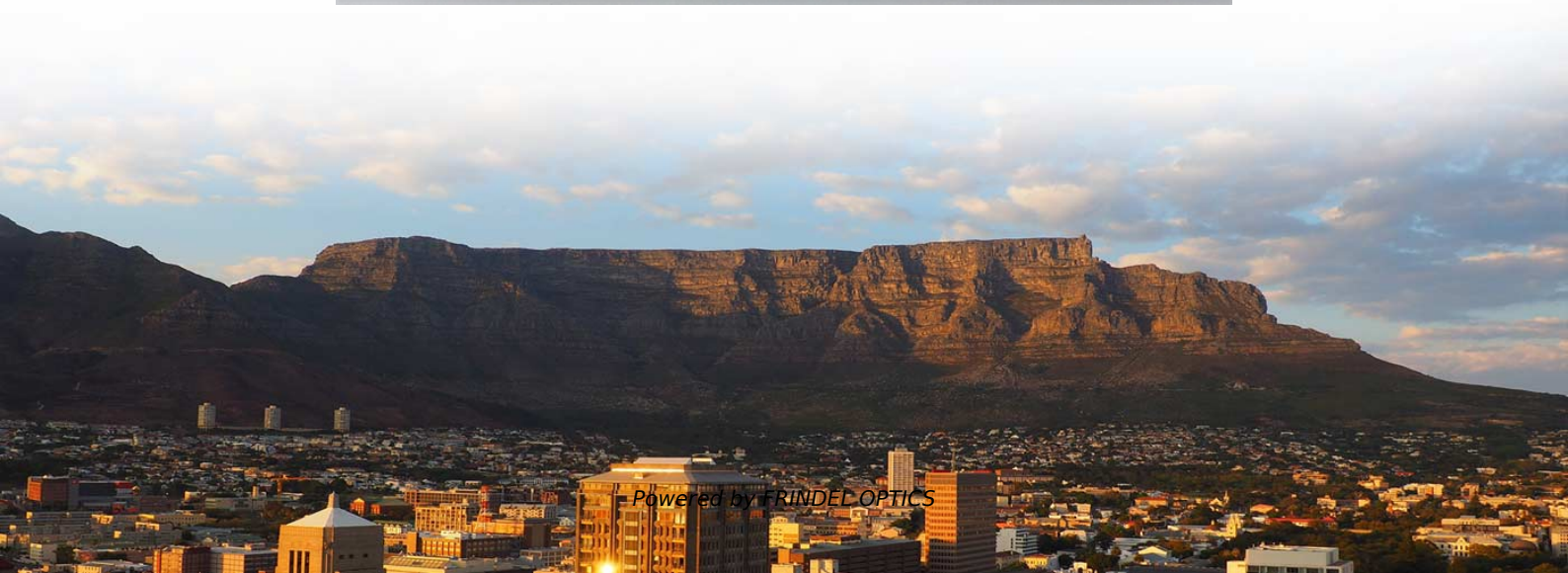


Terminal Box Anti-Trace Configuration Scheme





Terminal Box Anti-Trace Configuration Scheme

A Comprehensive Guide to Terminal Block Schematics:



By referring to the terminal block schematic, technicians and engineers can easily identify the wiring configuration and troubleshoot any connection issues. Terminal

[Contact Us](#)

Terminal Devices

Terminal boxes can be changed on a zone by zone basis at the project level. All systems are required to have a terminal device. Constant volume systems don't always have a physical terminal device. In

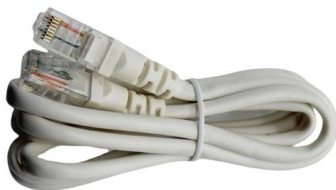
[Contact Us](#)



PROJECT TITLE (FOOTER)

All terminals or connectors found damaged or making improper contact after installation shall be removed and replaced. The jacket and the insulation shall be cut back to approximately one quarter

[Contact Us](#)



STAHL 8146/1 OPERATING INSTRUCTIONS MANUAL Pdf Download

Intended Use The terminal boxes 8146/1 and /2 are used to distribute electric energy and / or electric signals in hazardous areas. They are explosion-protected equipment certified for use in hazardous



How to select a terminal block white paper

Eaton offers feed-through terminal blocks and/or barrier strips that expect wire to have the conductive path managed through the housing in the rear of the block. There are varying voltage ratings and

[Contact Us](#)

Common Trace Transmission Problems and Solutions

Composer 14 Modifications Trace DSK
TMS320C6416 13

[Contact Us](#)



System Management Configuration Guide, Cisco IOS XE 17.17.x

Information About Trace Management How to Configure Conditional Debugging Configuration Examples for Trace Management Additional References for Trace Management

[Contact Us](#)





Trace Configuration and Decoding using Command Line

This tool does not configure all the trace modules that are required to output the DDDI trace to the debug probe or the trace buffer (Central Funnel and C-DTC).

[Contact Us](#)



Available Rules

Available Rules Tip To view the list of available rules, run Tracee with the --list flag.

[Contact Us](#)

Trace Configuration and Decoding using Command Line

Standalone trace configurator tools are used to configure individual trace sources or the platform trace aggregators (Platform Configurator). More than one configurator should be run in order to activate all

[Contact Us](#)



AN-1057 Ten Ways to Bulletproof RS-485 Interfaces (Rev. B)

The optimal configuration for the RS-485 bus is the daisy-chain connection from node 1 to node 2 to node 3 to node n. The bus must form a single continuous path, and the nodes in the middle of the

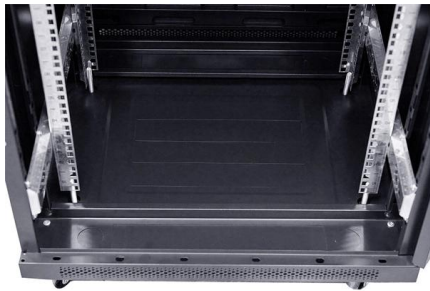
[Contact Us](#)



General Commands Reference Guide T

Using the command group TargetSystem, you can start new TRACE32 PowerView instances from within a running instance and keep an overview of these instances. The instances started with

[Contact Us](#)



Configuration of Terminal Block Diagram

We recommend that you transfer the complete contents of the configuration to an XML compatible editor (Notepad++ or similar), carry out the adaptation there etc contents of the terminal block diagram

[Contact Us](#)

Packet Trace

Packet-trace configuration requires data-plane memory. On systems where data-plane memory is constrained, carefully consider how you will select the packet-trace values.

[Contact Us](#)



How to Utilize Trace Components on i RT1180

This application note explains the basic settings of trace components in the TRACE32 user interface for a better illustration on how to use these trace components.

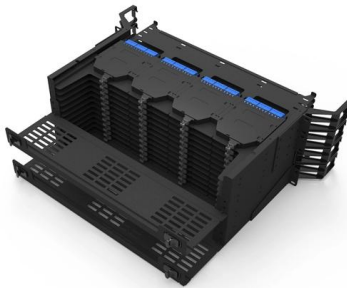
[Contact Us](#)



System Management Configuration Guide, Cisco IOS XE Dublin

How to Configure Conditional Debugging
Conditional Debugging and Radioactive Tracing
Configuring Conditional Debugging Collecting
Trace Files Copying tracefiles off the box

[Contact Us](#)



System Management Configuration Guide, Cisco IOS XE 17.13.x

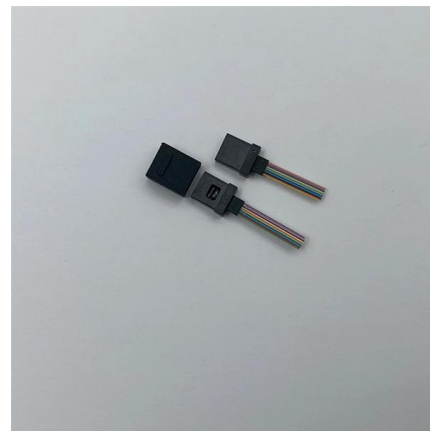
The following table shows the available tracing levels, and provides descriptions of the message that are displayed with each tracing level. The tracing levels listed in the table are from the

[Contact Us](#)

Training Arm CoreSight ETM Tracing

Configure an optional delay with Trace.TDelay , ,
When the trace trigger occurs, the recording will stop after the specified delay.

[Contact Us](#)



Anti-Virus

Preloading configuration parameters from configuration files In some deployments, configuration settings need to be provided to bowbridge Anti- Virus without them being configured at the SAP

[Contact Us](#)



System trace

You can set region specific traces such as component specific trace, full trace, auxiliary trace and user trace. These traces can be set either when the region is running or stopped.

[Contact Us](#)



Microsoft Word

We consider such a scheme appropriate instead of an across-the-board inhibit for the clean configuration regardless of flight regime (which is not considered to provide the best overall level of

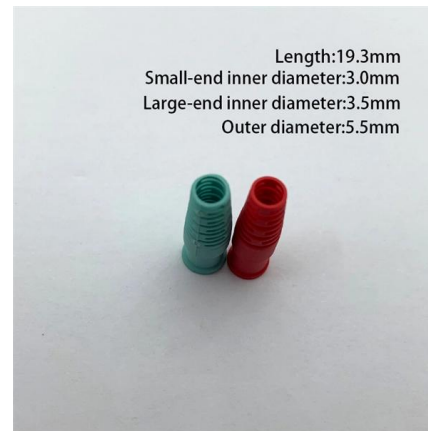
[Contact Us](#)



ISE profiling design guide: profiling services global

This guide will also use the convention of LHS as shorthand for "Left-Hand Side" and RHS for "Right-Hand Side" when referring to left and right panels

[Contact Us](#)



GitHub

Welcome to the Awesome ComfyUI Custom Nodes list! The information in this list is fetched from ComfyUI Manager, ensuring you get the most up-to-date and

[Contact Us](#)



AC 20-151C

We consider such a scheme appropriate instead of an across-the-board inhibit for the clean configuration regardless of flight regime (which does not provide the best overall level of safety for

[Contact Us](#)



Contact Us

For datasheets, pricing, or custom fiber access solutions, please visit:
<https://frindel.es>