

Techniques for laying horizontal cable trays





Techniques for laying horizontal cable trays



Core Principles for Electrical and Instrumentation Cable

Straightforward Pathways: Cable trays should follow the shortest practical route between equipment, minimizing the need for unnecessary bends and junctions.

[Contact Us](#)

How Does Cable Tray Installation Work?

Explore Harbor Energy Solutions' guide on cable tray installation, detailing benefits, considerations, and step-by-step processes.

[Contact Us](#)



Precautions for Cable Tray Installation

Cable Tray Installation Guide The correct installation of cable trays is crucial for establishing a reliable and efficient cable system. It ensures that cables are

[Contact Us](#)

Typical Design Philosophy of Cable Trays for Power

To avoid damage during cable laying, cable trays and accessories shall have no scales, abrasive, rough surfaces or cutting edges. Cables shall be clamped or



Cable Tray Installation

4. What materials are commonly used for cable trays? Depending on the application and environment, fiberglass, aluminum, and steel (galvanized or stainless) are typically used. 5. What are the standard

[Contact Us](#)



Cable Tray Spacing Standards for Installation and Safety

Key Factors Impacting Cable Tray Spacing
Understanding cable tray spacing is key to meeting safety regulations and maintaining system

[Contact Us](#)



Mastering Cable Tray Installation , Step-by-Step Guide for a Seamless

Mastering cable tray installation is crucial for creating a safe, organised, and efficient cable management system. By following this step-by-step guide, you can ensure a seamless setup that

[Contact Us](#)





Installation Of Cable In Cable Trays: NEC, Safety

Installation of Cable in Cable Trays ensures proper routing, cable management, NEC compliance, grounding, fire safety, and load capacity.

[Contact Us](#)



Cable Tray Technical Guide A practical guide to product selection and

A practical guide to product selection and installation This guide for engineers and installers has been developed by ABB as a practical reference regarding cable tray characteristics, installation, and

[Contact Us](#)



EFFICIENT FIELD TERMINATION



1. PREPARE - Strip and clean the fiber

2. INSERT - Fast and easy insertion

3. LOCK - Secure connection achieved

No Polishing | No Epoxy

Eliminates cable excess length and pigtail splice storage. Designed for high-efficiency onsite installation.

Best Practice Guide to Cable Ladder and Cable Tray Systems

This publication is intended as a practical guide for the proper and safe* installation of cable ladder systems, cable tray systems, channel support systems and associated supports.

[Contact Us](#)

Pre-Terminated Patch Panel

- Multi-application support
- Flexible configuraton
- Modular design




Cable Gland Plug
28mm Cable Gland Plug

MPO-EC up to 96 cores
MPO direct connection 48 ports

Mounting Bracket
Semi-open mounting holes

Cable Tray Technical Guide A practical guide to product selection and

Cable Tray Technical Guide A practical guide to product selection and installation This guide for engineers and installers has been developed by ABB as a practical reference regarding cable tray

[Contact Us](#)



Instrumentation Cable trays Installation in vertical

The article describes a improvement for better life and easy maintenance for instrumentation cable trays for industry. The practices if applied

[Contact Us](#)



Cable Tray Installation

Learn everything about cable tray installation with our complete guide. Discover types, steps, and safety tips for efficient electrical cable management.

[Contact Us](#)

Cable Tray Installation Method Statement

Ensure the gaps between the trays which are mounted in tires are sufficient for the cable laying as per the approved installation details drawings. Cable Ladder and

[Contact Us](#)



Cable Tray Installation and Cable Handling Method

Efficient cable tray installation and proper cable handling are critical for ensuring the reliability and safety of electrical systems. Adherence to these guidelines is

[Contact Us](#)

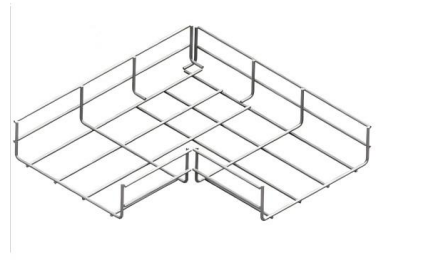
A Guide to Installing and Supporting



Electrical Cable Trays

A professional guide to installing electrical cable tray systems per NEC Article 392. Covers support, securing cables, and fill calculations.

[Contact Us](#)



Mastering Cable Tray Installation , Step-by-Step Guide for a Seamless

Learn how to install cable trays correctly. Get the ultimate step-by-step guide on setting up a seamless and reliable cable management system.

[Contact Us](#)

Method Statement for Installation of Cable Tray or Trunking

Site fabrication shall not be permitted. Where cable tray carries 13.8 kv cable, a tray lid shall be installed. Provide sufficient space around cable tray for

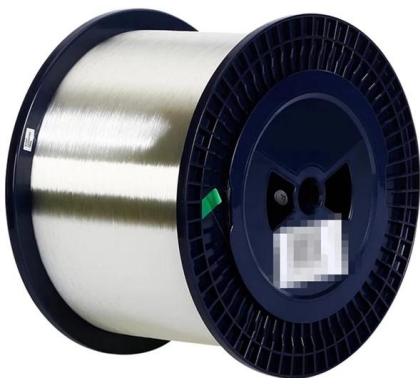
[Contact Us](#)



Cable Laying Standards: A Comprehensive Guide for

Cable laying standards are essential to ensure the safety, stability, and longevity of cable systems in industrial and infrastructure projects. This guide outlines key

[Contact Us](#)



Horizontal Cable Tray System Installation , Telecom System



This article is about Horizontal Cable Tray System Installation of Building Telecom Distribution System as per International Codes and standards.

[Contact Us](#)



Cable Laying: Everything You Must Know

After determining the routing of the cabling, a structured cabling project initially needs to consider the laying of cable trays, which can be made of metal, conduit, or

[Contact Us](#)



Method Statement installation of Cable Trays and Ladders

This method statement covers the site installation of the cable tray & ladders and the requirements of checks to be carried out.

[Contact Us](#)

High Quality Aluminum Housing with Compact Size

- Sturdy and Durable
- Anti-corrosion



Twelve high voltage cable construction techniques used

This laying technique involves installing ducts or pipes in trenches (by horizontal drilling or other ways) and then pulling cables into them (see Figure 2).

[Contact Us](#)





Best Practices for Installing Cables in Trays

Learn the best practices for installing cables in trays. This guide covers essential steps, technical requirements, and key details

[Contact Us](#)



Best Practice Guide to Cable Ladder and Cable Tray

Cable ladder and cable tray systems The following recommendations are intended to be a practical guide to ensure the safe and proper installation of

[Contact Us](#)

Contact Us

For datasheets, pricing, or custom fiber access solutions, please visit:
<https://frindel.es>