

Technical Support for 25G Optical Router





Technical Support for 25G Optical Router



Inneos , Fiber Optic Components for OEMs , Optical

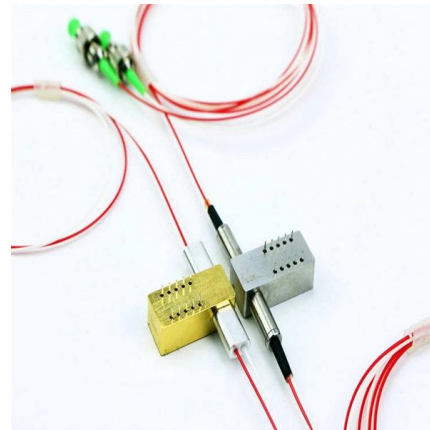
Introducing our BRAND NEW 25G Optical Transceiver! Meet Cheetah: a 25G Optical Transceiver based on Inneos' OptoBGA platform. By combining optical

[Contact Us](#)

SFP28 25G LR Transceiver: Complete Guide for 25G Ethernet

Whether you are upgrading a data center network, deploying 25G spine-leaf architecture, or evaluating third-party optics, this guide will help you determine if an SFP28 25G LR module is the right choice

[Contact Us](#)



25G Optics , HPE Juniper Networking US

Ensure the reliability of your network with Juniper's full suite of system and module-level power, thermal, and DVT testing, software integration into Junos® OS and

[Contact Us](#)

What is 25 Gigabit Ethernet? A Beginner's Guide

Examine the features of 25 Gigabit Ethernet and why it is a vital upgrade from 10 Gigabit Ethernet for future-proof networks.

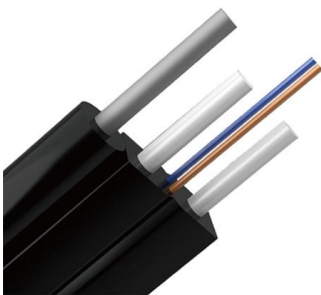
[Contact Us](#)



NETGEAR Customer Support

Find expert support for NETGEAR home products, including routers, Orbi Mesh Systems, and mobile hotspots. Access resources, warranty details, and troubleshooting guides to keep your home

[Contact Us](#)



Nokia 7250 IXR-e and IXR-e2 series

The Nokia 7250 IXR-e and IXR-e2 series feature native 25GE ports that support 1GE, 10GE, and 25GE transceivers. This allows seamless migration from 1GE to 10GE to 25GE speeds without the need to

[Contact Us](#)



Types of 25G SFP28 transceivers vs QSFP28 vs

Types of 25G Optical Transceivers 25G SFP28 SR
The SFP28 SR transceiver is a single-channel, pluggable fiber SFP28 optical module for 25

[Contact Us](#)





Arista 25G Transceivers and Cables

Arista supports a range of 25G copper cables and optical transceivers compliant to IEEE standards and industry MSAs. Arista's 25G connectivity solutions include copper cables, Active Optical Cables

[Contact Us](#)



6COM 25G Transceivers and Cables FAQs

"Explore the 6COM 25G Transceivers and Cables FAQs, covering SFP28 modules, DACs, AOCs, network compatibility, technical features, and the benefits of 25G

[Contact Us](#)

Cisco SFP-25G-LR-S Compatible SFP28 Module,

CISCO COMPATIBLE TRANSCEIVER: Equivalent to the Cisco® SFP-25G-LR-S SMF module; Programmed and tested to ensure seamless integration with Cisco

[Contact Us](#)



Fiber ONT , Nokia

Every broadband optical network terminal you need GPON, XGS-PON or 25G PON, residential or business, with or without voice support (POTS). No matter the

[Contact Us](#)



Demystifying SFP28: The Essential Guide to 25G

SFP28 is a 25G transceiver module for fast, efficient data transfer in modern networks, offering high speed, compatibility, and energy savings.

[Contact Us](#)



Cisco 25G Transceivers and Cables Enable 25 Gigabit

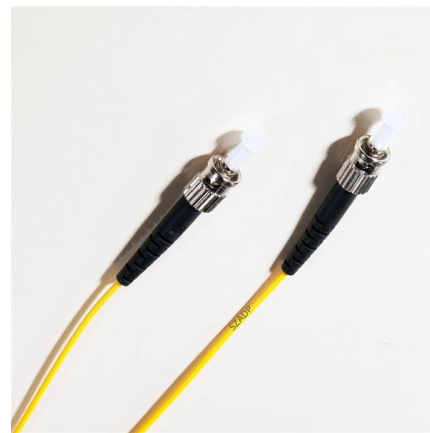
SFP-25G-AOC-xM Active Optical Cables (AOC) 25G AOC's provides a cost effect solution for those same data center applications that require longer

[Contact Us](#)

A Comprehensive Guide to the 25GBASE-SR Optical

The 25GBASE-SR optical module is designed to provide a balance between performance, cost, and power efficiency. Below are some of its key

[Contact Us](#)



Features

Benefits

Applications

Conclusion

FAQs

References

Disclaimer

Copyright

Privacy Policy

Terms of Service

Legal Notice

Contact Us

Feedback

Support

Partners

News

Events

Press

Media

Jobs

Investors

Partners

News

Events

Press

Media

Jobs

Investors

Partners

News

Events

Press

Media

Jobs

Investors

Partners

News

Events

Press

Media

Jobs

Investors

Partners

News

Events

Press

Media

Jobs

Investors

Partners

News

Events

Press

Media

Jobs

Investors

Partners

News

Events

Press

Media

Jobs

Investors

Partners

News

Events

Press

Media

Jobs

Investors

Partners

News

Events

Press

Media

Jobs

Investors

Partners

News

Events

Press

Media

Jobs

Investors

Partners

News

Events

Press

Media

Jobs

Investors

Partners

News

Events

Press

Media

Jobs

Investors

Partners

News

Events

Press

Media

Jobs

Investors

Partners

News

Events

Press

Media

Jobs

Investors

Partners

News

Events

Press

Media

Jobs

Investors

Partners

News

Events

Press

Media

Jobs

Investors

Partners

News

Events

Press

Media

Jobs

Investors

Partners

News

Events

Press

Media

Jobs

Investors

Partners

News

Events

Press

Media

Jobs

Investors

Partners

News

Events

Press

Media

Jobs

Investors

Partners

News

Events

Press

Media

Jobs

Investors

Partners

News

Events

Press

Media

Jobs

Investors

Partners

News

Events

Press

Media

Jobs

Investors

Partners

News

Events

Press

Media

Jobs

Investors

Partners

News

Events

Press

Media

Jobs

Investors

Partners

News

Events

Press

Media

Jobs

Investors

Partners

News

Events

Press

Media

Jobs

Investors

Partners

News

Events

Press

Media

Jobs

Investors

Partners

News

Events

Press

Media

Jobs

Investors

Partners

News

Events

Press

Media

Jobs

Investors

Partners

News

Events

Press

Media

Jobs

Investors

Partners

News

Events

Press

Media

Jobs

Investors

Partners

News

Events

Press

Media

Jobs

Investors

Partners

News

Events

Press

Media

Jobs

Investors

Partners

News

Events

Press

Media

Jobs

Investors

Partners

News

Events

Press

Media

Jobs

Investors

Partners

News

Events

Press

Media

Jobs

Investors

Partners

News

Events

Press

Media

Jobs

Investors

Partners

News

Events

Press

Media

Jobs

Investors

Partners

News

Events

Press

Media

Jobs

Investors

Partners

News

Events

Press

Media

Jobs

Investors

Partners

News

Events

Press

Media

Jobs

Investors

Partners

News

Events

Press

Media

Jobs

Investors

Partners

News

Events

Press

Media

Jobs

Investors

Partners

News

Events

Press

Media

Jobs

Investors

Partners

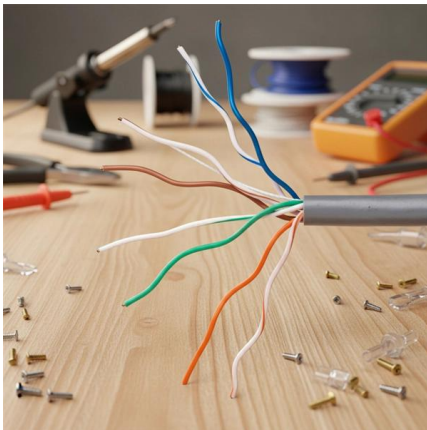
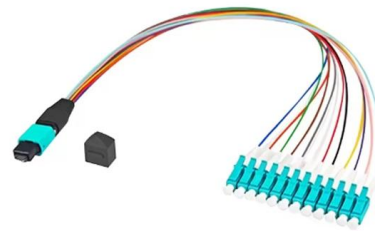
News



25GE SFP28 Optical Modules

Support Documentation Switches Campus Switch
S3700& S5700& S6700 Learn About Products
Hardware Description

[Contact Us](#)



Nokia Customer Support Portal

Support Portal provides access to various services for Nokia Customers and Partners, such as Product Documentation, SW Downloads, Ticket Creation and Case Handling.

[Contact Us](#)

Cisco SFP-10/25G-LR-S Compatible 25GBase-LR Dual

Guaranteed Compatible: In System tested in over 90 OEM switches, routers and servers. 99.98% Reliability Rate: Functionally, optically and environmentally



[Contact Us](#)



25G optical modules for your network

A practical guide to selecting and implementing 25G optical modules based on network needs and equipment compatibility.

[Contact Us](#)



Cisco Compatible 25GBase SFP28 Modules

Note: The Transition Networks TN-SFP-xx25G-xR-S Series 25G SFP28 transceiver modules are designed to install in any SFP28 port allowing for 25G/10GBase-X interfaces to the network through

[Contact Us](#)



25GE and 100GE - Enabling Higher Speeds in

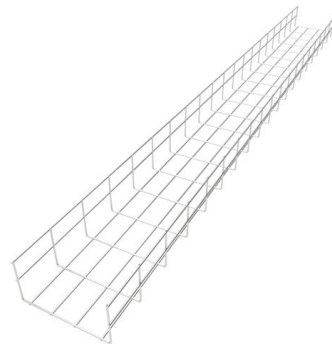
This 25GE and 100GE - Enabling Higher Speeds in Enterprise with Investment Protection White Paper white paper investigates the business and

[Contact Us](#)

Cisco SFP-25G-LR-S Compatible SFP28 Module,

Enhance the networking infrastructure with this Cisco®-compatible 25GBASE-LR optical transceiver, ensuring reliable performance and seamless connectivity at

[Contact Us](#)



Nokia launches new 25G PON fiber modem to

Press release Nokia launches new 25G PON fiber modem to accelerate multi-gigabit broadband deployments New 25G PON fiber modem from Nokia helps operators

[Contact Us](#)



Everything You Need to Know about 25G Optics

The 25G SFP28 optical module is an optical module with a transmission rate of 25Gbps. It is a new Ethernet standard with many

[Contact Us](#)



A Comprehensive Guide to the 25GBASE-SR Optical

Compared to other 25G modules, such as 25GBASE-LR, which operates over longer distances, the 25GBASE-SR module is optimized for high

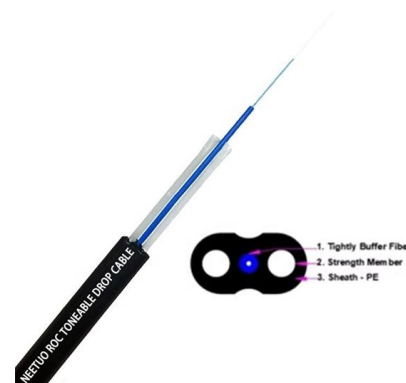
[Contact Us](#)



You Should Know About 25G Transceivers and Cables

You Should Know About 25G Transceivers and Cables FAQs Q1: What is SFP28? A: SFP28 is the standard form factor of 25G optical modules. Its

[Contact Us](#)



SFP Data Rate Explained: 1G vs. 10G vs. 25G Selection Guide

Data rate (1G / 10G / 25G): Refers to the actual transmission speed supported by the optical or electrical signaling inside the module. This distinction is critical because many switches use

[Contact Us](#)





SFP vs. QSFP: Differences, Use Cases, and How to Choose

Compare SFP vs. QSFP transceivers: key differences, speeds, distances, costs, and expert guidance to choose the right module for your network architecture.

[Contact Us](#)



Contact Us

For datasheets, pricing, or custom fiber access solutions, please visit:
<https://frindel.es>