

# **Technical Requirements for Mesh Cable Trays**





## Overview

---

NEMA BI 50051 standard for Cat Van Loi wire mesh cable tray is the standard for Metal Cable Tray Systems. The latest edition (2024) defines strict requirements for: Construction, materials, and load capacity. Depending on the type and version of mesh cable tray, as well as the corrosion protection used, the mesh cable tray systems can be ambient temperatures of - 20 °C to + 120 °C. The Cable Tray ng standards, performance standards, test standards and application in this document have been tested extensively by competent professional engineers completely installed, without damage either to conductors or. Our wire mesh cable trays undergo strict quality control and testing to ensure their reliability under various environmental conditions.



## Technical Requirements for Mesh Cable Trays

---

### Wire Mesh Cable Trays Technical Information Detailed,



Trays shall be supported at a maximum span of 2.5m by trapeze, wall, floor or channel mounting methods and will not exceed maximum loads as specified by

[Contact Us](#)

### Microsoft Word

Continuous, rigid, welded steel or stainless steel wire mesh cable management system. Cable tray systems are defined to include, but are not limited to, straight sections, supports and accessories.

[Contact Us](#)



### Cablofil CP300GC Hot Dip Galvanised Steel Wire Cable Tray Cover

It is compatible with Cablofil wire mesh trays and installed using cover clamps to support straightforward assembly. Manufactured from hot dip galvanised steel, it offers corrosion resistance and mechanical

[Contact Us](#)

### WIRE MESH TRAY TECHNICAL GUIDE

The NEMA VE standard for cable trays is the "product" standard which defines the requirements and tests for cable tray and cable ladder systems. As IEC 61 537 is the only harmonized standard at a



### **Perfect Wire Mesh Cable Tray Systems Design for Your**

Unlock the secrets to flawless wire mesh cable tray systems designs, cable tray sizing and routing, electrical, installation guidelines for seamless

[Contact Us](#)



### **Cable Tray Technical Guide A practical guide to product selection and**

This guide for engineers and installers has been developed by ABB as a practical reference regarding cable tray characteristics, installation, and requirements.

[Contact Us](#)



### **Mesh cable tray systems**

be worn during all mechanical mounting work. The mesh cable tray systems must be included in the protecti. meas-ures and/or the equipotential bonding. The inclusion in the equipotential bonding of

[Contact Us](#)

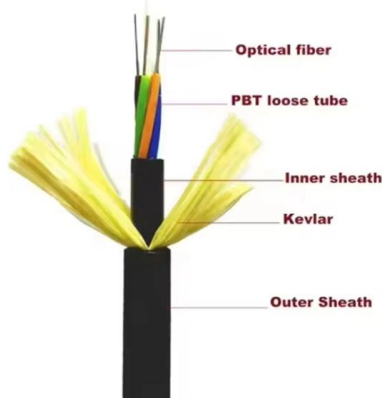




## WireMesh Cable Tray Technical Data Sheet

Designed for the installation of cable routes of high-current light and motor distributions, low-current distributions, measurement, regulation and distribution of other media. All Rights Reserved.

[Contact Us](#)



## Codes and Standards , Cable Tray Institute

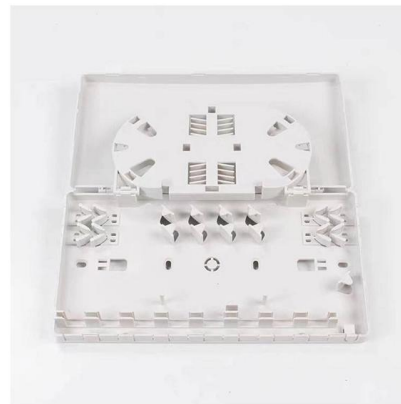
Provides technical requirements concerning the construction, testing, and performance of metal cable tray systems. It is the first joint effort of NEMA and CSA International to put in one place standards

[Contact Us](#)

## IEC Standard for Cable Tray: Complete Technical Guide

One of the most recognized frameworks globally is the IEC standard for cable tray systems. This standard ensures safety, durability, and performance

[Contact Us](#)



## NEMA BI 50015: Cable Tray Standards & UL Classified

NEMA BI 50051 standard for Cat Van Loi wire mesh cable tray is the standard for Metal Cable Tray Systems. The latest edition (2024) defines strict requirements

[Contact Us](#)



## Wire Mesh Cable Trays Technical Information Detailed,

Wire Mesh Cable Tray Installation Notice: Bends, Risers, T Junctions, Crosses and Reducers can be made from wire mesh cable tray straight sections flexibly in

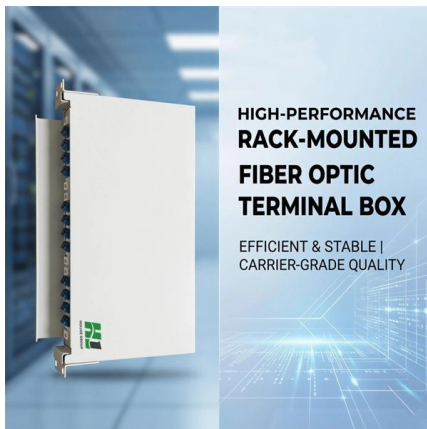
[Contact Us](#)



### Cablofil CP500GC Hot Dip Galvanised Steel Wire Cable Tray Cover

It is compatible with Cablofil wire mesh trays and installed using cover clamps to support straightforward assembly. Manufactured from hot dip galvanised steel, it offers corrosion resistance and mechanical

[Contact Us](#)



## GUIDE CABLE TRAYS TECHNICAL

Specifies requirements for metal cable trays and associated fittings designed for use in accordance with the rules of Canadian Electrical Code, Part I and the National Electrical Code®

[Contact Us](#)



### Selecting Cable Trays: A Complete Guide for Cable

Accessibility: The wire mesh design allows for easy "drop-in" cable installation and offers 360-degree access for visual identification, troubleshooting,

[Contact Us](#)





### **Cablofil CP150GC Hot Dip Galvanised Steel Wire Cable Tray Cover**

It is compatible with Cablofil wire mesh trays and installed using cover clamps to support straightforward assembly. Manufactured from hot dip galvanised steel, it offers corrosion resistance and mechanical

[Contact Us](#)



### **Wire Mesh Cable Tray**

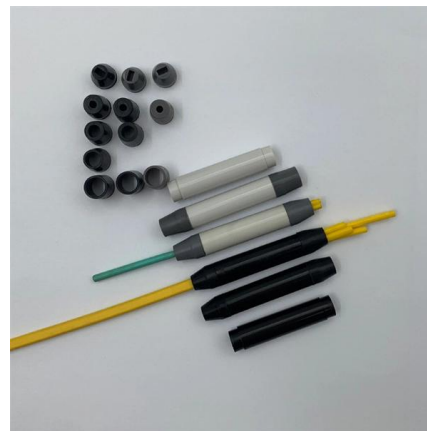
Wire mesh cable trays are available in standardized and customizable dimensions to meet diverse project requirements: Widths: Commonly range from 100 mm to 600 mm, with wider options available

[Contact Us](#)

### **Technical Requirements for Wire Mesh Cable Trays**

Technical Specifications for Wire Mesh Cable Trays Wire mesh cable tray technical requirements are crucial for the success of cable management and wiring systems. Our wire mesh cable trays undergo

[Contact Us](#)



### **How to Get Quick and Accurate Cable Tray Pricing**

Learn how to get quick and accurate cable tray pricing for your projects. This guide covers new builds, renovations, and custom systems.

[Contact Us](#)



## Firestopping Requirements for Cable Trays and

Technical guide to firestopping cable tray and slab penetrations in electrical shafts; specifies materials, packing limits, waterstop heights and

[Contact Us](#)



### Cablofil CP500S6 316L Stainless Steel Wire Cable Tray Cover

Cablofil CP500S6 is a protective cover for wire mesh cable tray systems, used to retain and protect cables in harsh environments. It is compatible with wire mesh trays and secured using cover clamps.

[Contact Us](#)



## LEGRAND CABLE TRAYS TECHNICAL GUIDE

Not all cable trays are equivalent. The mechanical and electrical characteristics, tests, certifications, overall quality management, recommendations mentioned in this technical guide only apply to our

[Contact Us](#)



### Cable Tray Technical Guide A practical guide to product selection and

Cable Tray Technical Guide A practical guide to product selection and installation This guide for engineers and installers has been developed by ABB as a practical reference regarding cable tray

[Contact Us](#)

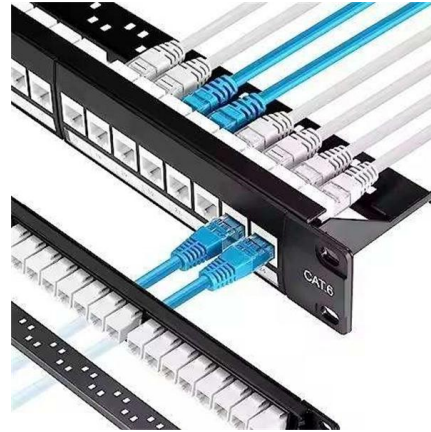




## Cable Tray Systems: Requirements and Best Practices

Comprehensive guide to cable tray systems requirements: tray types, materials, loading, supports, bonding, routing, and best practices for safe electrical cable management.

[Contact Us](#)



### cable tray technical specifications

Armorduct cable tray systems are usually assembled using M6 roofing bolts particularly for couplers, fishplates and connection to supporting framework. It should be noted that independent testing has

[Contact Us](#)

### Cablofil Electro-Zinc Steel Cable Tray Radius Support 150mm

Electro-zinc steel radius support for wire mesh cable trays, enabling horizontal hinged direction changes. Compatible with 100-600 mm trays with 50 mm side height for controlled cable routing.

[Contact Us](#)



### Technical Requirements for Wire Mesh Cable Trays

GITTE offers a wide range of wire mesh cable trays in compliance with relevant technical requirements. Our products are of excellent quality and reliability.

[Contact Us](#)



## Contact Us

---

For datasheets, pricing, or custom fiber access solutions, please visit:  
<https://frindel.es>