

Tariff Costs of 12-Core High Return Loss Adapters for FTTH





Tariff Costs of 12-Core High Return Loss Adapters for FTTH



Fiber-optic Adapters - inline, bulkhead adapter,

Fiber-optic adapters are used for mating terminated optical fibers - with many versions for inline/bulkhead use, different connector types and environmental

[Contact Us](#)

FTTH Deployment costs: expectations vs reality

Overview A new White Paper by the FTTH Council Market Intelligence Committee finds European FTTH deployment cost estimates are highly accurate. That

[Contact Us](#)



Fiber to the Home Market Size, Share , Industry Report,

With the escalating demand for high-speed and reliable internet services, telecom operators are increasingly focusing on expanding their FTTH networks to cater to

[Contact Us](#)

12-Core SC/APC One-Piece Fiber Optic Adapter

Compact one-piece 12-core SC/APC adapter for high-density ODF

[Contact Us](#)



Optical Return

Learn optical return loss for fiber technicians. Understand causes like dirt, breaks and flaws and master measurement with OTDRs.

[Contact Us](#)



Bundesnetzagentur

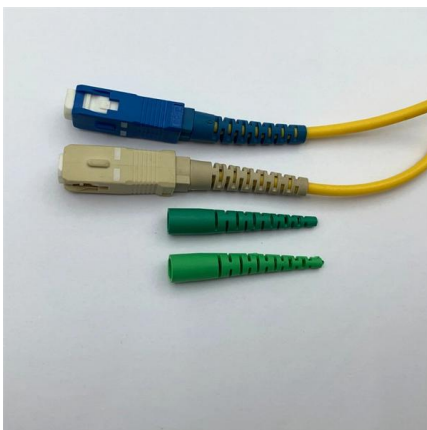
According to section 40, clause 3, number 1 of the German Telecommunications Act, the Regulatory Authority (Bundesnetzagentur, BNetzA) may, besides the cost information submitted to it,

[Contact Us](#)

What Is Return Loss and Why It Matters in FTTH

What Is Return Loss? Why It Matters for FTTH
Signal Stability In FTTH networks, signal problems are not always caused by broken fibers or high

[Contact Us](#)



Tariff Impact on the Broadband Market

Recent shifts in U.S. trade policy, including the implementation and adjustment of tariffs, have introduced uncertainty into global markets.
Temporary

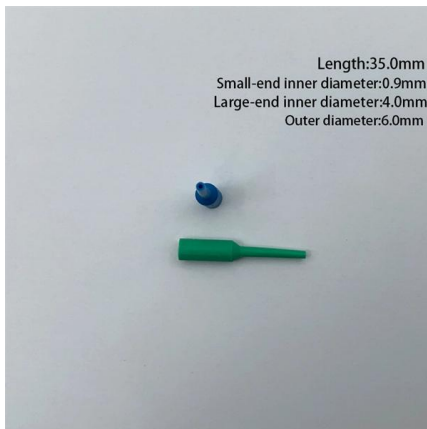
[Contact Us](#)



Getting the signals right: Electricity network tariff methodologies in

8 This is the latest (2025) edition of ACER's report on electricity network tariffs. The report deals with network tariff structures and the allocation of system operators' costs (or revenues) across network

[Contact Us](#)



What Is ORL in Fiber Optics? A Guide to Optical Return Loss

Optical Return Loss (ORL) is a critical factor in fiber optic system performance. It refers to the amount of light reflected back toward the

[Contact Us](#)



FTTH 12-Core ODF FC/Sc/LC/St Adapters Optical

FTTH 12-core ODF FC/SC/LC/ST Adapters Optical Distribution Frame. Optical Distribution Frame is used as a termination point for the feeder cable to connect

[Contact Us](#)



FTTH Drop Cable Procurement & Pricing Guide: Costs,

Explore key factors in FTTH drop cable procurement, including pricing per meter, cable types, standards, and deployment costs to ensure cost-effective, reliable

[Contact Us](#)



Harmonized Tariff Schedule

The Harmonized Tariff Schedule provides detailed tariff rates and statistical categories for merchandise imported into the United States.

[Contact Us](#)



Fiber Optic Connector Types and Their Impact on

Learn how fiber optic connector types like SC, LC, APC, and UPC influence insertion loss and return loss. Optimize your fiber network with the right

[Contact Us](#)



Optical Return Loss Measurement

Executive Summary To ensure the proper performance of an optical transmission system, various parameters--such as attenuation and optical return loss (ORL)--must be within the acceptable

[Contact Us](#)



Article , Tariffs, Transformers and Utilities

Any cost increases to this vital import will impact the manufacture of transformer cores. Not surprisingly, it is unlikely that transformer manufacturers

[Contact Us](#)

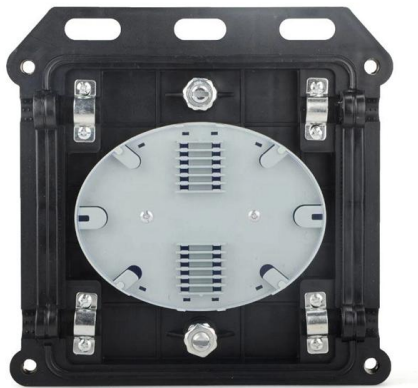




6 To 12 Core Fiber Optic Patch Panel ODF FTTH Fully

With the increasing degree of network integration, there has been an optical-digital hybrid patch panel that integrates ODF, DDF, and power distribution units. It is

[Contact Us](#)



FTTH 12 Core Fiber Optic Distribution Unit Termination Box With SC

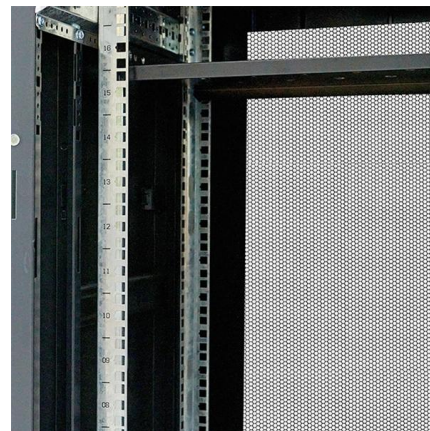
It is used as a termination point for the feeder cable to connect with drop cable in FTTx network system. It integrates fiber splicing, splitting, distribution, storage and cable connection in one solid protection box.

[Contact Us](#)

Calculating the costs associated with FTTH networks

Applying a relevant cost model for grant applications Fiber to the Home (FTTH) technology offers broadband connectivity unrivalled in terms of speed and

[Contact Us](#)



In Stock 12 Core Fiber Patch Panel FTTH/FTTX Telecom Cabinet

Available in various configurations based on connector type and density, 12-core fiber patch panels are designed to meet diverse performance, space, and scalability requirements. Below is a detailed

[Contact Us](#)





Fiber Insertion Loss and Return Loss: A Complete Guide

For fiber jumper suppliers, the insertion loss and return loss of the fiber cables they provide should meet the corresponding standards. The max insertion

[Contact Us](#)



Reference to Insertion Loss and Return Loss for Fiber

As we know, there are a large number of fiber optic cables used between devices in optical communications, and the optical connectors of fiber

[Contact Us](#)

FTTH IP65 12cores with Scupc Adapters ABS Material Junction Box

It is primarily used in FTTH access system terminals. The box is made from high-strength ABS, providing excellent sealing and anti-aging properties, suitable for outdoor wall, pole, or indoor wall mounting.

[Contact Us](#)



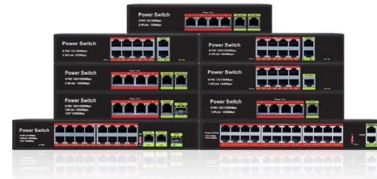
What is Optical Return Loss in Fiber Optic

What It Indicates: High return loss (expressed in dB) means minimal reflections, ensuring efficient signal transmission. Causes of Reflection:

[Contact Us](#)

Various fiber optic components for FTTH solutions you can count on us, good quality and low cost. Focus on reducing your cost and procurements process by offering

[Contact Us](#)



Fiber To The Home Network Design

Fiber broadband design using FTTH Within each of these we will discuss design options that have been proven successful in the real world. We will look at how to

[Contact Us](#)

Tariffs: Estimating the Economic Impact of the 2025

Empirical research has found that the pass-through rate is generally high (often near 100 percent), meaning that the burden of tariffs typically falls on

[Contact Us](#)



Contact Us

For datasheets, pricing, or custom fiber access solutions, please visit:
<https://frindel.es>