



**FRINDEL OPTICS**

# **TP-Link optical module parameters**





## Overview

---

Compatible with TP-Link GPON OLT, such as DS-P7001-16, DS-P7001-08, and DS-P7001-04 Tx: 2488. 16Mbps, Tx: 1490nm, Rx: 1310nm, 20 km Max, GPON SFP TP-Link SFP GPON Class C+ Module. The GPON ONU Stick transceiver module is designed with a simpler and more cost-optimised architecture that ultimately reduces the number of devices deployed and managed in a network. It integrates bidirectional data transmission over one single-mode optical fibre. TP-LINK's TL-SM321B-2 and TL-SM321A-2 is designed to work in a pair to create an on-site gigabit fiber communication up to 2km (2,000 meters). When the connection does not work as expected after we set it up according to the Installation Guide, we need to do some troubleshooting. Please contact the Fiber ISP for compatible models! \*\*\*It is strongly advised to consult with the Fiber ISP first whether it is possible to use a PON SFP ONU Stick to bypass the provided Fiber Gateway.



## TP-Link optical module parameters

---



### TP-Link SFP GPON Class C+ Module

Compatible with TP-Link GPON OLT, such as DS-P7001-16, DS-P7001-08, and DS-P7001-04 Tx: 2488.32Mbps, Rx: 1244.16Mbps, Tx: 1490nm, Rx: 1310nm, 20 km Max, GPON SFP TP-Link SFP

[Contact Us](#)

### Deco SFP+ Ports User Reference Guide

With the release of the WiFi 7 Deco series, SFP+ interfaces have been integrated into the Deco families. This enhanced interface offers faster and

[Contact Us](#)



### TP-LINK Compatible GPON ONU Stick with MAC and

It integrates bidirectional data transmission over one single-mode optical fibre. The GPON ONU Stick module provides an asymmetric 1.244 Gbps upstream and

### Optical data link evaluation criteria and test procedures

The se op tical links need to be radiation tolerant to the requirement of the detectors' operational lifetime in the SLHC. The goal of this document is to develop standardized test

[Contact Us](#)

### Wall Mount Cabinet Server Racks



### TP-Link Aginet GPON OLT SFP Optical Module

The TP-Link Aginet PLT12-C+ is a high performance GPON OLT SFP transceiver module, which is designed for PON (Passive Optical Network) application. TP

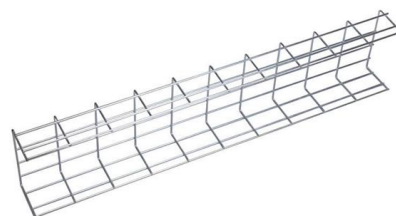
[Contact Us](#)



### TP-Link TL-SM321A-2 Datasheet

TL-SM321A-2 TP-LINK s TL-SM321A-2 and TL-SM321B-2 is designed to work in a pair to create an on-site gigabit fiber communication up to 2km (2,000 meters). With one single-mode fiber, the pair of

[Contact Us](#)



### 1000Base-BX WDM Bi-Directional SFP Module Datasheet

TP-Link's TL-SM321A-2 and TL-SM321B-2 are developed in accordance with the Small Form Pluggable Multi-Source Agreement (SFP-MSA). As a WDM Bi-Directional optical transceiver,

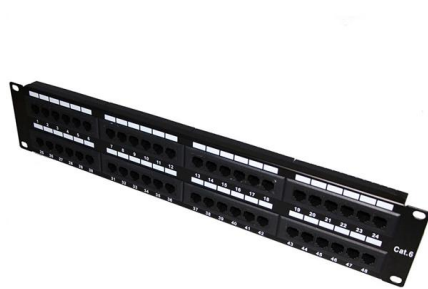
[Contact Us](#)



## How to View Optical Module Parameters

Using a Command If an optical module is installed in a running router, you can run the display transceiver command to view parameters of the optical module, including the center wavelength,

[Contact Us](#)



## TP-LINK Compatible GPON ONU Stick with MAC and

TP-LINK Compatible GPON ONU Stick with MAC and Web Interface SFP SFP 1310nm-TX/1490nm-RX 1.244G-TX/2.488G-RX Class B+ 20km DOM Simplex

[Contact Us](#)

## Omada Access Point User Guide

2025 TP-Link 1910013169 REV5.2.0 Note: Features available in the AP may vary by model and software version. All images, steps, and descriptions in this guide are only examples and may not reflect your

[Contact Us](#)



## SFP Module TP-LINK TL-SM311LS (1000Base-SX, SMF 10km, 2xLC)

Distinguishing features: · duplex transmission with the use of two single-mode fibers, · transmission range up to 10 km, · LC optical connectors.

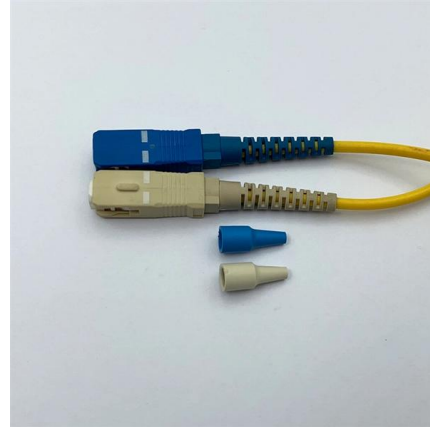
[Contact Us](#)



## 1000Base-BX WDM Bi-Directional SFP Module

DDM supports real-time monitoring of the transceiver, and shows parameters including the transceiver current which transmits/receives optical power and

[Contact Us](#)



## Standard Troubleshooting for SFP modules and Media

For an SFP module, such as TL-SM321A/B, that supports WDM (Wavelength Division Multiplex), they must work together. The TL-MC220L

[Contact Us](#)

## Media Converters & SFP Module Flyer\_Online Version

TP-Link Fast Ethernet Media Converters are designed to address the needs of flexible long-range surveillance deployment with optical fibers. It provides an economical path towards

[Contact Us](#)



## The Most Comprehensive Guide Of Optical Modules

Explore the ultimate guide to optical modules. Learn types, functions, performance metrics & how to choose the right module for your fiber network.

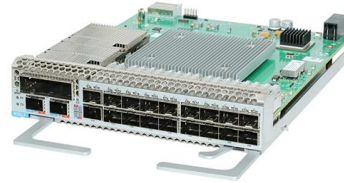
[Contact Us](#)



## **XM60A , GPON ONU SFP Module**

XM60A is a GPON ONU SFP Module designed with the G.984 Standard and the Small Form Pluggable Multi-Source Agreement, enabling 1.244Gbps upstream & 2.488Gbps downstream broadband

[Contact Us](#)



## **How to View Optical Module Parameters**

Using a Command If an optical module is installed in a running router, you can run the display transceiver command to view parameters of the optical module, including the center

[Contact Us](#)



## **show fiber-ports optical-transceiver, detailed , TP-Link TL-SL3428**

TL-SG3109/TL-SL3428/TL-SL3452 Gigabit Managed Switch Family CLI Reference Guide show fiber-ports optical-transceiver The show fiber-ports optical-transceiver Privileged EXEC command displays

[Contact Us](#)



## **Optical-Module Parameter Inquiry and Alarm Configuration**

The parameters of optical module include the light transmission power, the light reception power, the temperature, the power-supply voltage and the bias current.

[Contact Us](#)



## FS Community

Hier sollte eine Beschreibung angezeigt werden, diese Seite lässt dies jedoch nicht zu.

[Contact Us](#)



### 1000Base-BX WDM Bi-Directional SFP Module

The TP-LINK's TL-SM321B-2 is developed in accordance with the Small Form Pluggable Multi-Source Agreement (SFP-MSA). As a WDM Bi-Directional optical

[Contact Us](#)



### DS-PMA-C+ , SFP GPON Class C+ Module , TP-Link

Single-fiber SFP GPON Class C+ Module Hot-Pluggable with maximum flexibility Supports Digital Diagnostic Monitoring (DDM) Compatible with TP-Link GPON OLT, such as DS-P7001-16, DS-P7001

[Contact Us](#)



### How to configure the internet access service on GPON

Note: This Article Applies to TP-Link GPON OLT P1201 Ver.1; All the service is based on the Data Plan, so before we start the configuration, we need

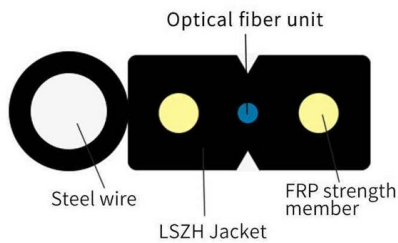
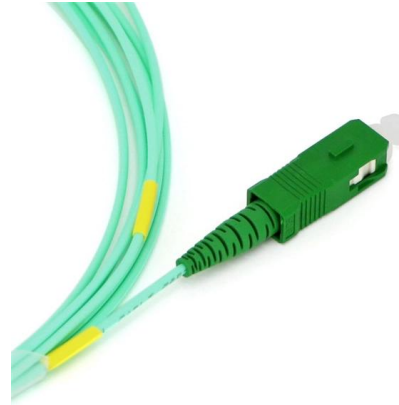
[Contact Us](#)



### **SFP Module TP-LINK TL-SM311LS (1000Base-SX, SMF 10km, 2xLC)**

This optical module is compliant with SFP (Small Form-factor Pluggable / Mini GBIC) standard. It is an optional piece of equipment for TP-LINK managed/web smart switches, for

[Contact Us](#)



### **Double Fiber 550 m SFP Optical Transceiver: TP-LINK**

TP-LINK TL-SM311LM is SFP Double Fiber Transceiver supporting 1.063-1.25Gbps data rate in 550 m distance over Multi-Mode Fiber (MMF).

[Contact Us](#)

## **Contact Us**

---

For datasheets, pricing, or custom fiber access solutions, please visit:  
<https://frindel.es>